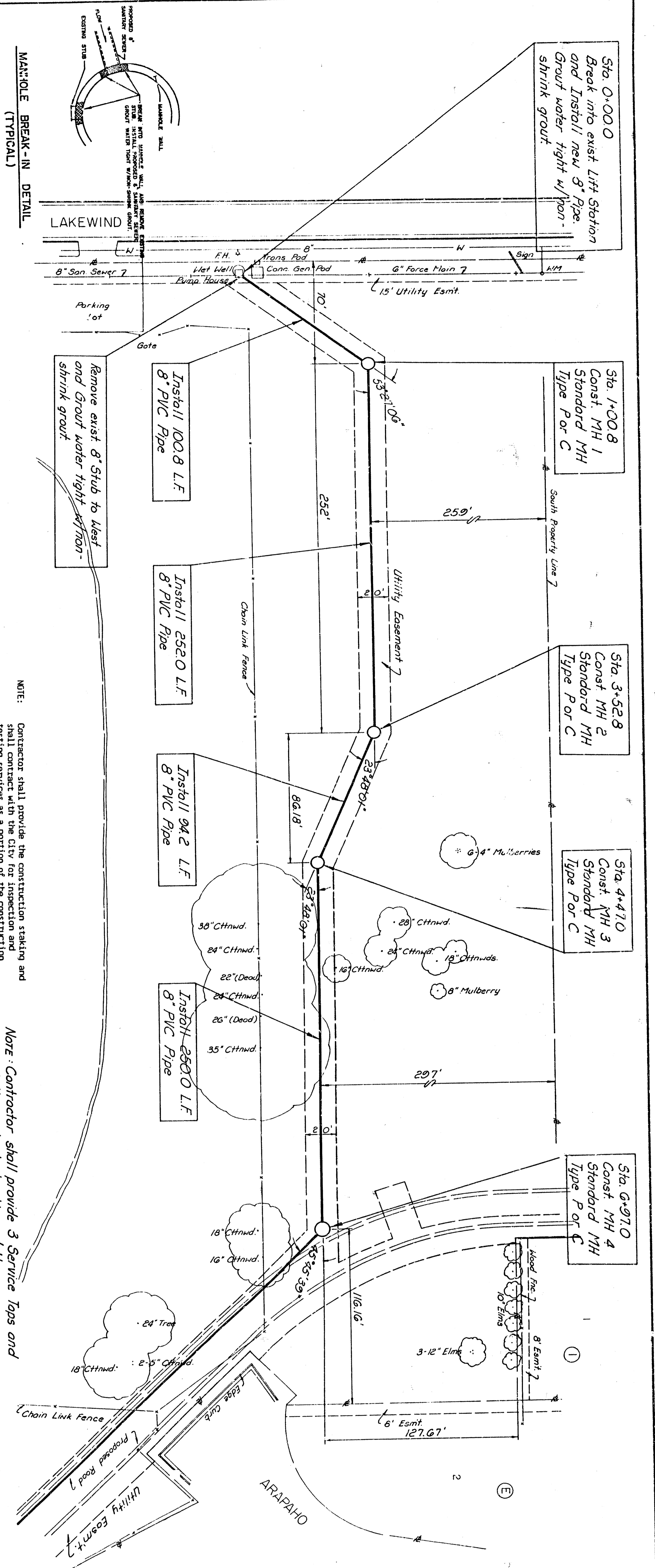
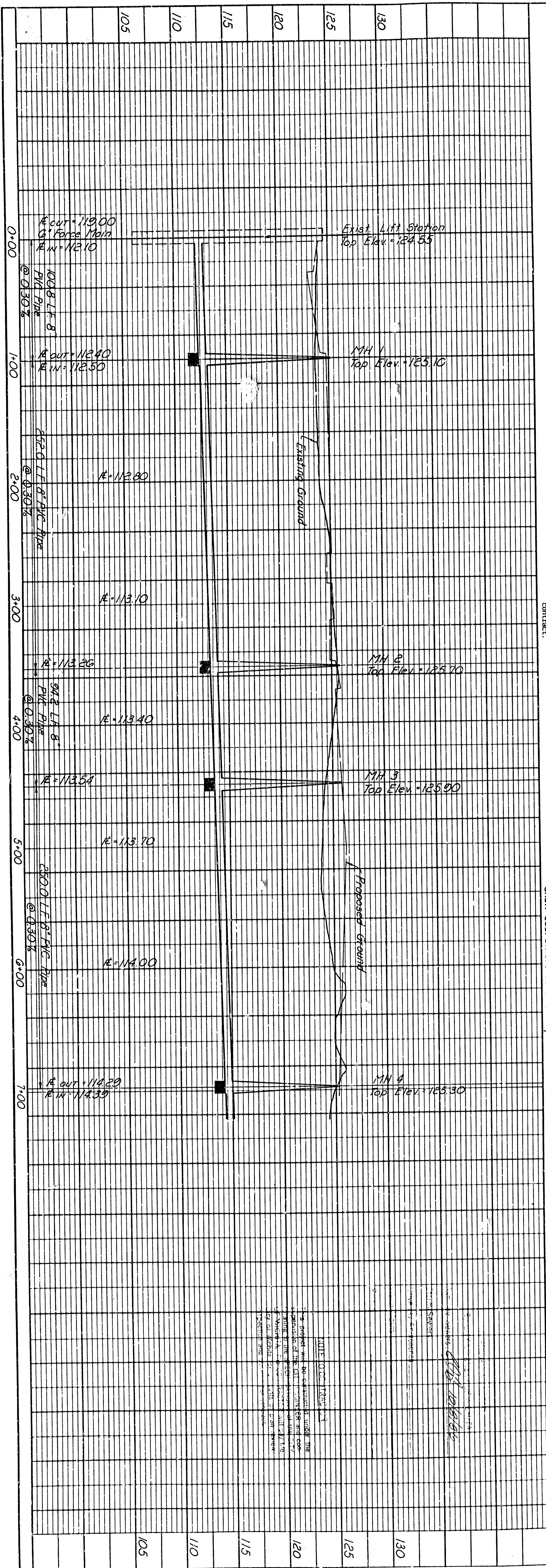


PROFILE	SURVEYED	BY	DATE
NOTE BOOK	PLOTTED		
	GRADES CHECKED		
	B. M. NOTED		
	STRUCTURE NOTATIONS CH'KD		

PLAN	SURVEYED	BY	DATE
NOTE BOOK	PLOTTED		
	ALIGNMENT CHECKED		
	RT. OF WAY CHECKED		



MANHOLE BREAK-IN DETAIL (TYPICAL)

NOTE: Contractor shall provide the construction staking and shall contract with the City for inspection and testing services as a portion of the construction contract.

Note: Contractor shall provide 3 Service Taps and shall coordinate location w/ the owner.

SCALE

PLAN: Lot & Long. 0 40 80

PROFILE: Horiz. same as above

Vertical 5 10

PROFESSIONAL ENGINEERING CONSULTANTS, P.A.

ENGINEERS WICHITA, KANSAS

CITY OF WICHITA, KANSAS  
MICHAEL E. LINDEBAK P.E., CITY ENGINEER  
SANITARY SEWER IMPROVEMENTS

LINE NO. 1

MILES LAKEWOOD LIVING NURSING CENTER  
C.O.W. No. 468-76-245-80001-000-000-079

Designed by: KLR, GM  
Drawn by: GM

Job No. 34-86459-1  
Date: Sept. 1986

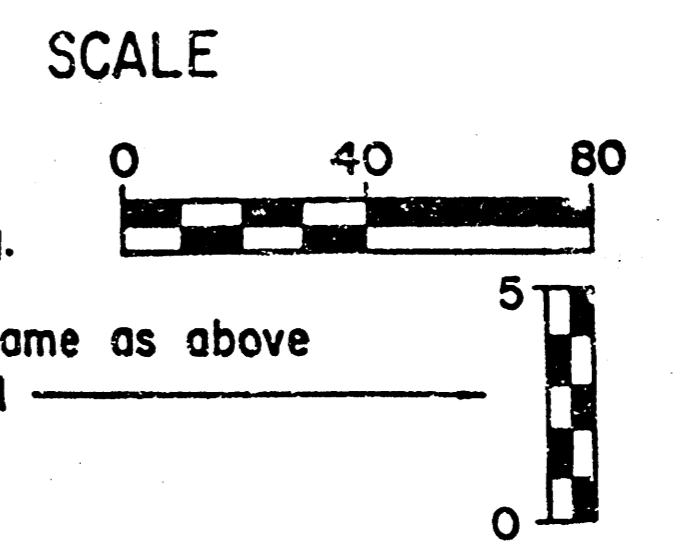
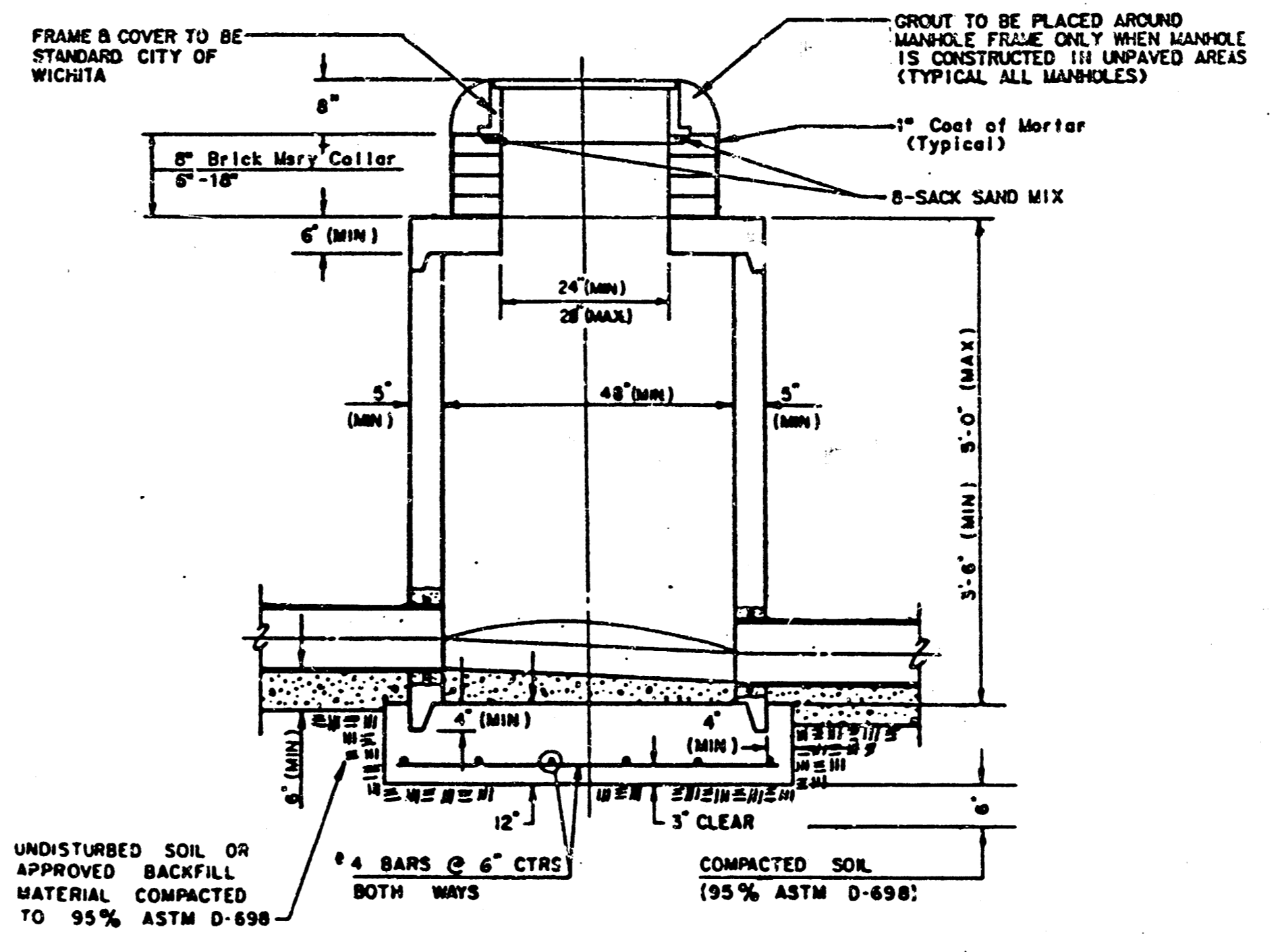
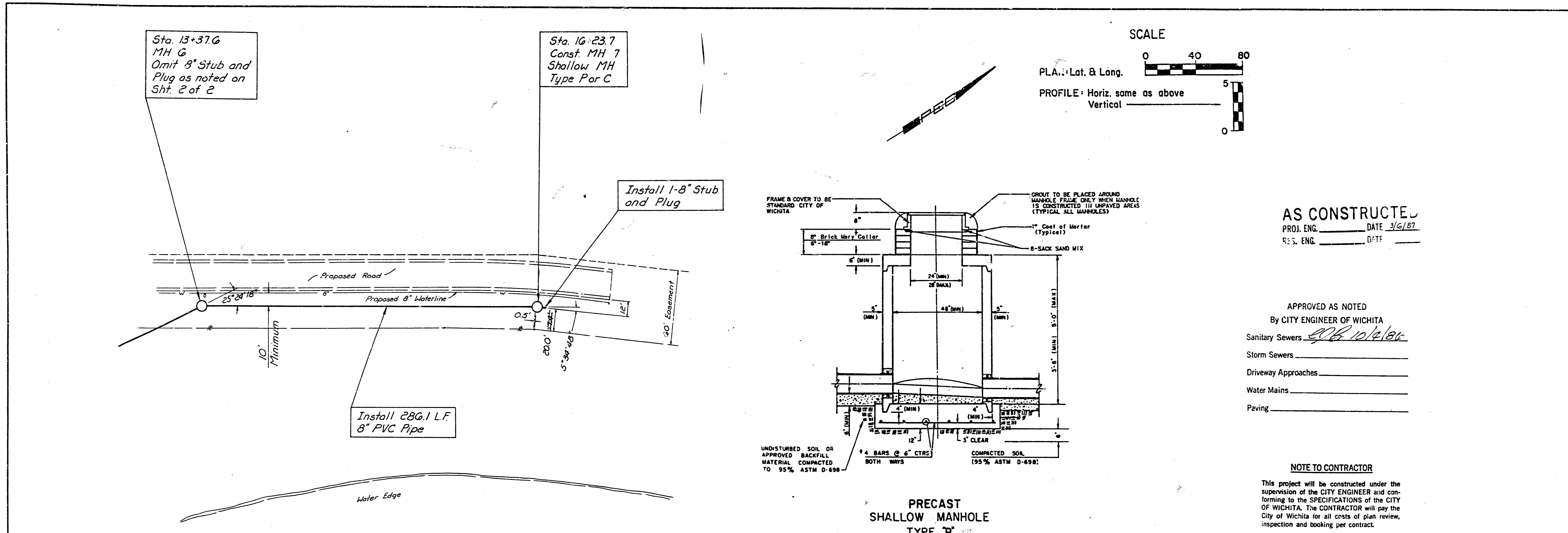
10104  
PROFESSIONAL ENGINEER  
KANSAS

FILMED FROM THE BEST AVAILABLE COPY.....



DATE	
BY	
CHECKED	
NO. OF MAN CHECKED	
NOTE BOOK	
NO.	

DATE	
BY	
CHECKED	
NO. OF MAN CHECKED	
NOTE BOOK	
NO.	

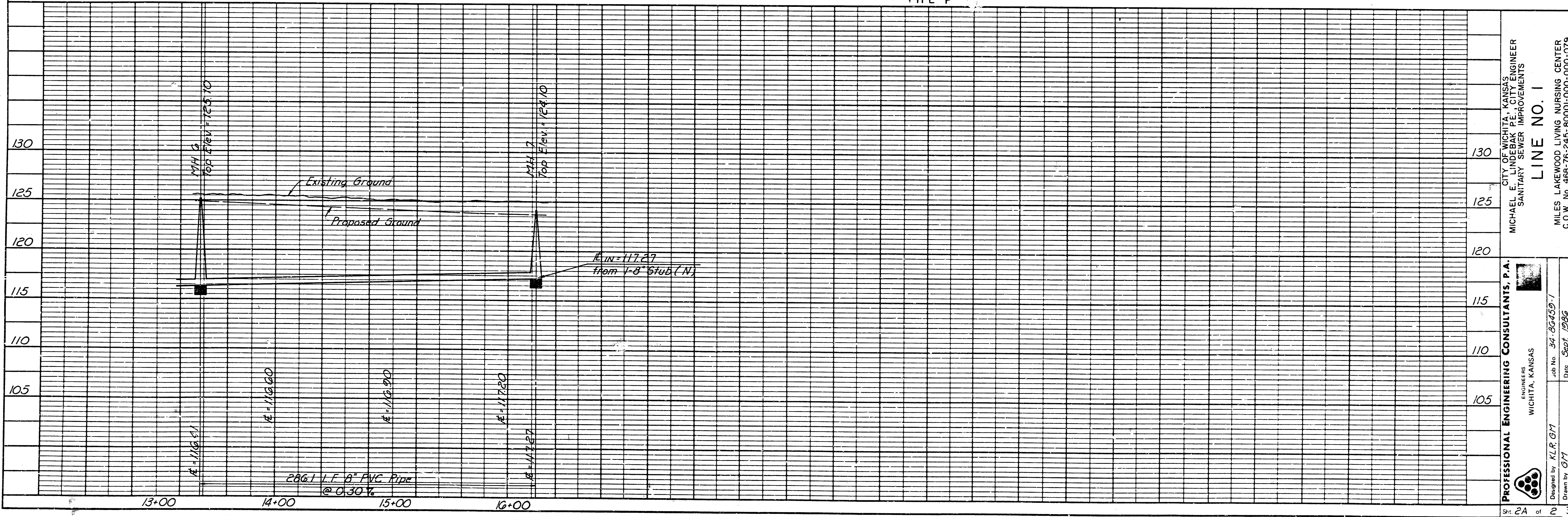


**AS CONSTRUCTED**  
 PROJ. ENG. \_\_\_\_\_ DATE 3/6/87  
 RES. ENG. \_\_\_\_\_ D:TF

APPROVED AS NOTED  
 By CITY ENGINEER OF WICHITA  
 Sanitary Sewers 4/6/10/2/86  
 Storm Sewers \_\_\_\_\_  
 Driveway Approaches \_\_\_\_\_  
 Water Mains \_\_\_\_\_  
 Paving \_\_\_\_\_

**NOTE TO CONTRACTOR**  
 This project will be constructed under the supervision of the CITY ENGINEER and conforming to the SPECIFICATIONS of the CITY OF WICHITA. The CONTRACTOR will pay the City of Wichita for all costs of plan review, inspection and booking per contract.

**PRECAST SHALLOW MANHOLE TYPE "P"**



**LINE NO. 1**  
 MICHAEL E. JENSEN, ENGINEER  
 SANITARY SEWER IMPROVEMENTS  
 PROFESSIONAL ENGINEERING CONSULTANTS, P.A.  
 WICHITA, KANSAS  
 Job No. 34-86450-1  
 Date 5/27/86  
 Designed by K.L.R./G.T.  
 Drawn by G.T.  
 CITY OF WICHITA, KANSAS  
 MILES LAKEWOOD LIVING NURSING CENTER  
 C.O.W. No. 468-76-245-80001-000-079

**FILMED FROM THE BEST AVAILABLE COPY.....**