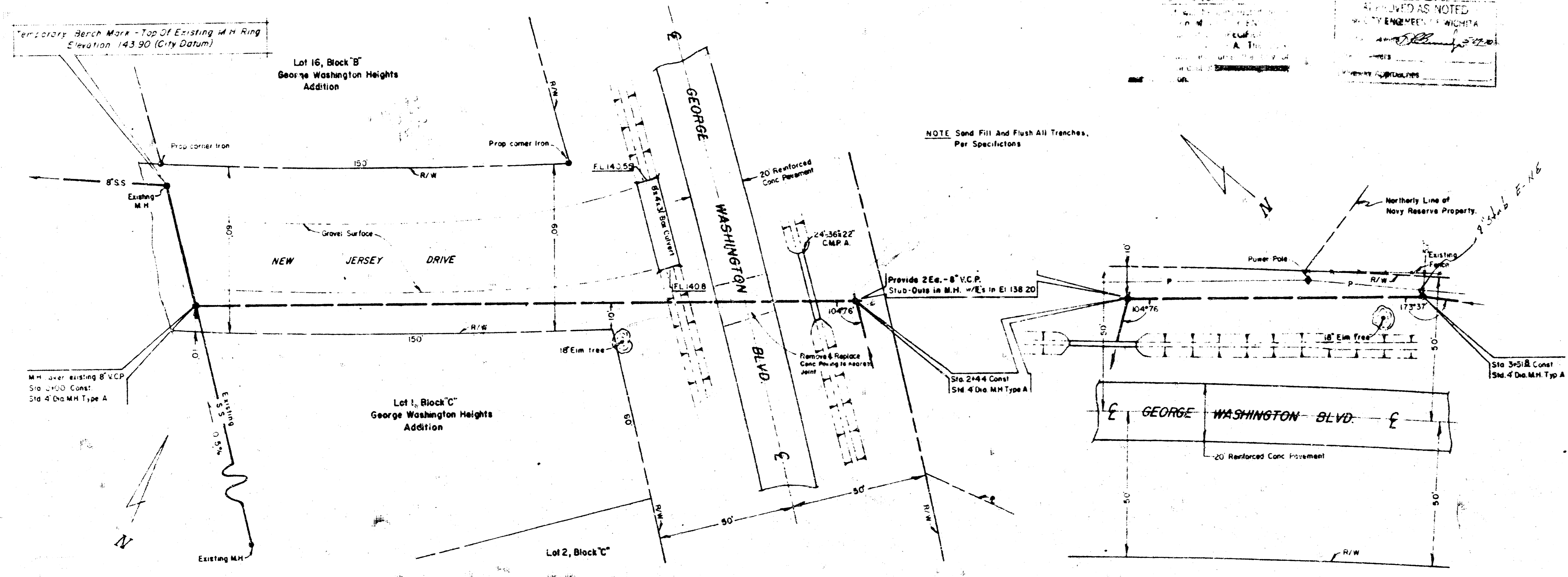


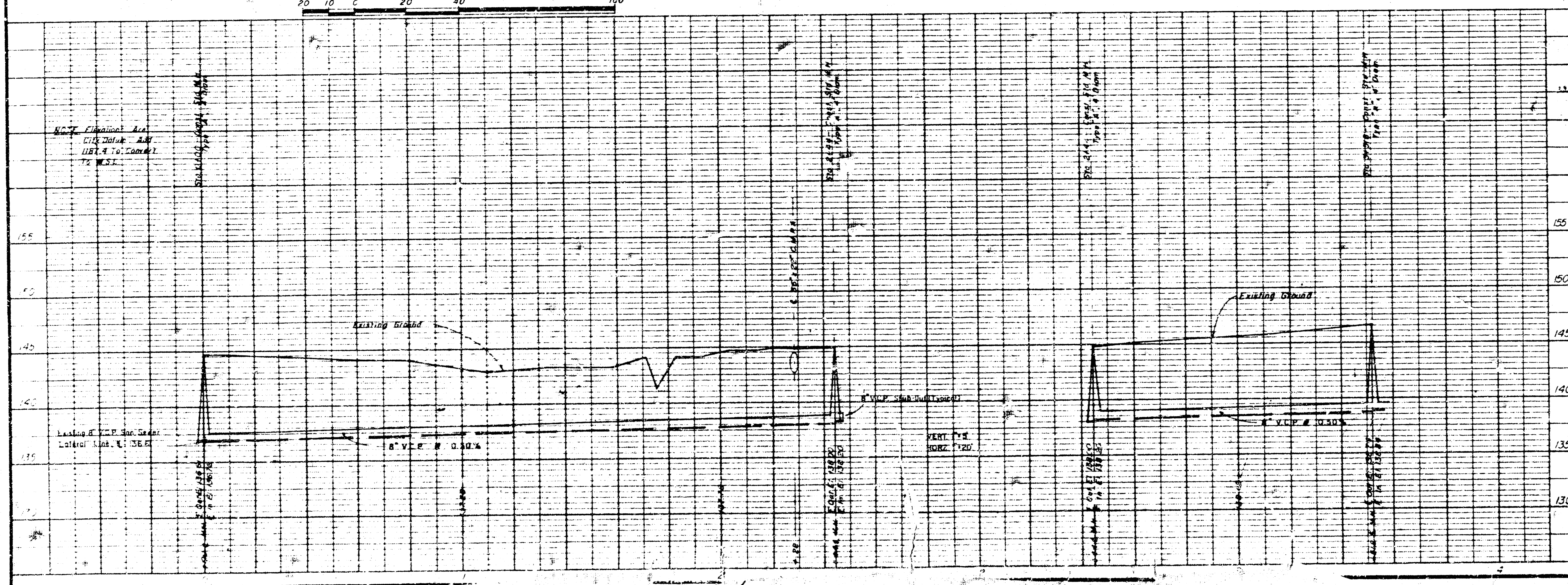
DATE	DESCRIPTION

*Redy cut
156.50*



APPROVED AS NOTED
WICHITA ENGINEERS & ARCHITECTS
A. THOMPSON
1501 S. W. 10th St.
WICHITA, KANSAS 67202

*156.55
3m "D" cut in Headwall
entirely emb'd of R.C.C.*



SCHAEFER SCHIRMER & ELLIN AIA 200 S. MULLEN WICHITA, KANSAS 67202 PHONE: 941-1111 FAX: 941-1112	DEPARTMENT OF THE NAVY MIDWEST DIVISION NAVAL RESERVE TRAINING CENTER
	WICHITA NAVAL RESERVE TRAINING CENTER
DATE: 11/15/00 DRAWN BY: J. J. BROWN CHECKED BY: J. J. BROWN APPROVED BY: J. J. BROWN	DATE: 11/15/00 DRAWN BY: J. J. BROWN CHECKED BY: J. J. BROWN APPROVED BY: J. J. BROWN
PROJECT NO.: F 80091	SHEET NO.: 1 OF 1

