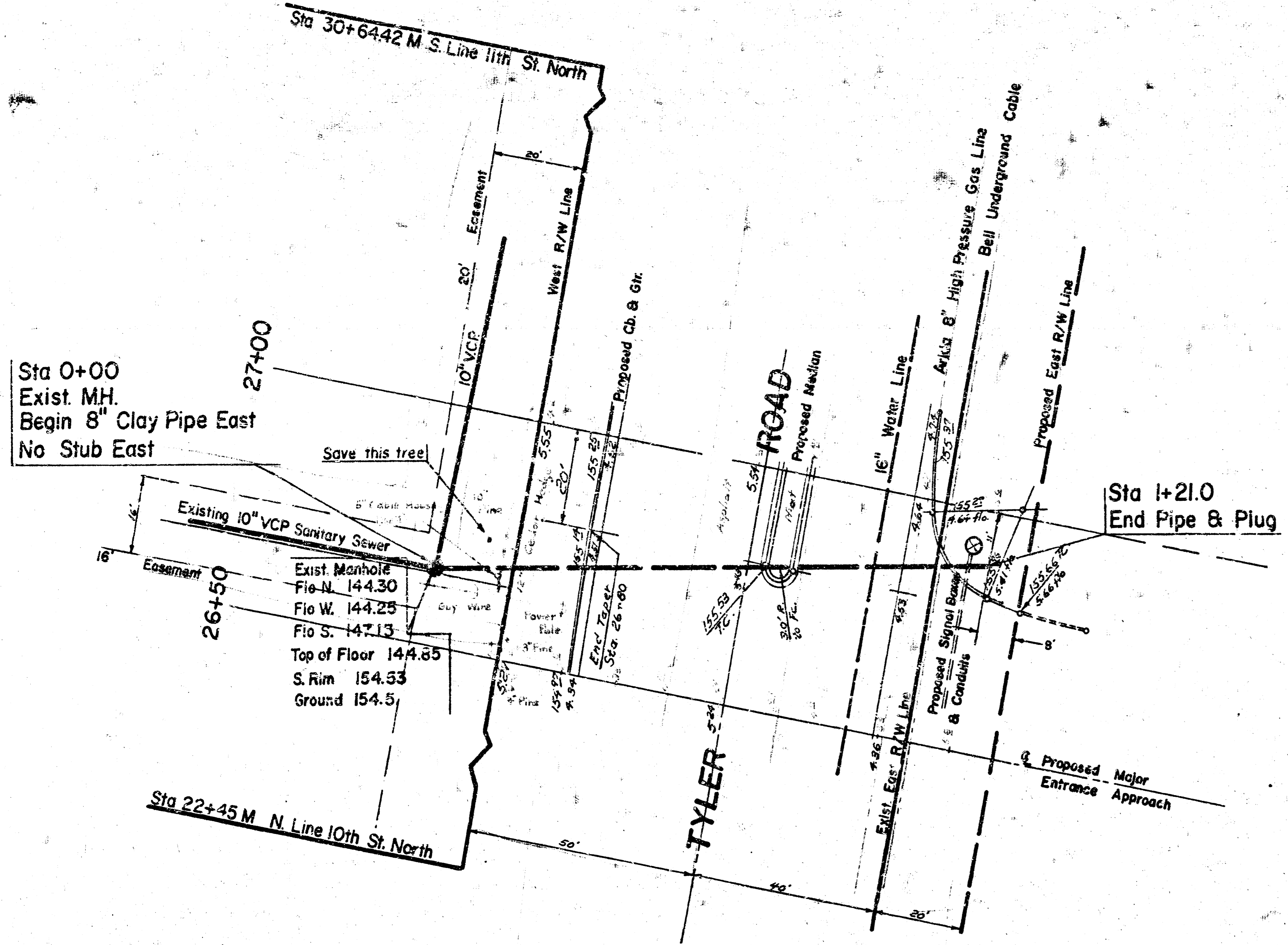
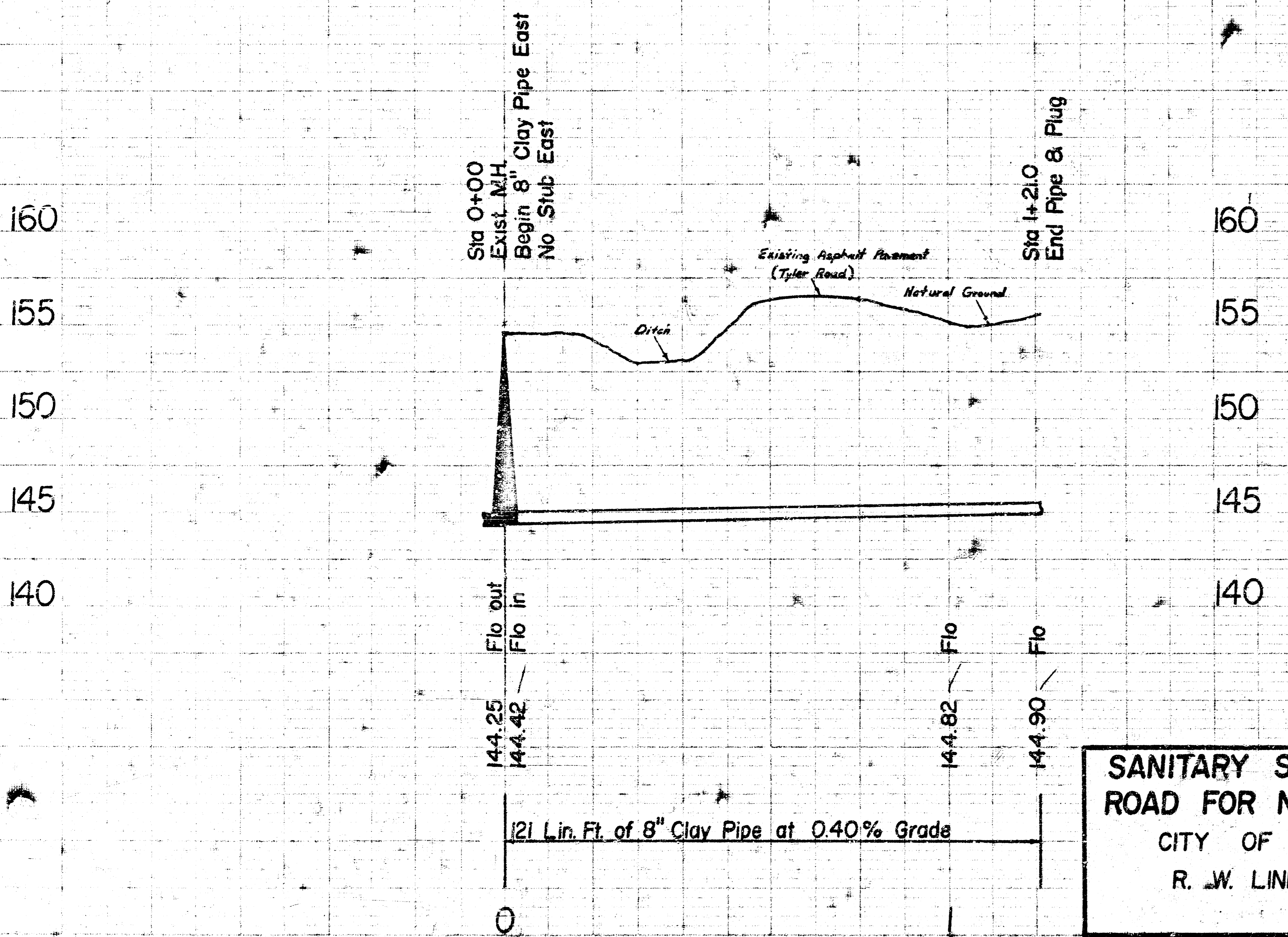
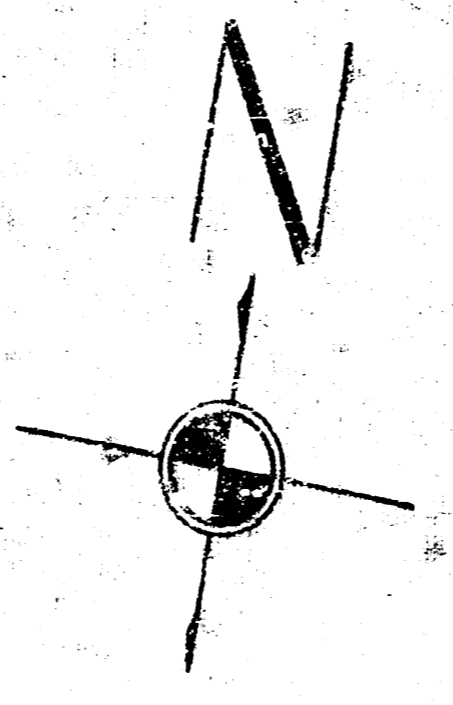


BM. 155.23 N.W. Corner of Concrete Step to House at 996 N. Tyler Road
 BM. 154.53 "X" on SE. Corner of N. Hubbard to R.C.B. west side Tyler at 10th. St.



Plan Scale 1" = 20'
 Profile Scale 1" = 20' Horz.
 1" = 5' Vert.



21 Lin. Ft. of 8" Clay Pipe at 0.40% Grade

SANITARY SEWER CROSSING TYLER ROAD FOR NORTHWEST HIGH SCHOOL
 CITY OF WICHITA, KANSAS
 R. W. LINN CITY ENGINEER
 PROJECT NO. DAKD575122

14
 22
 2
 11