

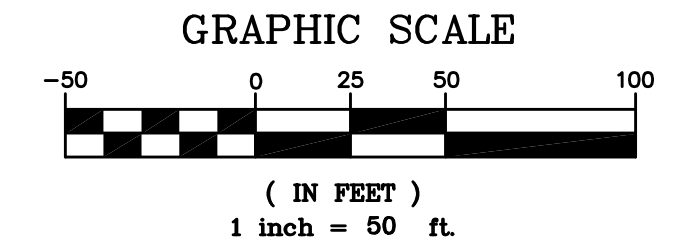
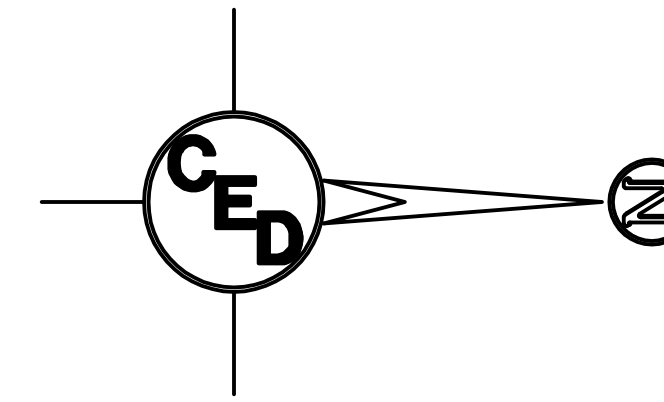
# EROSION CONTROL PLAN

## BAEHR STREET PAVING IMPROVEMENTS

### WICHITA, SEDGWICK COUNTY, KANSAS

Subject Area=1.70 Acres  
Disturbed Area=±1.70 Acres  
Proposed Impervious Area=±0.77 Acres

Contractor shall install erosion control devices under Best Management Practices, BMP's, as shown but not limited to the call-outs on this plan. Contractor will be required to install additional BMP's as required when additional areas begin to erode that are not already mentioned on this plan. (See Erosion Control Sheets 15-19 for more information.)



- Proposed 5" A.C. Pavement on 5" Crushed Rock Base
- Proposed Concrete Curb & Gutter
- Back of Curb Protection

UTILITY LEGEND	
	= Fire Hydrant
	= Water Meter
	= Water Valve
	= Gas Meter
	= Gas Valve
	= Telephone Riser
	= Mailbox
	= Flag Pole
	= SS Manhole
	= SWS Manhole
	= Sign
	= Misc. Post
	= Guy Anchor
	= Power Pole
	= Light Pole
	= Deciduous Tree or Shrub
	= Existing Fence
	= Right of Way Line
	= Underground Telephone
	= Underground Electric
	= Overhead Electric
	= Water Line
	= Sanitary Sewer
	= Gas Line
	= Cable TV or Fiber Optic

Contractor Shall Seed In Kind Disturbed Areas Within Baehr Street ROW Along Length of Project. Contractor Shall Refer To General Note No. 22 on Title Sheet For Restoration of Disturbed Grass Areas.

Contractor Shall Install "Inlet Protection" At New Curb Inlet Locations In Accordance With The Details And Notes On Sheets 15-19.

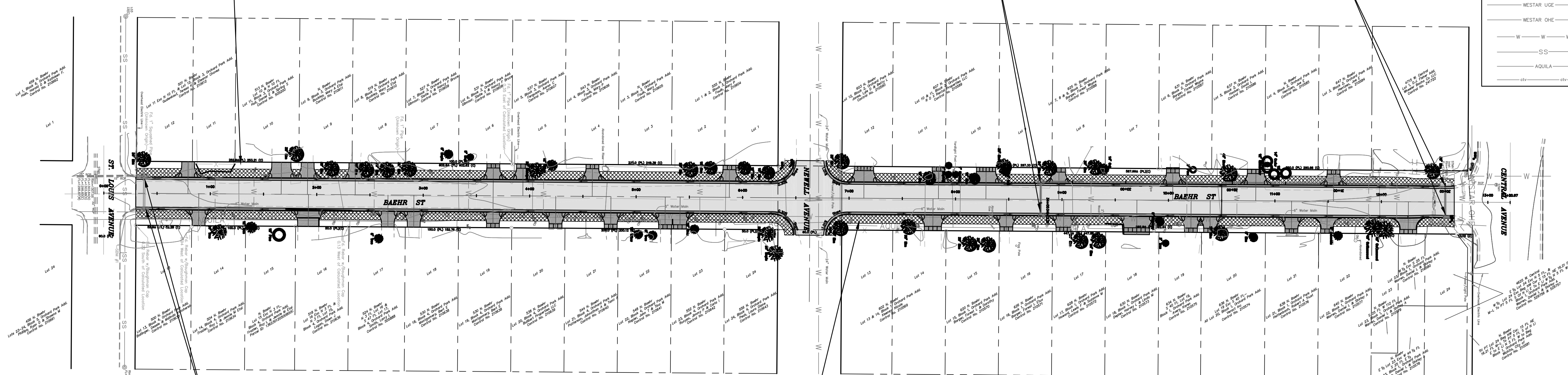
Contractor Shall Install "Inlet Protection" At New Curb Inlet Locations In Accordance With The Details And Notes On Sheets 15-19.

Contractor Shall Install "Inlet Protection" At New Curb Inlet Location In Accordance With The Details And Notes On Sheets 15-19.

Contractor Shall Install 1599 S.Y. of 8' Wide "Back of Curb Protection" (Curlex 1 Excelsior Erosion Blanket) Behind Back of Curb Along the Length of Project. Contractor Shall Refer To General Note No. 22 on Title Sheet For Restoration of Disturbed Grass Areas. (See BMP Detail Sheet's 15-19 for Details.)

- BENCHMARKS:**
- SBM #1 - "C" T/C N. Side St. Louis ±50' E. & ±15' N. of C Intersection St. Louis Ave. & Baehr St.
  - SBM #2 - 1/2" Capped Rebar w/Savoy Ruggles & Bohm Cap ±@ SW Corner Intersection Newell Ave. & Baehr St.
  - SBM #3 - "C" T/C N. Side Handicap Ramp SW Corner Intersection Central Ave. & Baehr St.

UTILITIES SHOWN REPRESENT THE BEST INFORMATION AVAILABLE FOR DESIGN. ADDITIONAL UTILITIES MAY BE PRESENT ON THIS PROJECT. THE CONTRACTOR SHALL BE RESPONSIBLE FOR DETERMINING THE EXACT LOCATION, DEPTH AND SIZE OF ALL UNDERGROUND UTILITIES PRIOR TO CONSTRUCTION. THE CONTRACTOR SHALL BE LIABLE FOR ANY DAMAGE CAUSED BY THE FAILURE TO DO SO.



**SURVEY DISCLAIMER:**  
TOPOGRAPHIC SURVEY USED IN PREPARING PLANS WAS PROVIDED BY GARBER SURVEYING SERVICE, (620) 665-7032, 423 WEST FIRST AVE., HUTCHINSON, KS. ENGINEER DOES NOT GUARANTEE SURVEY ELEVATIONS FOR ACCURACY. CONTRACTOR SHALL VERIFY ELEVATIONS AND NOTIFY ENGINEER OF ANY DISCREPANCIES.

<b>PAVING IMPROVEMENTS FOR</b>		
<b>EROSION CONTROL PLAN</b>		
BAEHR ST., WICHITA, SEDGWICK COUNTY, KANSAS		
CED PROJ. NO.: 20071583		
<b>CERTIFIED ENGINEERING DESIGN, P.A.</b>		
810 WEST DOUGLAS, SUITE C		
WICHITA, KANSAS 67203		
PH.(316)262-8808 FAX.(316)262-1669		
DESIGNED: HDF	SCALE: 1"=50'	SHEET 3
DRAWN: JDT	DATE: 10-07	
CHECKED: HDF	CED FILE: Baehr St-Base	TOTAL 24