

UTILITY LEGEND

= Fire Hydrant	= Flag Pole
= Water Meter	= SS Manhole
= Water Valve	= SWS Manhole
= Gas Meter	= Sign
= Gas Valve	= Misc. Post
= Telephone Riser	= Guy Anchor
= Mailbox	= Power Pole
= Light Pole	
= Deciduous Tree or Shrub	
= Existing Fence	
= Right of Way Line	
= Underground Telephone	
= Underground Electric	
= Water Line	
= Sanitary Sewer	
= Gas Line	
= Cable TV or Fiber Optic	

- Proposed 5" A.C. Pavement on 5" Crushed Rock Base
- Proposed Concrete Curb & Gutter
- Exist. Road Gravel To Be Removed
- Propose Pavement Removal

BENCHMARKS:
 SBM #1 - "1" T/C N. Side St. Louis ±50' E. & ±15' N. of CL Intersection St. Louis Ave. & Baehr St.

SBM #2 - 1/2" Capped Rebar w/Savoy Ruggles & Bohm Cap ± SW Corner Intersection Newell Ave. & Baehr St.

SBM #3 - "0" T/C N. Side Handicap Ramp SW Corner Intersection Central Ave. & Baehr St.

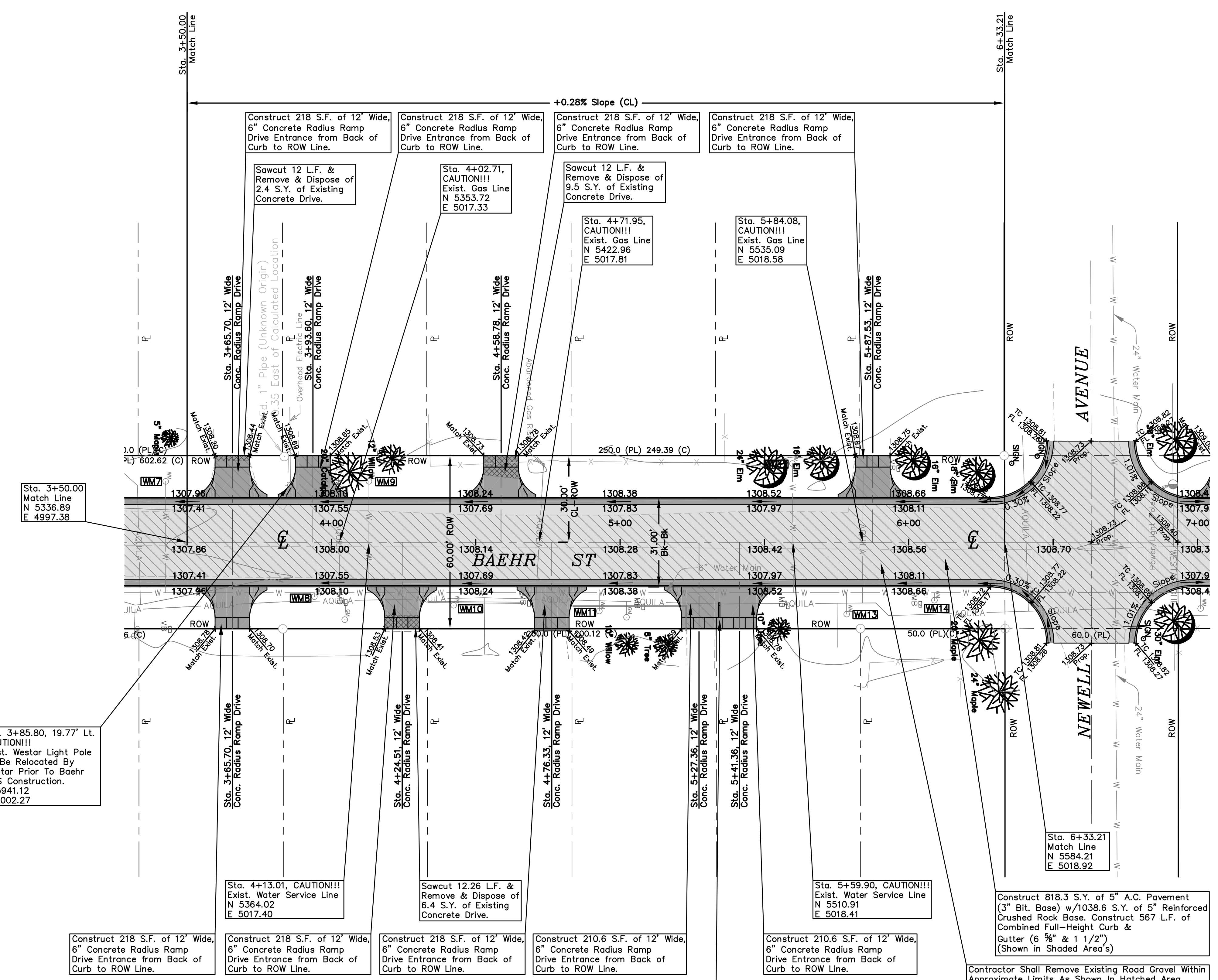
UTILITIES SHOWN REPRESENT THE BEST INFORMATION AVAILABLE FOR DESIGN. ADDITIONAL UTILITIES MAY BE PRESENT ON THIS PROJECT. THE CONTRACTOR SHALL BE RESPONSIBLE FOR DETERMINING THE EXACT LOCATION, DEPTH AND SIZE OF ALL UNDERGROUND UTILITIES PRIOR TO CONSTRUCTION. THE CONTRACTOR SHALL BE LIABLE FOR ANY DAMAGE CAUSED BY THE FAILURE TO DO SO.

PAVING PLAN FOR
BAEHR STREET
 WICHITA, SEDGWICK COUNTY, KANSAS
 CED PROJ. NO.: 20071583
CERTIFIED ENGINEERING DESIGN, P.A.
 810 WEST DOUGLAS, SUITE C
 WICHITA, KANSAS 67203
 PH.(316)262-8808 FAX.(316)262-1669

DESIGNED: HDF	SCALE: 1"=20'	SHEET
DRAWN: JDT	DATE: 10-07	6
CHECKED: HDF	CED FILE: Baehr St-Base	TOTAL 24

SEE GENERAL NOTE 15 ON TITLE SHEET FOR MAILBOX RELOCATIONS.

General Note: The Contractor Shall NOT Remove Any Trees Within Baehr St. ROW Unless Approved By The Engineer. Contractor Shall Exercise Care During Construction of Baehr St. So Not To Damage Any Trees.



WM1 - Water Meter

Water Meter Box Adjustment Table

WM #	BL Station (CL Baehr Street)	Feet Rt./Lt.	Existing Elevation	Proposed Elevation
8	3+94.11	18.87 Rt.	1308.08	None
9	4+13.01	21.08 Lt.	1308.75	1308.19
10	4+42.35	21.84 Rt.	1308.72	1308.29
11	4+52.82	23.85 Rt.	1308.41	None
12	5+59.90	27.24 Lt.	1308.87	1308.76
13	5+78.50	24.91 Rt.	1308.81	None
14	6+08.91	20.31 Rt.	1308.89	1308.76

Construct 5 L.F. of 6" Wide Full Height Monolithic Curb On West Side of Sidewalk Section To Split Prop. Drives.(Taper Each End of Curb) (Quantity of 2 Foot Section of Sidewalk Between Drives Are Figured In Drive Quantities.)