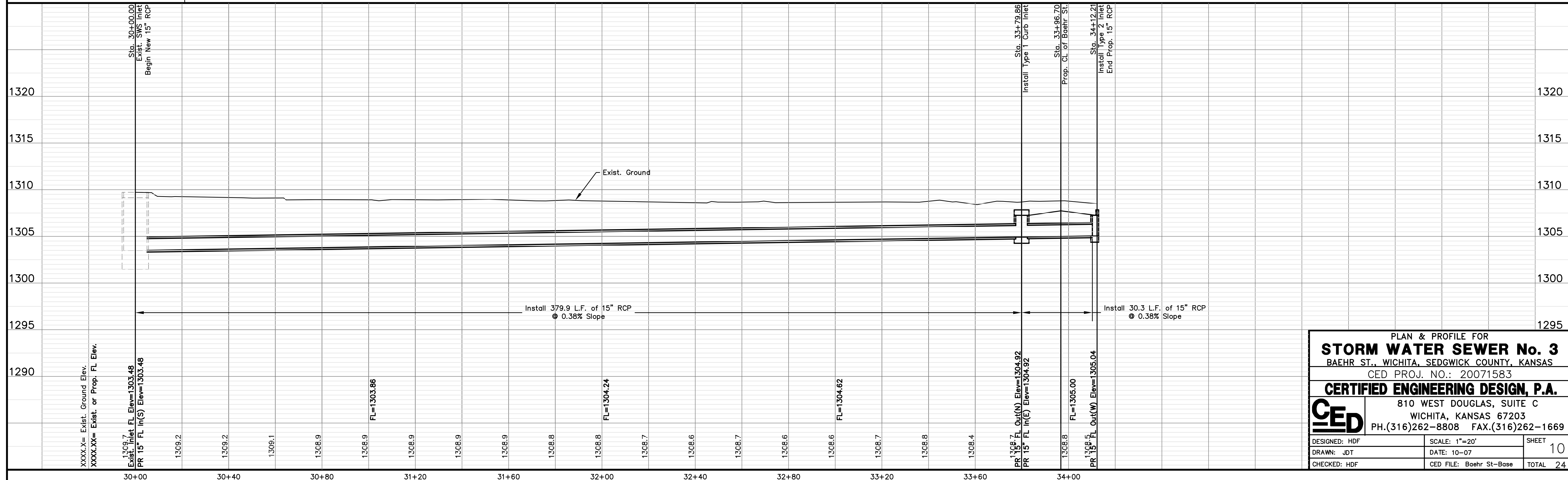


STORM WATER SEWER No. 3



PLAN & PROFILE FOR
STORM WATER SEWER No. 3
 BAEHR ST., WICHITA, SEDGWICK COUNTY, KANSAS
 CED PROJ. NO.: 20071583
CERTIFIED ENGINEERING DESIGN, P.A.
 810 WEST DOUGLAS, SUITE C
 WICHITA, KANSAS 67203
 PH.(316)262-8808 FAX.(316)262-1669

DESIGNED: HDF	SCALE: 1"=20'	SHEET 10
DRAWN: JDT	DATE: 10-07	TOTAL 24
CHECKED: HDF	CED FILE: Baehr St-Base	