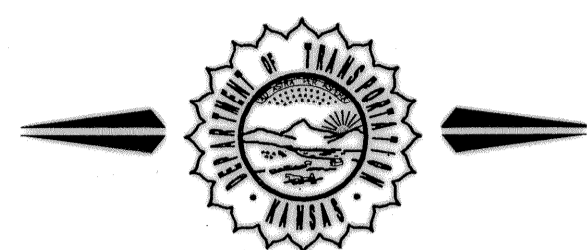


FHWA REGION NO.	STATE	PROJECT NO.	FISCAL YEAR	SHEET NO.	TOTAL SHEETS
7	KANSAS	87N-0378-01	2008	1	72

HSIP N-038(701)

STATE OF KANSAS
DEPARTMENT OF TRANSPORTATION



CONSTRUCTION PLANS FOR PROPOSED
CENTRAL AND TYLER
INTERSECTION IMPROVEMENTS

FEDERAL AID URBAN SYSTEM PROJECT

FOR
THE CITY OF WICHITA,
SEDGWICK COUNTY, KANSAS

Jim Armour, P.E., City Engineer
City Project No. 472-84655, 544-778596
O.C.A. No. 706974, 636206

MAY 2008

FINAL PLANS

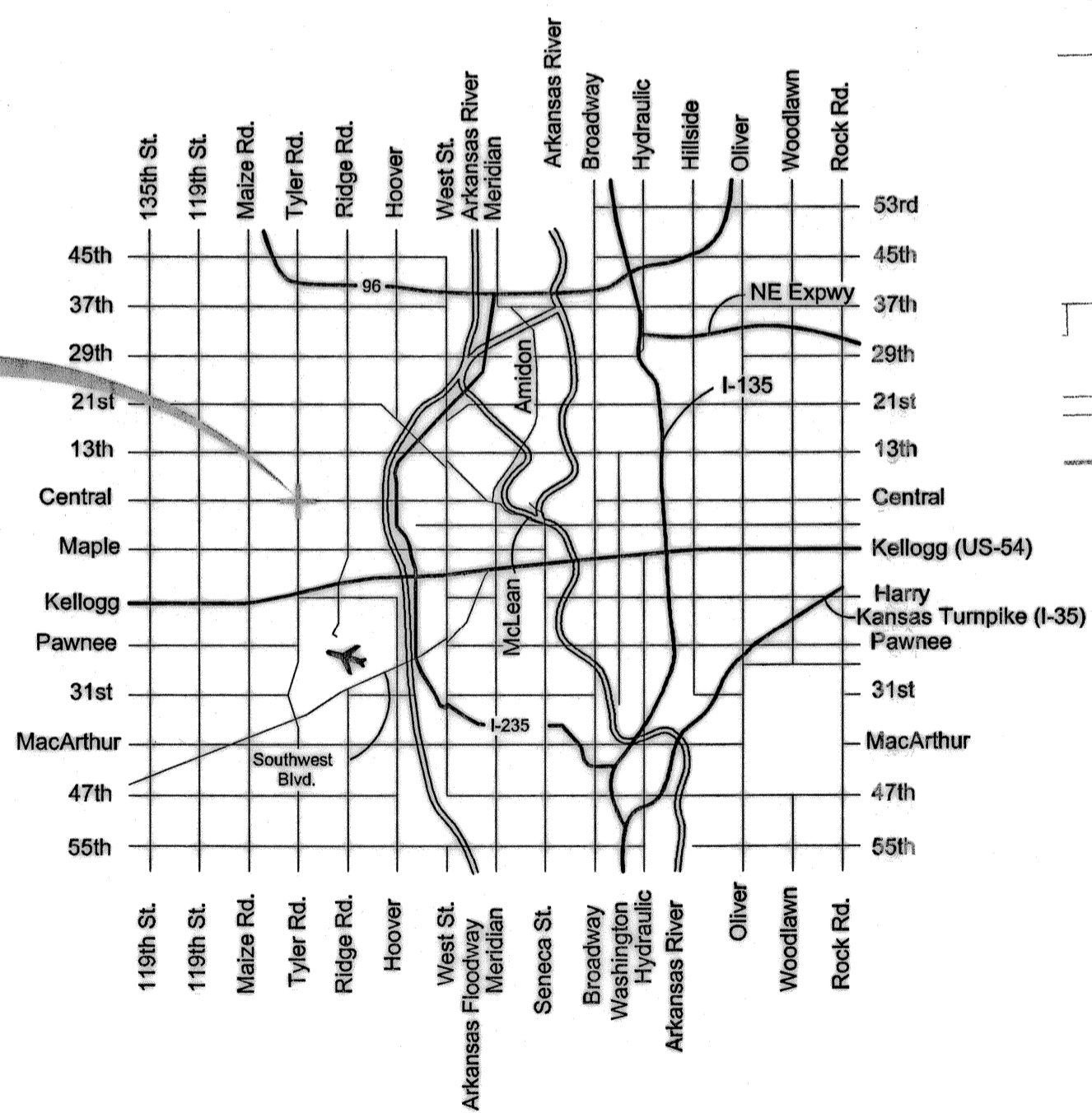
Index

- 1 Title Sheet
- 2 Key Sheet
- 3 General Notes
- 4 Typical Section
- 5-6 Central Ave. Paving Plans
- 7-10 Tyler Road Paving Plans
- 11-12 Intersection Details
- 13-15 Paving Details
- 16-24 Storm Water Sewer Plans
- 25 Outfall Detail
- 26-31 Storm Water Details
- 32 Drainage Plan
- 33 Erosion Control Plan
- 34-37 Erosion Control Details
- 38 Sod Plan
- 39-40 Waterline Relocation Plan
- 41 Standard Water Detail
- 42-47 Marking and Signing Plan
- 48 Intersection Signal Plan
- 49 Intersection Wiring Plan
- 50-52 Marking and Signing Details
- 54-58 Construction Sequencing Plan
- 59-65 Landscape Plan
- 66 Summary of Quantities
- 67 Recapitulation of Quantities
- 68-72 Cross Sections

DESIGN DESIGNATION

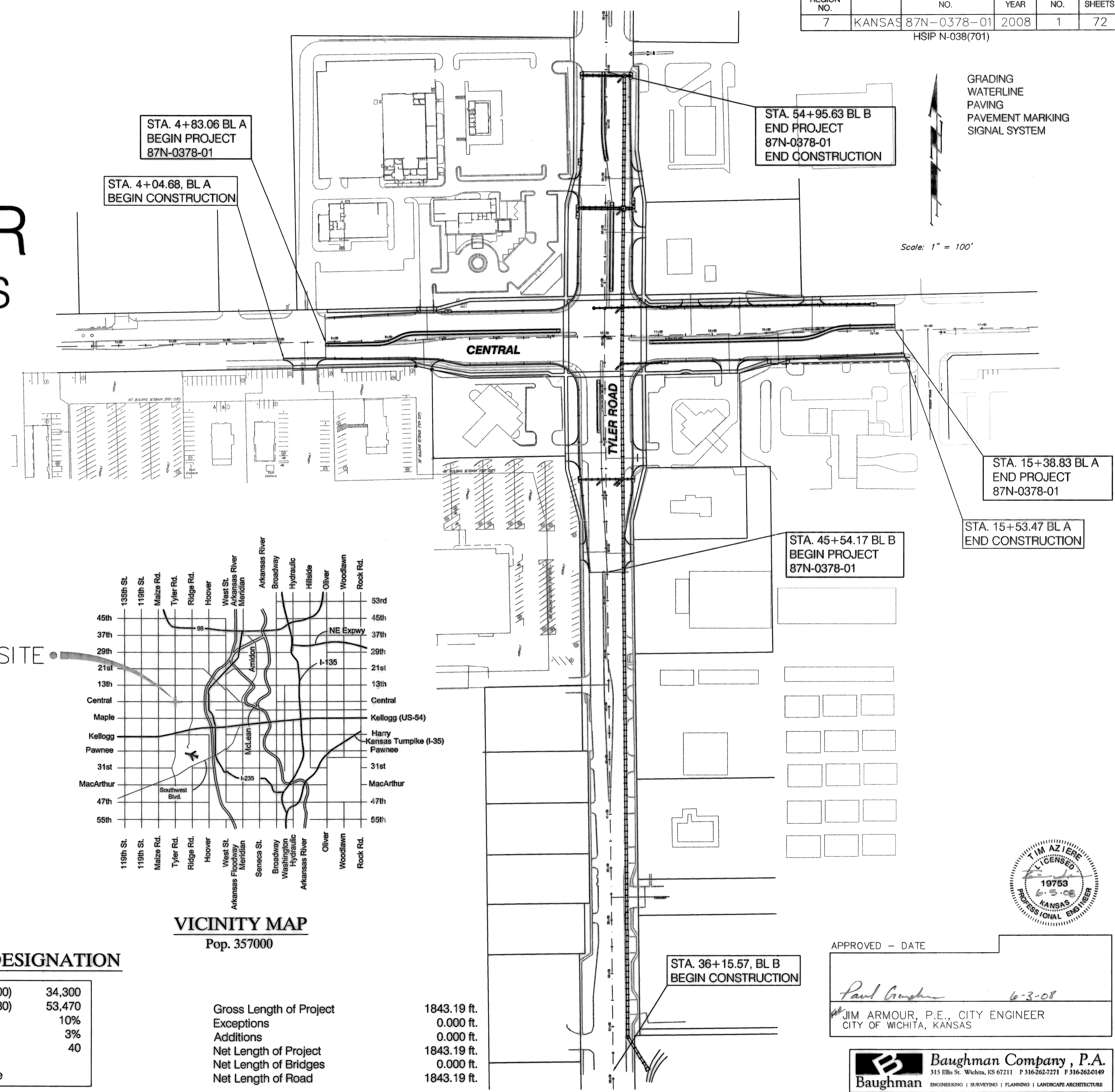
AADT (2000)	34,300
AADT (2030)	53,470
DHV	10%
T	3%
V	40
C of A	
Clear Zone	

SITE



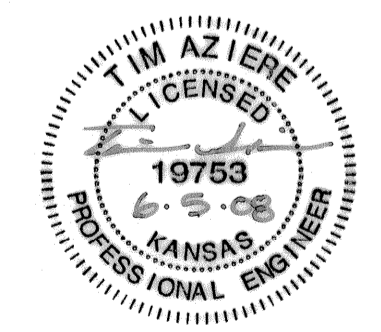
VICINITY MAP

Pop. 357000



APPROVED - DATE

Paul Gush 6-3-08
JIM ARMOUR, P.E., CITY ENGINEER
CITY OF WICHITA, KANSAS



Baughman Company, P.A.
315 Ellis St. Wichita, KS 67211 P 316-262-7271 F 316-262-0149
ENGINEERING | SURVEYING | PLANNING | LANDSCAPE ARCHITECTURE