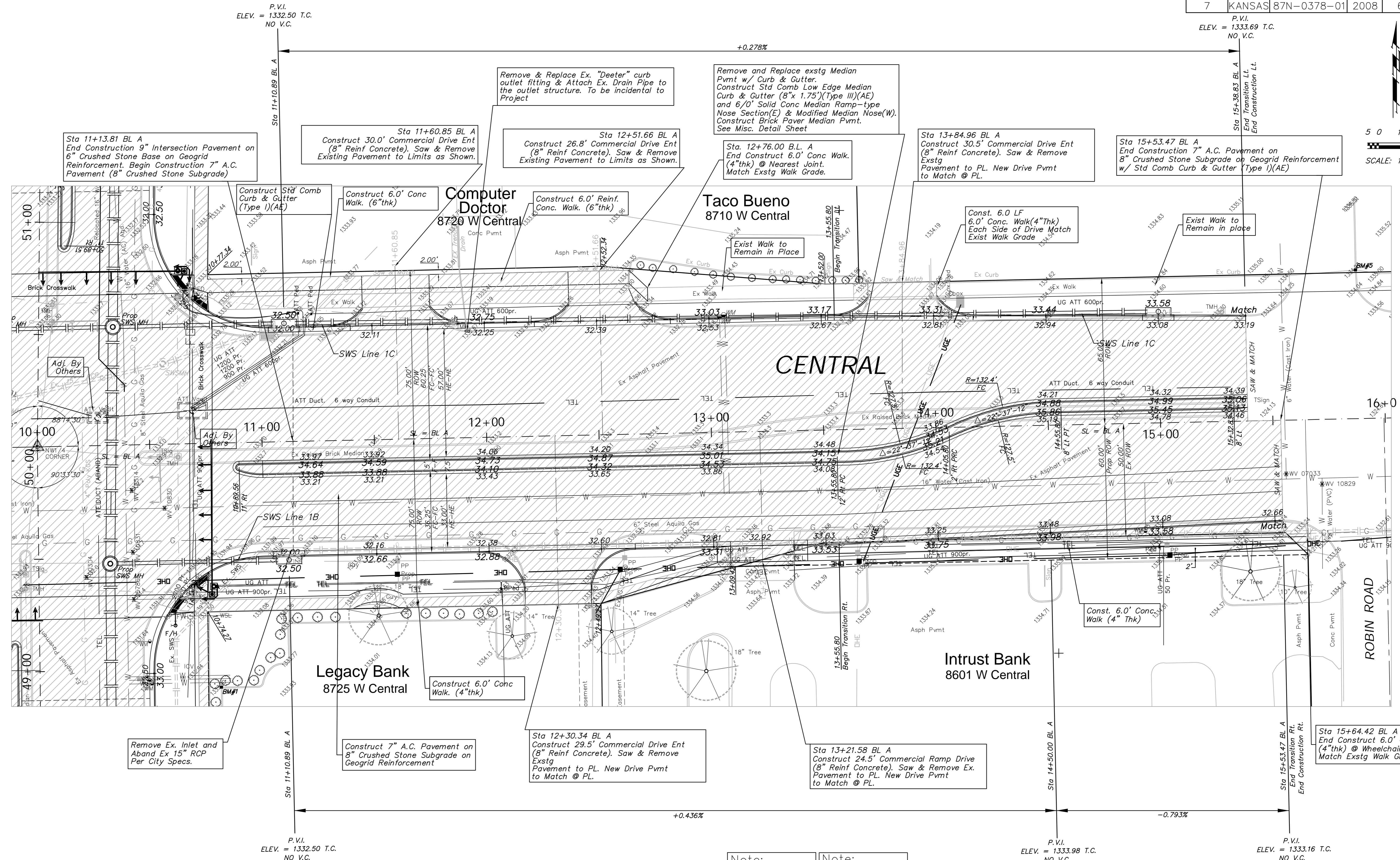
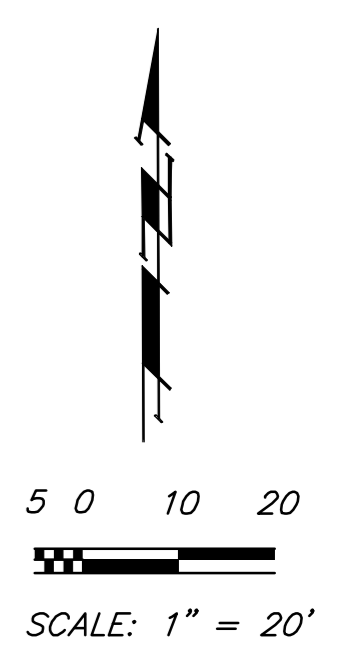


FHWA REGION NO.	STATE	PROJECT NO.	FISCAL YEAR	SHEET NO.	TOTAL SHEETS
7	KANSAS	87N-0378-01	2008	6	72



Sta 11+13.81 BL A
End Construction 9" Intersection Pavement on 6" Crushed Stone Base on Geogrid Reinforcement. Begin Construction 7" A.C. Pavement (8" Crushed Stone Subgrade)

Sta 11+60.85 BL A
Construct 30.0' Commercial Drive Ent (8" Reinf Concrete). Saw & Remove Existing Pavement to Limits as Shown.

Remove & Replace Ex. "Deeter" curb outlet fitting & Attach Ex. Drain Pipe to the outlet structure. To be incidental to Project

Sta 12+51.66 BL A
Construct 26.8' Commercial Drive Ent (8" Reinf Concrete). Saw & Remove Existing Pavement to Limits as Shown.

Remove and Replace exstg Median Pvmnt w/ Curb & Gutter. Construct Std Comb Low Edge Median Curb & Gutter (8"x 1.75")(Type III)(AE) and 6/0' Solid Conc Median Ramp-type Nose Section(E) & Modified Median Nose(W). Construct Brick Paver Median Pvmnt. See Misc. Detail Sheet

Sta 12+76.00 B.L. A
End Construct 6.0' Conc Walk (4"thk) @ Nearest Joint. Match Exstg Walk Grade.

Sta 13+84.96 BL A
End Construct 30.5' Commercial Drive Ent (8" Reinf Concrete). Saw & Remove Exstg Pavement to PL. New Drive Pvmnt to Match @ PL.

Sta 15+53.47 BL A
End Construction 7" A.C. Pavement on 8" Crushed Stone Subgrade on Geogrid Reinforcement w/ Std Comb Curb & Gutter (Type I)(AE)

P.V.I.
ELEV. = 1333.69 T.C.
NO V.C.

P.V.I.
ELEV. = 1332.50 T.C.
NO V.C.

P.V.I.
ELEV. = 1332.50 T.C.
NO V.C.

P.V.I.
ELEV. = 1333.98 T.C.
NO V.C.

P.V.I.
ELEV. = 1333.16 T.C.
NO V.C.

Note:
Trees/Shrubs to be removed are marked thus:

Note:
Pavement, Sidewalks, and Etc. To Be Removed Are Indicated By:

Drawing File: E:\eng\central and tyler intersection\land\base.dwg
Project No. 0510E393 CAPITAL IMPROVEMENT PROJECT
Design: T. Azlere
Drawn: J. F. Bradley
Approved: J. F. Bradley
Scale: 1:20
CENTRAL EAST PAVING
CENTRAL & TYLER INTERSECTION
PAVEMENT, STORM WATER SEWER, TRAFFIC CONTROL IMPROVEMENTS

Baughman Company, P.A.
315 Ellis St. Wichita, KS 67211 P 316-262-7271 F 316-262-0149
ENGINEERING | SURVEYING | PLANNING | LANDSCAPE ARCHITECTURE

MAY 2008
SHEET 6 OF 72