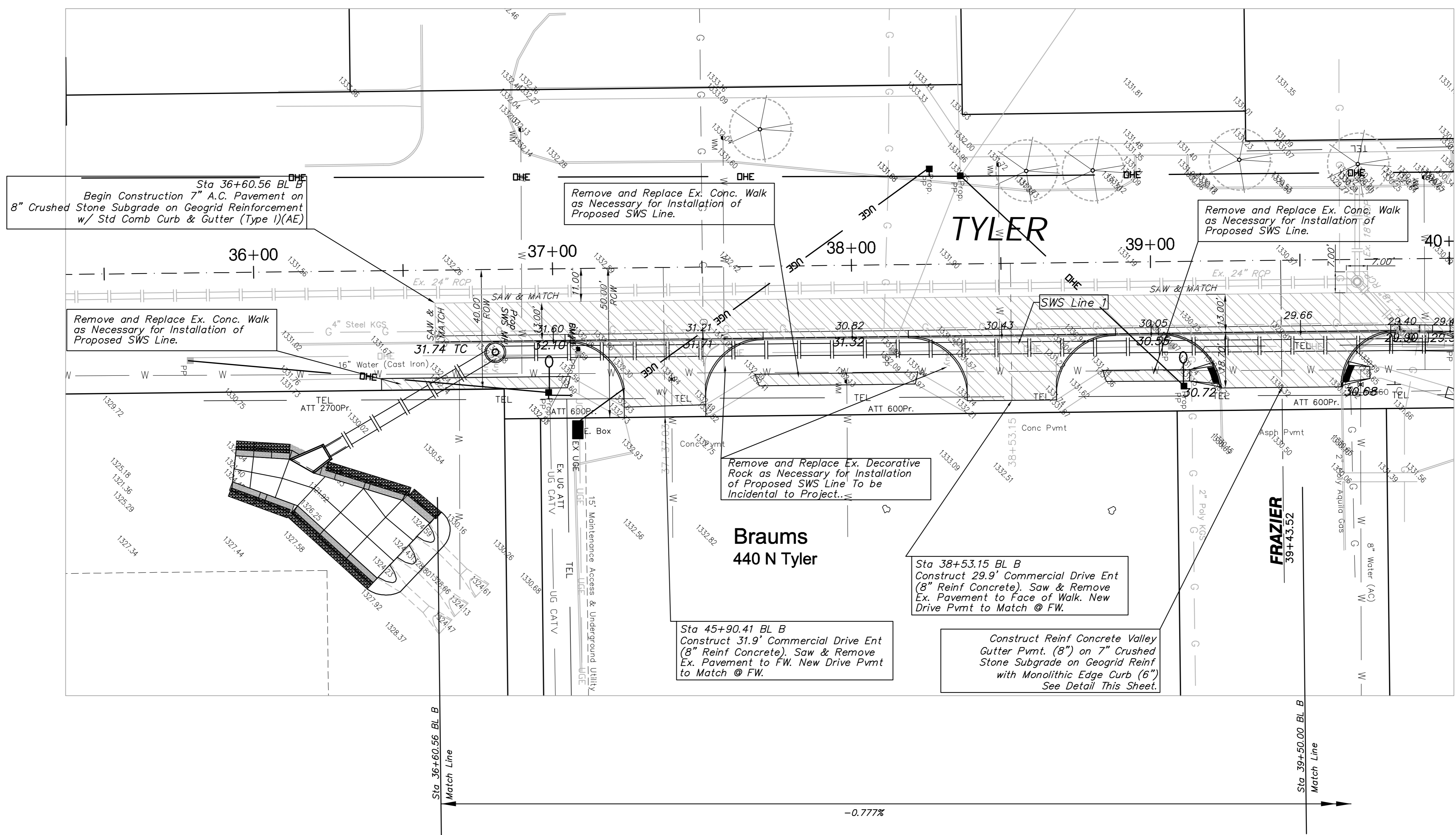
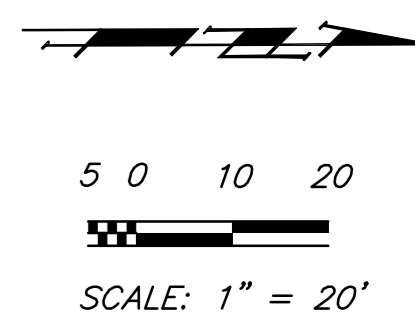


FHWA REGION NO.	STATE	PROJECT NO.	FISCAL YEAR	SHEET NO.	TOTAL SHEETS
7	KANSAS	87N-0378-01	2008	7	72



Valley Gutter Detail

Note:
Trees/Shrubs to be removed are marked thus:

Note:
Pavement, Sidewalks, and Etc. To Be Removed Are Indicated By:

Design File: E:\eng\central and tyler intersection\land\base.dwg
 Design: T. Azlere
 Drawn: J. F. Bradley
 Approved: J. F. Bradley
 Scale: 1:20

Project No. 0510E393 CAPITAL IMPROVEMENT PROJECT
CENTRAL & TYLER PAVING
CENTRAL & TYLER INTERSECTION
 PAVEMENT, STORM WATER SEWER, TRAFFIC CONTROL IMPROVEMENTS

Baughman Company, P.A.
 315 Ellis St. Wichita, KS 67211 P 316-262-7271 F 316-262-0149
 ENGINEERING | SURVEYING | PLANNING | LANDSCAPE ARCHITECTURE