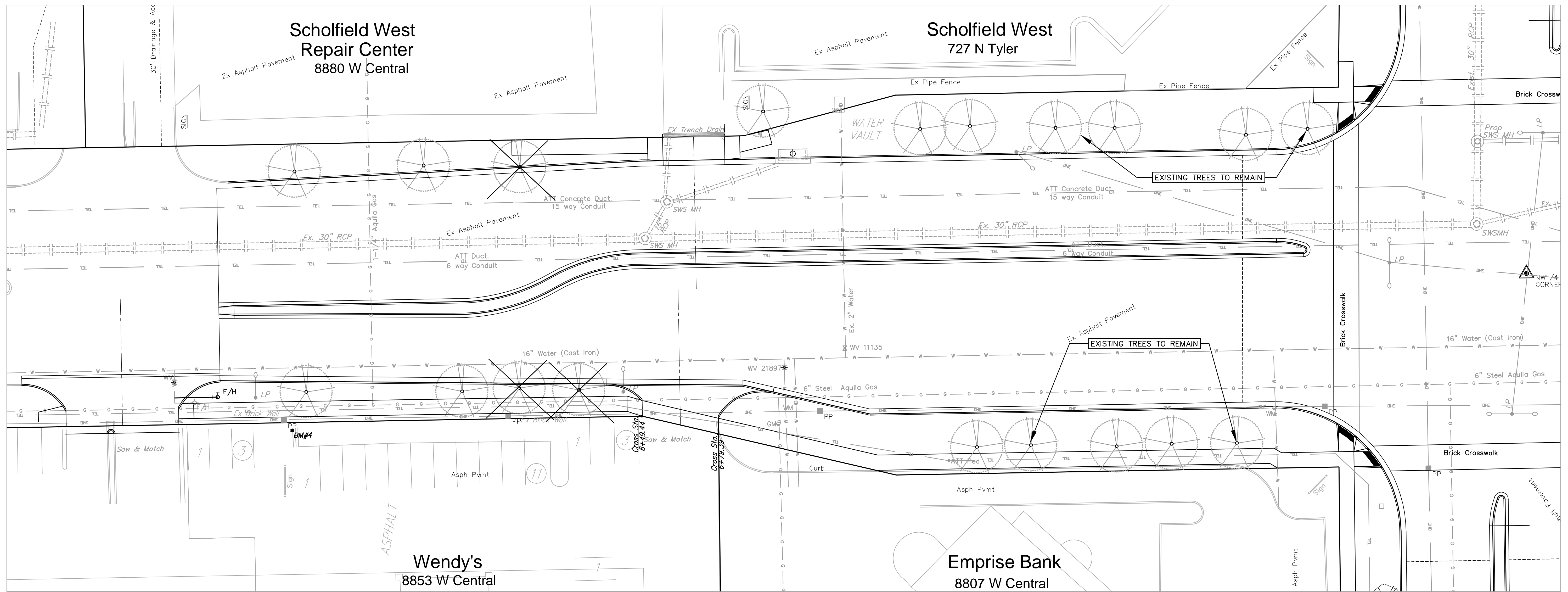
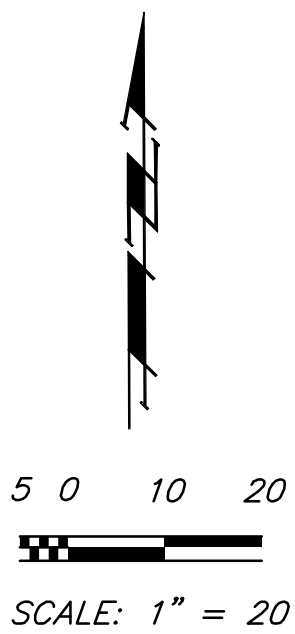


FHWA REGION NO.	STATE	PROJECT NO.	FISCAL YEAR	SHEET NO.	TOTAL SHEETS
7	KANSAS	87N-0378-01	2007	59	72



No Trees Planted on This Sheet
Due to Utility and ROW Conflicts

Note:
Trees/Shrubs to be removed are marked thus:

Note:
Pavement, Sidewalks, and Etc. To Be Removed Are Indicated By:

Drawing File: E:\eng\central and tyler intersection\landscape\landscape.dwg
Design: DML
Drawn:
Approved: J. F. Bradley
Scale: 1:20

Project No. 05-10E393 CAPITAL IMPROVEMENT PROJECT
CENTRAL WEST LANDSCAPE
CENTRAL & TYLER INTERSECTION
PAVEMENT, STORM WATER SEWER, TRAFFIC CONTROL IMPROVEMENTS

Baughman Company, P.A.
315 Ellis St. Wichita, KS 67211 P 316-262-7271 F 316-262-0149
Baughman ENGINEERING | SURVEYING | PLANNING | LANDSCAPE ARCHITECTURE

MAY 2008
SHEET 59 OF 72