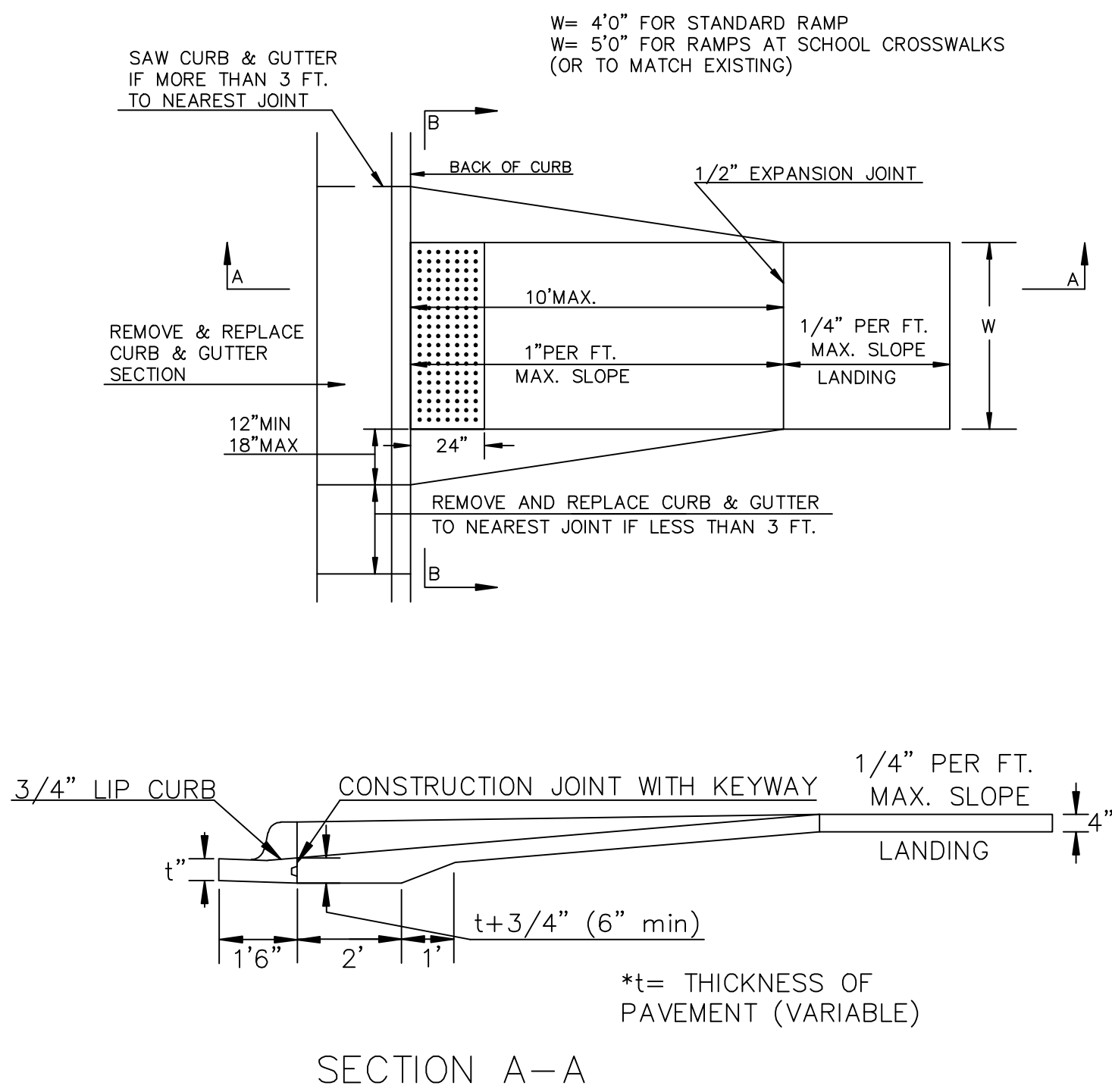
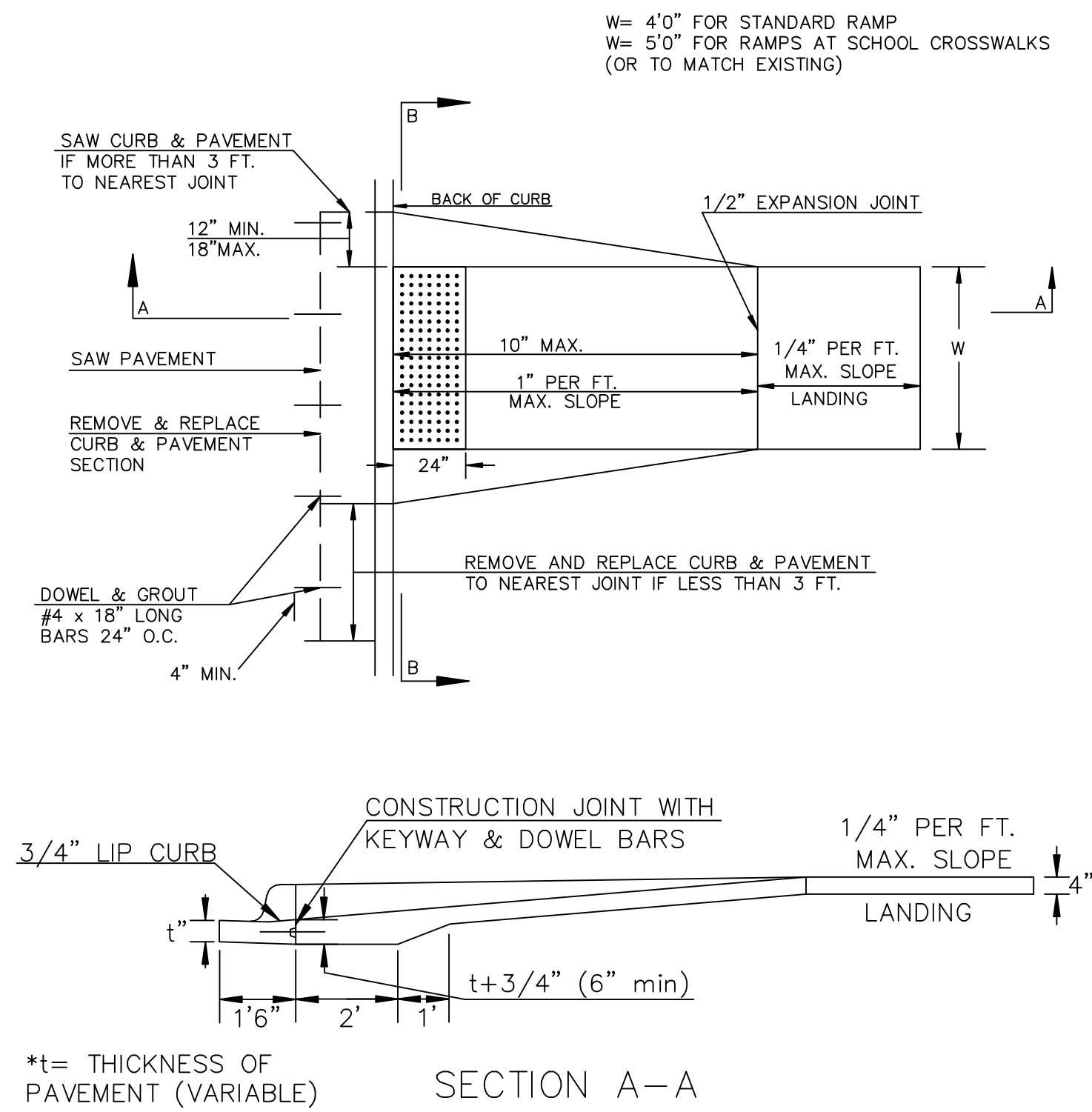


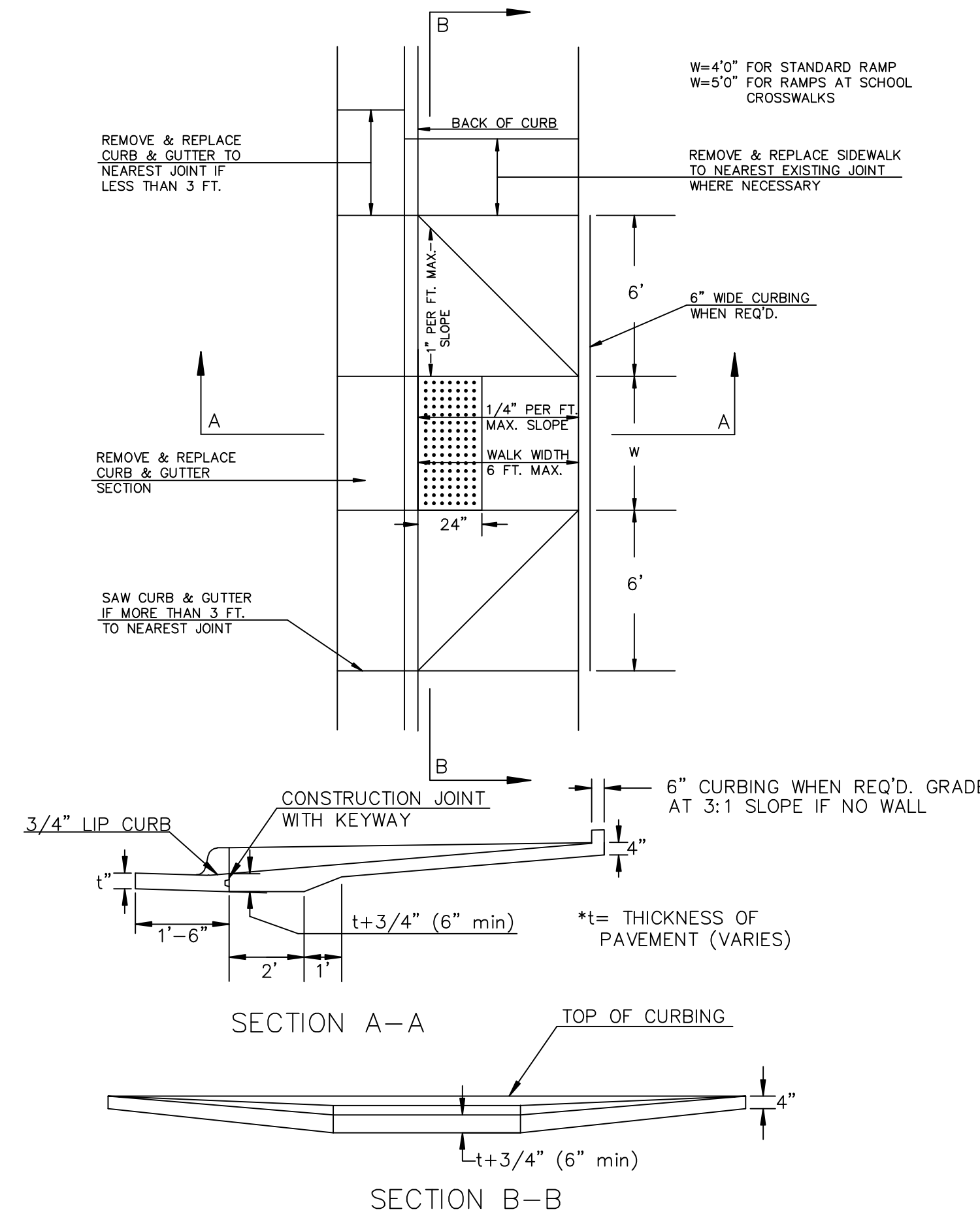
(TYPE A)  
STANDARD WHEELCHAIR RAMP  
CONSTRUCTION DETAIL FOR STREETS  
WITH COMBINED CURB & GUTTER



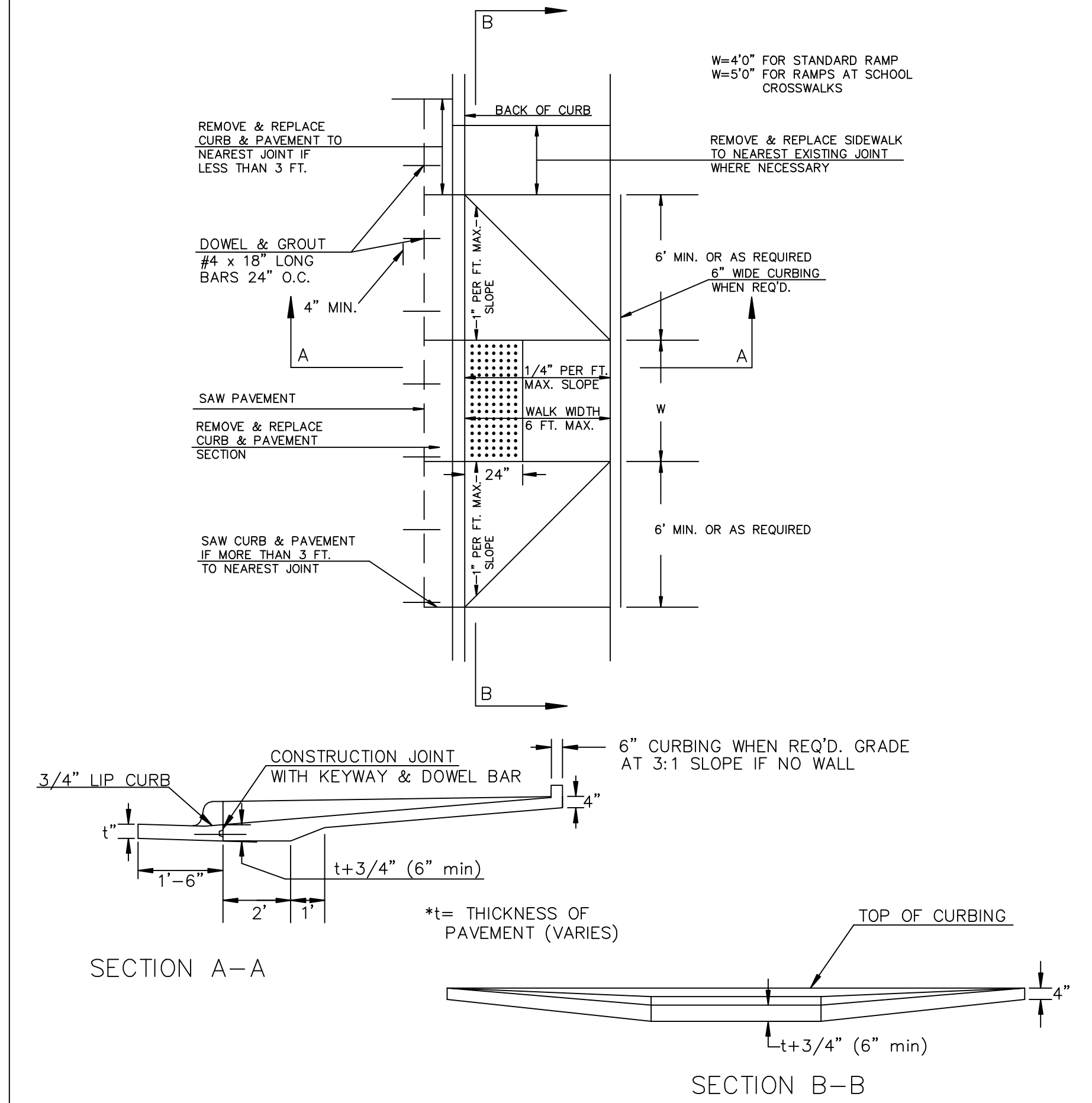
(TYPE A)  
STANDARD WHEELCHAIR RAMP CONSTRUCTION DETAIL FOR  
CONCRETE STREETS WITH MONOLITHIC CURB



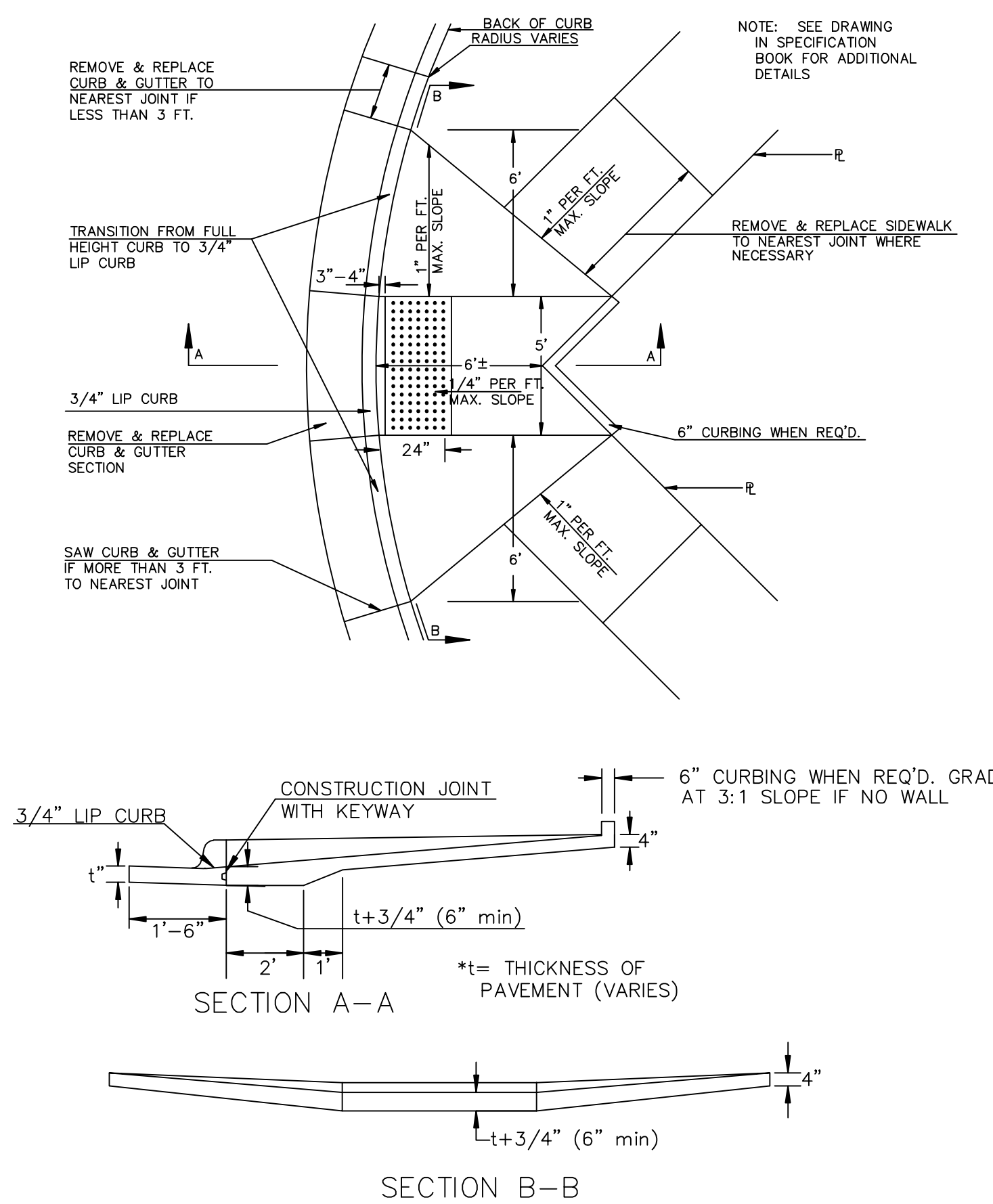
(TYPE B)  
STANDARD WHEELCHAIR RAMP CONSTRUCTION DETAIL FOR  
STREETS WITH COMBINED CURB & GUTTER AND FULL WALK



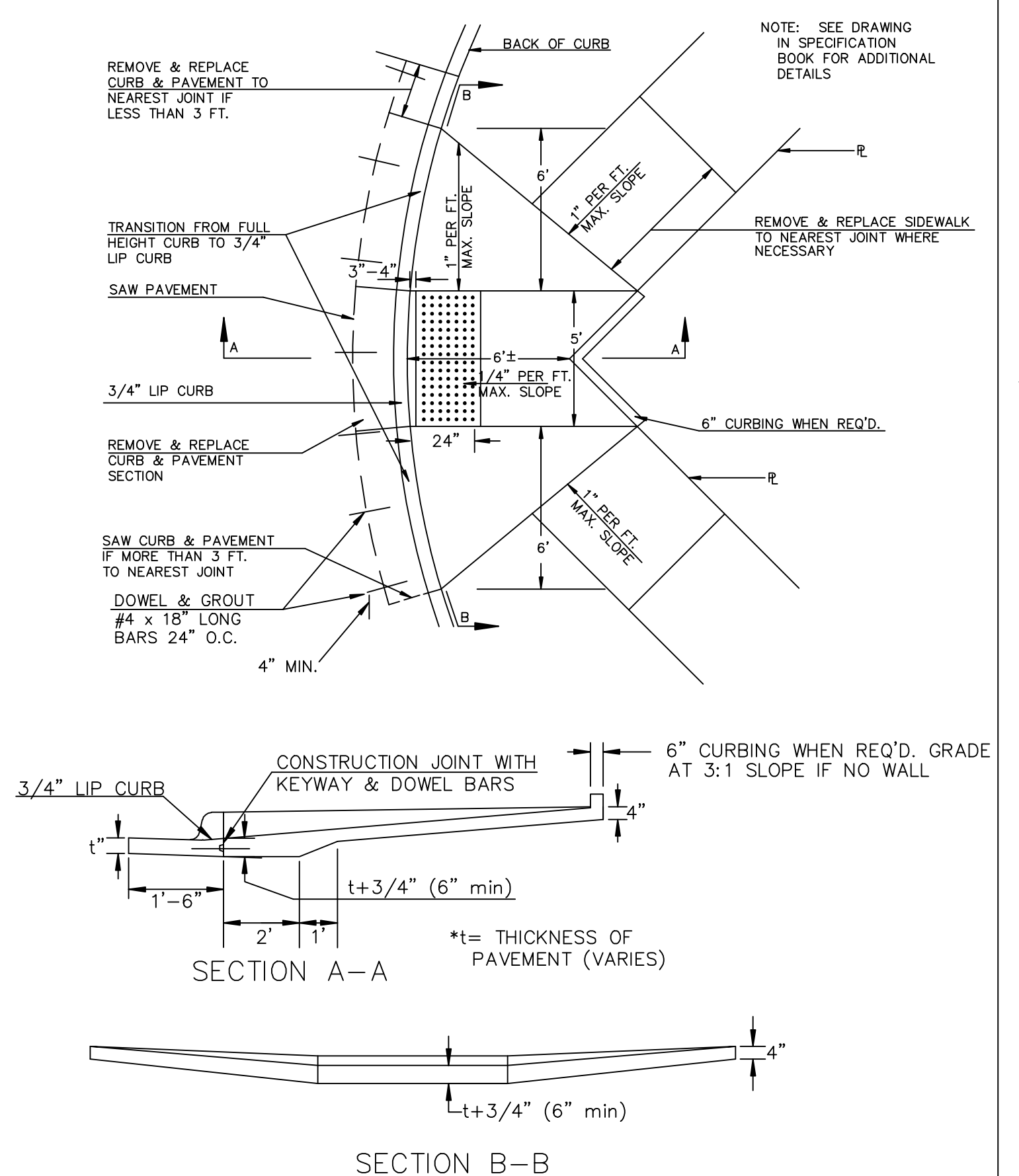
(TYPE B)  
STANDARD WHEELCHAIR RAMP CONSTRUCTION DETAIL FOR  
STREETS WITH MONOLITHIC CURB AND FULL WALK



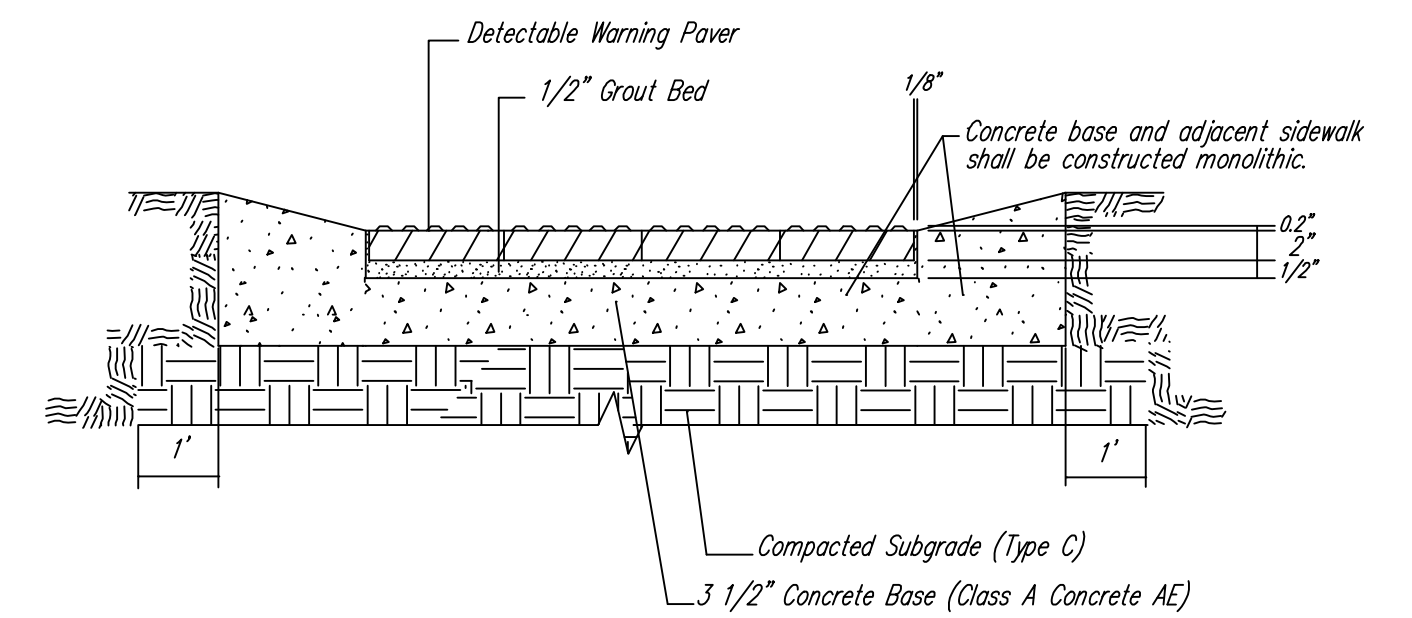
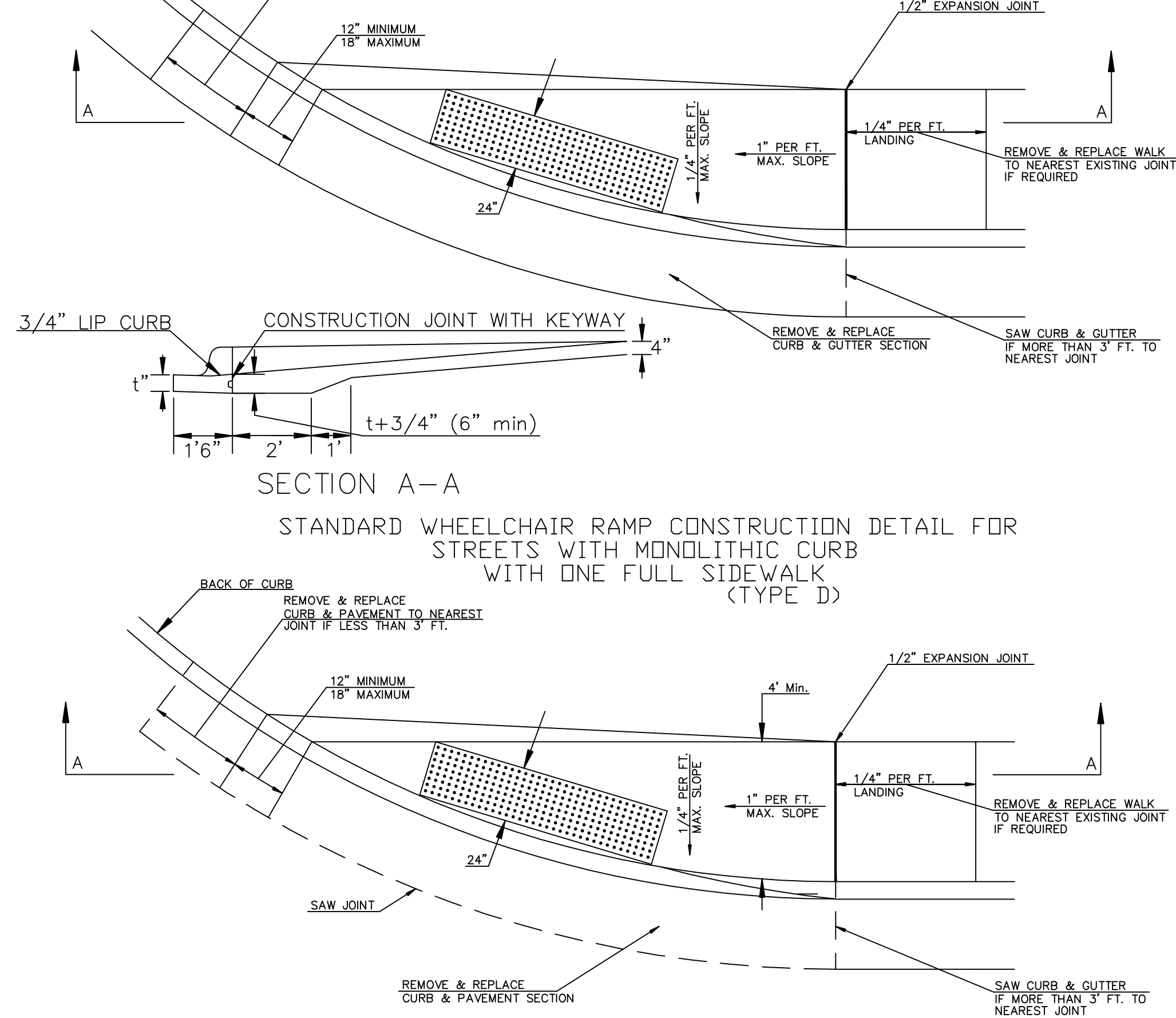
(TYPE C)  
STANDARD WHEELCHAIR RAMP CONSTRUCTION DETAIL FOR  
STREET WITH COMBINED CURB AND GUTTER ON RADIUS  
WITH 6'± FROM BACK OF CURB TO PROPERTY CORNER



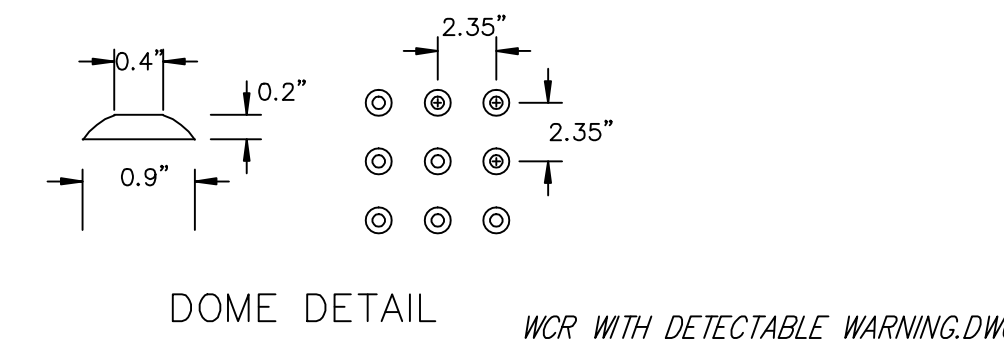
(TYPE C)  
STANDARD WHEELCHAIR RAMP CONSTRUCTION DETAIL FOR  
STREET WITH MONOLITHIC CURB ON RADIUS  
WITH 6'± FROM BACK OF CURB TO PROPERTY CORNER



(TYPE D)  
STANDARD WHEELCHAIR RAMP CONSTRUCTION DETAIL FOR  
STREETS WITH COMBINED CURB & GUTTER  
WITH ONE FULL SIDEWALK



TYPICAL SECTION DETECTABLE WARNING PAVER  
SECTION B-B  
NOTE: RAMPS TO COMPLY WITH LATEST FHWA GUIDELINES.  
HANOVER DETECTABLE WARNING PAVERS (OR AN APPROVED ALTERNATE) SHALL  
BE USED IN ALL WHEELCHAIR RAMPS. THE 11 3/4" RED 15' PAVES SHALL BE USED  
IN ALL APPLICATIONS.  
HANOVER ARCHITECTURAL PRODUCTS  
240 BENDER ROAD  
HANOVER, PA 17331  
1-717-637-0500  
www.hanoverpavers.com



REV. 7-23-03

**CITY OF WICHITA PUBLIC WORKS ENGINEERING**

**WHEELCHAIR RAMP DETAILS**

CITY ENGINEER  
JIM ARMOUR, P.E., L.S.

|  |                                |               |
|--|--------------------------------|---------------|
| PROJECT NUMBER<br>472-84714  | OCA NUMBER<br>785097<br>785098 | DATE<br>04/08 |
| CITY ENGINEER'S OFFICE<br>CITY HALL - SEVENTH FLOOR<br>455 NORTH MAIN STREET<br>WICHITA, KANSAS 67202-1620<br>(316) 268-4501<br>(316) 268-4114 FAX | DESIGN<br>JLA                  | DRAWN<br>MCG  |
| SHEET  |                                | 6 OF 12       |