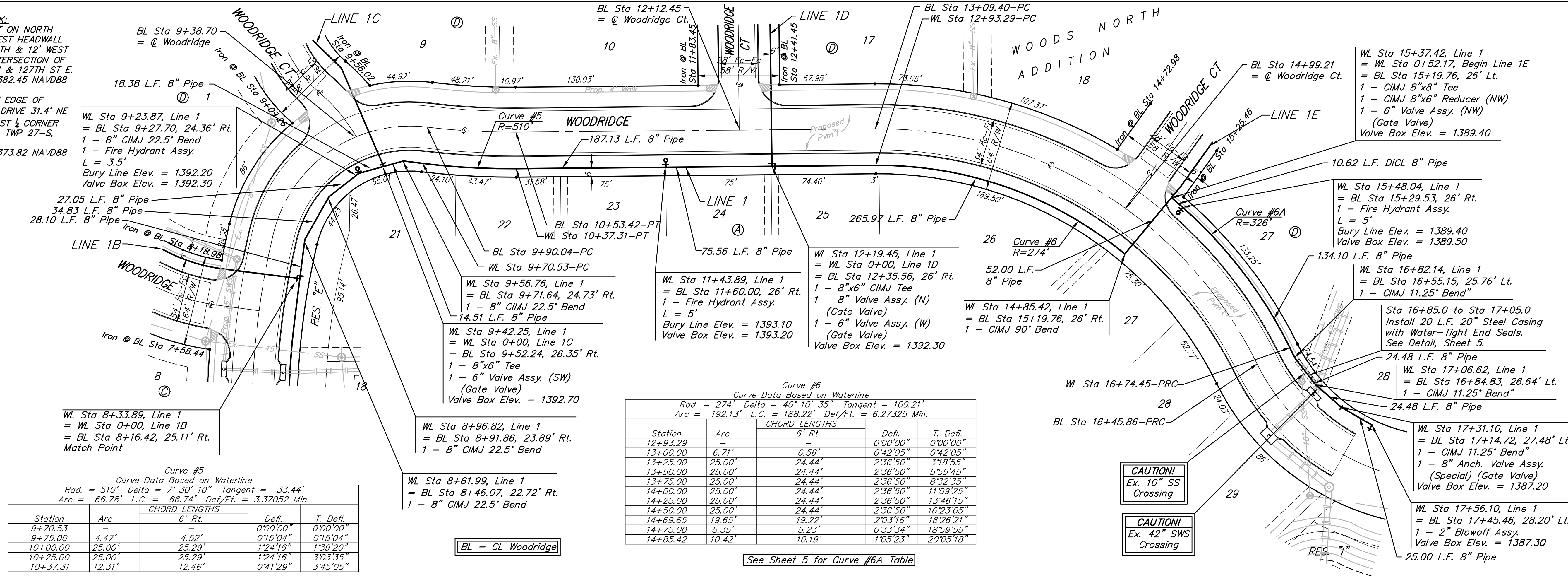
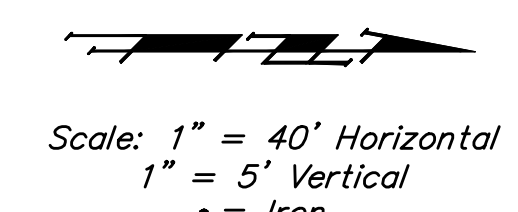


**BENCHMARK:**  
CROSS CUT ON NORTH  
END OF WEST HEADWALL  
137.5' SOUTH & 12' WEST  
OF THE EAST 1/4 CORNER  
OF SEC. 3, TWP 27-S,  
R-2-E.  
ELEV. = 1382.45 NAVD88

☉ OF WEST EDGE OF  
CONCRETE DRIVE 31.4' NE  
OF THE EAST 1/4 CORNER  
OF SEC. 3, TWP 27-S,  
R-2-E.  
ELEV. = 1373.82 NAVD88



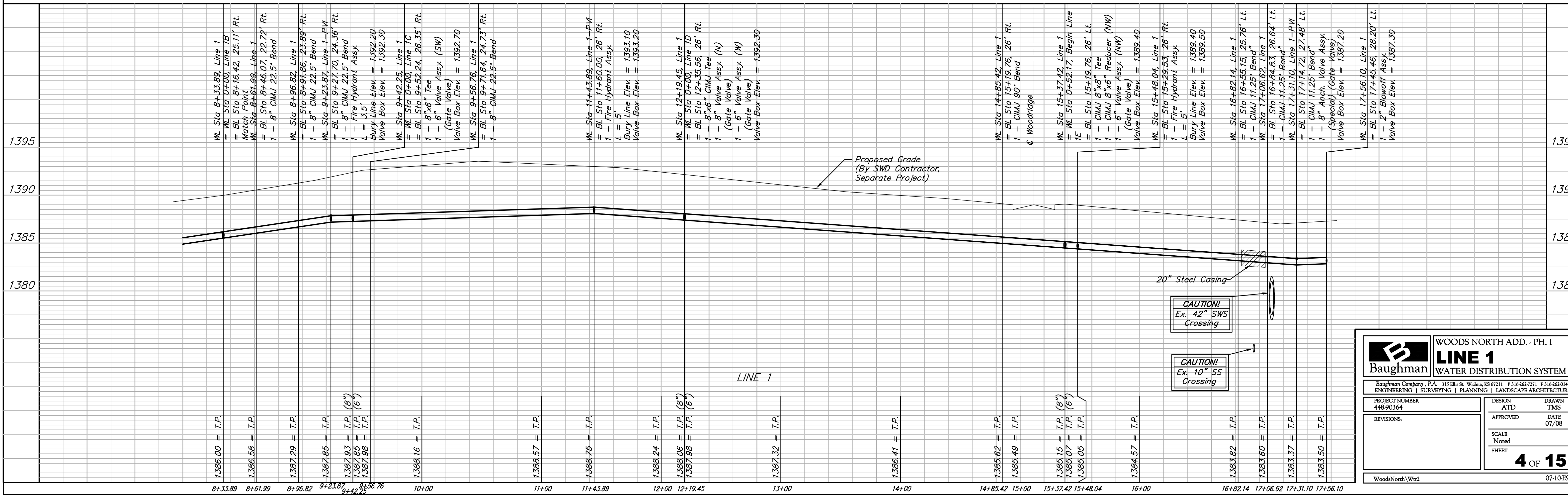
Curve #5  
Curve Data Based on Waterline  
Rad. = 510' Delta = 7° 30' 10" Tangent = 33.44'  
Arc = 66.78' L.C. = 66.74' Def./Ft. = 3.37052 Min.

Station	Arc	CHORD LENGTHS	6" Rt.	Defl.	T. Defl.
9+70.53	-	-	-	0'00"00"	0'00"00"
9+75.00	4.47'	4.52'	4.52'	0'15"04"	0'15"04"
10+00.00	25.00'	25.29'	25.29'	1'39"20"	1'39"20"
10+25.00	25.00'	25.29'	25.29'	3'03"35"	3'03"35"
10+37.31	12.31'	12.46'	12.46'	0'41"29"	3'45"05"

Curve #6  
Curve Data Based on Waterline  
Rad. = 274' Delta = 40° 10' 35" Tangent = 100.21'  
Arc = 192.13' L.C. = 188.22' Def./Ft. = 6.27325 Min.

Station	Arc	CHORD LENGTHS	6" Rt.	Defl.	T. Defl.
12+93.29	-	-	-	0'00"00"	0'00"00"
13+00.00	6.71'	6.56'	6.56'	0'42"05"	0'42"05"
13+25.00	25.00'	24.44'	24.44'	2'36"50"	3'18"55"
13+50.00	25.00'	24.44'	24.44'	2'36"50"	5'55"45"
13+75.00	25.00'	24.44'	24.44'	2'36"50"	8'32"35"
14+00.00	25.00'	24.44'	24.44'	2'36"50"	11'09"25"
14+25.00	25.00'	24.44'	24.44'	2'36"50"	13'46"15"
14+50.00	25.00'	24.44'	24.44'	2'36"50"	16'23"05"
14+69.65	19.65'	19.22'	19.22'	2'03"16"	18'26"21"
14+75.00	5.35'	5.23'	5.23'	0'33"34"	18'59"55"
14+85.42	10.42'	10.19'	10.19'	1'05"23"	20'05"18"

See Sheet 5 for Curve #6A Table



**WOODS NORTH ADD. - PH. I**

**LINE 1**  
WATER DISTRIBUTION SYSTEM

Baughman Engineering, P.A. 315 Ellis St. Wichita, KS 67211 P 316-262-7271 F 316-262-0149  
ENGINEERING | SURVEYING | PLANNING | LANDSCAPE ARCHITECTURE

PROJECT NUMBER 448-90364	DESIGN ATD	DRAWN TMS
REVISIONS:	APPROVED	DATE 07/08
	SCALE Noted	
	SHEET	

4 OF 15

WoodsNorth/Wtr2 07-10-E963