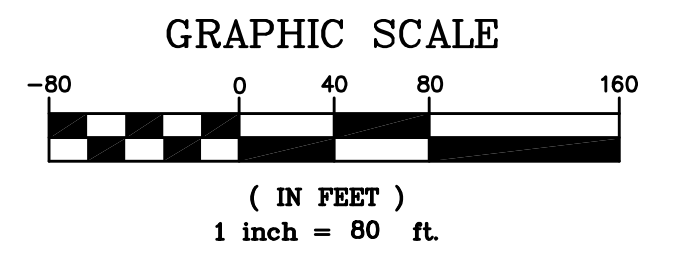
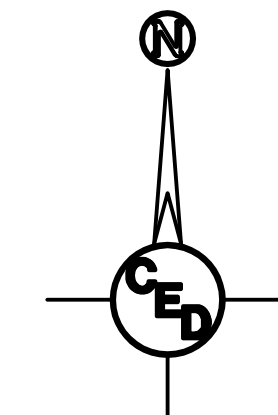


# SITE STAKING & CONTROL PLAN

## 37TH ST. S., YORK ST. & FLORA AVE. PAVING IMPROVEMENTS

### WICHITA, SEDGWICK COUNTY, KANSAS



- = Proposed 5" A.C. Pavement on 5" Crushed Rock Base
- = Proposed Concrete Drives, Valley Gutters, Curb & Gutter, etc.

- UTILITY LEGEND**
- = Catv Box
  - = Guard Post/Bollard
  - = Guy Anchor
  - = Guy Pole
  - = Light Pole
  - = Mailbox
  - = Gas Meter
  - = Power Pole
  - = Sign
  - = San. Sewer Manhole
  - = Storm Sewer Manhole
  - = Telephone Riser
  - = Water Meter
  - = Water Valve
  - = Water Well
  - = Fire Hydrant
  - = Coniferous Tree
  - = Deciduous Tree
  - = Overhead Electric
  - = Gas Line
  - = Water Line

**WATER VALVE TABLE**

VALVE #	SIZE & TYPE	CL STATION	CL OFFSET	OFFSET DIRECTION
14890	6" Gate	10+52.47	19.03'	LEFT
16190	8" Gate	10+44.52	21.20'	LEFT
16191	6" Gate	14+82.08	28.14'	LEFT (Not Field Verified)
20866	16" Butterfly	10+42.36	28.63'	RIGHT
20868	6" Gate	5+13.58	22.20'	LEFT
22984	8" Gate	0+41.99	20.00'	LEFT (Not Field Verified)
22986	8" Gate	14+79.00	34.14'	LEFT
22987	8" Gate	5+03.89	26.68'	LEFT
22988	2" Gate	8+10.47	42.52'	LEFT (Not Field Verified)
23144	8" Gate	4+58.28	21.96'	LEFT (Not Field Verified)
23145	2" Gate	20+50.83	21.84'	LEFT (Not Field Verified)
23203	6" Gate	8+09.10	42.84'	LEFT (Not Field Verified)

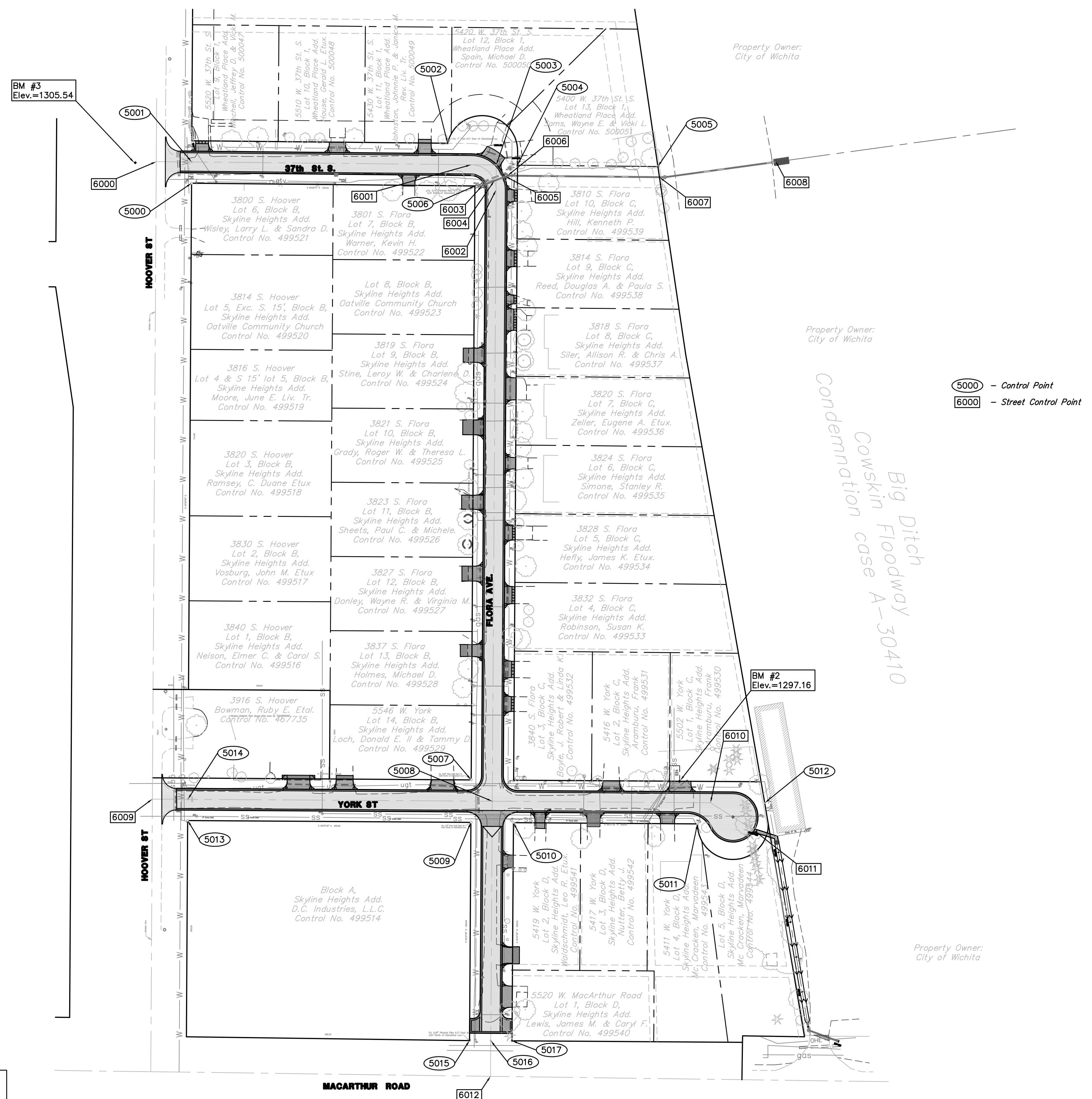
PAVING CONTRACTOR WILL BE RESPONSIBLE TO OPERATE ALL WATER VALVES ON THE PROJECT, IN THE PRESENCE OF THE INSPECTOR, TO ENSURE ACCESSIBILITY TO THE VALVES, AND THAT ALL VALVES ARE LEFT IN THE "ON" POSITION WHEN THE PROJECT IS COMPLETED.

**PROJECT BENCHMARK LIST**

B.M.	Description	Elevation
B.M.	Found Monument on South End of West Bannister of Bridge ±120' North of Ridge and MacArthur.	1299.17
B.M. #1	Set Square Cut on NW Corner of Concrete Pad of Sewer Lift Station, South of MacArthur Road, ± 10' East Gravel Entrance East of Hoover.	1307.85
B.M. #2	Set Square Cut on Concrete Pad at SE Corner of Lift Station located North of York St., West of Cul-de-sac.	1297.16
B.M. #3	Set RR Spike in South Face of Power Pole located 30' West of Hoover in Line with Center of 37th St. South.	1305.54
B.M. #4	Found Monument on West end on Top of South Headwall RCB on MacArthur. Stamped "City of Wichita Benchmark 1299.48".	1299.48

UTILITIES SHOWN REPRESENT THE BEST INFORMATION AVAILABLE FOR DESIGN. ADDITIONAL UTILITIES MAY BE PRESENT ON THIS PROJECT. THE CONTRACTOR SHALL BE RESPONSIBLE FOR DETERMINING THE EXACT LOCATION, DEPTH AND SIZE OF ALL UNDERGROUND UTILITIES PRIOR TO CONSTRUCTION. THE CONTRACTOR SHALL BE LIABLE FOR ANY DAMAGE CAUSED BY THE FAILURE TO DO SO.

**SURVEY DISCLAIMER:**  
TOPOGRAPHIC SURVEY USED IN PREPARING PLANS WAS PROVIDED BY GARBER SURVEYING SERVICE, (620) 665-7032, 423 WEST FIRST AVE., HUTCHINSON, KS. ENGINEER DOES NOT GUARANTEE SURVEY ELEVATIONS FOR ACCURACY. CONTRACTOR SHALL VERIFY ELEVATIONS AND NOTIFY ENGINEER OF ANY DISCREPANCIES.



- Control Point
- Street Control Point

**ONE-CALL TICKET INFORMATION**  
Utilities shown were located by respective owners. Any Utilities not shown are due to no response to Kansas One Call "1-800-DIG-SAFE" Ticket #'s 6495047, 6495048, 7003607, 7039336, 7039339, 7039340.  
  
Utility locations shown hereon are based on information received from Kansas One-Call (1-800-DIG-SAFE) identified by Ticket #'s 6495047, 6495048, 7003607, 7039336, 7039339, 7039340, on December 21, 2006, January 3, 2007 & February 13, 2007. Before any digging, contractor should verify utility locations by calling 1-800-DIG-SAFE.

**CURB & GUTTER STREET IMPROVEMENTS FOR**  
**STAKING CONTROL/SITE PLAN**  
37TH ST. S., YORK ST. & FLORA AVE., WICHITA, KANSAS  
PROJ. NO.: 472 84443

**CERTIFIED ENGINEERING DESIGN, P.A.**

810 WEST DOUGLAS, SUITE C  
WICHITA, KANSAS 67203  
PH.(316)262-8808 FAX.(316)262-1669

DESIGNED: HDF	SCALE: 1"=80'	SHEET
DRAWN: CKW	DATE: 3/07	2
CHECKED: HDF	CED FILE: 37th,Flora,York	TOTAL 34