

EROSION CONTROL PLAN

37TH ST. S., YORK ST. & FLORA AVE. PAVING IMPROVEMENTS

WICHITA, SEDGWICK COUNTY, KANSAS

Subject Area=24.9 Acres
Disturbed Area=±3.9 Acres
Proposed Impervious Area=±2.2 Acres

Contractor shall install erosion control devices under Best Management Practices, BMP's, as shown but not limited to the call-outs on this plan. Contractor will be required to install additional BMP's as required when additional areas begin to erode that are not already mentioned on this plan. (See Erosion Control Sheets 19-23 for more information.)

Contractor shall install "Inlet Protection" at both new curb inlet locations in accordance with the details and notes on sheets 19-23.

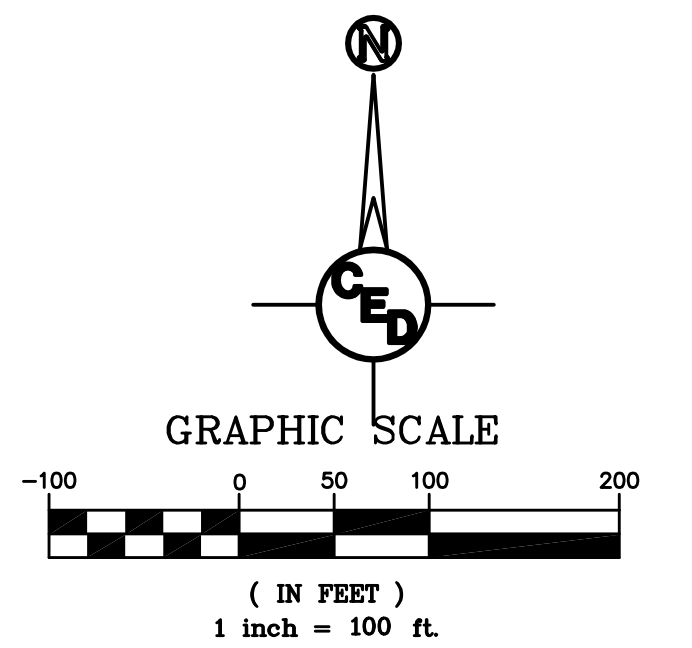
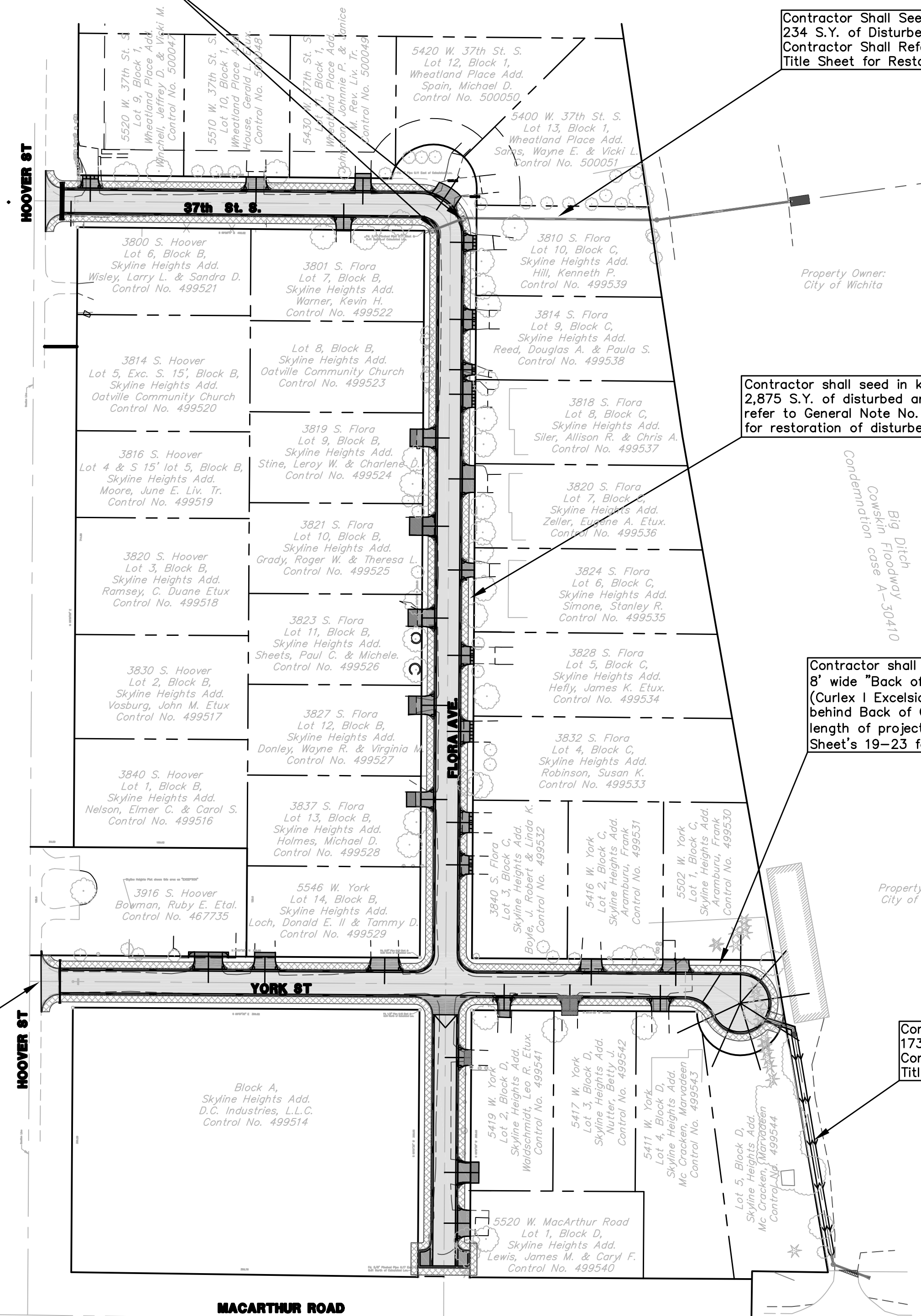
Contractor Shall Seed In Kind Approximately 234 S.Y. of Disturbed Area for SWS Installation. Contractor Shall Refer to General Note No. 22 on Title Sheet for Restoration of Disturbed Grass Areas.

Contractor shall seed in kind approximately 2,875 S.Y. of disturbed areas. Contractor shall refer to General Note No. 22 on Title Sheet for restoration of disturbed grass areas.

Contractor shall install 3,737 S.Y. of 8' wide "Back of Curb Protection" (Curlex 1 Excelsior Erosion Blanket) behind Back of Curb along the length of project. (See BMP Detail Sheet's 19-23 for Details.)

Contractor Shall Seed In Kind Approximately 173 S.Y. of Disturbed Area for SWS Installation. Contractor Shall Refer to General Note No. 22 on Title Sheet for Restoration of Disturbed Grass Areas.

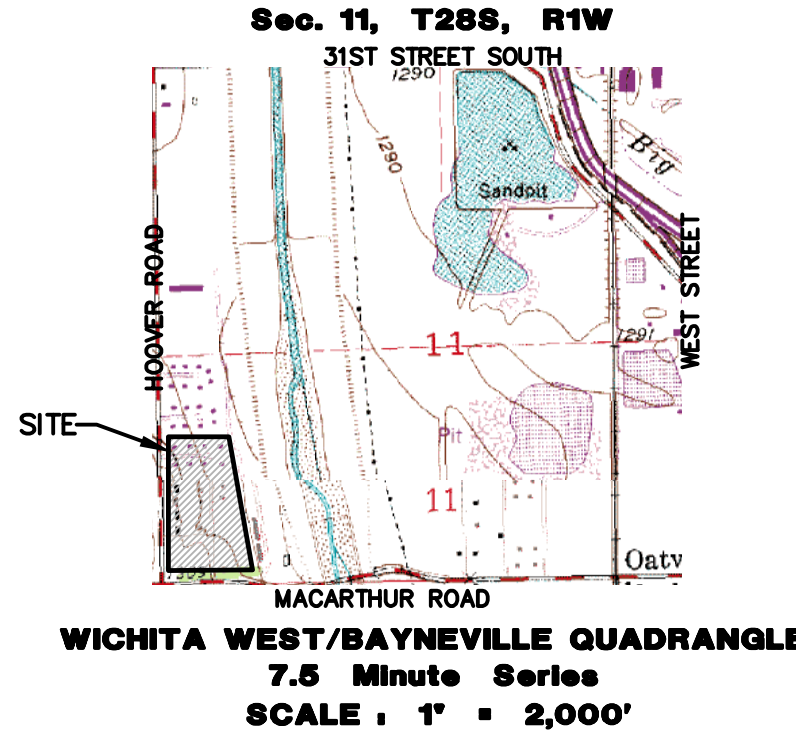
Install Stabilized Construction Entrance(s). (Location and Quantity to be determined by Contractor.)



- = Proposed 5" A.C. Pavement on 5" Crushed Rock Base
- = Proposed Concrete Drives, Valley Gutters, Curb & Gutter, etc.
- = Back of Curb Protection

- #### UTILITY LEGEND
- = Catv Box
 - = Guard Post/Bollard
 - = Guy Anchor
 - = Guy Pole
 - = Light Pole
 - = Mailbox
 - = Gas Meter
 - = Power Pole
 - = Sign
 - = San. Sewer Manhole
 - = Storm Sewer Manhole
 - = Telephone Riser
 - = Water Meter
 - = Water Valve
 - = Water Well
 - = Fire Hydrant
 - = Coniferous Tree
 - = Deciduous Tree
 - = Overhead Electric
 - = Gas Line
 - = Water Line

QUADRANGLE MAP



PROJECT BENCHMARK LIST	
B.M.	Found Monument on South End of West Bannister of Bridge ±120' North of Ridge and MacArthur. Elevation=1299.17
B.M. #4	Found Monument on West end on Top of South Headwall RCB on MacArthur. Stamped "City of Wichita Benchmark 1299.48". Elevation=1299.48

UTILITIES SHOWN REPRESENT THE BEST INFORMATION AVAILABLE FOR DESIGN. ADDITIONAL UTILITIES MAY BE PRESENT ON THIS PROJECT. THE CONTRACTOR SHALL BE RESPONSIBLE FOR DETERMINING THE EXACT LOCATION, DEPTH AND SIZE OF ALL UNDERGROUND UTILITIES PRIOR TO CONSTRUCTION. THE CONTRACTOR SHALL BE LIABLE FOR ANY DAMAGE CAUSED BY THE FAILURE TO DO SO.

SURVEY DISCLAIMER:
TOPOGRAPHIC SURVEY USED IN PREPARING PLANS WAS PROVIDED BY GARBER SURVEYING SERVICE, (620) 665-7032, 423 WEST FIRST AVE., HUTCHINSON, KS. ENGINEER DOES NOT GUARANTEE SURVEY ELEVATIONS FOR ACCURACY. CONTRACTOR SHALL VERIFY ELEVATIONS AND NOTIFY ENGINEER OF ANY DISCREPANCIES.

CURB & GUTTER STREET IMPROVEMENTS FOR

EROSION CONTROL/SITE PLAN

37TH ST. S., YORK ST. & FLORA AVE., WICHITA, KANSAS
PROJ. NO.: 472 84443

CERTIFIED ENGINEERING DESIGN, P.A.

CED

810 WEST DOUGLAS, SUITE C
WICHITA, KANSAS 67203
PH.(316)262-8808 FAX.(316)262-1669

DESIGNED: HDF
DRAWN: CKW
CHECKED: HDF

SCALE: 1"=100'
DATE: 3/07
CED FILE: 37th,Flora,York

SHEET
3
TOTAL 34