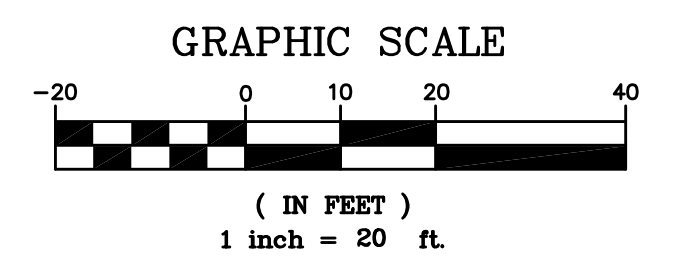
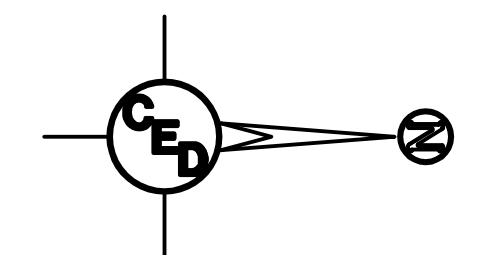


UTILITIES SHOWN REPRESENT THE BEST INFORMATION AVAILABLE FOR DESIGN. ADDITIONAL UTILITIES MAY BE PRESENT ON THIS PROJECT. THE CONTRACTOR SHALL BE RESPONSIBLE FOR DETERMINING THE EXACT LOCATION, DEPTH AND SIZE OF ALL UNDERGROUND UTILITIES PRIOR TO CONSTRUCTION. THE CONTRACTOR SHALL BE LIABLE FOR ANY DAMAGE CAUSED BY THE FAILURE TO DO SO.

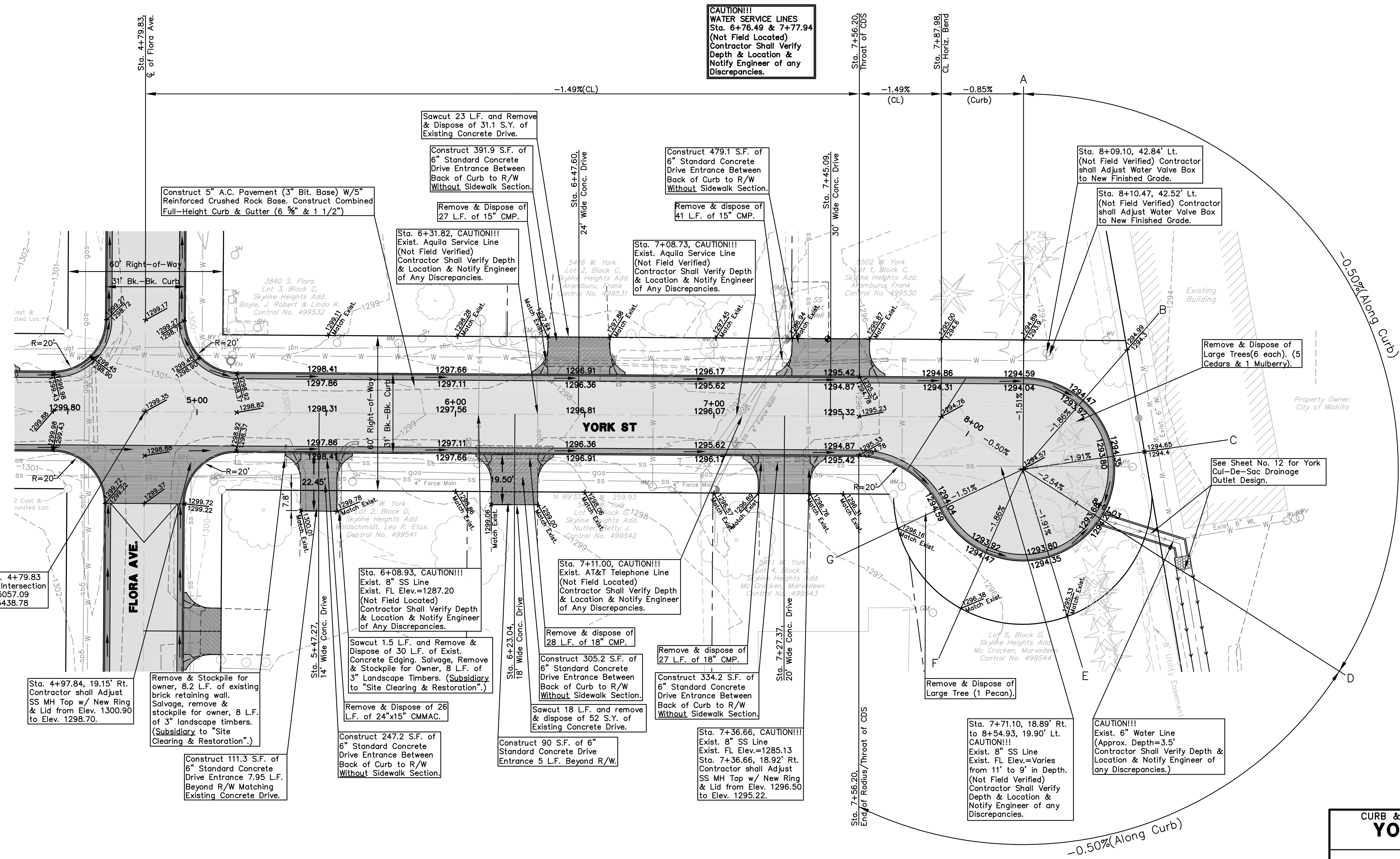
SURVEY DISCLAIMER:
TOPOGRAPHIC SURVEY USED IN PREPARING PLANS WAS PROVIDED BY GARBER SURVEYING SERVICE, (620) 665-7032, 423 WEST FIRST AVE., HUTCHINSON, KS. ENGINEER DOES NOT GUARANTEE SURVEY ELEVATIONS FOR ACCURACY. CONTRACTOR SHALL VERIFY ELEVATIONS AND NOTIFY ENGINEER OF ANY DISCREPANCIES.

Landscaping Removal Note: The Contractor shall exercise care in removing existing landscaping material within the R/W. All material required for removal shall be salvaged and stockpiled for the owner. This includes timbers, posts, rocks, stones, fencing, etc.. Landscaping material not within R/W limits damaged by contractor shall be replaced at contractor's expense. (Subsidiary to "Site Clearing & Restoration".)



- = Proposed 5" A.C. Pavement on 5" Crushed Rock Base
- = Proposed Concrete Drives, Valley Gutters, Curb & Gutter, etc.
- = Concrete Removed

- UTILITY LEGEND**
- = Catv Box
 - = Guard Post/Bollard
 - = Guy Anchor
 - = Guy Pole
 - = Light Pole
 - = Mailbox
 - = Gas Meter
 - = Power Pole
 - = Sign
 - = San. Sewer Manhole
 - = Storm Sewer Manhole
 - = Telephone Riser
 - = Sprinkler Head
 - = Water Meter
 - = Water Valve
 - = Water Well
 - = Fire Hydrant
 - = Coniferous Tree
 - = Deciduous Tree
 - = Overhead Electric
 - = Gas Line
 - = Water Line
 - = Underground Telephone



CAUTION!!!
WATER SERVICE LINES
Sta. 6+76.49 & 7+77.94
(Not Field Located)
Contractor Shall Verify
Depth & Location &
Notify Engineer of any
Discrepancies.

Sawcut 23 L.F. and Remove
& Dispose of 31.1 S.Y. of
Existing Concrete Drive.

Construct 5" A.C. Pavement (3" Bit. Base) W/5"
Reinforced Crushed Rock Base. Construct Combined
Full-Height Curb & Gutter (6 3/8" & 1 1/2")

Construct 479.1 S.F. of
6" Standard Concrete
Drive Entrance Between
Back of Curb to R/W
Without Sidewalk Section.

Remove & Dispose of
27 L.F. of 15" CMP.

Remove & dispose of
41 L.F. of 15" CMP.

Sta. 6+31.82, CAUTION!!!
Exist. Aquia Service Line
(Not Field Verified)
Contractor Shall Verify Depth
& Location & Notify Engineer
of Any Discrepancies.

Sta. 6+08.93, CAUTION!!!
Exist. 8" SS Line
Exist. FL Elev.=1287.20
(Not Field Located)
Contractor Shall Verify Depth
& Location & Notify Engineer
of Any Discrepancies.

Sta. 7+11.00, CAUTION!!!
Exist. AT&T Telephone Line
(Not Field Located)
Contractor Shall Verify Depth
& Location & Notify Engineer
of Any Discrepancies.

Remove & dispose of
28 L.F. of 18" CMP.

Remove & dispose of
27 L.F. of 18" CMP.

Construct 334.2 S.F. of
6" Standard Concrete
Drive Entrance Between
Back of Curb to R/W
Without Sidewalk Section.

Sta. 7+36.66, CAUTION!!!
Exist. 8" SS Line
Exist. FL Elev.=1285.13
Sta. 7+36.66, 18.92' Rt.
Contractor shall Adjust
SS MH Top w/ New Ring
& Lid from Elev. 1296.50
to Elev. 1295.22.

Sta. 8+09.10, 42.84' Lt.
(Not Field Verified) Contractor
shall Adjust Water Valve Box
to New Finished Grade.

Sta. 8+10.47, 42.52' Lt.
(Not Field Verified) Contractor
shall Adjust Water Valve Box
to New Finished Grade.

Remove & Dispose of
Large Trees(6 each). (5
Cedars & 1 Mulberry).

See Sheet No. 12 for York
Cul-De-Sac Drainage
Outlet Design.

Remove & Dispose of
Large Tree (1 Pecan).

CAUTION!!!
Exist. 6" Water Line
(Approx. Depth=3.5')
Contractor Shall Verify Depth &
Location & Notify Engineer of
any Discrepancies.

Sta. 4+79.83
CL Intersection
N 5057.09
E 5438.78

Sta. 4+97.84, 19.15' Rt.
Contractor shall Adjust
SS MH Top w/ New Ring
& Lid from Elev. 1300.90
to Elev. 1298.70.

Remove & Stockpile for
owner, 8.2 L.F. of existing
brick retaining wall.
Salvage, remove &
stockpile for owner, 8 L.F.
of 3" landscape timbers.
(Subsidiary to "Site
Clearing & Restoration".)

Construct 111.3 S.F. of
6" Standard Concrete
Drive Entrance Between
Back of Curb to R/W
Beyond R/W Matching
Existing Concrete Drive.

Remove & Dispose of 26
L.F. of 24"x15" CMMAC.

Construct 247.2 S.F. of
6" Standard Concrete
Drive Entrance Between
Back of Curb to R/W
Without Sidewalk Section.

Construct 90 S.F. of 6"
Standard Concrete Drive
Entrance 5 L.F. Beyond R/W.

**CURB & GUTTER STREET IMPROVEMENTS FOR
YORK STREET PLAN
WICHITA, KANSAS**

PROJ. NO.: 472 84443

CERTIFIED ENGINEERING DESIGN, P.A.

810 WEST DOUGLAS, SUITE C
WICHITA, KANSAS 67203
PH.(316)262-8808 FAX.(316)262-1669

DESIGNED: HDF	SCALE: 1"=20'	SHEET
DRAWN: CKW	DATE: 2/07	6
CHECKED: HDF	GED FILE: 37thFlora, York-Base	TOTAL 34