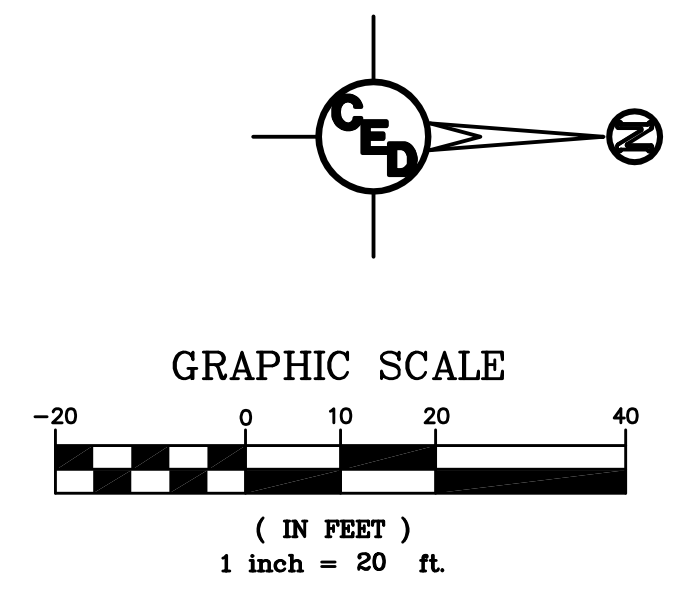


UTILITIES SHOWN REPRESENT THE BEST INFORMATION AVAILABLE FOR DESIGN. ADDITIONAL UTILITIES MAY BE PRESENT ON THIS PROJECT. THE CONTRACTOR SHALL BE RESPONSIBLE FOR DETERMINING THE EXACT LOCATION, DEPTH AND SIZE OF ALL UNDERGROUND UTILITIES PRIOR TO CONSTRUCTION. THE CONTRACTOR SHALL BE LIABLE FOR ANY DAMAGE CAUSED BY THE FAILURE TO DO SO.

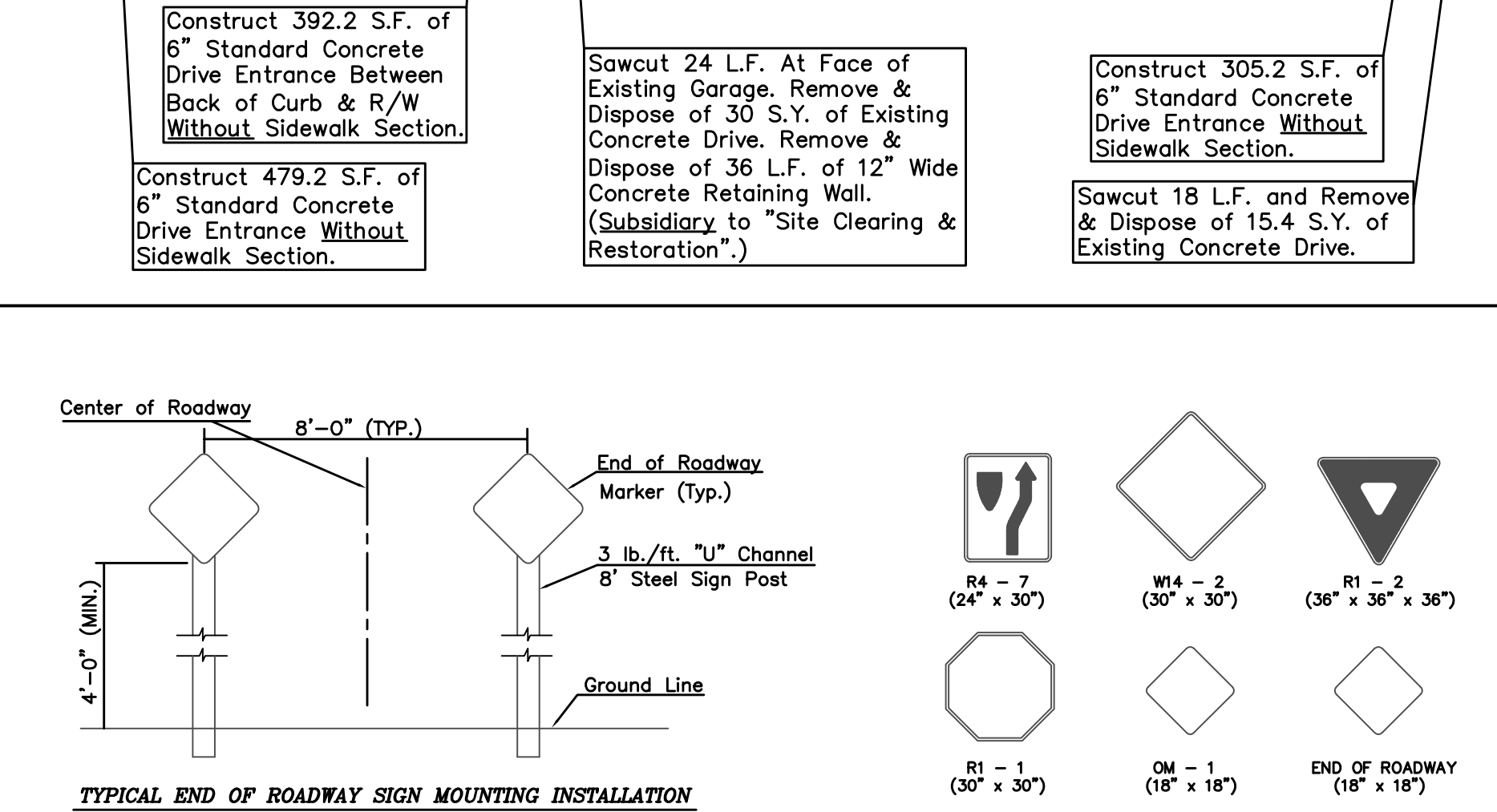
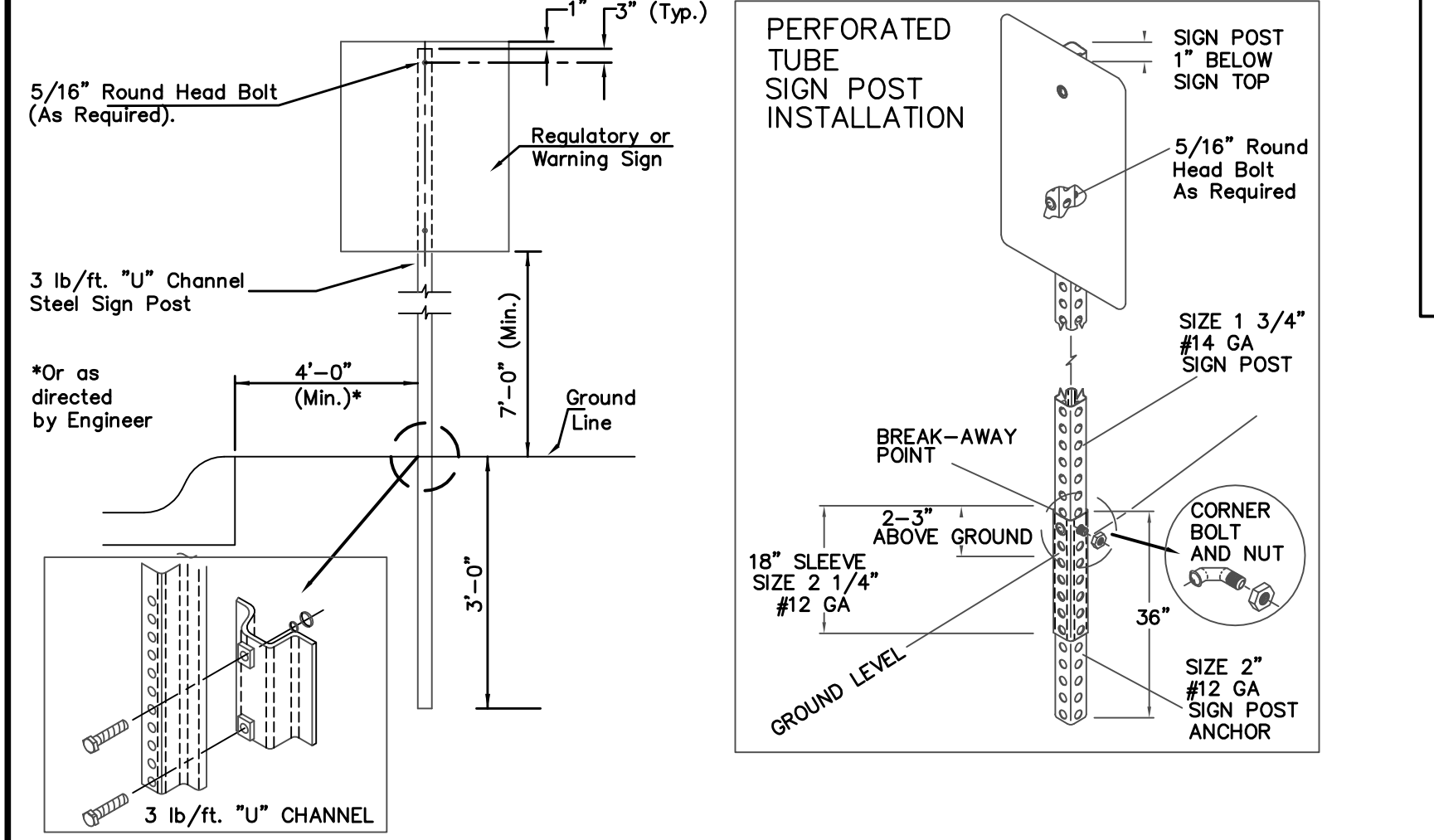
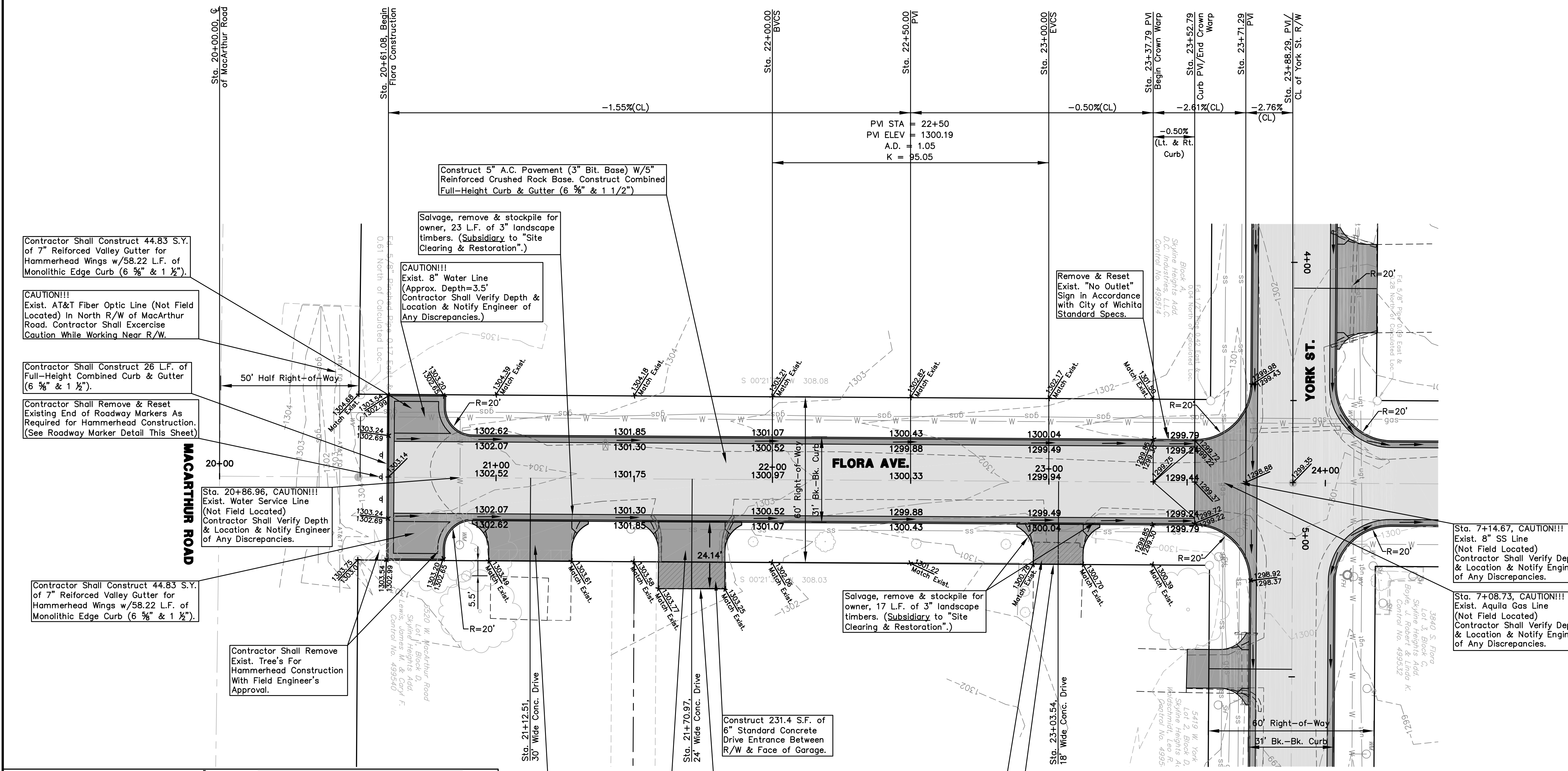
SURVEY DISCLAIMER:
TOPOGRAPHIC SURVEY USED IN PREPARING PLANS WAS PROVIDED BY GARBER SURVEYING SERVICE, (620) 665-7032, 423 WEST FIRST AVE., HUTCHINSON, KS. ENGINEER DOES NOT GUARANTEE SURVEY ELEVATIONS FOR ACCURACY. CONTRACTOR SHALL VERIFY ELEVATIONS AND NOTIFY ENGINEER OF ANY DISCREPANCIES.

Landscaping Removal Note: The Contractor shall exercise care in removing existing landscaping material within the R/W. All material required for removal shall be salvaged and stockpiled for the owner. This includes timbers, posts, rocks, stones, fencing, etc.. Landscaping material not within R/W limits damaged by contractor shall be replaced at contractor's expense.
(Subsidiary to "Site Clearing & Restoration".)



- = Proposed 5" A.C. Pavement on 5" Crushed Rock Base
- = Proposed Concrete Drives, Valley Gutters, Curb & Gutter, etc.
- = Concrete Removed

- UTILITY LEGEND**
- = Catv Box
 - = Guard Post/Bollard
 - = Guy Anchor
 - = Guy Pole
 - = Light Pole
 - = Mailbox
 - = Gas Meter
 - = Power Pole
 - = Sign
 - = San. Sewer Manhole
 - = Storm Sewer Manhole
 - = Telephone Riser
 - = Sprinkler Head
 - = Water Meter
 - = Water Valve
 - = Water Well
 - = Fire Hydrant
 - = Coniferous Tree
 - = Deciduous Tree
 - = Overhead Electric
 - = Gas Line
 - = Water Line
 - = Underground Telephone



**CURB & GUTTER STREET IMPROVEMENTS FOR
FLORA STREET PLAN**
WICHITA, KANSAS
PROJ. NO.: 472 84443

CERTIFIED ENGINEERING DESIGN, P.A.
810 WEST DOUGLAS, SUITE C
WICHITA, KANSAS 67203
PH.(316)262-8808 FAX.(316)262-1669

DESIGNED: HDF	SCALE: 1"=20'	SHEET
DRAWN: CKW	DATE: 2/07	8
CHECKED: HDF	GED FILE: 37thFlora, York-Base	TOTAL 34

TYPICAL TRAFFIC CONTROL SIGN MOUNTING INSTALLATION

TYPICAL END OF ROADWAY SIGN MOUNTING INSTALLATION