

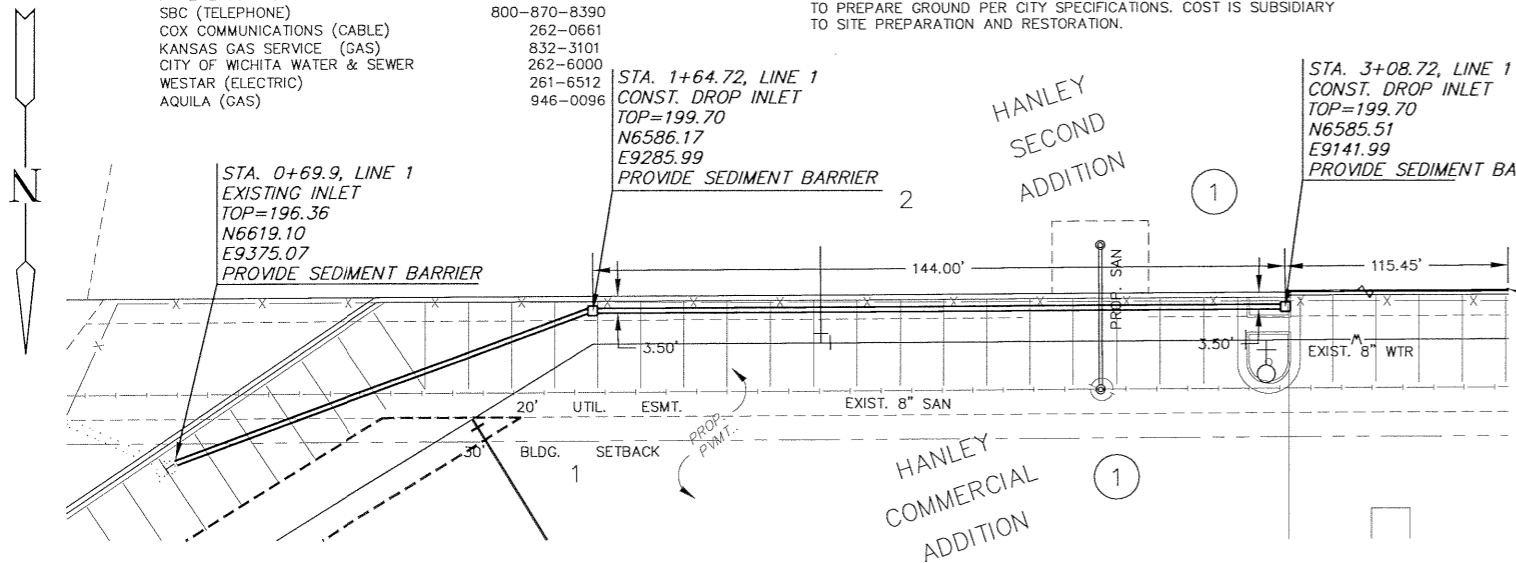
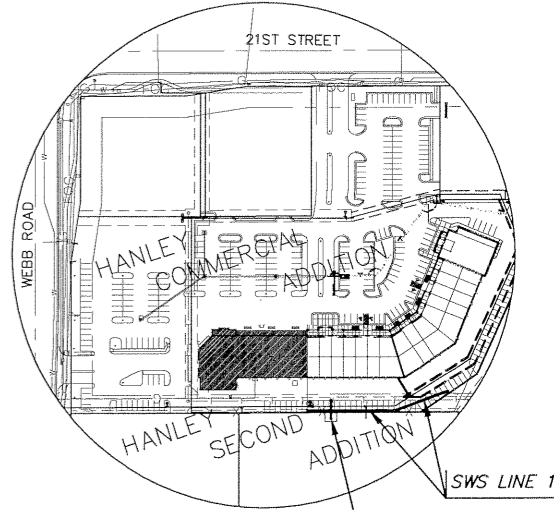
GENERAL NOTES

- UNLESS SHOWN OR STATED OTHERWISE ON THESE DRAWINGS, MATERIALS AND CONSTRUCTION SHALL BE IN ACCORDANCE WITH CITY OF WICHITA STANDARD SPECIFICATIONS.
- CONTRACTOR WILL BE REQUIRED TO PROVIDE A MINIMUM ADVANCE NOTICE OF SEVENTY-TWO (72) HOURS TO UTILITY COMPANIES PRIOR TO STARTING ANY EXCAVATION AS FOLLOWS:
KANSAS ONE-CALL 1-800-344-7233
or 687-2470 (LOCAL WICHITA)
- EXISTING UTILITIES AND THEIR LOCATIONS, AS SHOWN ON THE PLANS REPRESENT THE BEST INFORMATION OBTAINABLE FOR DESIGN. LOCATION INFORMATION HAS BEEN OBTAINED FROM THE VARIOUS UTILITY COMPANIES AND IS EITHER FROM COMPANY RECORD DRAWINGS OR COMPANY PROVIDED FIELD LOCATIONS. THE PLAN LOCATIONS SHOWN ARE NOT GUARANTEED. ADDITIONAL EXISTING UTILITIES MAY ALSO BE ENCOUNTERED.
- ALL STUBS AND PLUGGED PIPES SHALL BE LOCATED WITH GREEN PLASTIC TAPE IN THE SAME MANNER AS RISERS.
- ALL DISTURBED AREAS TO BE SEEDDED WITH RYE GRASS AT A RATE OF 200 LBS. PER ACRE WITHIN 10 DAYS OF CONSTRUCTION. CONTRACTOR TO PREPARE GROUND PER CITY SPECIFICATIONS. COST IS SUBSIDIARY TO SITE PREPARATION AND RESTORATION.

THE CONTRACTOR MUST NOTIFY THE FOLLOWING IN CASE OF AN EMERGENCY:

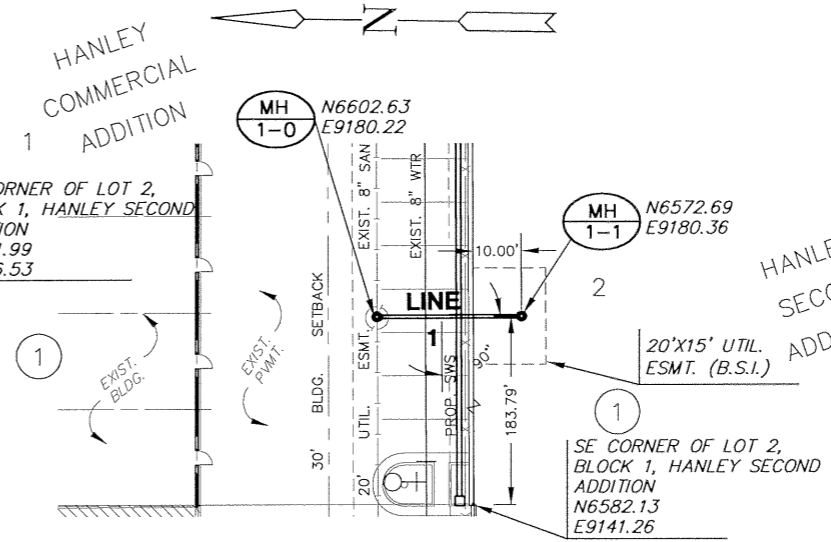
SBC (TELEPHONE)	800-870-8390
COX COMMUNICATIONS (CABLE)	262-0661
KANSAS GAS SERVICE (GAS)	832-3101
CITY OF WICHITA WATER & SEWER	262-6000
WESTAR (ELECTRIC)	261-6512
AQUILA (GAS)	946-0096

Mies Construction, Inc. - Contractor
 JTC - Inspector
 SS Released 8/15/08
 As-Built
 JDL 8/18/08
 Note: No TV tape submitted on this project



PLAN - SWS LINE 1

HORIZONTAL SCALE: 1" = 20'

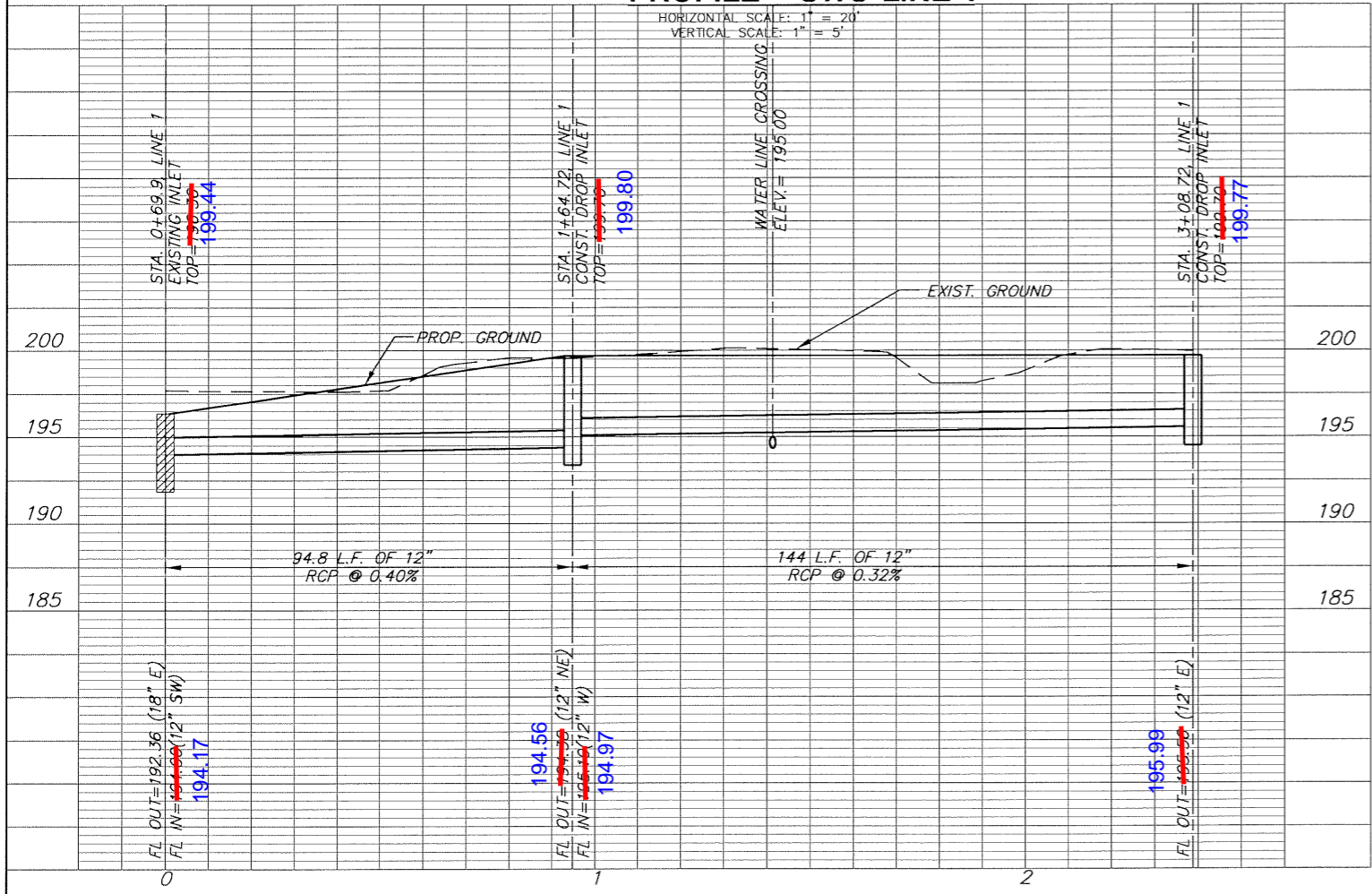


PLAN - SAN LINE 1

HORIZONTAL SCALE: 1" = 20'

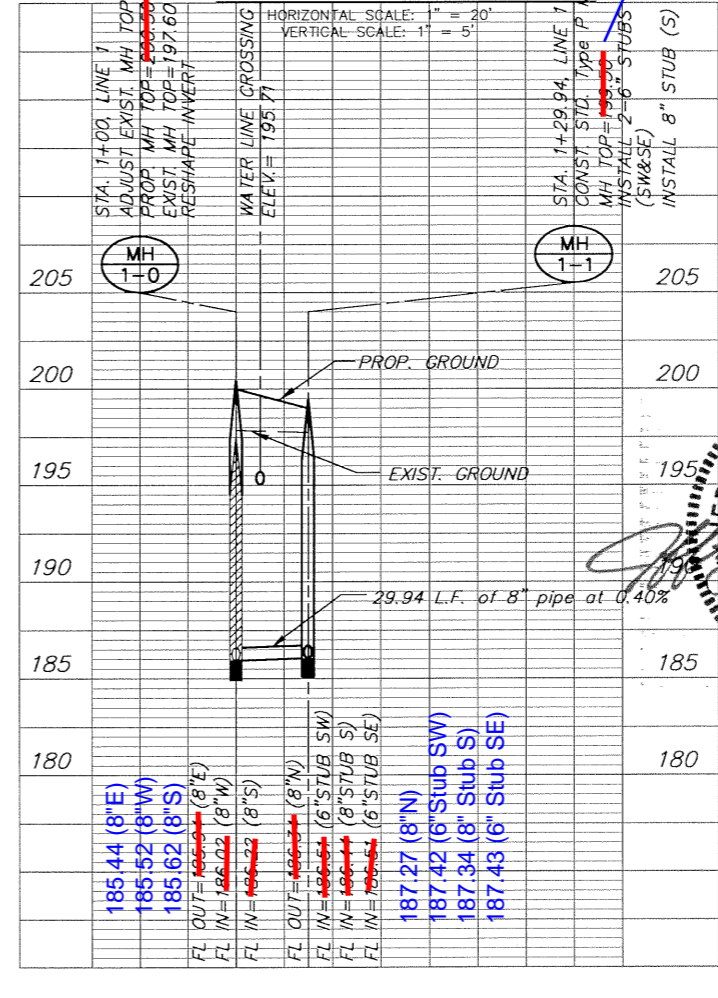
PROFILE - SWS LINE 1

HORIZONTAL SCALE: 1" = 20'
 VERTICAL SCALE: 1" = 5'



PROFILE - SAN LINE 1

HORIZONTAL SCALE: 1" = 20'
 VERTICAL SCALE: 1" = 5'



APPROVED AS NOTED
 BY CITY ENGINEER OF WICHITA

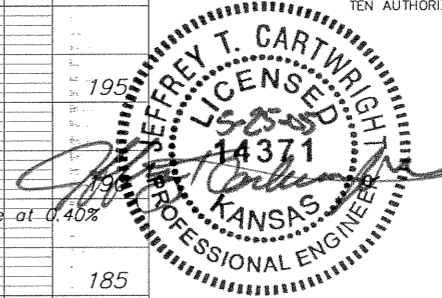
SANITARY SEWER *VRH 6/2/05*
 STORM WATER SEWER *VRH 6/2/05*

NOTE TO CONTRACTOR

INSPECTION AND TESTING FOR THIS PROJECT IS TO BE PROVIDED BY A LICENSED CONSULTING ENGINEERING FIRM UNDER CONTRACT WITH THE OWNER/DEVELOPER. SAID INSPECTION TO BE IN ACCORDANCE WITH THE CITY OF WICHITA STANDARD CONSTRUCTION ENGINEERING PRACTICES AND CERTIFIED BY A LICENSED PROFESSIONAL ENGINEER. NO WORK SHALL BE PERFORMED IN DEDICATED EASEMENTS OR THE PUBLIC RIGHT-OF-WAY BY THE CONTRACTOR WITHOUT SUCH INSPECTION NOR SHALL ANY WORK BE COMMENCED IN DEDICATED EASEMENTS OR PUBLIC RIGHT-OF-WAY WITHOUT WRITTEN AUTHORIZATION BY THE CITY ENGINEER.

BENCHMARK

- BM#1 1" CUT TOP OF CURB, EAST SIDE OF WEBB RD. ±115' SOUTH OF THE CENTERLINE OF 21ST STREET NORTH. ELEV. = 202.85
- BM#2 1" CUT TOP OF CURB, NORTHEAST CORNER OF REINFORCED CONCRETE BOX HEADWALL 65' SOUTH AND 50' EAST 21ST STREET NORTH WEBB RD. ELEV. = 198.02



MKEC
 ENGINEERING CONSULTANTS
 411 N. WEBB ROAD
 WICHITA, KS. 67206
 316-684-9600

LOT 2, BLOCK 1 HANLEY SECOND ADD.
1530PPS (607861)
 PROJECT NAME
PRIVATE SANITARY AND STORM WATER SEWER
 SHEET TITLE

JTC	BFL	JTC
DESIGN BY:	DRAWN BY:	CHECKED BY:
APRIL 2005	01168_B1	1 / 1
DATE	DRAWING NAME	SHEET / OF