

PLAN AND PROFILE OF PROPOSED

11918-11924 JENNIE STREET STORM SEWER IMPROVEMENTS

CITY OF WICHITA
SEDGWICK COUNTY, KANSAS

OCA 660499

JIM ARMOUR, P.E. - CITY ENGINEER

468-84533

GENERAL NOTES

CONTRACTOR WILL BE REQUIRED TO PROVIDE A MINIMUM ADVANCE NOTICE OF SEVENTY-TWO (72) HOURS TO UTILITY COMPANIES PRIOR TO STARTING ANY EXCAVATION AS FOLLOWS:

KANSAS ONE-CALL 1-800-344-7233
OR 687-2470 (LOCAL WICHITA)

THE CONTRACTOR MUST NOTIFY THE FOLLOWING IN CASE OF AN EMERGENCY:

SBC (TELEPHONE)	800-870-8390
COX COMMUNICATIONS (CABLE)	(316) 262-0661
WESTAR (ELECTRIC)	(316) 261-6512
KANSAS GAS SERVICE (GAS)	(316) 832-3101
CITY OF WICHITA WATER & SEWER MAINT.	(316) 262-6000
AQUILA (GAS)	(316) 946-0096
PHILLIPS PIPELINE COMPANY	(316) 655-6845
QUEST PIPELINE COMPANY	(913)-522-2544

THE CONTRACTOR SHALL BE RESPONSIBLE FOR PRESERVING PROPERTY IRONS. THE CONTRACTOR WILL BE REQUIRED TO RE-ESTABLISH ANY PROPERTY IRONS WHICH ARE DAMAGED OR DESTROYED BY HIS CONSTRUCTION OPERATIONS. SUCH IRONS SHALL BE RE-ESTABLISHED BY A LICENSED LAND SURVEYOR IN ACCORDANCE WITH STATE LAWS.

EXISTING UTILITIES AND THEIR LOCATIONS, AS SHOWN ON THE PLANS REPRESENT THE BEST INFORMATION OBTAINABLE FOR DESIGN. LOCATION INFORMATION HAS BEEN OBTAINED FROM THE VARIOUS UTILITY COMPANIES AND IS EITHER FROM COMPANY RECORD DRAWINGS OR COMPANY PROVIDED FIELD LOCATIONS. THE PLAN LOCATIONS SHOWN ARE NOT GUARANTEED. ADDITIONAL EXISTING UTILITIES MAY ALSO BE ENCOUNTERED.

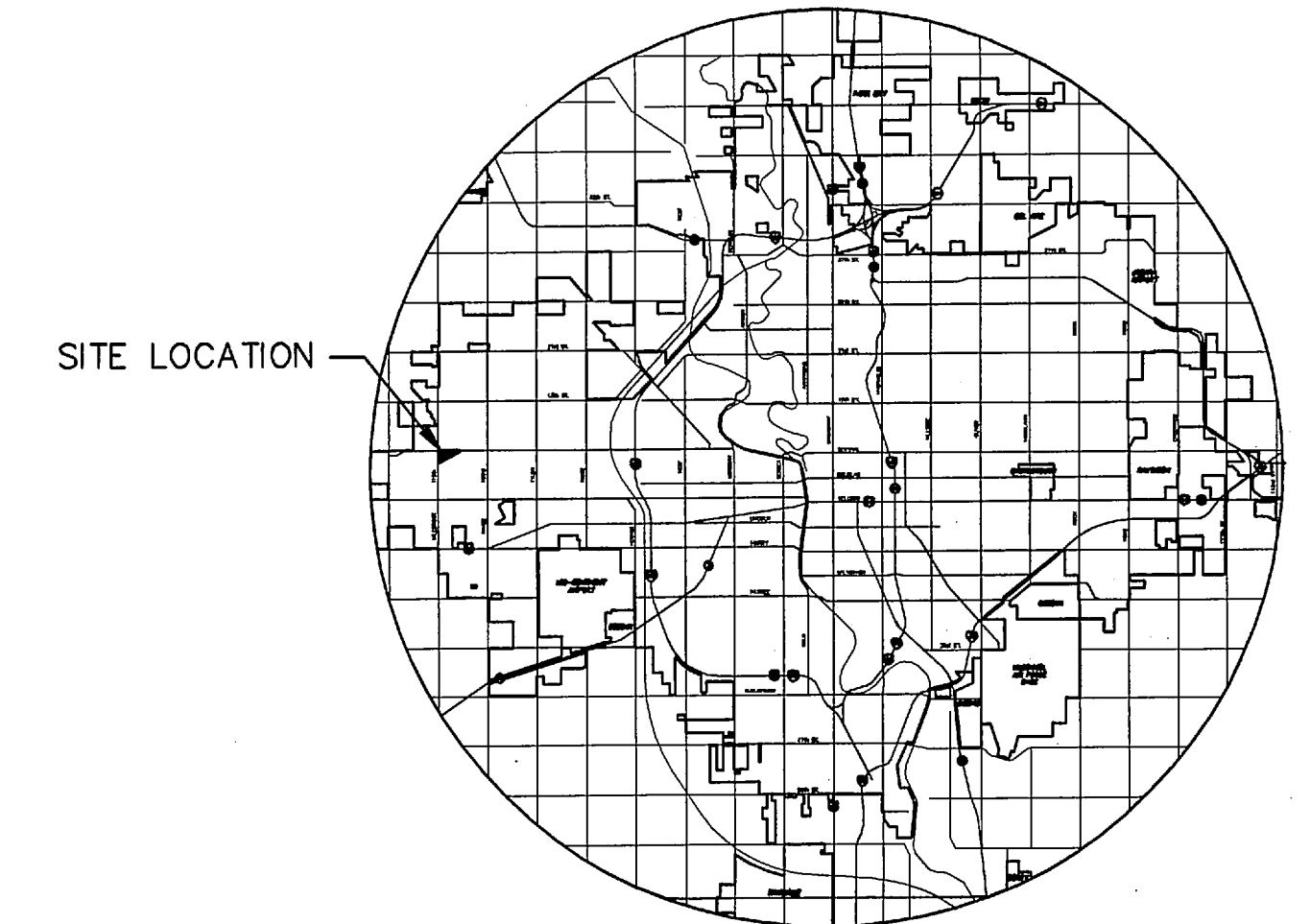
RUBBLE FROM THE REMOVAL OF MISCELLANEOUS STRUCTURES AND EXCESS EXCAVATION WHICH IS TO BE WASTED SHALL BE DISPOSED OF ON SITES TO BE PROVIDED BY THE CONTRACTOR. THESE SITES SHALL BE APPROVED BY THE ENGINEER AS TO SUITABILITY, APPEARANCE AND SITE LOCATION. LOCATIONS THAT, IN THE OPINION OF THE ENGINEER, WILL LEAVE AN UNSIGHTLY APPEARANCE WILL NOT BE APPROVED. ALL DISPOSAL SITES MUST BE APPROVED BY THE KANSAS DEPARTMENT OF HEALTH AND ENVIRONMENT. MATERIAL EITHER STOCKPILED OR DISPOSED OF IN A FLOOD PLAIN WOULD REQUIRE A KANSAS STATE BOARD OF AGRICULTURE PERMIT. ANY MATERIAL DUMPED IN WATERS OF THE UNITED STATES OR WETLANDS IS SUBJECT TO U.S. CORPS OF ENGINEERS PERMITTING REGULATIONS. ANY MATERIAL BURIED OR STOCKPILED BEYOND APPROVED CONSTRUCTION LIMITS WOULD REQUIRE ADDITIONAL ARCHAEOLOGICAL INVESTIGATIONS UNLESS BURIED IN A PREVIOUSLY APPROVED BORROW LOCATION.

CONTRACTOR SHALL RESEED AND MULCH ALL DISTURBED AREAS. STRAW BALE BARRIERS FOR AREA INLETS SHALL BE PLACED AT EACH INLET (SEE DETAIL SHEET 5 OF 5). COST FOR SEEDING, MULCHING, AND EROSION CONTROL BMPs SHALL BE CONSIDERED SUBSIDIARY TO SITE RESTORATION.

CONNECTION OF PROPOSED STORM SEWER CONDUITS TO EXISTING STORM SEWER INLET SHALL INCLUDE ALL MATERIAL, EQUIPMENT AND LABOR. THESE CONNECTIONS SHALL NOT BE PAID FOR DIRECTLY, BUT SHALL BE CONSIDERED SUBSIDIARY TO THE VARIOUS PROPOSED CONDUITS OR STRUCTURES. THIS WORK SHALL BE AS DIRECTED BY THE ENGINEER AND SHALL BE SUBSIDIARY TO THE SPECIFIC STRUCTURE BID ITEMS.

ELEVATIONS ARE IN CITY OF WICHITA DATUM.

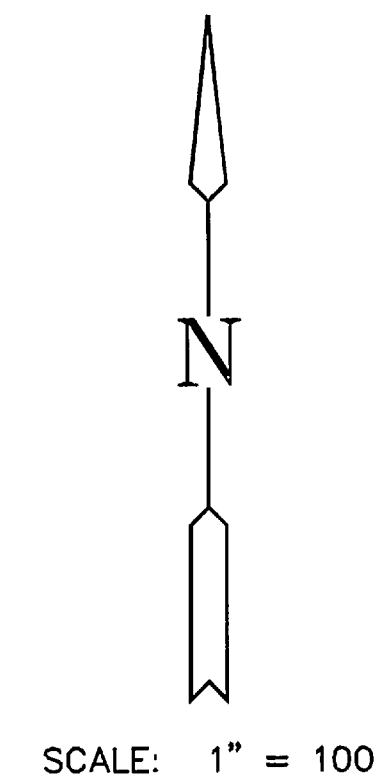
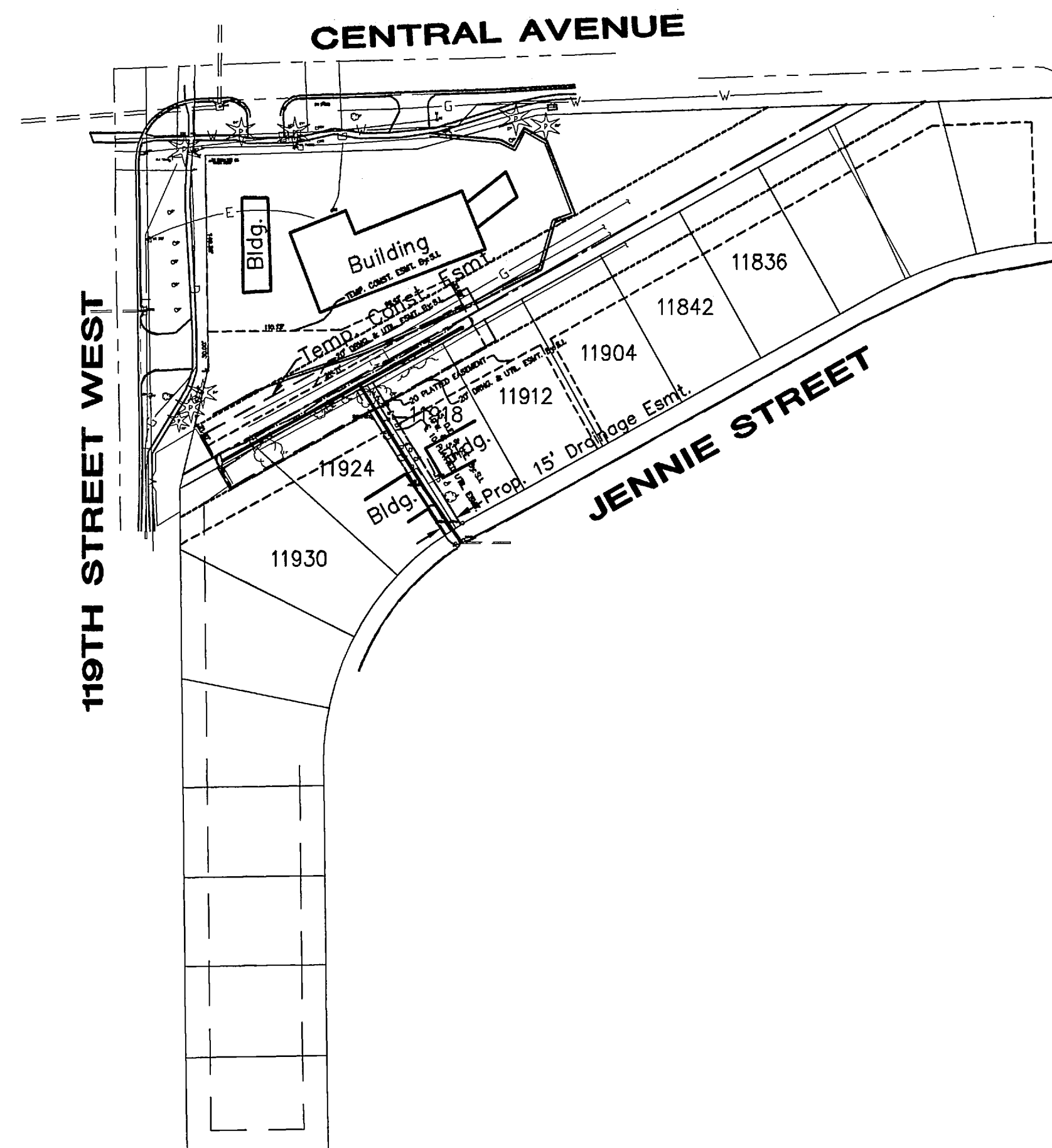
ACCESS EASEMENT TO BE NEGOTIATED WITH PROPERTY OWNERS NORTH OF CONSTRUCTION EASEMENT.



LOCATION MAP

INDEX TO DRAWINGS

SHEET NO.	DESCRIPTION
1	TITLE SHEET
2	PROJECT AERIAL MAP
3	STORM SEWER PLAN AND PROFILE
4	DETAIL SHEET
5	EROSION CONTROL SHEET



SCALE: 1" = 100'

J:\Civil\04510\dwg\SWS\04510TTL.DWG 7/15/2008 10:59 AM



**11918-11924 JENNIE STREET
STORM SEWER IMPROVEMENTS**
PROJECT NAME

TITLE SHEET
SHEET TITLE

TM DESIGN BY.	DPG DRAWN BY.	TM CHECKED BY.
JULY 2008 DATE	04510 JOB NO.	1 / 5 SHEET/OF