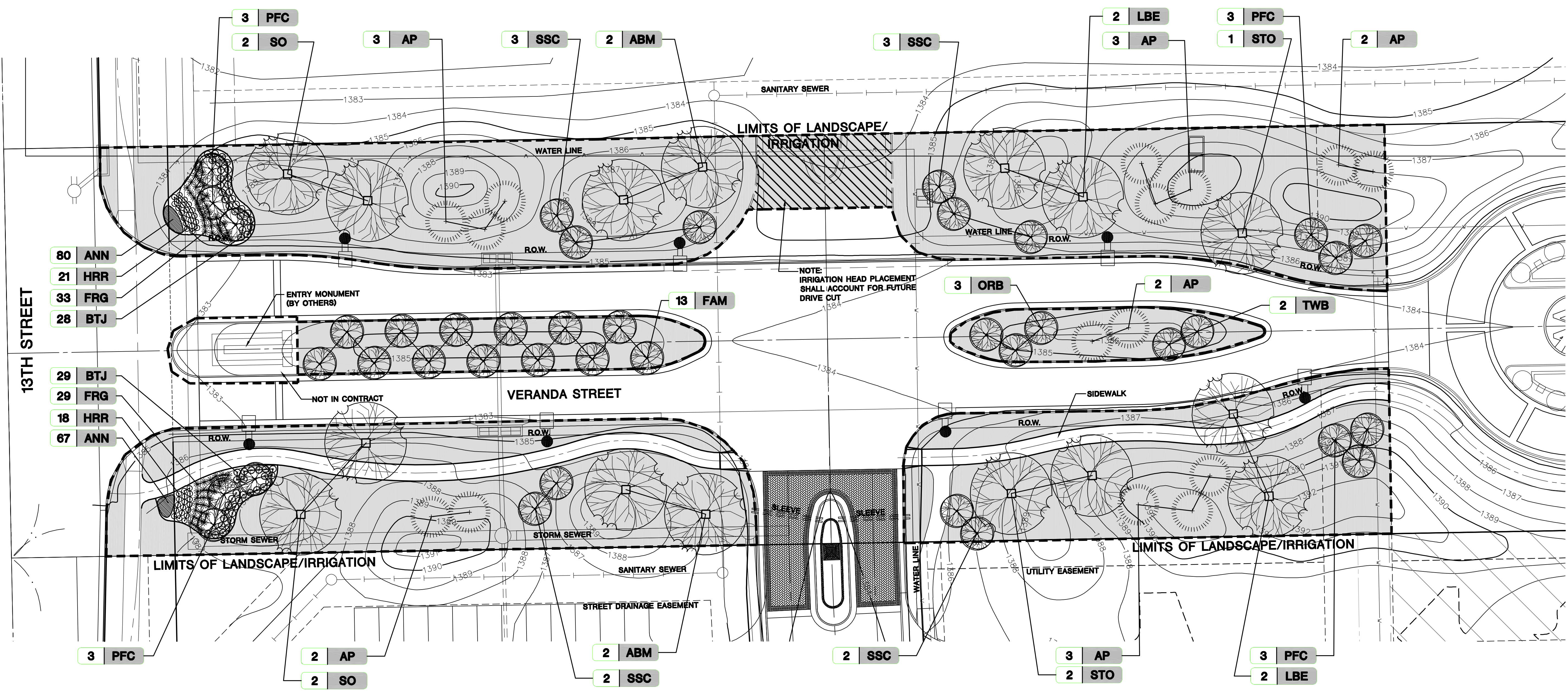
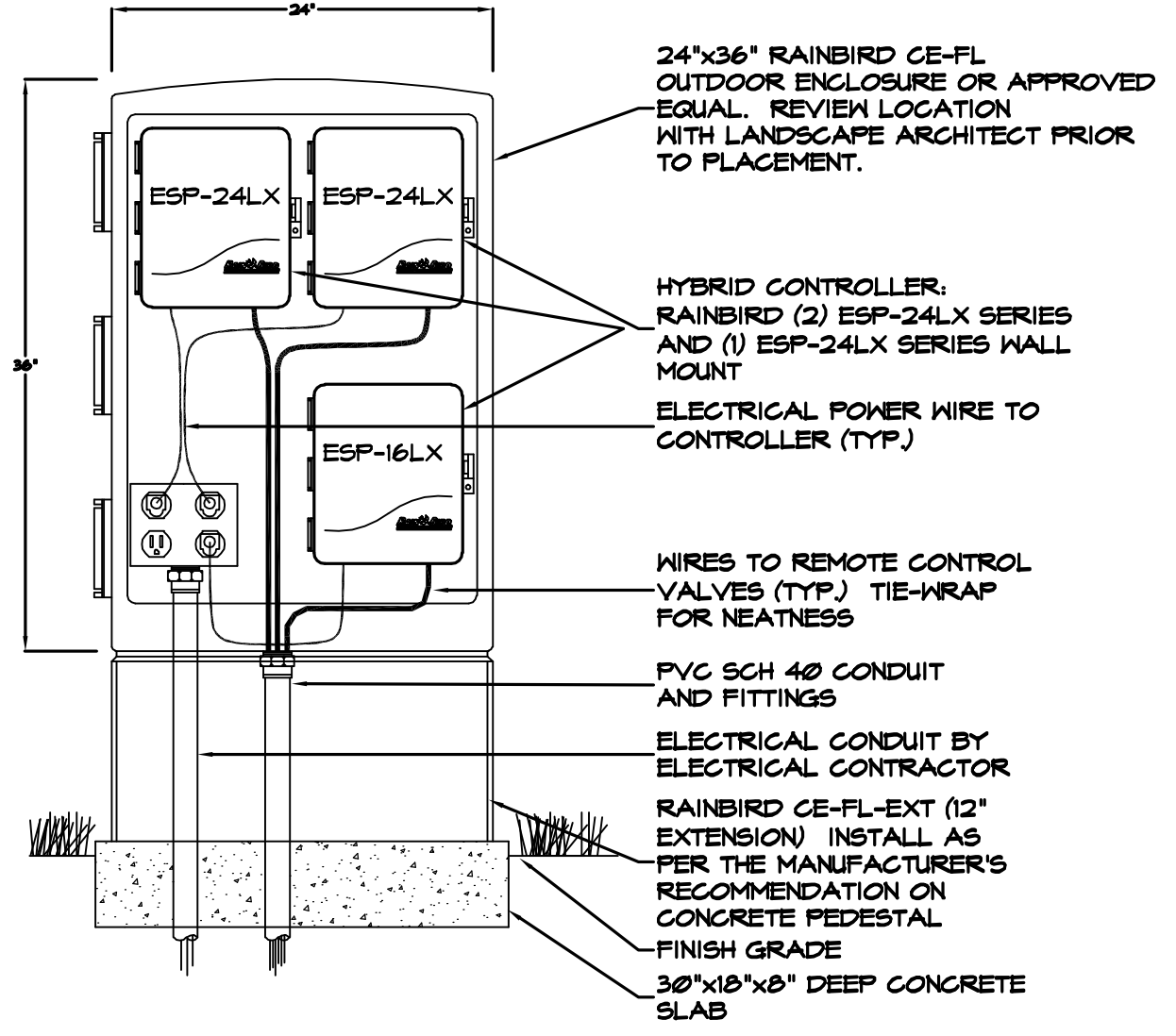


WATERFRONT RESIDENTIAL
ENTRY PHASE - PART B

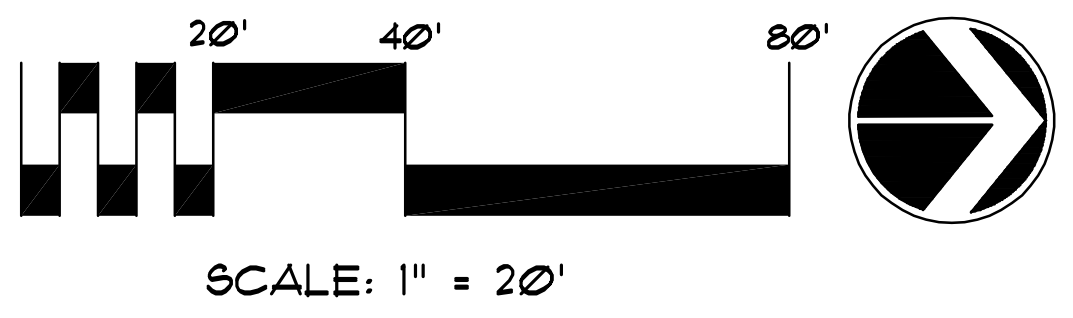


NOTE: IRRIGATION HEAD PLACEMENT SHALL ACCOUNT FOR FUTURE DRIVE CUT



IRRIGATION CONTROLLER PEDESTAL
NO SCALE

- LEGEND**
- IRRIGATED AREAS
 - PROPOSED LIGHT FIXTURE
 - TRANSFORMER
 - PEDESTAL



MASTER PLANT LIST

KEY	QTY.	COMMON NAME	BOTANICAL NAME	SIZE	COMMENTS
DECIDUOUS TREES					
LBE	4	ALLEE LACEBARK ELM	<i>Ulmus parvifolia 'Allee'</i>	3-4" CAL.	B&B
SO	4	SHUMARDI OAK	<i>Quercus shumardi</i>	3-4" CAL.	B&B
STO	3	SANTOOTH OAK	<i>Quercus acutissima</i>	3-4" CAL.	B&B
ABM	4	AUTUMN BLAZE MAPLE	<i>Acer x freemanii</i>	3-4" CAL.	B&B
EVERGREEN TREES					
AP	13	AUSTRIAN PINE	<i>Pinus nigra</i>	10'-12' HT.	B&B
ORNAMENTAL TREES					
ORB	3	OKLAHOMA REDBUD	<i>Cercis reniformis 'Oklahoma'</i>	3" CAL.	B&B
TWB	2	TEXAS WHITEBUD	<i>Cercis canadensis 'Texas Whitebud'</i>	3" CAL.	B&B
FAM	13	'FLAME' AMUR MAPLE	<i>Acer ginnala 'Flame'</i>	6'-7' M.T.	B&B
PFC	12	PRARIFIRE CRABAPPLE	<i>Malus sp. 'Prariefire'</i>	3" CAL.	B&B
SSC	10	SPRING SNOW CRABAPPLE	<i>Malus sp. 'Spring Snow'</i>	3" CAL.	B&B
SHRUBS/ANNUALS					
BTJ	57	NEW BLUE TAM JUNIPER	<i>Juniperus sabinna 'Tamariscifolia New Blue'</i>	5 GAL.	CONTAINER
HRR	39	'HOMERUN' ROSE	<i>Rosa 'Homerun' (Red)</i>	2 GAL.	CONTAINER
ANN	147	ANNUALS (TYPE TO BE DETERMINED)	(TO BE DETERMINED)	6" POTS	CONTAINER
ORNAMENTAL GRASSES					
FRG	62	FORESTER'S FEATHER REED GRASS	<i>Calamagrostis x acutiflora 'Carl Forester'</i>	3 GAL.	CONTAINER
TURF					
SOD	4,104 S.Y.	WISE FESCUE/BLUE MIXTURE			

PLOTTED: Friday, July 25, 2008 @ 02:10PM

LANDSCAPE PLAN
SHEET TITLE
472-84598
PROJECT NUMBER

JAG / MKEC / JAG
DESIGNED DRAWN CHECKED

ISSUED
July 2008

REVISED

SHEET NO.
6 of 8

J:\CIVIL\062605\DWG\LA\ENTRY\VERANDA_LP_AND_DETAILS.DWG