

# STORM WATER DRAIN #287

to serve

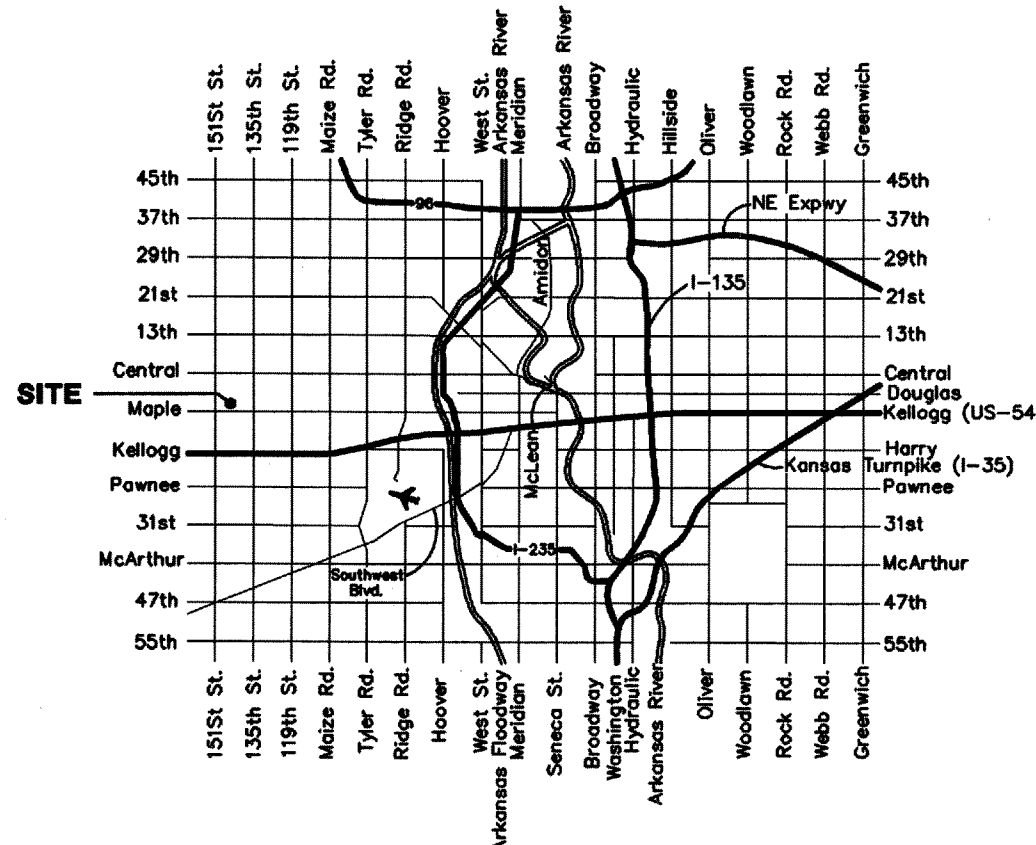
# THE WOODS ADDITION

CITY OF WICHITA, KANSAS

James L. Armour, P.E. City Engineer

Project Number  
468-84131

O.C.A. Number  
751465



VICINITY MAP

### GENERAL NOTES:

- Contractor will be required to provide notice to utility companies a minimum of forty-eight (48) hours prior to any excavation, as follows:  

Kansas One-Call	687-2470
Cox Communications	262-4270
Kansas Gas Service	1-888-482-4950
Westar Energy	383-8650
Aquila Energy	1-800-303-0357
AT&T	1-800-288-2020
City of Wichita Water Dept.	268-4563
City of Wichita Sewer Maint.	268-4024
City of Wichita Traffic Maint.	268-4090
Conoco Phillips Pipeline Co.	268-4034
Southern Star Pipeline Co.	1-877-267-2290
Kinder-Morgan Pipeline Co.	1-888-844-5658
Qwest Midstream Partners L.P.	1-800-467-2751

The Contractor must notify the following in case of an emergency:

- Utility service lines, poles, valve boxes, meters, and etcetera are to be adjusted as necessary by others prior to construction unless the plans specifically call for their adjustment by the Contractor or unless the plans specifically identify a utility to be adjusted by its owner during construction. Existing utilities and their location, as shown on the plans, represent the best information obtainable for design. The Contractor will be required to work around existing utilities within the right-of-way which do not conflict with proposed construction.
- Rubble from the removal of miscellaneous structures and excess excavation which is to be wasted shall be disposed of on sites to be provided by the Contractor. These sites shall be approved by the Engineer as to suitability, appearance and site location. Locations, in the opinion of the Engineer, that will leave an unsightly appearance will not be approved. All disposal sites must be approved by the Kansas Department of Health and Environment. Material either stockpiled or disposed of in a flood plain would require a Kansas State Board of Agriculture permit. Any material dumped in waters of the United States or wetlands is subject to U.S. Corps. of Engineers permitting regulations. Any material buried or stockpiled beyond approved construction limits would require additional archaeological investigations unless buried in a previously approved borrow location.

Trees and shrubs in public right-of-way which are in direct conflict with proposed new construction shall be removed by the Contractor ONLY with the Developer or Baughman Company approval. Trees and shrubs which are not in direct conflict with proposed new construction shall be saved and protected from damage.

- The Contractor shall give all property owners and/or tenants of developed property abutting the construction of this project a minimum of ten (10) days notice prior to start of construction.

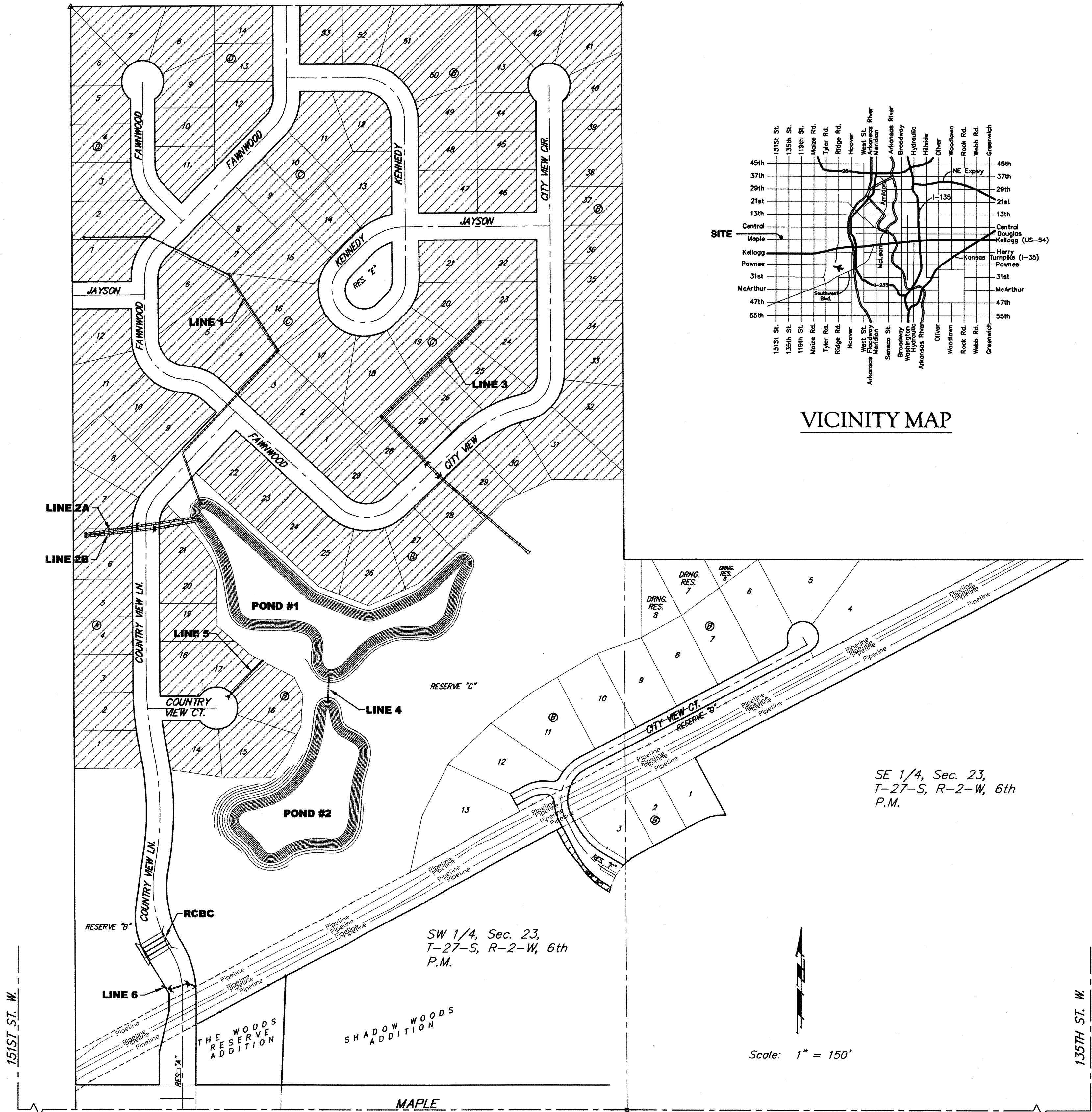
### BENCHMARKS

BM #1: City of Wichita Benchmark Disc, top of curb at west end of curb return, Northwest corner of intersection of City View and Sheriac Cir. in Shadow Woods Addition.  
Elev. = 1386.66 NGVD29

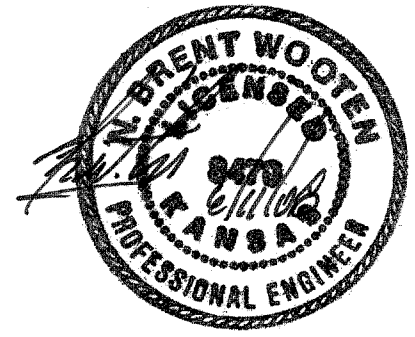
BM #2: City of Wichita Benchmark Disc, Top of curb by fire hydrant at west end of curb return, Northwest corner of intersection of Sheriac Cir. and Sheriac Ct., South of SE corner of Lot 13, Block B, Shadow Woods Addition.  
Elev. = 1392.11 NGVD29

### SHEET INDEX

Title Sheet	1
Mass Grading Plan	2-7
Mass Grading Sections	8
Pond #1	9
Pond #2	10
SWS Line 1	11-13
SWS Line 2A	14
SWS Line 2B	15
SWS Line 3	16-17
SWS Line 4	18
SWS Lines 5 & 6	19
RCBC Plan	20
RCBC Details	21-24
Handrail Details	25
Standard Manhole Details	26
Std. Shallow Manhole Details	27
Manhole Frame & Cover	28
Special Yard Inlet Details	29
Inlet Manhole Details	30
Erosion Control BMP Details	31-34
Coordinate Sheet	35
Copy of Plat	36-37



BENEFIT DISTRICT



Baughman Company, P.A. 315 Ellis St. Wichita, KS 67211 P 316-262-7271 F 316-262-0145  
ENGINEERING | SURVEYING | PLANNING | LANDSCAPE ARCHITECTURE

JUNE 2008