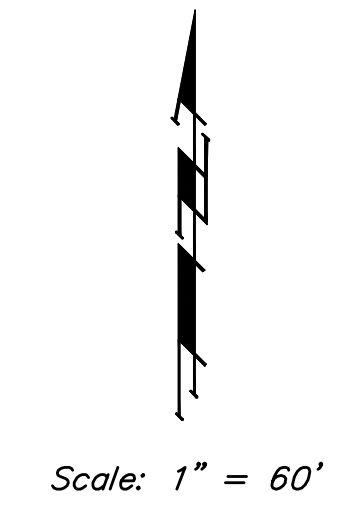
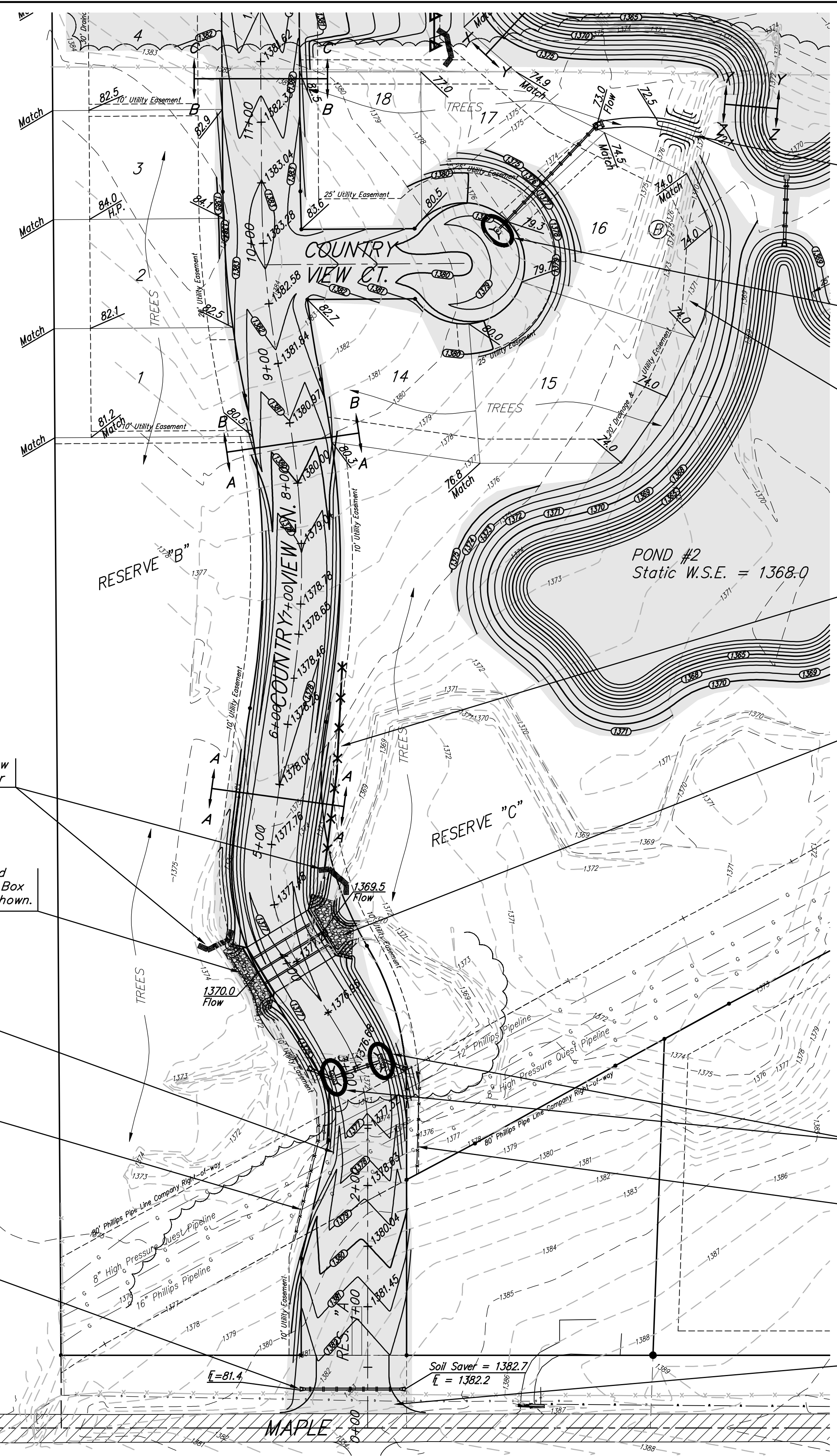


BENCHMARK:

BM #1: CITY OF WICHITA BENCHMARK DISC, TOP OF CURB AT WEST END OF CURB RETURN, NORTHWEST CORNER OF INTERSECTION OF CITY VIEW AND SHERIAC CIR. IN SHADOW WOODS ADDITION.
ELEV. = 1386.66 NGVD29

BM #2: CITY OF WICHITA BENCHMARK DISC, TOP OF CURB BY FIRE HYDRANT AT WEST END OF CURB RETURN, NORTHWEST CORNER OF INTERSECTION OF SHERIAC CIR. AND SHERIAC CT., SOUTH OF SE CORNER OF LOT 13, BLOCK B, SHADOW WOODS ADDITION.
ELEV. = 1392.11 NGVD29



Cut thru Berm as shown with 4:1 Side Slopes. Location of cut-thru shall be field adjusted to avoid trees and final location shall be approved by developer. A skid-steer loader or mini-excavator will be required to perform this work to avoid excess damage to trees.

Install Curb Inlet Sediment Barrier

Place Compacted Fill within Lots 15 & 16, Block B as shown. See Compacted Fill Notes on Sheet 7.

Install 180 L.F. Silt Fence

Grade around end of R.C. Box Culvert as shown.

Install Straw Bale Barrier

Grade around end of R.C. Box Culvert as shown.

Install Curb Inlet Sediment Barrier

Construct 92 L.F. of Temp. Orange Construction Fence. Fence To remain for street construction (other contract). Cost included in "Site Clearing & Restoration."

Strip Topsoil, Fill and Compact as necessary within Maple Street R/W. Construct Construction Entrance

Contractor shall remove trees only when necessary for construction and ONLY with the Developer's approval. Trees that may be trimmed to avoid removal shall be trimmed with a chainsaw.

CAUTION!
Ex. Quest and ConocoPhillips High Pressure Pipeline Crossings

Construct 104 L.F. of Temp. Orange Construction Fence. Fence To remain for street construction (other contract). Cost included in "Site Clearing & Restoration."

Construct 86.0 L.F. 15" RCP with End Sections and a 6" Soil Saver on Upstream End. See Detail, This Sheet. 6 S.Y. Light-Stone Rip-Rap Each End. Regrade Ditch as necessary to drain.

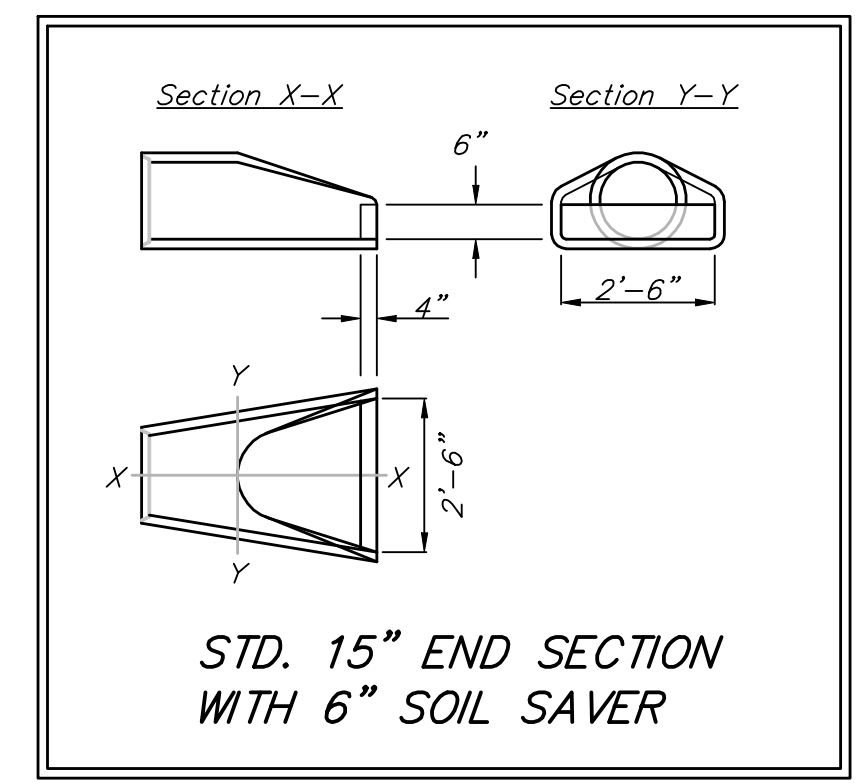
No construction equipment or operation shall be allowed within ConocoPhillips, or Quest easements without first contacting a representative from the respective company, minimum one week prior to construction. No work shall be allowed within these easements until permission has been granted by the pipeline companies and/or encroachment agreements have been signed. All Work must be done Monday through Friday.
Quest Contact: Joe Fowler 913-764-6015
ConocoPhillips Contact: Craig Winn 316-655-5058

Mass Grading and Erosion Control Plan Legend

- Proposed Storm Sewer
- Proposed Grade
- Existing Grade
- Silt Fence
- Erosion Control Berm
- Straw Bale Barrier
- Drop Inlet Sed. Barrier
- Curb Inlet Sed. Barrier
- Area to be graded

EROSION CONTROL MEASURE	UNITS	QUANTITY
Silt Fence	L.F.	180
Straw Bale Barrier	Ea.	2
Curb Inlet Sediment Barrier	Ea.	3
15" RCP	L.F.	86
Light-Stone Rip-Rap	S.Y.	12
Construct Construction Entrance	Ea.	1

Quantities are For Information Only! Contractor shall verify quantities per final bid quantity sheet.



Baughman THE WOODS ADDITION
MASS GRADING
STORM WATER DRAIN #287

Baughman Company, P.A. 315 Ellis St. Wichita, KS 67211 P 316-262-7271 F 316-262-0149
ENGINEERING | SURVEYING | PLANNING | LANDSCAPE ARCHITECTURE

PROJECT NUMBER 468-84131	DESIGN AEG	DRAWN RDM
REVISIONS:	APPROVED AEG	DATE 6-11-08
SCALE NOTED		SHEET 2 OF 37

The Woods Addition\Phase 1\SWD\MASS_POND.dwg