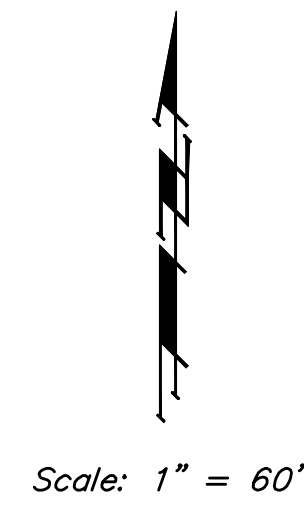


BENCHMARK:

BM #1: CITY OF WICHITA BENCHMARK
DISC, TOP OF CURB AT WEST END OF
CURB RETURN, NORTHWEST CORNER OF
INTERSECTION OF CITY VIEW AND
SHERIAC CIR. IN SHADOW WOODS
ADDITION.
ELEV. = 1386.66 NGVD29

BM #2: CITY OF WICHITA BENCHMARK
DISC, TOP OF CURB BY FIRE HYDRANT
AT WEST END OF CURB RETURN,
NORTHWEST CORNER OF INTERSECTION
OF SHERIAC CIR. AND SHERIAC CT,
SOUTH OF SE CORNER OF LOT 13,
BLOCK B, SHADOW WOODS ADDITION.
ELEV. = 1392.11 NGVD29



Mass Grading and Erosion Control Plan Legend

- Proposed Storm Sewer
- Proposed Grade
- Existing Grade
- Silt Fence
- Erosion Control Berm
- Straw Bale Barrier
- Drop Inlet Sed. Barrier
- Curb Inlet Sed. Barrier
- Area to be graded

EROSION CONTROL MEASURE	UNITS	QUANTITY
Straw Bale Barrier	Ea.	3

Quantities are For Information Only! Contractor shall verify quantities per final bid quantity sheet.

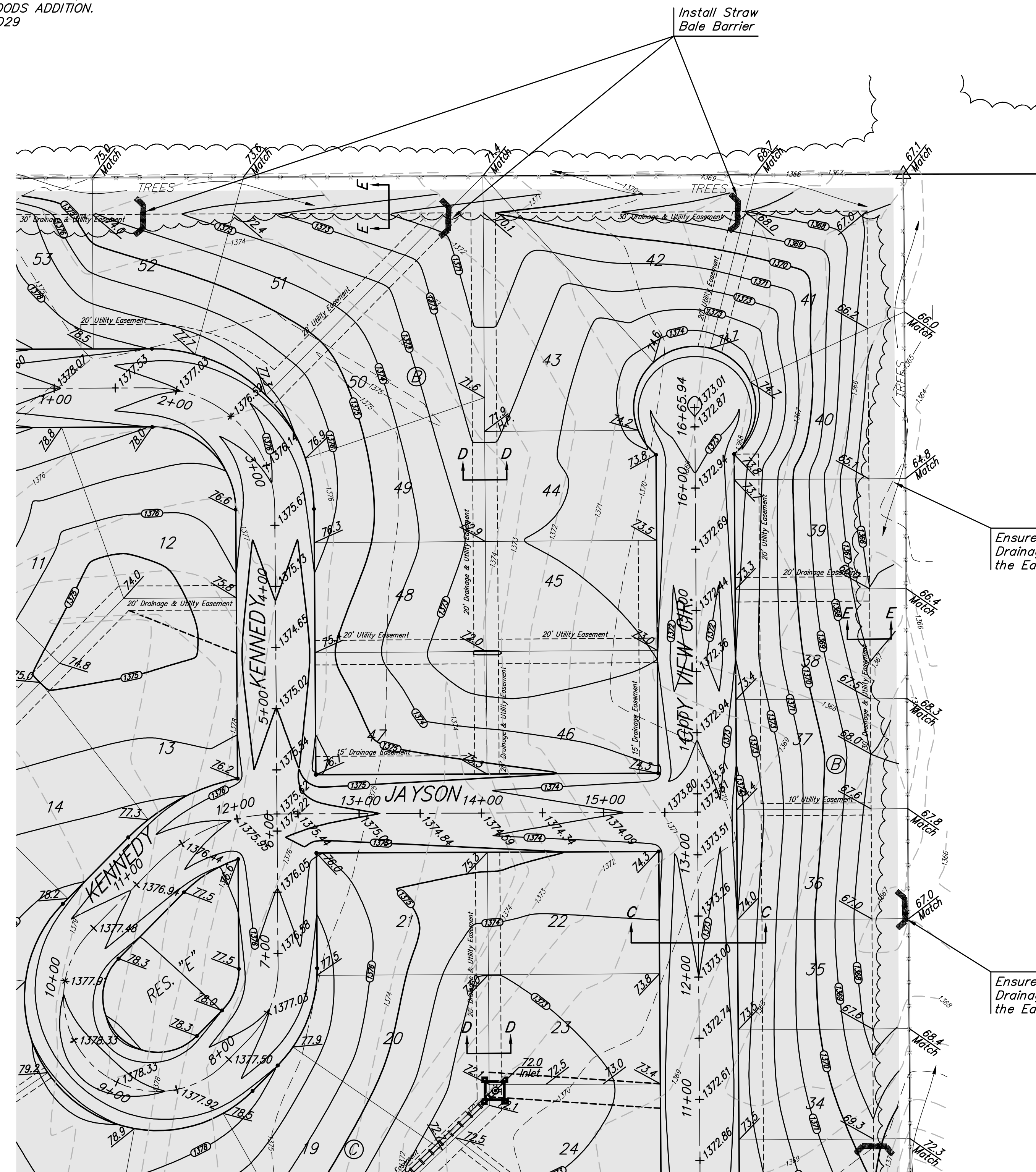
GENERAL NOTES:

- Contractor to strip top 6" of soil in areas of pond construction and street R/W before mass grading and stockpile. Top soil stockpile to be redistributed over reserves above water surface.
- Compaction of 95% of maximum standard proctor density shall be obtained in all street R/W's, 90% in all other areas unless otherwise noted.
- It shall be the Contractor's responsibility to protect any existing utilities during mass grading. Any damage done to these systems by Contractor or subcontractor shall be repaired at no additional cost to the project.
- Unless specifically noted on plans, trees and shrubs in public right-of-way which are in direct conflict with proposed new construction shall be removed by the Contractor ONLY with the Developer or Baughman Company approval. Trees and shrubs which are not in direct conflict with proposed new construction shall be saved and protected from damage. Trees that must be trimmed shall be side trimmed with a chainsaw by the Contractor.
- All areas disturbed during construction within Reserve C, above Static Water Surface, and Maple Street R/W shall be seeded, mulched, and fertilized as follows (Permanent Seeding) unless otherwise noted:

Seed: Kansas Premium Fescue Blend: 10 lbs./1000 sq. ft.
Mulch: Prairie Hay: 2 tons/acre (Not needed where erosion control mat is installed)
Fertilizer: 12-24-12: 850 lbs./acre

All other areas disturbed during construction shall be seeded at 300 lbs./acre with Rye Grass and mulched with prairie hay at 2 tons/acre immediately following construction in that area unless otherwise noted. All costs associated with seeding, mulching, and fertilizing shall be included in bid item "Project Seeding." All seeding operations shall conform to City of Wichita Standard Specifications.

- Excess Excavation shall be spread on Lots 4-13, Block B to grade line shown. See Grading Section "G - G", Sheet 7. All remaining excess excavation shall be stockpiled on Lots 2-7, Block D outside of easements and Street R/W.



Ensure Positive Drainage to the East.

Ensure Positive Drainage to the East.

Contractor shall remove trees only when necessary for construction and ONLY with the Developer's approval. Trees that may be trimmed to avoid removal shall be trimmed with a chainsaw.

EARTHWORK TOTALS*

	CY EXC	CY FILL
POND #1	37,520	0
POND #2	21,550	0
MASS GRADING	42,890	85,090
TOTALS	101,960	85,090

* Earthwork Quantities are unadjusted and are for reference only. Quantity does not include overexcavation for Pond Liner or Stripping of Topsoil.

Baughman

ENGINEERING | SURVEYING | PLANNING | LANDSCAPE ARCHITECTURE

THE WOODS ADDITION

MASS GRADING

STORM WATER DRAIN #287

Baughman Company, P.A. 315 Ellis St. Wichita, KS 67211 P 316-262-7271 F 316-262-0149

PROJECT NUMBER 468-84131	DESIGN AEG	DRAWN RDM
REVISIONS:	APPROVED AEG	DATE 6-11-08
SCALE NOTED		SHEET

5 OF 37

The Woods Addition\Phase 1\SWD\MASS_POND.dwg