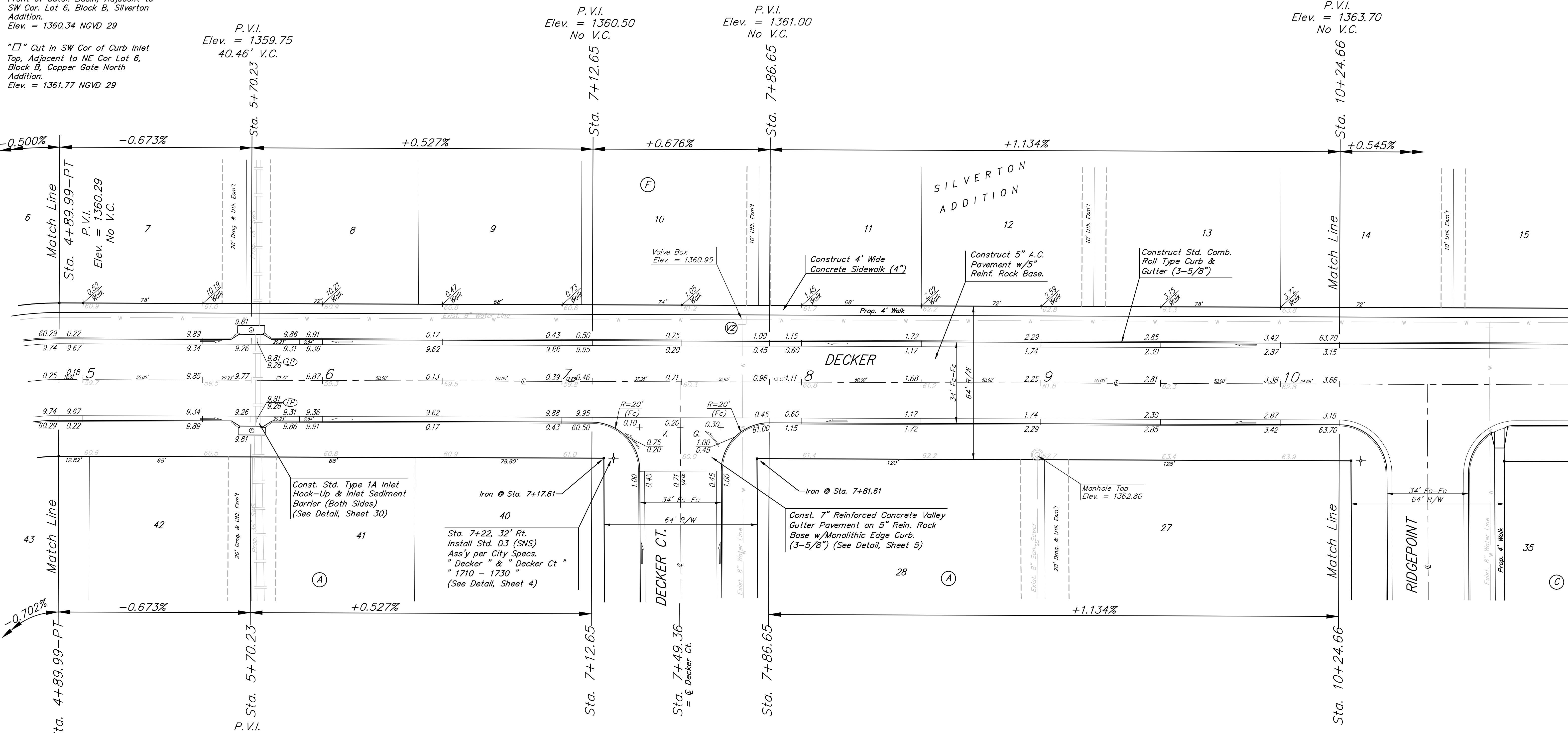


BENCHMARKS:
 Cross Cut In North End of Concrete Valley Gutter, Nickelton & Nickelton Ct., Adjacent to SW Cor. Lot 6, Block C, Silverton Addition.
 Elev. = 1361.49 NGVD 29

Cross Cut In Concrete, E of Curb In Front of Catch Basin, Adjacent to SW Cor. Lot 6, Block B, Silverton Addition.
 Elev. = 1360.34 NGVD 29

"□" Cut In SW Cor of Curb Inlet Top, Adjacent to NE Cor Lot 6, Block B, Copper Gate North Addition.
 Elev. = 1361.77 NGVD 29

Scale: 1" = 20'
 • = Iron



P.V.I.
 Elev. = 1359.75
 40.46' V.C.

P.V.I.
 Elev. = 1360.50
 No V.C.

P.V.I.
 Elev. = 1361.00
 No V.C.

P.V.I.
 Elev. = 1363.70
 No V.C.

Const. Std. Type 1A Inlet Hook-Up & Inlet Sediment Barrier (Both Sides) (See Detail, Sheet 30)

Sta. 7+22, 32' Rt. Install Std. D3 (SNS) Ass'y per City Specs. "Decker" & "Decker Ct" "1710 - 1730" (See Detail, Sheet 4)

Const. 7" Reinforced Concrete Valley Gutter Pavement on 5" Rein. Rock Base w/Monolithic Edge Curb. (3-5/8") (See Detail, Sheet 5)

+1.134%

NOTE: ROLL TYPE CURB & GUTTER TO BE CONSTRUCTED ON THE PAVEMENT SHOWN ON THIS SHEET. TOP OF CURB ELEVATIONS ARE GIVEN FOR FULL HEIGHT CURB.

	Silverton Addition - Phase II	
	DECKER	
STA. 4+89.99 TO STA. 10+24.66		
<small>Baughman Company, P.A. 315 Ellis St. Wichita, KS 67211 P 316-262-7271 F 316-262-0149 ENGINEERING SURVEYING PLANNING LANDSCAPE ARCHITECTURE</small>		
PROJECT NUMBER 472-84460	DESIGN JAK	DRAWN TMS
REVISIONS:	APPROVED	DATE 7/14/08
	SCALE Noted	SHEET
	7 OF 41	
E:\eng\Silverton\Phase 2\STR2.dwg		07-10-E955