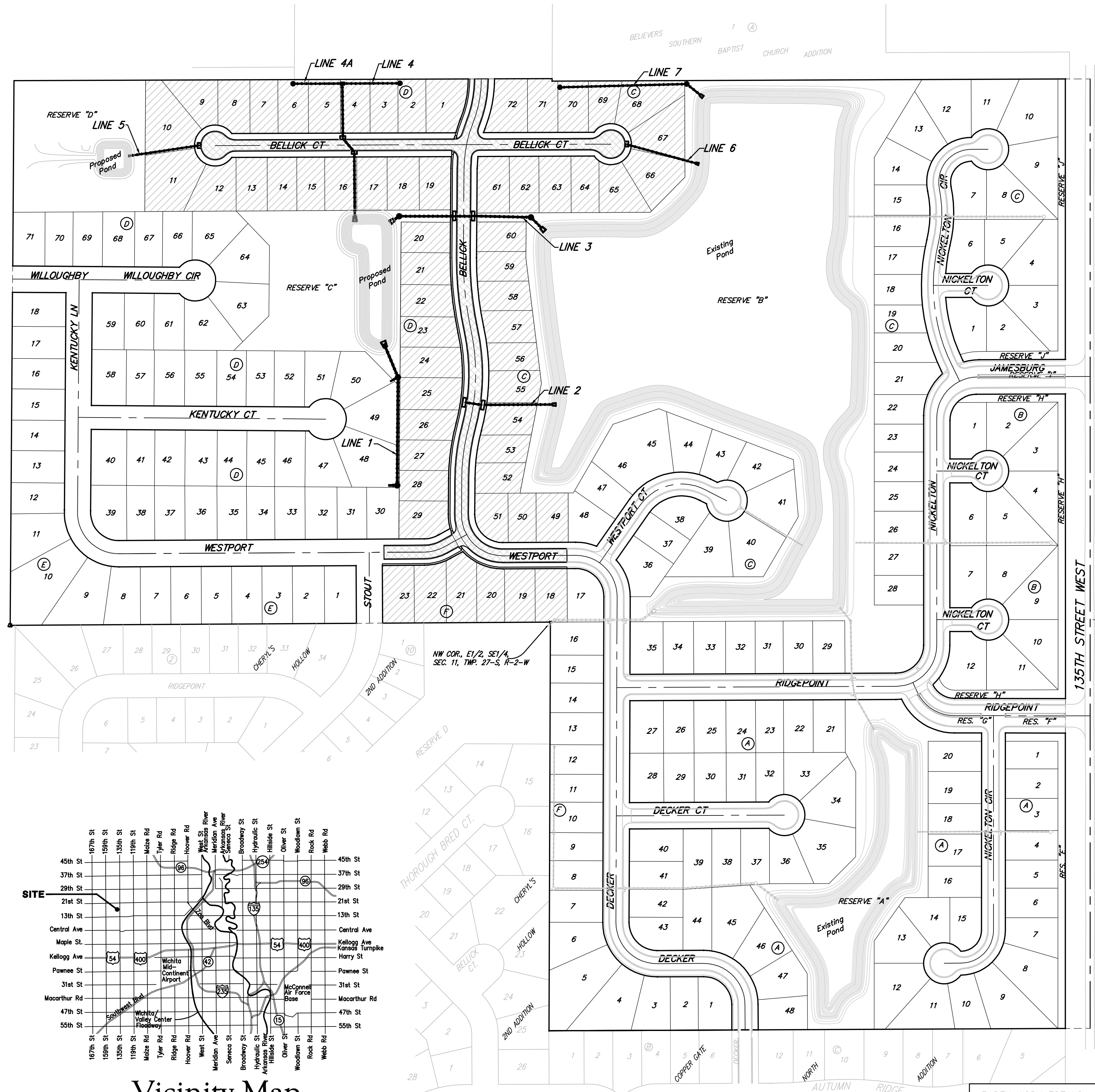


# Street Paving for BELLICK with Incidental SWS Improvements to serve SILVERTON ADDITION - PHASE III

**Westport:** From the West Line of Lot 48, Block C, to the West Line of Lot 23, Block F  
**Bellick:** From the North Line of Westport, to the North Line of the Plat  
**Bellick Ct. (Lots 1-19, Block D):** From the west line of Bellick to and including cul-de-sac  
**Bellick Ct. (Lots 61-72, Block C):** From the east line of Bellick to and including cul-de-sac.

## CITY OF WICHITA, KANSAS

James L. Armour, P.E. City Engineer  
 Project Number 472-84461  
 O.C.A. Number 766203



### Benchmarks

Cross cut in north end of concrete valley gutter, Nickelson & Nickelson Ct., adjacent to SW cor. Lot 6, Block C, Silverton Addition  
 Elev. = 1361.49 NVGD 29

Cross cut in concrete [ of curb in front of catch basin, adjacent to SW cor. Lot 6, Block B, Silverton Addition  
 Elev. = 1360.36 NVGD 29

"□" cut in SW cor of curb inlet top adjacent to NW cor Lot 6, Block B, Copper Gate North Addition  
 Elev. = 1361.77 NVGD 29

### GENERAL NOTES:

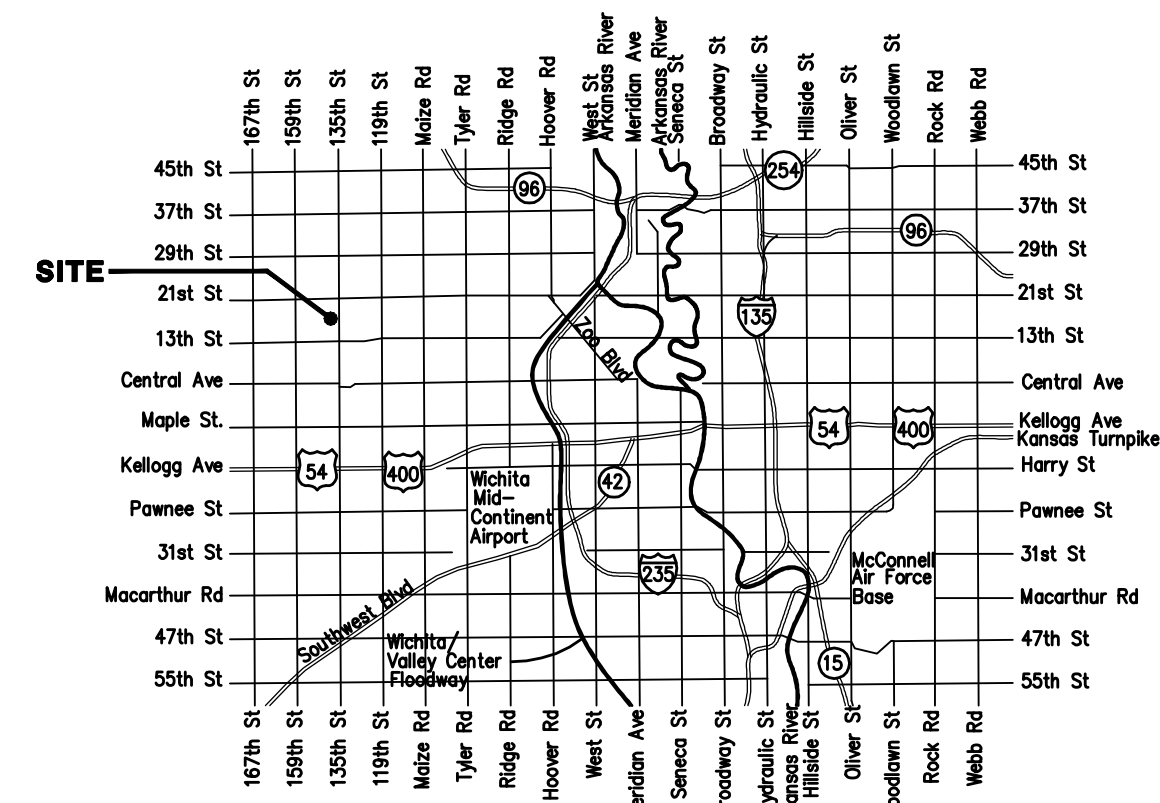
- Contractor will be required to provide notice to utility companies a minimum of forty-eight (48) hours prior to any excavation, as follows:  
 Kansas One-Call 687-2470  
 The Contractor must notify the following in case of an emergency:  
 Cox Communications 262-4270  
 Kansas Gas Service 1-888-482-4950  
 Westar Energy 383-8650  
 Aquila Energy 1-800-303-0357  
 SBC 268-2245  
 City of Wichita Water Dept. 268-4563  
 City of Wichita Sewer Maint. 268-4024  
 City of Wichita Storm Sewer Maint. 268-4090  
 City of Wichita Traffic Maint. 268-4034  
 Conoco Phillips Pipeline Co. 1-877-267-2290  
 Southern Star Pipeline Co. 529-6600  
 Kinder-Morgan Pipeline Co. 1-888-844-5658
- All excess excavation shall remain on-site and shall be spread evenly on the lots outside of easements & R/W's
- All existing and proposed erosion control measures including silt fencing, erosion control mat, straw bales, inlet barriers, and const. entrance shall be maintained throughout construction by the contractor and until project is accepted by the City of Wichita. The on-site engineer shall complete weekly reports on the status of erosion control measures. The contractor shall be required to comply with maintenance and/or replacement of erosion control measures as determined by the on-site engineer until project is accepted by City of Wichita.
- All areas disturbed during construction shall be seeded at 300 lbs./acre with Rye Grass immediately following construction in that area. Contractor shall prepare ground per City Specifications.
- A saw cut of at least one-half the depth of existing surface courses or one-fourth the depth of the existing total pavement thickness shall be provided at locations where proposed construction abuts the existing surface course or pavement for which partial removal of that surface or pavement is required. Sawed joint to facilitate removal within three (3) feet of existing joints will not be permitted and for such instances the limits of removal shall extend to the existing joint. Such saw cuts will not be paid for directly and this cost shall be considered as subsidiary to the removal of the surface or pavement.
- The contractor shall adjust valve boxes as necessary to match proposed grade. Cost to be included in bid item, "Site Clearing & Restoration."
- Cross Sections and Easement Grading Quantities reflect final as-built Mass Grading Topo as of 9/21/07. Contractor of this project shall satisfy himself with the earthwork quantities as bid for "Excavation", "Compacted Fill", and "Easement Grading" prior to bidding. No additional payments or change orders for earthwork will be accepted.
- The developer for this project is Paul E. Kelsey, (316) 722-1077

### Sheet Index

Title Sheet	1
35' Pavement Detail	2
29' Pavement Detail	3
Sign Detail	4
Miscellaneous Details	5
Westport	6-8
Bellick Ct. (Lots 1-19, Block D)	10-11
Bellick Ct. (Lots 1-19, Block D)	12
SWS Line 1	13
SWS Line 2	14
SWS Line 3	15
SWS Line 4	16
SWS Line 4A & Line 5	17
SWS Line 6	18
SWS Line 7	19
Std. Type 1A Single Inlet Detail	20
Std. Type 1A Double Inlet Detail	21
Shallow Manhole Detail	22
Manhole Ring & Cover Detail	23
Special Yard Inlet Detail	24
Standard Drop Inlet Detail	25
Headwall Detail	26
Erosion Control/Esmt. Grading Plan	27-28
Erosion Control BMP Details	29-32
Coordinate Sheet	33-34
Earthwork Cross Sections	35-40
Copy of Plat	41-42

EARTH WORK TOTALS	(UNADJUSTED)		
	Excavation	Compacted Fill	Loose Fill
Street R/W's	2,049	135	21
Esmt. Grading	3,442	-	96
Reserve "C" Pond	8,770	-	0
Reserve "D" Pond	1,907	-	0
<b>Total</b>	<b>16,168</b>	<b>135</b>	<b>117</b>

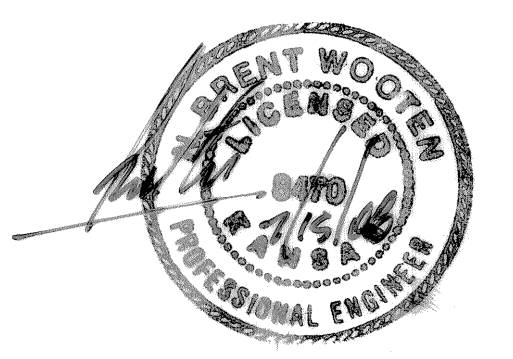
TOTAL PROJECT LENGTH  
 2,542 L.F. = 0.48 Miles



Vicinity Map

Benefit District

Proposed Streets



Baughman Company, P.A. 315 Ella St. Wichita, KS 67211 P 316-262-7271 F 316-262-0145  
 ENGINEERING | SURVEYING | PLANNING | LANDSCAPE ARCHITECTURE