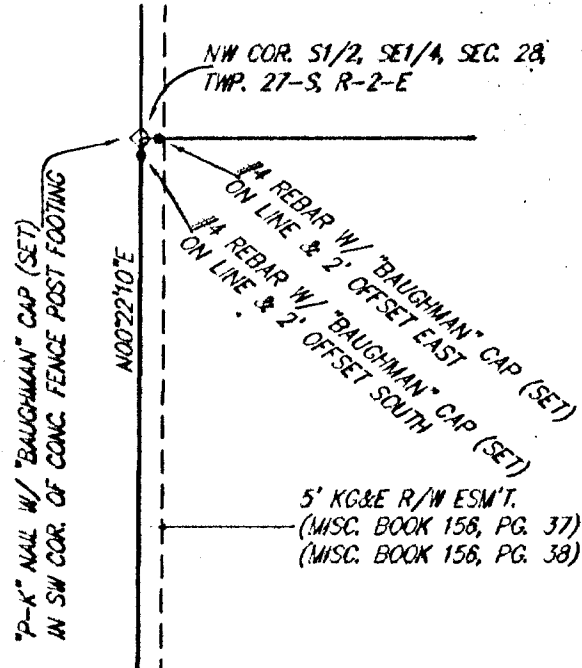


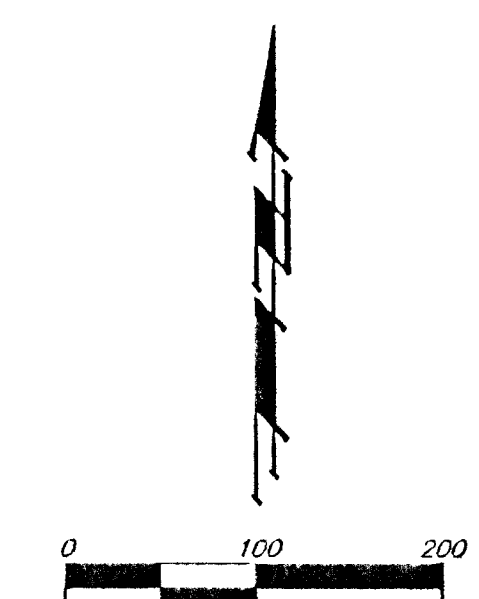
CRYSTAL CREEK ADDITION

WICHITA, SEDGWICK COUNTY, KANSAS



BENCHMARK
C&W Benchmark 400' north of Henry on Todd Street
northwest corner of R20C
Elevation = 157.24 City Datum (154484 NGVD29)

LOT	BLOCK	ELEVATION	
		MINIMUM BUILDING PAD	LOWEST OPENING TO THE STRUCTURES
4	A	154.5	
5	A	154.5	
6	A	154.5	
7	A	155.2	
8	A	155.8	
9	A	158.0	
10	A	157.5	
11	A	158.0	
12	A	158.2	
13	A	158.4	
14	A	158.8	
15	A	158.8	
16	A	159.0	
17, 18, 32	A	159.2	
15-21	B	152.0	
1-3	D	152.0	
4-6	D	151.3	



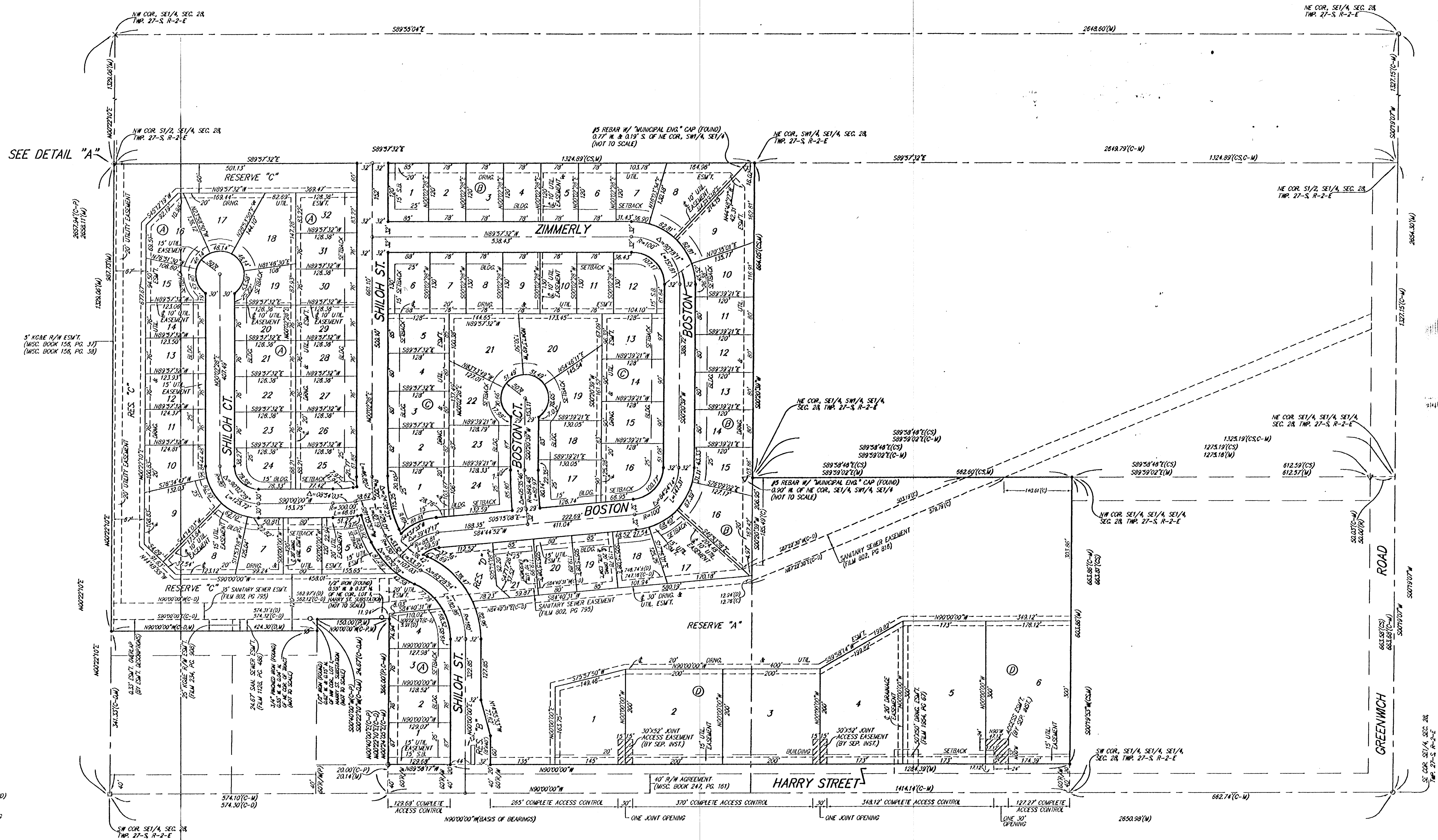
ADDITIONAL BUILDING SETBACK REQUIREMENTS PER COMMUNITY UNIT PLAN DP-265.

- ⊕ = #4 REBAR W/ "BAUGHMAN" CAP (SET)
- ⊙ = 3/4" FINISHED IRON (FOUND)
- ⊚ = 1/2" IRON (FOUND)
- ⊘ = 1/2" IRON IN TRIMBLE (FOUND)
- ⊗ = #5 REBAR W/ "MUNICIPAL ENG." CAP (FOUND)
- ⊛ = CROSS ON FENCE POST FOOTING (FOUND)
- ⊜ = 7'-4" WALK W/ "BAUGHMAN" CAP (SET) IN SW COR. OF CONC. FENCE POST FOOTING

(M) = MEASURED
(D) = DESCRIBED
(P) = PLATTED
(M) = RECORD MEASUREMENT
(C-P) = CALCULATED PER PLATTED INFO.
(CS) = CALCULATED PER THEORETICAL SPATIDOM OF QUARTER SECTION

NOTE:
A DRAINAGE PLAN HAS BEEN DEVELOPED FOR THE COMMERCIAL LOTS AND IS ON FILE WITH THE CITY OF WICHITA, KANSAS. DRAINAGE WENT SHALL REMAIN AS DEPICTED OR AS MODIFIED WITH THE APPROVAL OF THE CITY ENGINEER OF THE CITY OF WICHITA, KANSAS. NO OBSTRUCTIONS WHICH IMPED THE FLOW OF THIS DRAINAGE PLAN SHALL BE ALLOWED.

NOTE:
A MASTER GRADING PLAN FOR DRAINAGE HAS BEEN DEVELOPED FOR THE RESIDENTIAL LOTS AND IS ON FILE WITH THE CITY OF WICHITA, KANSAS. ALL DRAINAGE EASEMENTS, RIGHTS-OF-WAY, OR RESERVES SHALL REMAIN AT ESTABLISHED GRADES OR AS MODIFIED WITH THE APPROVAL OF THE CITY ENGINEER OF THE CITY OF WICHITA, KANSAS. NO OBSTRUCTIONS WHICH IMPED THE FLOW OF THIS DRAINAGE SYSTEM SHALL BE ALLOWED.



C-Creek, L.L.C.

 Jay W. Russell, Member