

STORM WATER SEWER TO SERVE

# Harrison Park 3rd Addition

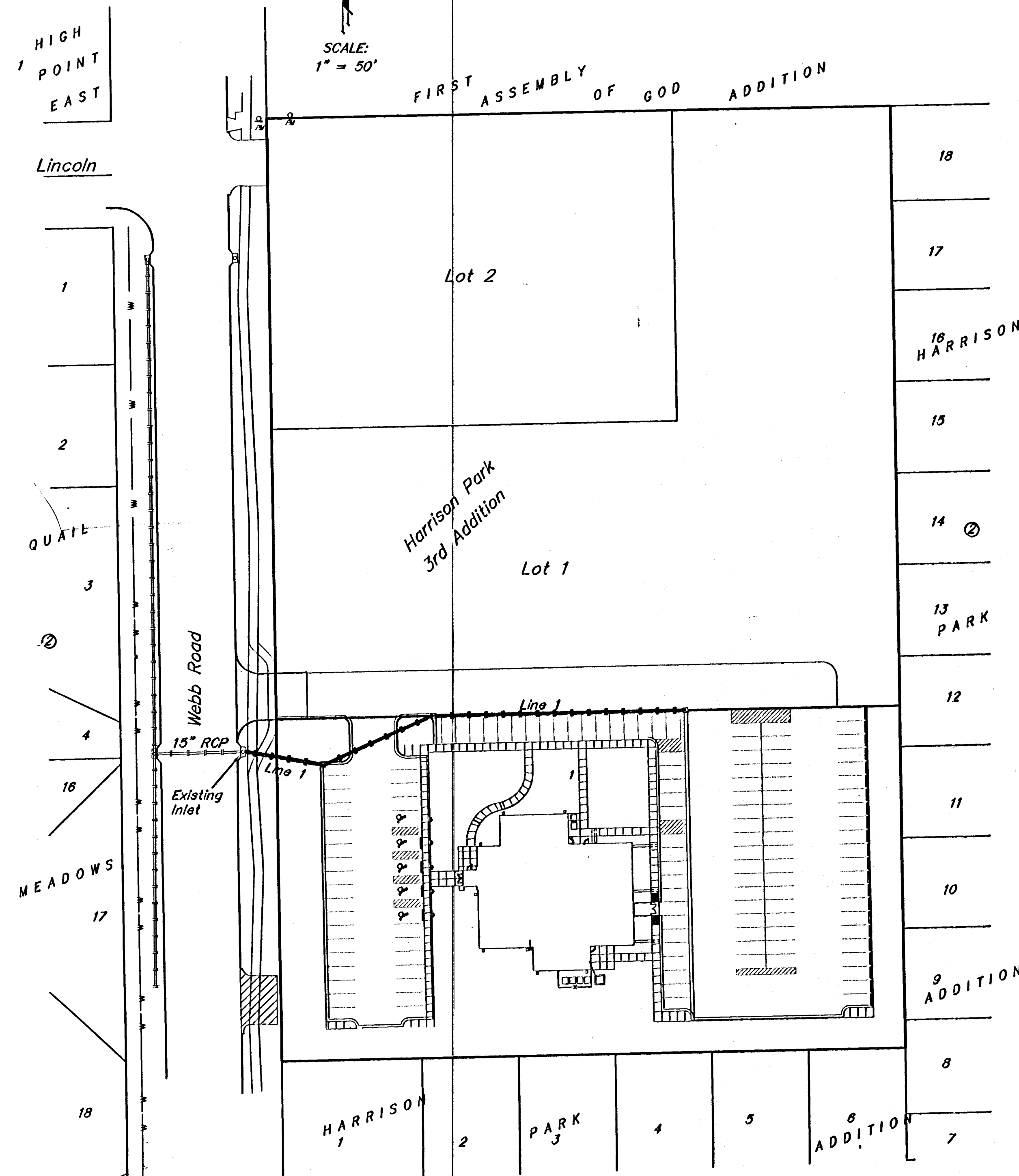
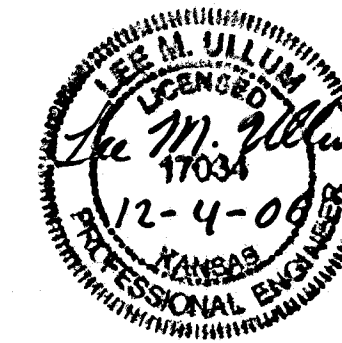
Part Of Lot 1

Private Project Number: 1655 PPS (607861)

CITY OF WICHITA, KANSAS

James Armour, P.E. City Engineer

December 2006



**Bench Marks:**

- Webb Road and Lincoln  
City of Wichita Bench Mark. Southwest corner of intersection. Northwest corner of traffic signal light pole base.  
37.00 Ft. South of center line  
35.90 Ft. West of center line  
Elevation = 176.91 (City Datum)
- Site Bench Mark  
"□" Cut on Center, Front of Catch Basin, East Side of Webb Road West of Property.  
Elevation = 179.40 (City Datum)

**Index**

Cover Sheet	1
Plan/Profile Sheet	2
Grading & Detention Plan	3
Drainage Plan	4
Copy Of Plot	5
BMP Erosion Details	Available On Request
Drop Inlet Detail	Available On Request

**Legal Description**

Part Of Lot 1, Harrison Park 3rd Addition, Wichita, Sedgwick County Kansas.

**General Notes**

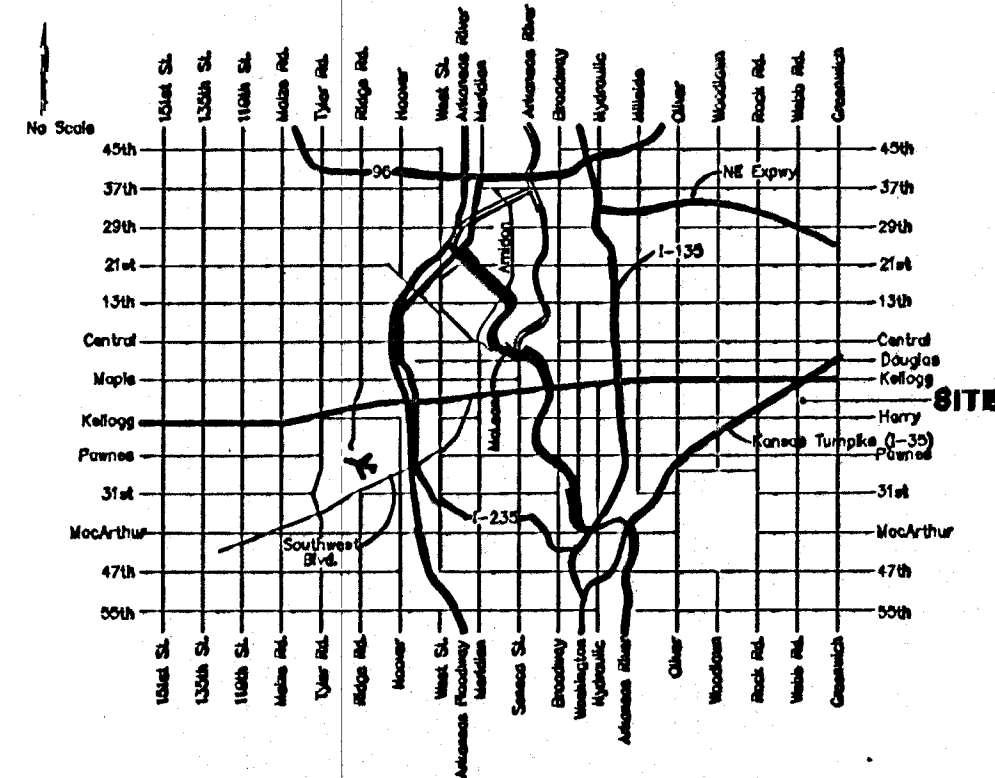
- Contractor will be required to provide notice to utility companies a minimum of forty-eight (48) hours prior to any excavation, as follows:  
Kansas One-Call 687-2470  
The Contractor must notify the following in case of an emergency:  
Cox Communications 262-4270  
Kansas Gas Service Company 1-888-492-4950  
Westar Energy (Electric) 393-2650  
Aquila Energy (Gas) 1-800-303-0357  
SBC (Telephone) 1-900-298-8313  
City of Wichita Water Dept. (Water) 262-6000  
City of Wichita Sewer Maint. (SS) 262-6000  
City of Wichita Storm Sewer Maint. 268-4090  
City of Wichita Traffic Maint. 268-4034
- Utility service lines, poles, valve boxes, meters, et cetera are to be adjusted as necessary by others prior to construction unless the plans specifically call for their adjustment by the Contractor or unless the plans specifically identify a utility to be adjusted by its owner during construction. Existing utilities and their location, as shown on the plans represent the best information obtainable for design and shall be field verified. The contractor will be required to work around existing utilities within the right-of-way which do not conflict with proposed construction.
- Rubble from the removal of miscellaneous structures and excess excavation which is to be wasted shall be disposed of on sites to be provided by the Contractor. These sites shall be approved by the Engineer as to suitability, appearance and site location. Locations that, in the opinion of the Engineer, will leave an unsightly appearance will not be approved. All disposal sites must be approved by the Kansas Department of Health and Environment. Material either stockpiled or disposed of in a flood plain would require a Kansas State Board of Agriculture permit. Any material dumped in waters of the United States or wetlands is subject to U.S. Corps. of Engineers permitting regulations. Any material buried or stockpiled beyond approved construction limits would require additional archaeological investigations unless buried in a previously approved borrow location.
- The Contractor shall give all property owners/tenants of developed property directly abutting the construction of this project a minimum of two (2) days notice prior to start of construction.
- Contractor shall not start work on the project until the project inspector is assigned to the project and is present on the site. Contractor shall not start on the project until all necessary bonds and permits have been obtained. Bonds may include but are not limited to Statutory, Performance & Maintenance for areas in public right-of-way and easement. For projects within the City of Wichita contact Tom Mason (268-4574). Any work done without inspection will be required to be uncovered for inspection.
- Storm water sewer lines & appurtenances shall be installed in accordance with the most recent edition of City of Wichita, Kansas Standard Specifications for the Construction of City Projects.
- All disturbed R/W areas not intended for pavement or sidewalk construction shall be seeded with Kansas Premium Fescue Blend at a rate of 8 lb./1000 Sq. Ft., fertilized with a 16-20-8 ratio at a rate of 4 lb./1000 Sq. Ft. and mulched with Prairie Hay at a rate of 92 lb./1000 Sq. Ft. Mulch shall be "patted" with forks or punched into soil to reduce loss due to wind.
- Cuts made to paved surfaces on public property will be repaired by the City's contractor and charged against the owner/applicant. Unit repair prices are available from the City at 268-4418. A surcharge may be applicable; call 268-4418 for details. Repair costs to be paid prior to release of sewer service if sewer service is affected. Contractor shall obtain permit prior to construction.
- Contractor to remove concrete sidewalk to the nearest construction joint if within 3' of joint. Saw cut if over 3' from joint. Removal of pavement shall not be paid for directly, but shall be considered incidental to other items in the project.
- Contractor shall contact Terry Blanding of Southern Star Central 48 hours prior to excavation. 529-6622
- Contractor shall contact Joe Freeman of Raytheon 48 hours prior to excavation. 676-7911

APPROVED AS NOTED  
BY CITY ENGINEER OF WICHITA

Storm Sewers *12.8.06*

NOTE TO CONTRACTORS  
Installation, inspection and testing for this project is to be provided by a Licensed Consulting Engineering Firm under contract with the Owner/Developer. Said inspection to be in accordance with the City of Wichita standard construction engineering practices and certified by a Licensed Professional Engineer. No work shall be performed in dedicated easements or public right-of-way by the Contractor without such inspection nor shall any work be commenced without written authorization by the City Engineer. All Construction and Materials shall comply with the City of Wichita Specifications and Standards (on file and available in the City Engineer's Office).

**Location Map**



AS-BUILT 8-24-2007

Baughman Company, P.A. 315 Ellis St. Wichita, KS 67211 P 316-262-7771 F 316-262-0141  
ENGINEERING | SURVEYING | PLANNING | LANDSCAPE ARCHITECTURE