

STORM SEWER IMPROVEMENTS TO SERVE WASI PLANT FACILITY, PHASE 2

1752 PPS (607861)
CITY OF WICHITA, KANSAS
Jim Armour, P.E., City Engineer

INDEX OF SHEETS

- 1 Cover Sheet
- 2-3 Plan and Profile
- 4 MH Detail

GENERAL NOTES

1. Contractor will be required to provide notice to utility companies a minimum of twenty-four (24) hours prior to any excavation, as follows:

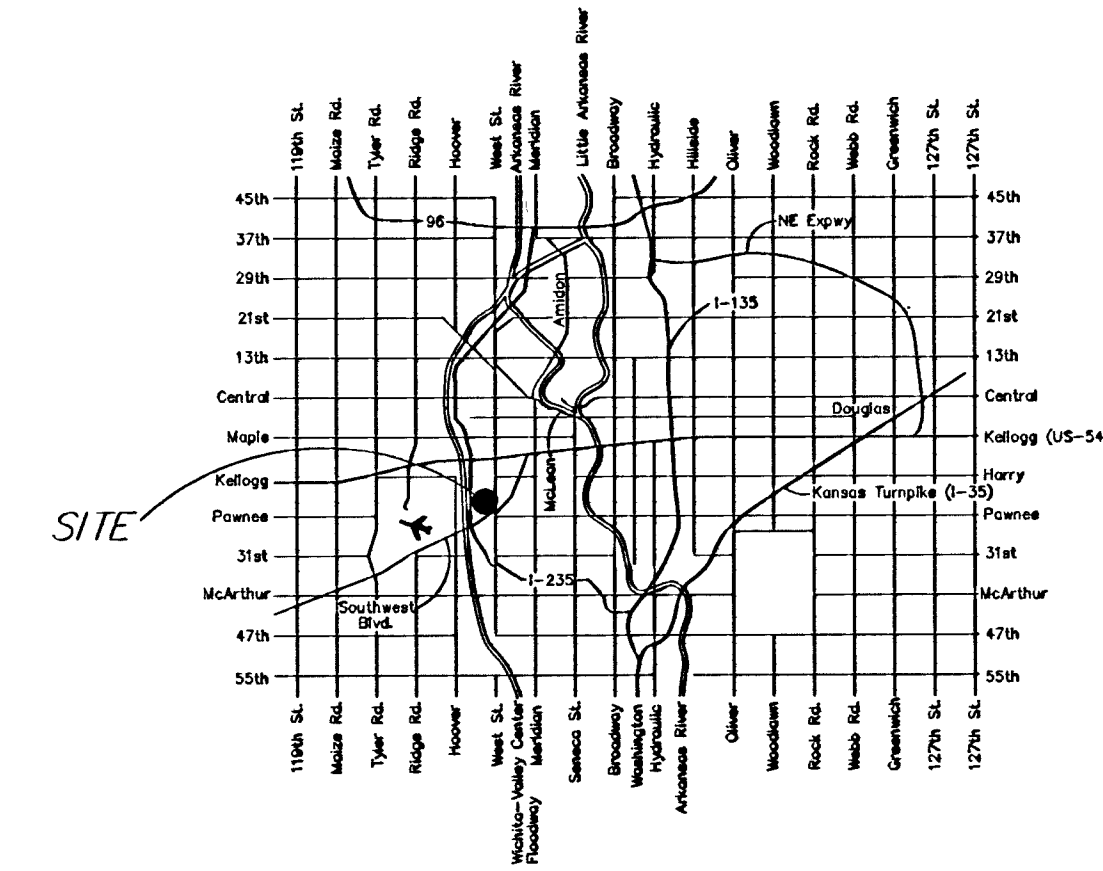
Kansas One-Call	687-2470
-----------------	----------

The Contractor must notify the following in case of an emergency:

Cablevision	262-4270
or	263-2061
Westar Energy	383-8050
	383-8000

Southwestern Bell Telephone Company 1-571-2411
City of Wichita Water Department 268-4908
City of Wichita Sewer Department 268-4071
Kansas Gas Service 832-3168
or 832-3167
2. Exist. utilities and their locations, as shown on the plans, represent the best information obtainable for design. Location information has been obtained from the various utility companies and is either from company record drawings or company-provided field locations. The Contractor will be required to work around existing utilities which do not conflict with proposed construction.
3. The Contractor to verify utility locations prior to construction of this project.
4. Utility service and installation shall be coordinated with the respective utility owners. Contacts are:

Kansas Gas Service	Jim Coe	832-3126
Westar Energy	Mites Capps	261-6824
Wichita Water	Paul Bryant	268-4555
	Steve Palmer	268-4908
Southwestern Bell	Jim Toben	268-2759
Multimedia Cablevision	Mark Anaya	262-4270
5. All lawn/turf areas disturbed by construction of proposed improvements shall be restored with seed. All seeding work shall be in accordance with the City of Wichita standard specifications and the City of Wichita administrative regulation No. AR78 which governs cleanup and replacement following construction. All costs for this work shall be subsidiary to the lump sum price bid for "Site Restoration."
6. Traffic affected by the construction of this project shall be handled in accordance with the latest edition of the Manual on Uniform Traffic Control Devices.
8. Properties within the project may have underground irrigation systems (lawn sprinklers) which conflict with the new construction. Contractor shall remove such components as needed during construction of the project. The irrigation system shall be reinstalled in like kind before project completion. Any irrigation system modifications required because of project improvements shall be coordinated with the property owner. Portions of underground irrigation systems not in conflict with construction shall be protected from damage and shall remain in place. All work related to underground irrigation/sprinklers shall be subsidiary to Site Restoration.
9. Cuts made to paved surfaces on public property will be repaired by the City's contractor and charged against the owner / applicant. Unit repair Prices are available from the City at 268-4418. A surcharge may be applicable; Call 268-4418 for details. Repair costs to be paid prior to release of water Service if water service is affected.

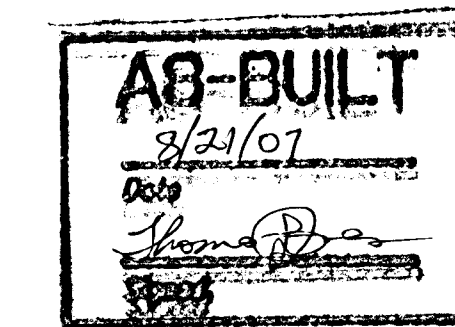


LOCATION MAP

Benchmark:
BM 1 Temporary bench mark.
SE corner of intersection of West St.
and May St. Box cut in NE corner of
concrete base of sign "May Central Park"
Elev.=111.67

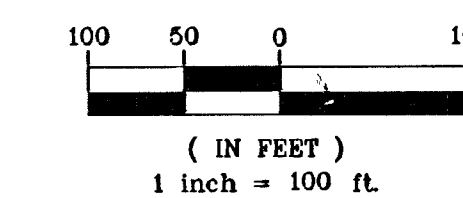
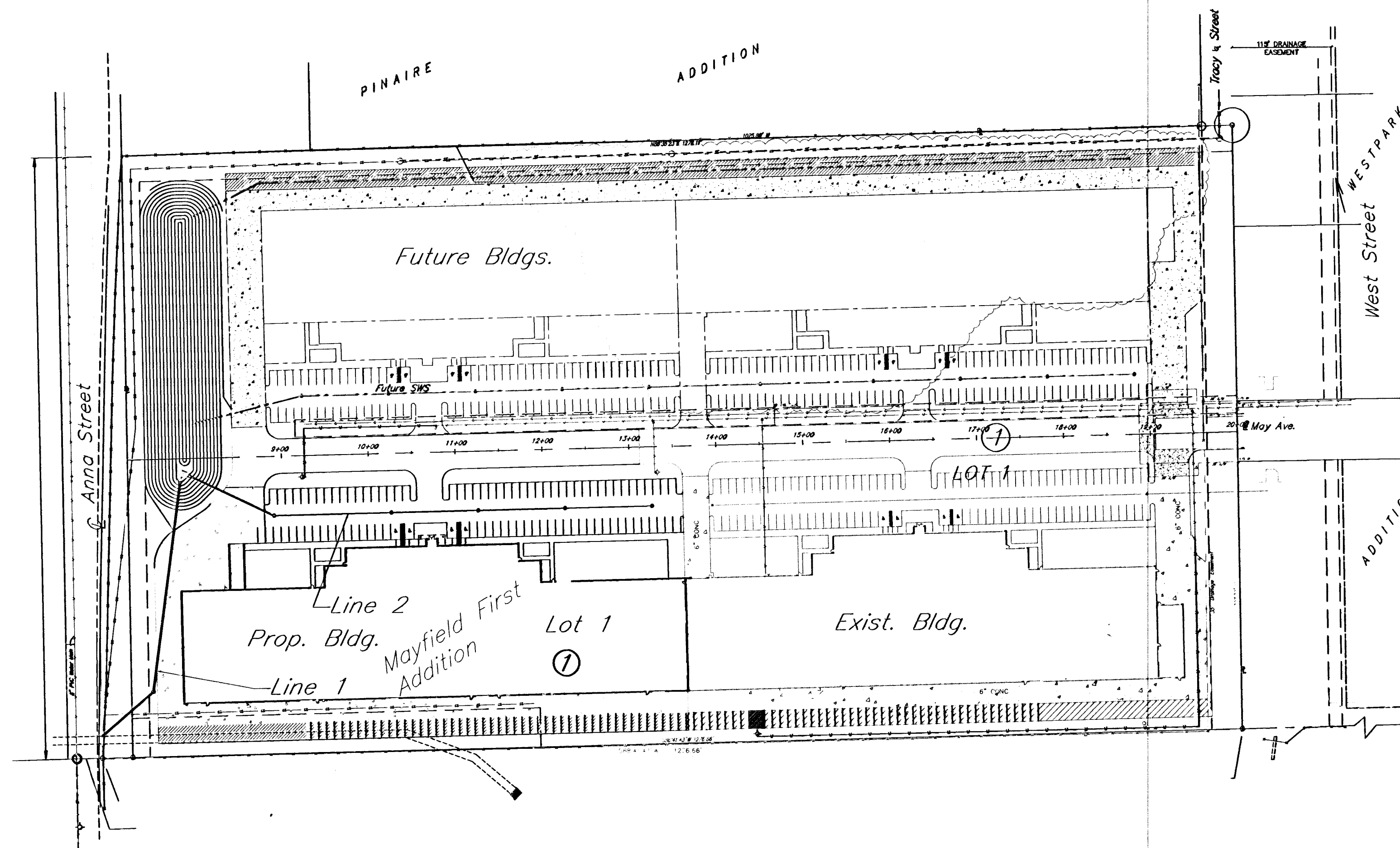
BM 2 COW Bench mark. NW
corner of intersection of West St.
and May St.. 65' W of centerline
of West St. 50' N of centerline of
May. 28.8' N of center of median.
14.4' W of west face of sidewalk.
2.5' N of back of curb. 2.2' W of
west face of SWS inlet.
Elev.=108.63

Baseline:
20+00 on the East Prop.
Line on the centerline of
May Street.



APPROVED AS NOTED
City Engineer Office VRH 3/20/07

NOTE TO CONTRACTORS
Installation, inspection and testing for this project is to be provided by a Licensed Consulting Engineering Firm under contract with the Owner/Developer. Said inspection to be in accordance with the City of Wichita standard construction engineering practices and certified by a Licensed Professional Engineer. No work shall be performed in dedicated easements or public right-of-way by the Contractor without such inspection nor shall any work be commenced without written authorization by the City Engineer. All construction and materials shall comply with the City of Wichita Specifications and Standards (on file and available in the City Engineer's Office).



February, 2007



516 S. Market,
Wichita, KS 67202

316/264-0242