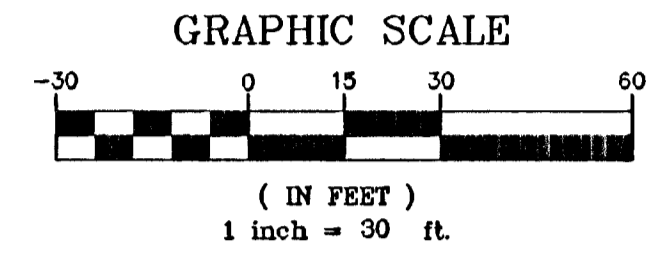
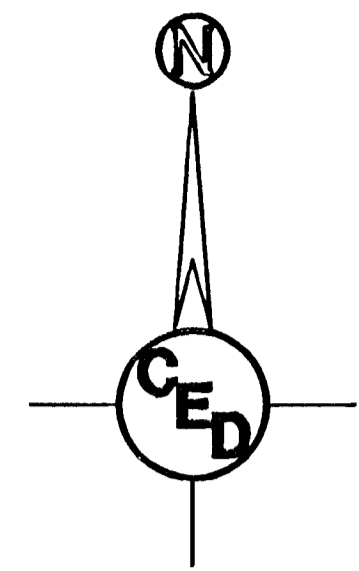


HORIZONTAL CONTROL POINTS		
C.P. NO. 1	N 18865.70 E 18667.93	1/2" REBAR w/SAVOY CAP SET ON NORTHWEST PROPERTY CORNER LOT 3
C.P. NO. 2	N 18500.78 E 18675.21	1/2" REBAR w/SAVOY CAP SET ON SOUTHWEST PROPERTY CORNER LOT 7
C.P. NO. 3	N 18509.30 E 19058.05	1/2" REBAR w/SAVOY CAP SET ON SOUTHWEST PROPERTY CORNER LOT 7
C.P. NO. 3	N 18873.78 E 19030.65	1/2" REBAR w/SAVOY CAP SET ON NORTHEAST PROPERTY CORNER LOT 3

BENCHMARK:
"Square" Cut on North Curb
Return of Driveway at SW
Corner of Subject Property.
Elev.=1286.76



- LEGEND**
- G = GAS MAIN
 - W = WATER MAIN
 - SS = SANITARY SEWER
 - SWS = STORM WATER SEWER
 - USE = UNDER GROUND ELECTRIC
 - UGT = UNDER GROUND TELEPHONE
 - TELE. PED. TELEPHONE PEDESTAL
 - H.P. HIGH LINE POLE
 - P.P. POWER POLE
 - SIGN SIGN
 - W.M. WATER METER
 - SS M.H. SANITARY SEWER MANHOLE
 - SWS M.H. STORM WATER SEWER MANHOLE
 - T.S. TRAFFIC SIGNAL
 - Stl. Post STEEL POST
 - SAV. 1/2" REBAR W/SAVOY CAP (SET)

EROSION CONTROL LEGEND

- = 8' Wide Back of Curb Protection
- = Inlet Protection

(Contractor will be Responsible for any additional Erosion Control Devices not shown on these plans that are necessary to prevent erosion.)

- = Stabilized Construction Entrance

PERMANENT SEEDING

NOTE: All areas disturbed by construction, excepting the paved areas, proposed sodded area and areas of undisturbed native sod or other desirable vegetation shall be fertilized (limed when required), seeded in kind, and mulched. Soil preparation shall conform to the Best Management Practices for Erosion and Sediment Control.

After the temporary seeding has been completed on the entire project, the permanent seeding shall be done during the normal seeding season.

It shall not be required to till the area to bare ground prior to permanent seeding. If temporary cover has provided stable slopes with no erosion, seed the permanent grasses into the existing cover. If there has been erosion that requires repair prior to seeding, then it may be necessary to regrade the area, resulting in bare ground.

FERTILIZER: A ratio and application rate that equals or exceeds the required minimum rate per acre listed in Summary of Seeding Quantities will be acceptable.

MULCHING: Mulch shall be spread uniformly over all disturbed areas(not covered by erosion mat) and punched in the soil, unless otherwise noted on the plans. The rate of application per acre, thickness in place, for the various mulching materials are as follows:

Prairie Hay Mulching: 1-3/4 to 2-1/4 Tons per Acre = 1-1/2" loose depth spread uniformly over acre.

The above rates are a guide. It will be at the discretion of the Engineer to determine what rate is sufficient for adequate protection of newly seeded areas.

The amount of mulch required shall be determined in the field.

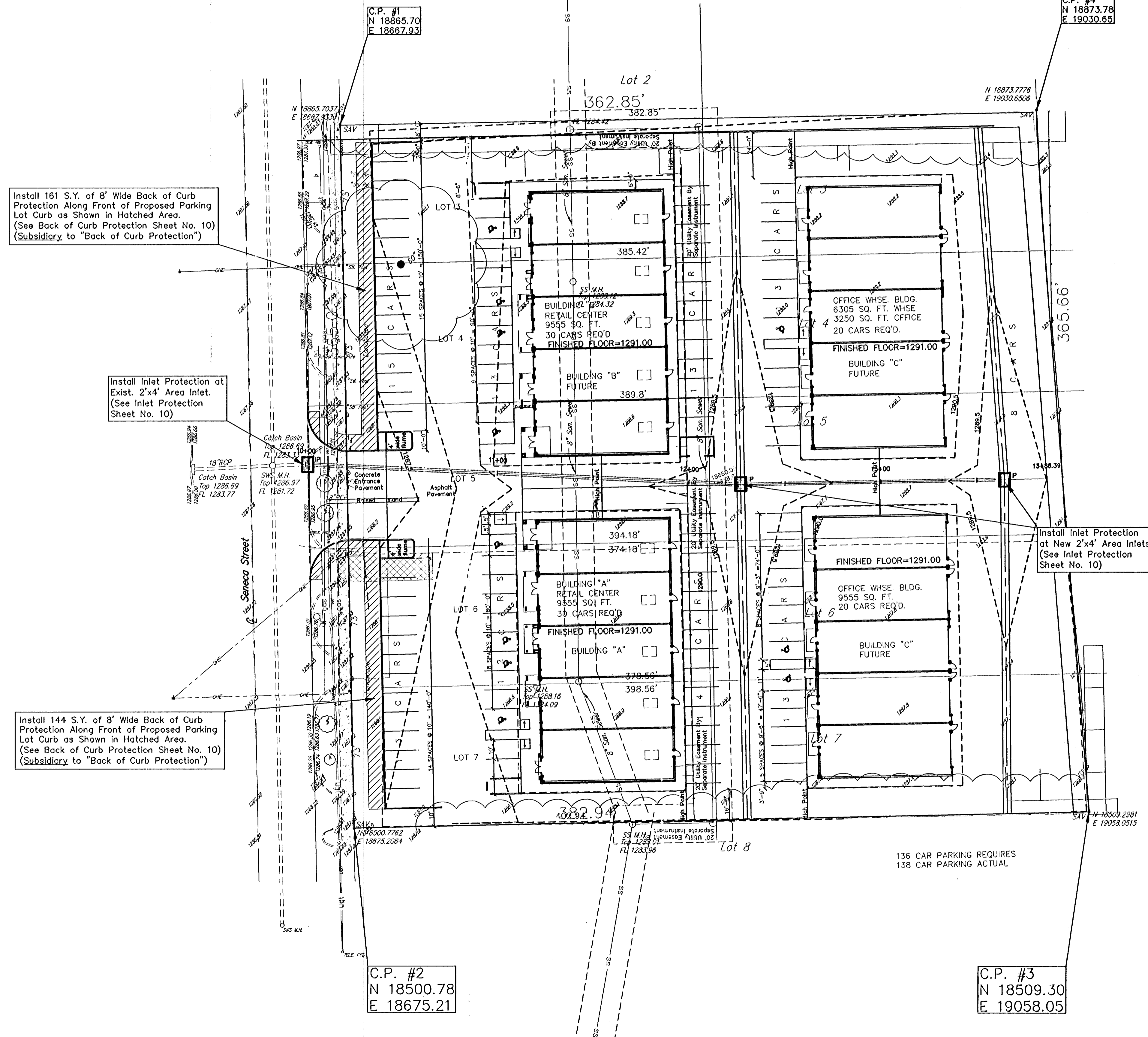
SEEDING PERIODS	
COOL SEASON	WARM SEASON
February 15 to April 20	December 1 to April 30
and	
August 15 to September 30	
SPECIES	SPECIES
Blue Grasses	Bluestems
Bromus Grasses	Buffalo Grass
Fescues	Eastern Gama Grass
Rye Grasses	Grammas
Wheat Grasses	Indian Grass
Red Canary Grass	Low Grasses
	Switch Grass
	Wildflower Mixes

When "COOL SEASON" species are mixed with "WARM SEASON" species, in areas of 5 acres or more, the mixture shall be seeded during the "WARM SEASON". In areas of less than 5 acres, the mixture of "COOL SEASON" and "WARM SEASON" species may be seeded during the "WARM or COOL SEASONS".

SUMMARY OF PERMANENT SEEDING QUANTITIES

RATE OF APPLICATION (Pure Live Seed per acre)	DESCRIPTION	QUANTITY
100 Lbs./Acre	Grass Seeding (in Kind)	As Required
125 Lbs./Acre	Fertilizer(16-20-0)	As Required
	Mulching	As Required

UTILITIES SHOWN REPRESENT THE BEST INFORMATION AVAILABLE FOR DESIGN. ADDITIONAL UTILITIES MAY BE PRESENT ON THIS PROJECT. THE CONTRACTOR SHALL BE RESPONSIBLE FOR DETERMINING THE EXACT LOCATION, DEPTH AND SIZE OF ALL UNDERGROUND UTILITIES PRIOR TO CONSTRUCTION. THE CONTRACTOR SHALL BE LIABLE FOR ANY DAMAGE CAUSED BY THE FAILURE TO DO SO.



Install 161 S.Y. of 8' Wide Back of Curb Protection Along Front of Proposed Parking Lot Curb as Shown in Hatched Area. (See Back of Curb Protection Sheet No. 10) (Subsidiary to "Back of Curb Protection")

Install Inlet Protection at Exist. 2'x4' Area Inlet. (See Inlet Protection Sheet No. 10)

Install 144 S.Y. of 8' Wide Back of Curb Protection Along Front of Proposed Parking Lot Curb as Shown in Hatched Area. (See Back of Curb Protection Sheet No. 10) (Subsidiary to "Back of Curb Protection")

Install Inlet Protection at New 2'x4' Area Inlets. (See Inlet Protection Sheet No. 10)

C.P. #2
N 18500.78
E 18675.21

C.P. #3
N 18509.30
E 19058.05

SURVEY DISCLAIMER:
TOPOGRAPHIC SURVEY USED IN PREPARING PLANS WAS PROVIDED BY GARBER SURVEYING SERVICE, (620) 665-7032, 423 WEST FIRST AVE., HUTCHINSON, KS. ENGINEER DOES NOT GUARANTEE SURVEY ELEVATIONS FOR ACCURACY. CONTRACTOR SHALL VERIFY ELEVATIONS AND NOTIFY ENGINEER OF ANY DISCREPANCIES.

WEST PARK GARDENS
SITE PLAN/EROSION CONTROL
WICHITA, SEDGWICK COUNTY, KANSAS
PROJ. NO.: 20061452
CERTIFIED ENGINEERING DESIGN, P.A.
810 WEST DOUGLAS, SUITE C
WICHITA, KANSAS 67203
PH.(316)262-8808 FAX.(316)262-1669

DESIGNED: HDF SCALE: 1"=30' SHEET 2
DRAWN: JDT DATE: 10-08
CHECKED: HDF CED FILE: Lorry Cook Base TOTAL 10

AS-BUILT 9-14-07
T. J. C&D