

**GRAPHIC SCALE**

( IN FEET )

Horizontal 1 inch = 20 ft  
Vertical 1 inch = 5 ft

**LEGEND**

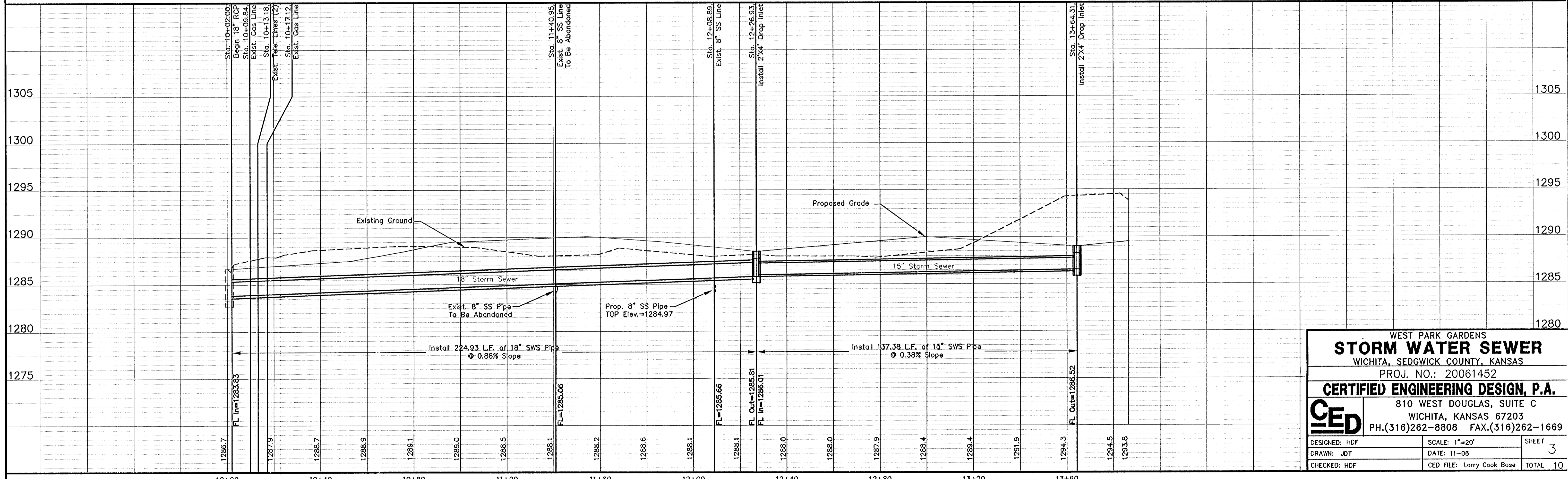
G = GAS MAIN  
 W = WATER MAIN  
 SS = SANITARY SEWER  
 SWS = STORM WATER SEWER  
 UGE = UNDER GROUND ELECTRIC  
 UGT = UNDER GROUND TELEPHONE

TELE. PED ..... TELEPHONE PEDESTAL  
 HIGH LINE POLE .....  
 POWER POLE .....  
 SIGN .....  
 W.M. .... WATER METER  
 SS M.H. .... SANITARY SEWER MANHOLE  
 SWS M.H. .... STORM WATER SEWER MANHOLE  
 T.S. .... TRAFFIC SIGNAL  
 St. Post ..... STEEL POST  
 SAV ..... 1/2" REBAR W/SAVOY CAP (SET)

**BENCHMARK:**  
 "Square" Cut on North Curb Return of Driveway at SW Corner of Subject Property. Elev.=1286.76

UTILITIES SHOWN REPRESENT THE BEST INFORMATION AVAILABLE FOR DESIGN. ADDITIONAL UTILITIES MAY BE PRESENT ON THIS PROJECT. THE CONTRACTOR SHALL BE RESPONSIBLE FOR DETERMINING THE EXACT LOCATION, DEPTH AND SIZE OF ALL UNDERGROUND UTILITIES PRIOR TO CONSTRUCTION. THE CONTRACTOR SHALL BE LIABLE FOR ANY DAMAGE CAUSED BY THE FAILURE TO DO SO.

**Storm Water Sewer Profile**



WEST PARK GARDENS  
**STORM WATER SEWER**  
 WICHITA, SEDGWICK COUNTY, KANSAS  
 PROJ. NO.: 20061452  
**CERTIFIED ENGINEERING DESIGN, P.A.**  
 810 WEST DOUGLAS, SUITE C  
 WICHITA, KANSAS 67203  
 PH.(316)262-8808 FAX.(316)262-1669

DESIGNED: HDF  
 DRAWN: JOT  
 CHECKED: HDF

SCALE: 1"=20'  
 DATE: 11-06  
 CED FILE: Larry Cook Base

SHEET 3  
 TOTAL 10

AS-BUILT 9-14-07  
 T.H.-CED