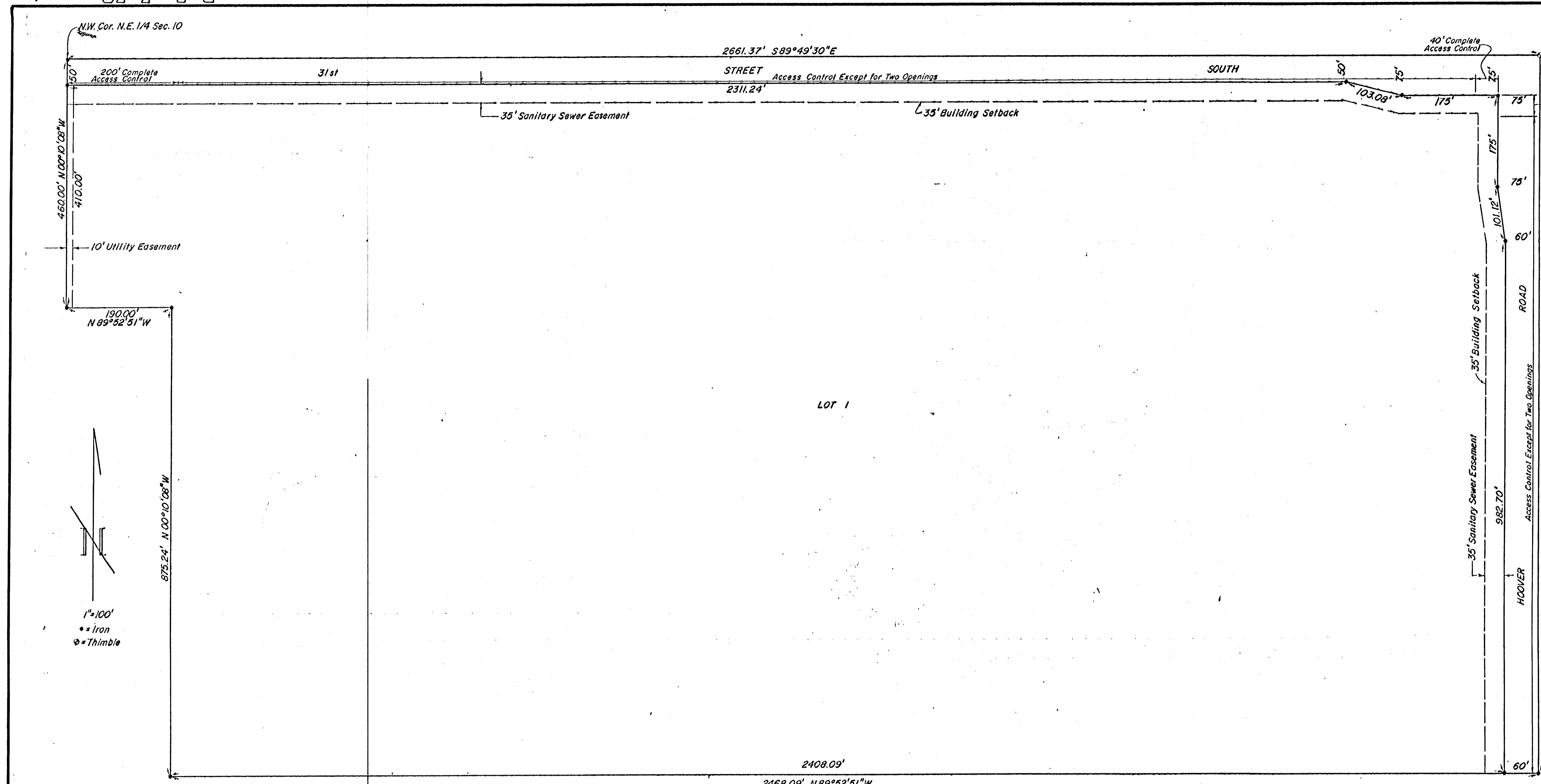


R-2 3-30



**J. I. CASE ADDITION
TO
SEDGWICK COUNTY, KANSAS**

STATE OF KANSAS, COUNTY OF SEDGWICK, SS:
This is to certify that this plat was re-
filed this 11th day of April, 1974, at
11:00 o'clock a. by Don C. Moehring II, for
the purpose of correcting typographical error
in the legal description in the Engineer's text
from "N.W. 1/4" to "N.E. 1/4" and also to correct
the bearing of the North-South segments of the
West property line from 00°08'10" to 00°10'08".

John Hale, Register of Deeds
Pearl B. Gilbert, Deputy



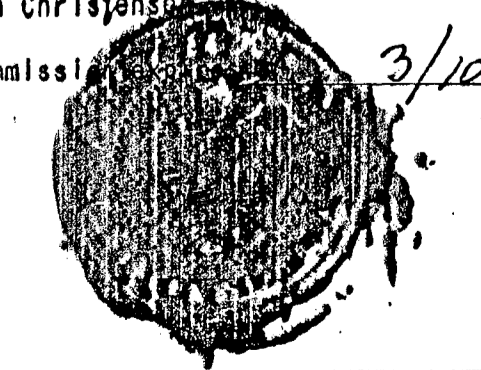
STATE OF KANSAS, COUNTY OF SEDGWICK, SS:
I, Don C. Moehring II, a Civil Engineer in said State and County,
do hereby certify that I have surveyed and platted "J.I. CASE ADDITION"
to Sedgwick County, Kansas, into a Lot, a Street, and a Road, the same
being accurately set forth in the accompanying plat and described as
follows: The North Half of the N.E. 1/4 of Sec. 10, T28S, R1W of the 6th
P.M., EXCEPT the South 875.24 feet of the West 190.0 feet thereof.

Don C. Moehring II Consulting Engineer
314 Brown Building Wichita, Kansas

Know all men by these presents that we the undersigned, property
owners of the land as above set forth in the Civil Engineer's Cer-
tificate, have caused the same to be surveyed and platted into a Lot,
a Street, and a Road, the same to be known as "J.I. CASE ADDITION" to
Sedgwick County, Kansas. Easements for the construction and main-
tenance of public utilities are hereby granted. All abutter's rights
of access to and from 31st Street South and Hoover Road, over and
across the North and East lines of Lot 1, are hereby granted to the
appropriate governing body, provided that Lot 1 shall have access to
31st Street South at two locations, except the West 200 feet and the
East 40 feet of Lot 1, and to Hoover Road, except the North 40 feet
of Lot 1. Location of said access to be determined by the appropriate
governing body.

J.I. Case Company, a Delaware Corporation
T.J. Guendel
David B. Falstad, Assistant Secretary

STATE OF WISCONSIN, COUNTY OF RACINE, SS:
Be it remembered that on this 7th day of January, 1974, before
me, a Notary Public in and for said State and County, came J.I. Case
Company, a Delaware corporation, by T.J. Guendel, President, and David
B. Falstad, Assistant Secretary, to me personally known to be the same
persons who executed the foregoing instrument of writing and duly ac-
knowledged the execution of the same. In testimony whereof I have here-
unto set my hand and affixed my notarial seal the day and year above
written.
Gordon Christensen, Notary Public
My Commission expires 3/10/74



This plat of "J.I. CASE ADDITION" has been submitted to and approved
by the Wichita-Sedgwick County Metropolitan Area Planning Commission,
Wichita, Kansas, dated this 13th day of December, 1973.
Wichita-Sedgwick County Metropolitan Area Planning Commission
Marjorie Taylor, Chairman
Robert A. Lakin, Secretary

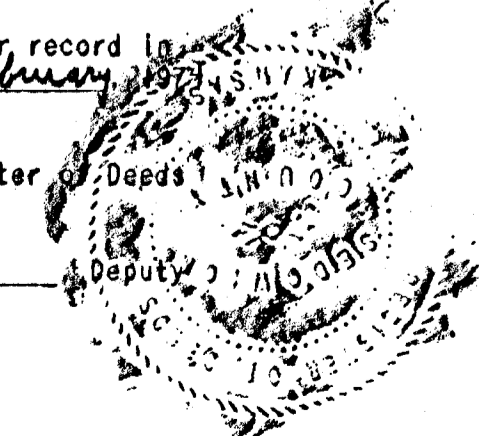
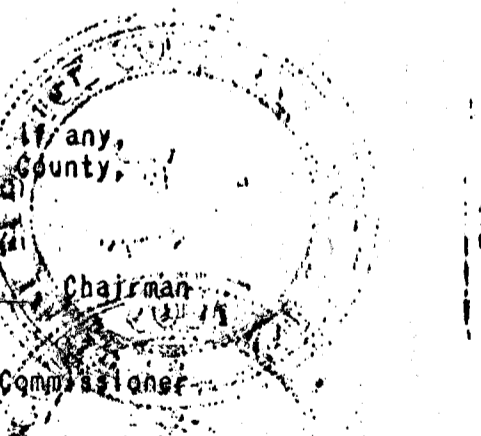
This plat approved and all dedications hereon, if any, accepted by
the City Commission of the City of Wichita, Kansas, this 22nd day of
January, 1974.
James M. Donnell, Mayor
Ralph C. Eberly, City Clerk

Entered on transfer record this 8 day of July, 1974.
Marie Warden, County Clerk

This plat approved and all dedications shown hereon, if any,
accepted by the Board of County Commissioners of Sedgwick County,
Kansas, this 11th day of January, 1974.

ATTEST: Marie Warden, County Clerk

STATE OF KANSAS, COUNTY OF SEDGWICK, SS:
This is to certify that this instrument was filed for record in
the Register of Deeds Office at 9:00 on the 11th day of January, 1974,
A.M.
John Hale, Register of Deeds
Pearl B. Gilbert, Deputy



52
52

12 11 50 41