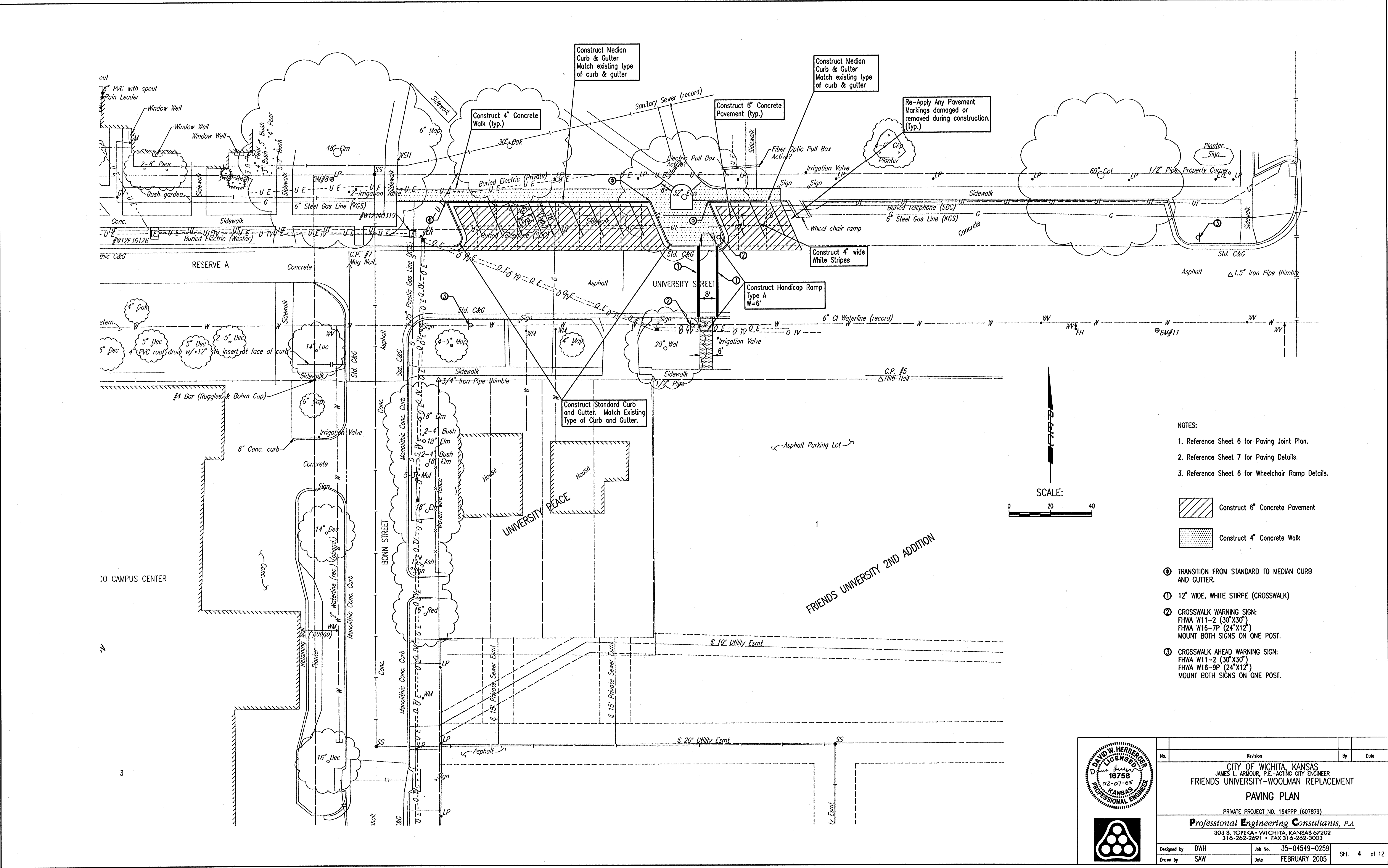
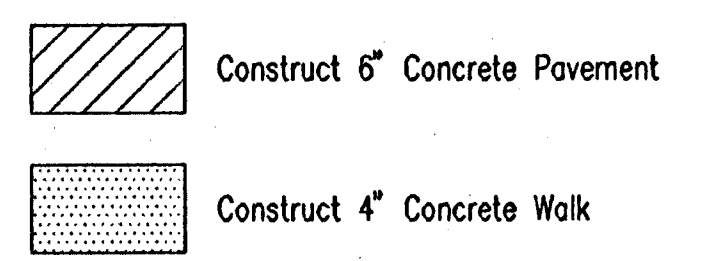


DSNR: DMH OPER. SAW SCALE: 1"=20.00
 G:\2004\04549\000\PPP\04549-000-C-Paving 02-07-2005 03:24:10 pm

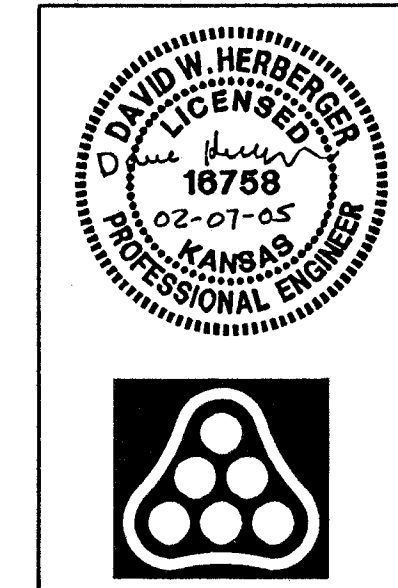


NOTES:

1. Reference Sheet 6 for Paving Joint Plan.
2. Reference Sheet 7 for Paving Details.
3. Reference Sheet 6 for Wheelchair Ramp Details.



- ⊙ TRANSITION FROM STANDARD TO MEDIAN CURB AND GUTTER.
- ① 12" WIDE, WHITE STRIPE (CROSSWALK)
- ② CROSSWALK WARNING SIGN:
 FHWA W11-2 (30"X30")
 FHWA W16-7P (24"X12")
 MOUNT BOTH SIGNS ON ONE POST.
- ③ CROSSWALK AHEAD WARNING SIGN:
 FHWA W11-2 (30"X30")
 FHWA W16-9P (24"X12")
 MOUNT BOTH SIGNS ON ONE POST.



No.	Revision	By	Date

CITY OF WICHITA, KANSAS
 JAMES L. ARMOUR, P.E. - ACTING CITY ENGINEER
 FRIENDS UNIVERSITY - WOOLMAN REPLACEMENT
PAVING PLAN
 PRIVATE PROJECT NO. 164PPP (607879)
Professional Engineering Consultants, P.A.
 303 S. TOPEKA - WICHITA, KANSAS 67202
 316-262-2691 • FAX 316-262-3003

Designed by	DWH	Job No.	35-04549-0259	Sht. 4 of 12
Drawn by	SAW	Date	FEBRUARY 2005	