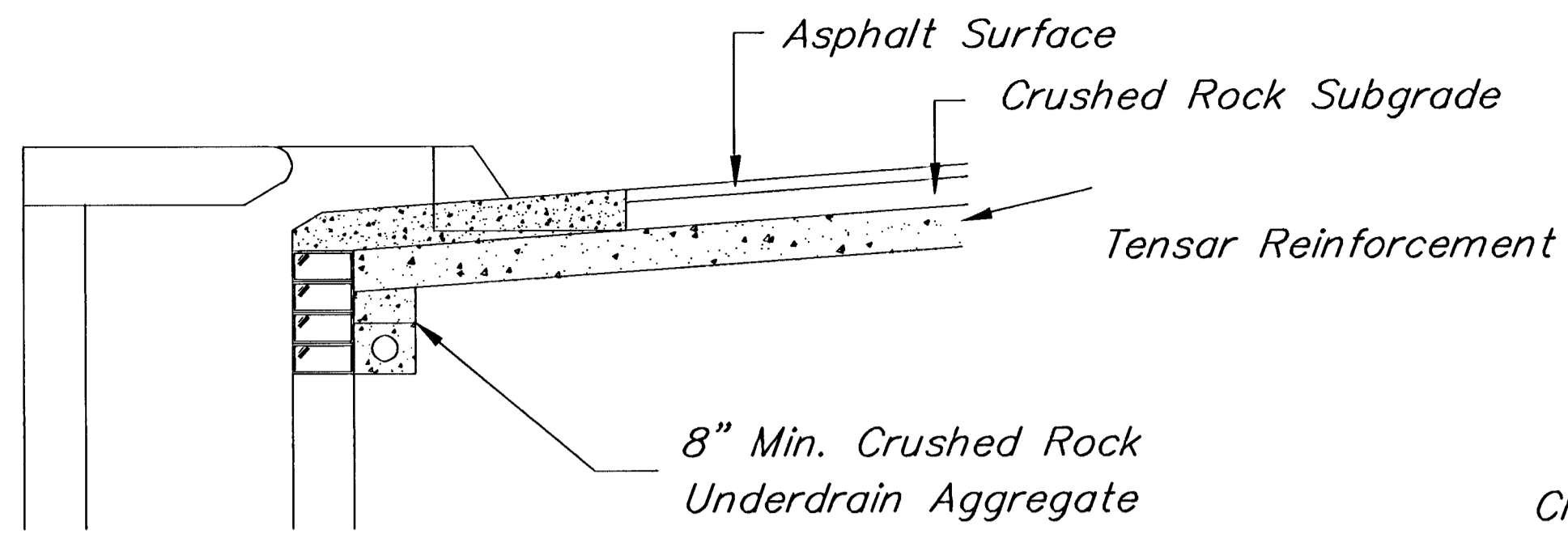


8" Min. Crushed Rock Underdrain Aggregate

(Min. 16 Perforations Per Lin. Ft. @ 1/4" Dia.)
Perforations To Be on Bottom Half

SECTION A-A

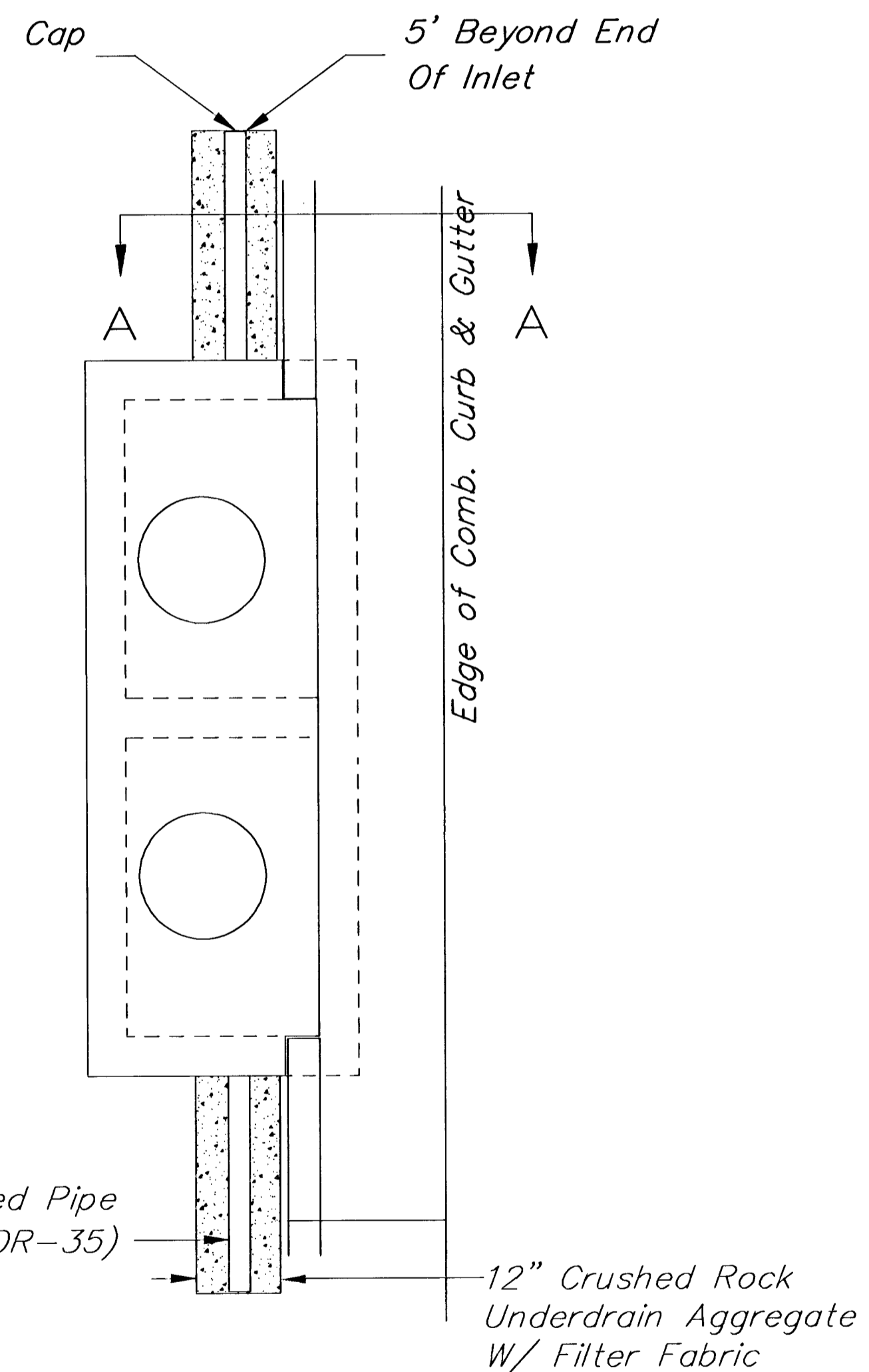


8" Min. Crushed Rock Underdrain Aggregate

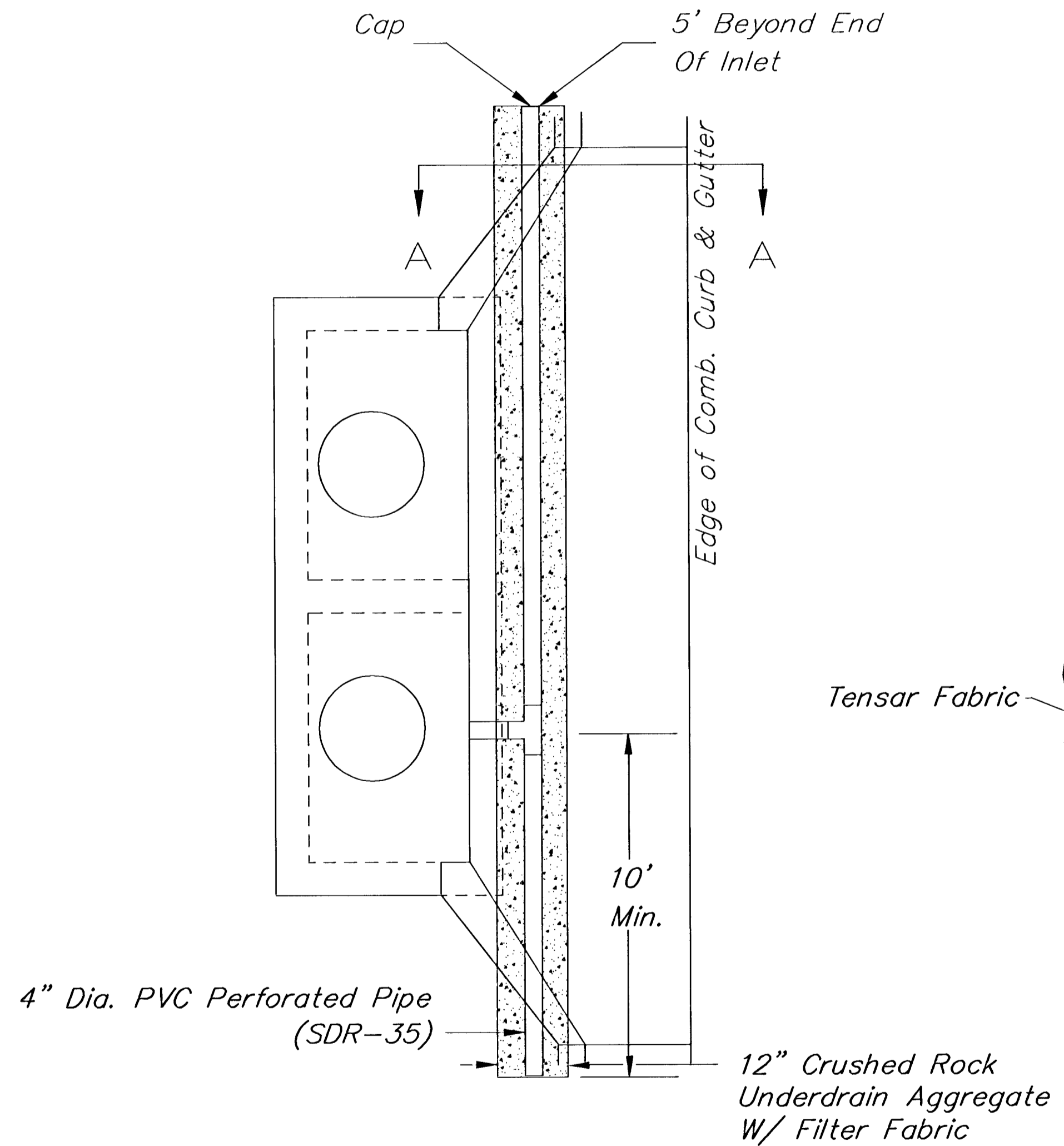
CRUSHED ROCK GRADATION REQUIREMENTS
Percent of Aggregate Retained

1 1/2"	0
3/4"	15-60
# 4	40-80
#40	74-92
P-200	4-12

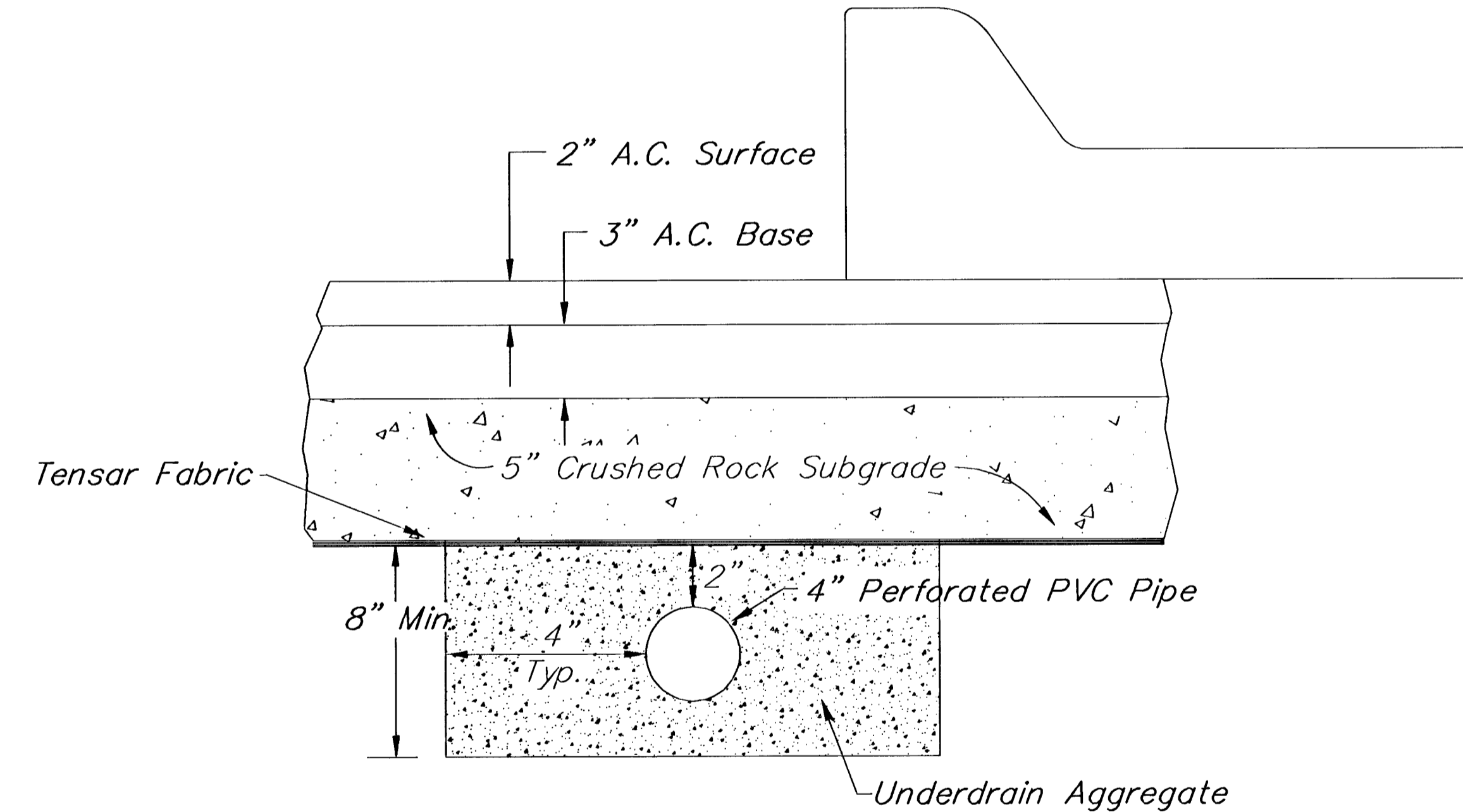
Rock Quality Shall Be The Same As Specified
For Coarse Aggregate For Asphalt Concrete Mixes.



Type 1 & 2 Inlet



Type 1-A Inlet

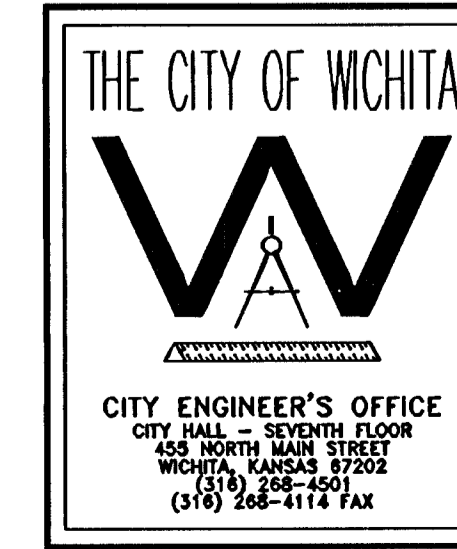


NOTE: Place 4" PVC Perforated Pipe at all drainage sump locations.
Cost of Underdrain System to be incidental to the Reinforced Crushed Rock Subgrade.

Y:\831\8314\base.dwg Thu Jun 23 11:39:05 2005 Steve Schmitt, Poe & Associates

PAVEMENT UNDERDRAIN DETAIL

PAVUDRDN1.DWG
REV. 11-22-00, MCG



THE CITY OF WICHITA	
CITY ENGINEER'S OFFICE CITY HALL - SEVENTH FLOOR 405 NORTH MAIN STREET WICHITA, KANSAS 67202 (316) 268-4200 (316) 268-4114 FAX	
PAVEMENT UNDERDRAIN DETAIL	
JAMES ARMOUR P.E. - CITY ENGINEER	
PROJECT NUMBER	INDEX CODE
DATE MAR 96	

FINAL

Designed By: T. Austin/S. Schmitt
Drawn By: S. Schmitt
Poe Job No.: 1831A
Date: June 2005

MEDITERRANEAN PLAZA ADDITION
PRIVATE STREET IMPROVEMENTS
PAVEMENT UNDERDRAIN DETAIL
CITY OF WICHITA, KANSAS
JAMES ARMOUR, P.E. - CITY ENGINEER
167 PPP (607879)

POE & ASSOCIATES, INC.
CONSULTING ENGINEERS
3940 E. Central, Suite 200 ■ Wichita, KS 67238-4242
Phone 316/685-4114 ■ FAX 316/685-4444

