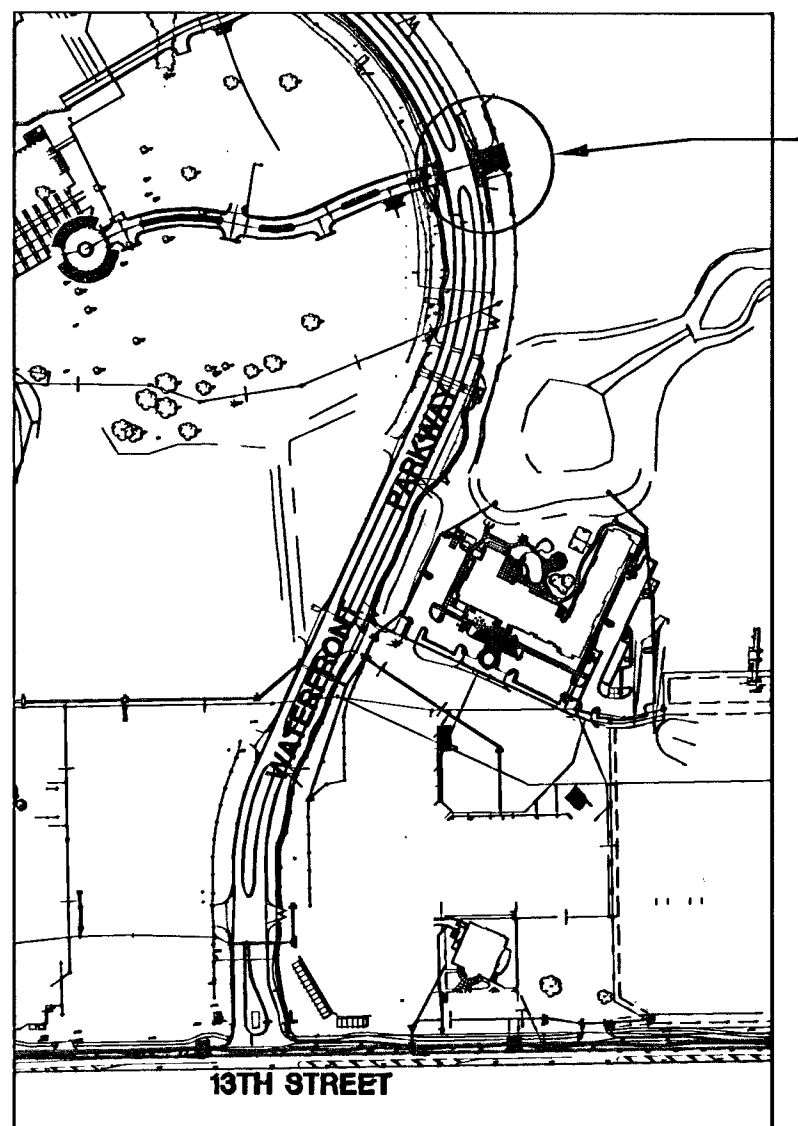
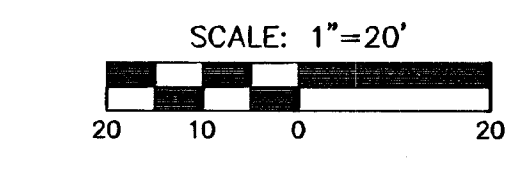
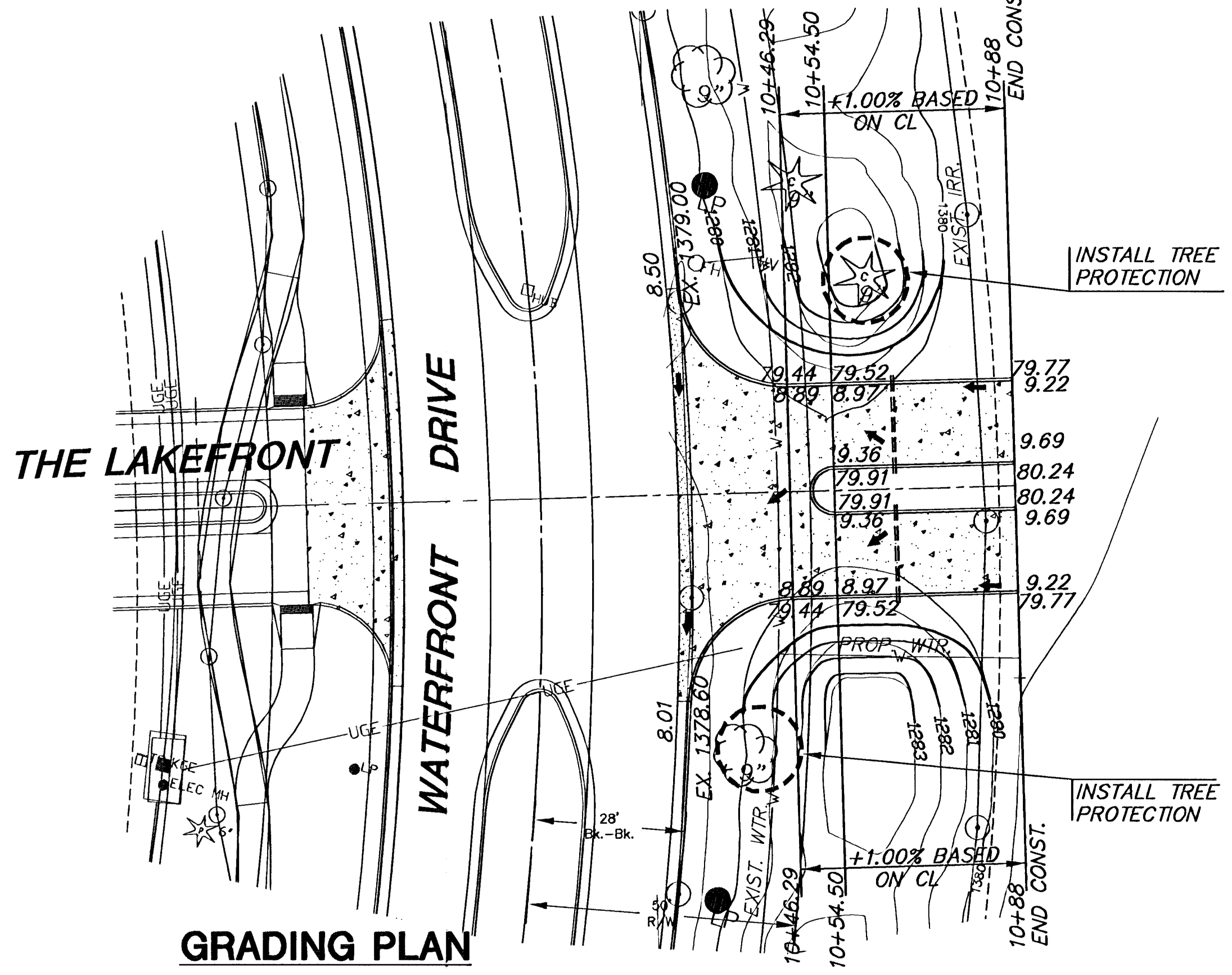
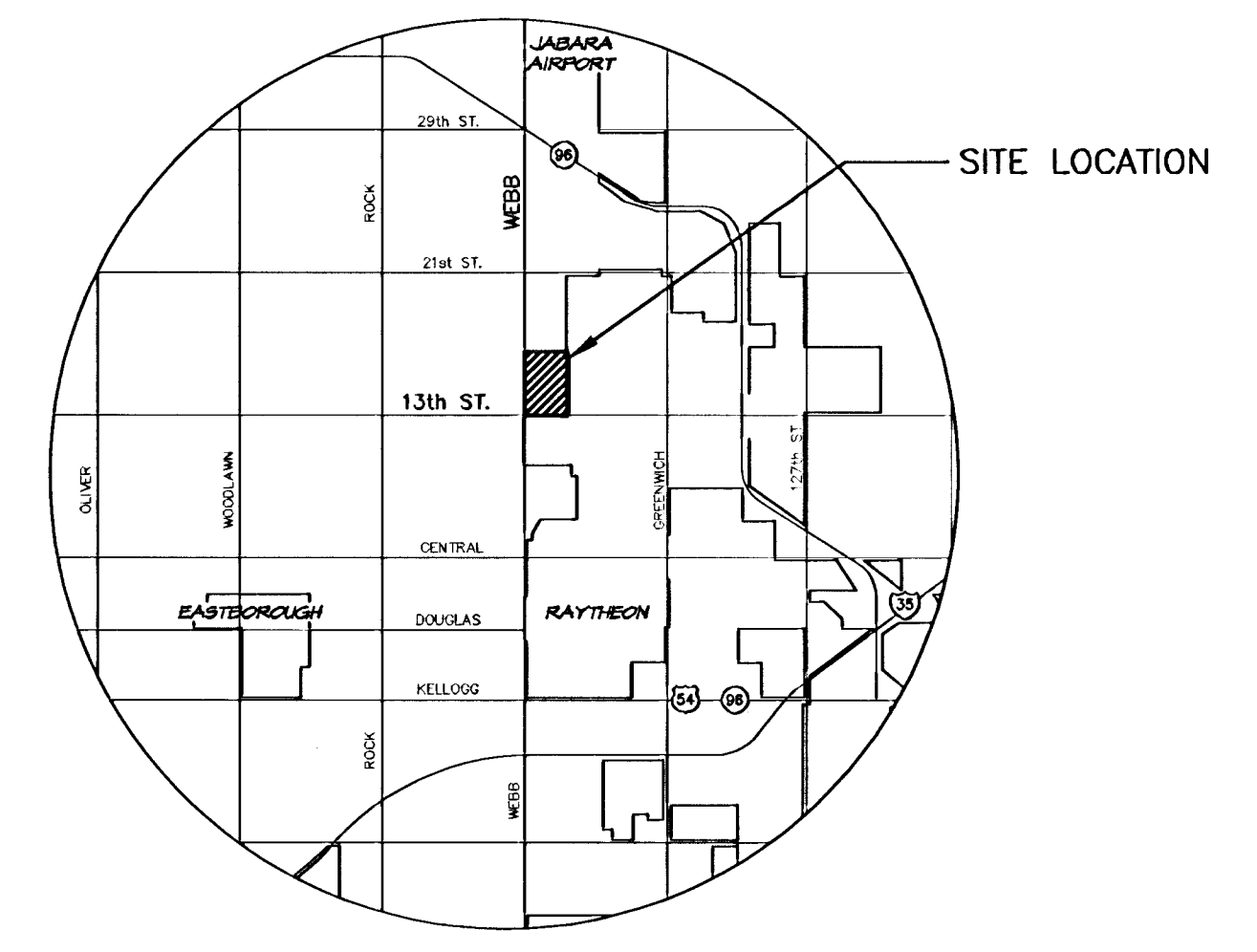


THE WATERFRONT ADDITION



GENERAL NOTES

- UNLESS SHOWN OR STATED OTHERWISE ON THESE DRAWINGS, MATERIALS AND CONSTRUCTION SHALL BE IN ACCORDANCE WITH CITY OF WICHITA CONCRETE PAVEMENT AND ASPHALTIC CONCRETE PAVEMENT SPECIFICATIONS.
- CONTRACTOR WILL BE REQUIRED TO PROVIDE A MINIMUM ADVANCE NOTICE OF SEVENTY-TWO (72) HOURS TO UTILITY COMPANIES PRIOR TO STARTING ANY EXCAVATION AS FOLLOWS:
KANSAS ONE-CALL 1-800-344-7233 OR 687-2470 (LOCAL WICHITA)
THE CONTRACTOR MUST NOTIFY THE FOLLOWING IN CASE OF AN EMERGENCY:
SBC (TELEPHONE) 800-870-8390
COX COMMUNICATIONS (CABLE) 262-0661
WESTAR (ELECTRIC) 383-8600
KANSAS GAS SERVICE (GAS) 832-3101
CITY OF WICHITA WATER & SEWER MAINT. 262-6000
AQUILA (GAS) 946-0096
- EXISTING UTILITIES AND THEIR LOCATIONS, AS SHOWN ON THE PLANS REPRESENT THE BEST INFORMATION OBTAINABLE FOR DESIGN. LOCATION INFORMATION HAS BEEN OBTAINED FROM THE VARIOUS UTILITY COMPANIES AND IS EITHER FROM RECORD DRAWINGS OR COMPANY PROVIDED FIELD LOCATIONS. THE PLAN LOCATIONS SHOWN ARE NOT GUARANTEED. ADDITIONAL EXISTING UTILITIES MAY ALSO BE ENCOUNTERED.
- RUBBLE FROM THE REMOVAL OF MISCELLANEOUS STRUCTURES AND EXCESS EXCAVATION WHICH IS TO BE WASTED SHALL BE DISPOSED ON SITES TO BE PROVIDED BY THE CONTRACTOR. THESE SITES SHALL BE APPROVED BY THE ENGINEER AS TO SUITABILITY, APPEARANCE AND SITE LOCATION. LOCATIONS THAT, IN THE OPINION OF THE ENGINEER, WILL LEAVE AN UNSIGHTLY APPEARANCE WILL NOT BE APPROVED. ALL DISPOSAL SITES MUST BE APPROVED BY THE KANSAS DEPARTMENT OF HEALTH AND ENVIRONMENT. MATERIAL EITHER STOCKPILED OR DISPOSED IN A FLOOD PLAIN WOULD REQUIRE A KANSAS STATE BOARD OF AGRICULTURE PERMIT. ANY MATERIAL DUMPED IN WATERS OF THE UNITED STATES OR WETLANDS IS SUBJECT TO U.S. CORPS OF ENGINEERS PERMITTING REGULATIONS. ANY MATERIAL BURIED OR STOCKPILED BEYOND APPROVED CONSTRUCTION LIMITS WOULD REQUIRE ADDITIONAL ARCHAEOLOGICAL INVESTIGATIONS UNLESS BURIED IN A PREVIOUSLY APPROVED BORROW LOCATION.
- A SAW CUT OF AT LEAST ONE-HALF THE DEPTH OF THE EXISTING SURFACE COURSES OR ONE-FOURTH THE DEPTH OF THE EXISTING TOTAL PAVEMENT THICKNESS SHALL BE PROVIDED AT LOCATIONS WHERE PROPOSED CONSTRUCTION ABUTS AN EXISTING SURFACE OR PAVEMENT FOR WHICH PARTIAL REMOVAL OF THAT SURFACE OR PAVEMENT IS REQUIRED. SAW JOINT TO FACILITATE REMOVAL WITHIN THREE (3) FEET OF EXISTING JOINTS WILL NOT BE PERMITTED AND FOR SUCH INSTANCES THE LIMITS OF REMOVAL SHALL EXTEND TO THE EXISTING JOINT. SUCH SAW CUTS WILL NOT BE PAID FOR DIRECTLY AND THIS COST SHALL BE CONSIDERED AS SUBSIDIARY TO THE REMOVAL OF SURFACE OR PAVEMENT.
- CONTRACTOR SHALL RESOD ALL DISTURBED AREAS.
- EQUIPMENT AND CONSTRUCTION MATERIALS SHALL REMAIN OUT OF AND AWAY FROM TREE DRIP LINES SO AS NOT TO COMPACT THE ROOT ZONE OR DAMAGE THE TREE.
- IT IS ANTICIPATED THAT THE GRADING FOR PAVEMENT CONSTRUCTION WILL INTERFERE WITH IRRIGATION LINES AND SPRINKLER HEADS WITHIN THE LANDSCAPING EASEMENT ADJACENT TO WATERFRONT PARKWAY. THE CONTRACTOR SHALL COORDINATE WITH ANDY VEATCH AT LAWN SPRINKLER SERVICES (316) 303-1200 - REGARDING REMOVAL AND REPLACEMENT OF SPRINKLER HEADS AND LINES. REMOVAL AND REPLACEMENT OF ALL IRRIGATION LINES, HEADS AND APPURTENANCES SHALL BE THE RESPONSIBILITY OF THE CONTRACTOR AND SHALL BE INCLUDED IN THE CONTRACT PRICE.



APPROVED AS NOTED
BY CITY ENGINEER OF WICHITA,
BY WICHITA WATER & SEWER DEPARTMENT,
& BY WICHITA FIRE DEPARTMENT
VRH 9/28/05

NOTE TO CONTRACTORS

Public Property:
Inspection and testing for the waterline is to be provided by a Licensed Consulting Engineering Firm under contract with the Owner/Developer. Said inspection to be in accordance with the City of Wichita Standard Construction Engineering Practices and certified by a Professional Engineer licensed in the state of Kansas. No work shall be performed in dedicated easements or public rights-of-way by the Contractor without such inspection, nor shall any work be commenced without written authorization by the City Engineer. All construction and materials shall comply with the City of Wichita Specifications and Standards (on file and available in the City Engineer's Office).

Private Property:
Installation and testing for the fire protection line is to be performed by a City of Wichita Licensed Fire Protection Contractor in accordance with the fire codes as adopted by the City of Wichita. All materials and construction practices for the fire protection line shall comply with the fire codes as adopted by the City of Wichita (available from the City of Wichita Fire Department). The Contractor shall not commence work without notification to and approval of the Wichita Fire Department. Inspection of the fire protection line is to be provided by a licensed engineering firm under contract with the Owner/Developer and the Fire Department. The contractor shall not start work until the project inspector is assigned to the project and present on the site. Any work done without inspection will be required to be uncovered for inspection.

BENCHMARKS

- BM #1 BRASS DISC TO, S. SIDE PARKWAY @ 2ND INLET EAST OF BRIDGE. ELEV.=1375.01
- BM #2 T.I. CUT TO EAST END OF 4TH ISLAND ON PARKWAY EAST OF WEBB ROAD. ELEV.=1382.22
- BM #3 BRASS DISC TO WEST SIDE OF PARKWAY @ INLET/BRIDGE NEAR NE COR. LOT 5, BLK. 1 WATERFRONT ADDITION. ELEV.=1376.81

LEGEND

- DIRECTION OF FLOW
- 79.77 9.22 PROPOSED SPOT ELEVATION
- PAVEMENT REMOVAL
- 6" SLEEVES
- TREE PROTECTION

NOTE: ELEVATIONS SHOWN ARE USGS DATUM

CONTRACTOR SHALL VERIFY LOCATION AND DEPTH OF EXISTING UTILITIES PRIOR TO CONSTRUCTION.

CONTRACTOR SHALL GRADE & SLOPE ALL PROPOSED DRIVES TO DRAIN.

project completed but no as-built information



9/27/05

PRIVATE PAVING PROJECT
188PPS (607879)



THE WATERFRONT ADDITION PRIVATE DRIVE PROJECT NAME		
PRIVATE PAVING PLANS SHEET TITLE		
MKEC DESIGN BY:	BFL/DAC DRAWN BY:	SRS CHECKED BY:
SEPT. 2005 DATE	02014 JOB NO.	1 / 2 SHEET/OF

18 01 01 023

14-01-01-28