

STORM SEWER TO SERVE Claremont Apartments Lot 1, Block 6, Quail Meadows 1778 PPS (607861) CITY OF WICHITA, KANSAS Jim Armour, P.E., City Engineer

INDEX OF SHEETS

1	Cover Sheet
2	Plan and Profile Sheets
3	Detail

GENERAL NOTES

1. Contractor will be required to provide notice to utility companies a minimum of twenty-four (24) hours prior to any excavation, as follows:

Kansas One-Call	687-2470
-----------------	----------

The Contractor must notify the following in case of an emergency:

Cox Communications	262-4270
or	263-2061
Westar Energy/	
Kansas Gas & Electric Company	1-888-482-4950
Southwestern Bell Telephone Company	1-571-2611
City of Wichita Water Department	268-4908
City of Wichita Sewer Department	268-4071
Aquila Natural Gas	942-8811
or	1-800-303-0357

2. Exist. utilities and their locations, as shown on the plans, represent the best information obtainable for design. Location information has been obtained from the various utility companies and is either from company record drawings or company-provided field locations. The Contractor will be required to work around existing utilities which do not conflict with proposed construction.

3. The Contractor to verify utility locations prior to construction of this project.

4. Utility service and installation shall be coordinated with the respective utility owners. Contacts are:

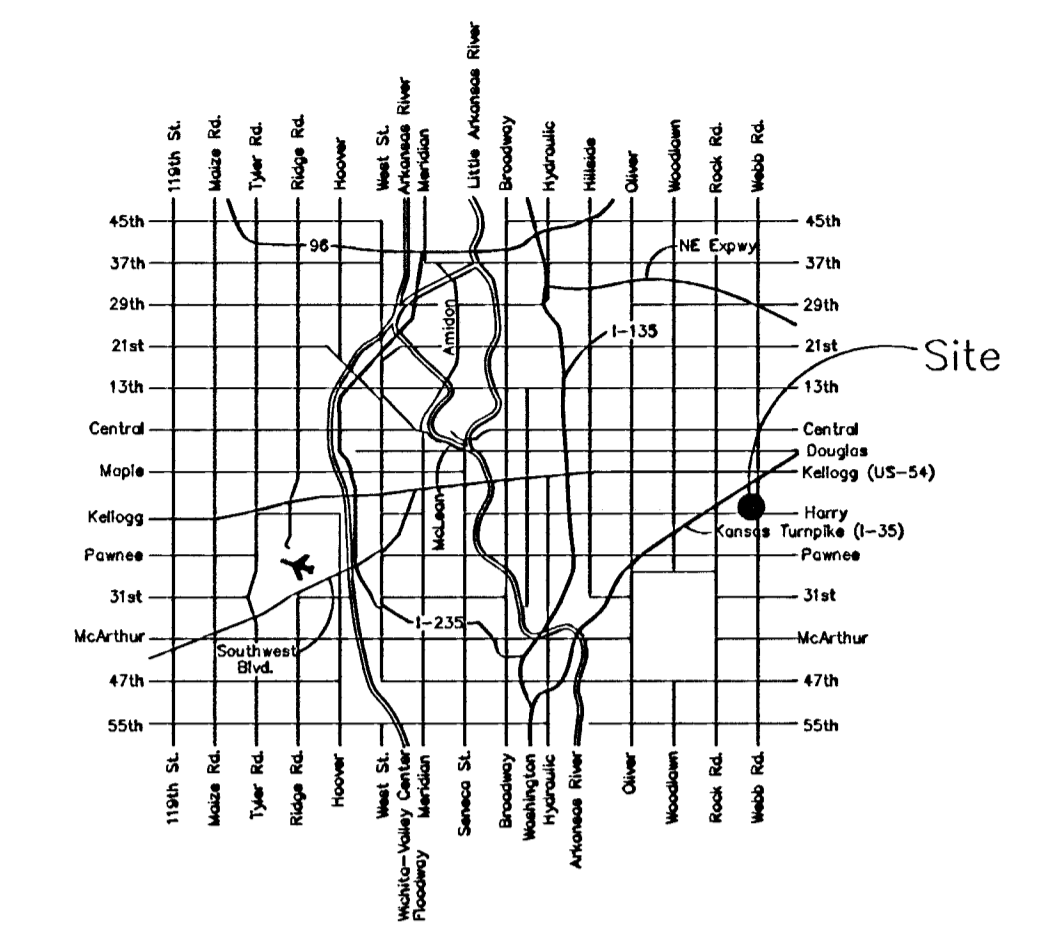
Kansas Gas Service	Charlene Pint	832-3121
Westar Energy	Miles Capps	261-6251
Aquila Networks	Calvin Briggs	942-8811
Wichita Water	Paul Bryant	268-4555
Southwestern Bell	Jim Toben	268-2759
Cox Communications	Brian Ring	262-4270

5. All lawn/turf areas disturbed by construction of proposed improvements shall be restored with seed. All seeding work shall be in accordance with the City of Wichita standard specifications and the City of Wichita administrative regulation No. AR78 which governs cleanup and replacement following construction. All costs for this work shall be subsidiary to the lump sum price bid for "Site Restoration."

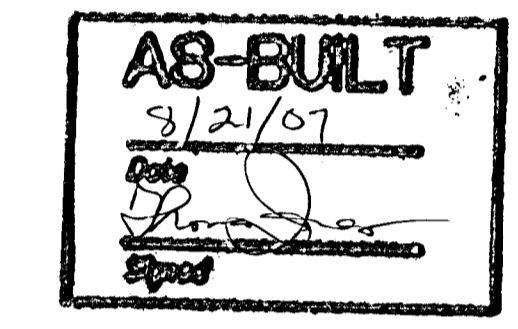
6. Traffic affected by the construction of this project shall be handled in accordance with the latest edition of the Manual on Uniform Traffic Control Devices.

7. All commercial signs to be moved by others prior to construction.

8. Properties within the project may have underground irrigation systems (lawn sprinklers) which conflict with new construction. Contractor shall remove such components as needed during construction of the project. The irrigation system shall be reinstalled in like kind before project completion. Any irrigation system modifications required because of project improvements shall be coordinated with the property owner. Portions of underground irrigation systems not in conflict with new construction shall be protected from damage and shall remain in place. All work related to underground irrigations/sprinklers shall be subsidiary to Site Restoration.



LOCATION MAP

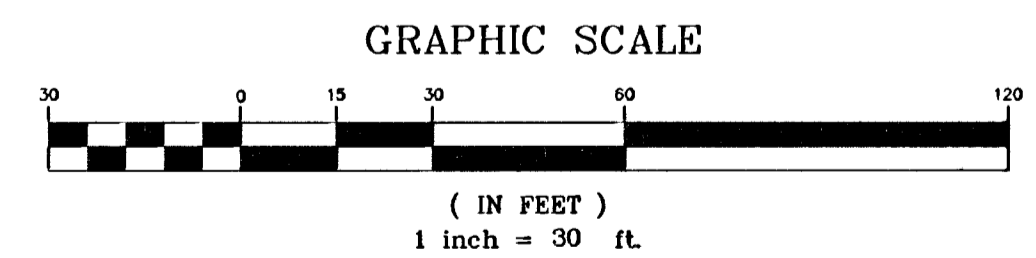
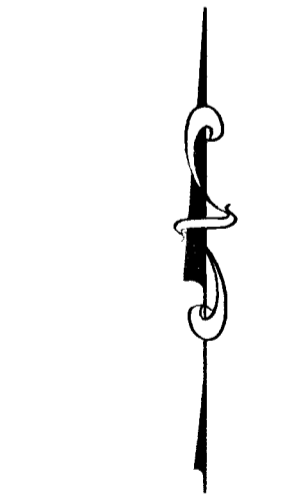
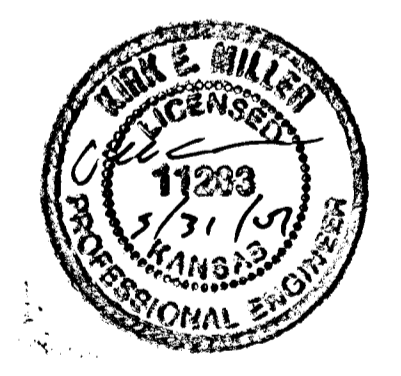
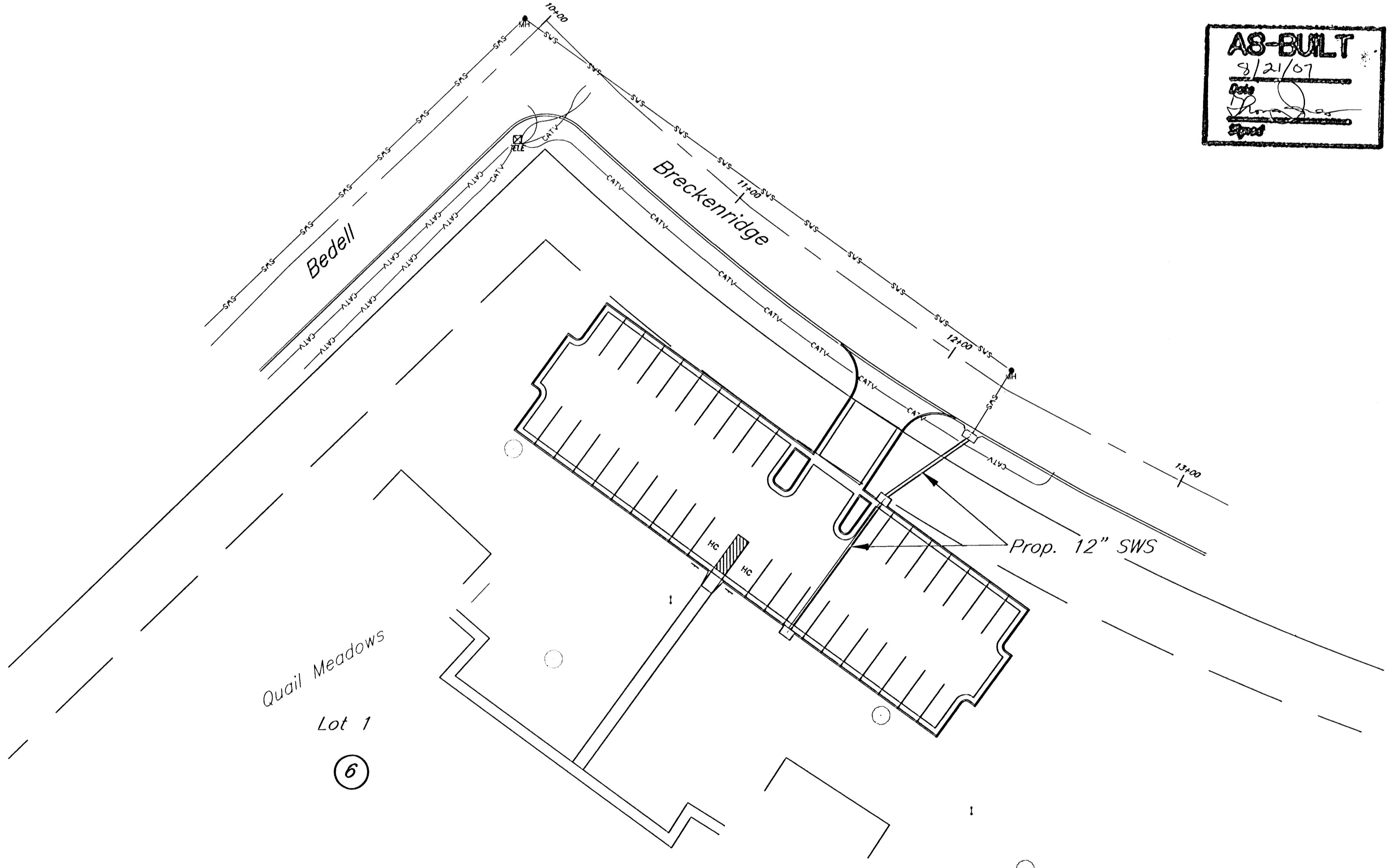


APPROVED AS NOTED

City Engineer Office VRH 6/4/07

NOTE TO CONTRACTORS

Installation, inspection and testing for this project is to be provided by a Licensed Consulting Engineering Firm under contract with the Owner/Developer. Said inspection to be in accordance with the City of Wichita standard construction engineering practices and certified by a Licensed Professional Engineer. No work shall be performed in dedicated easements or public right-of-way by the Contractor without such inspection nor shall any work be commenced without written authorization by the City Engineer. All Construction and Materials shall comply with the City of Wichita Specifications and Standards (on file and available in the City Engineer's Office).



Baseline
10+00 at Intersection of
Steeds Crossing and
Cheltenham Ct.

BENCHMARKS:
"X" Cut on Sidewalk at NE
Corner of Breckenridge
and Bedell.
Elev.=173.75

May, 2007

516 S. Market,
Wichita, KS 67202 316/264-0242