

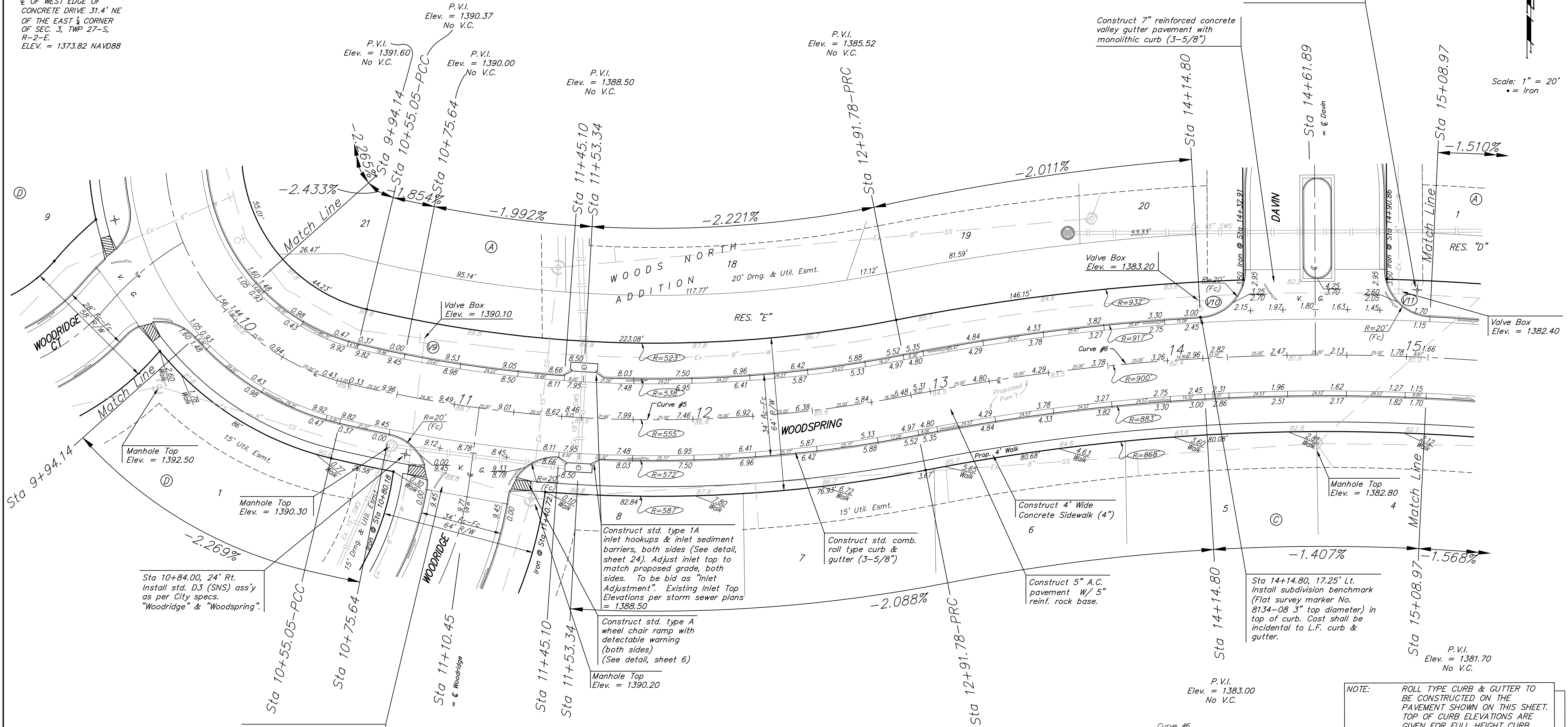
BENCHMARK:
CROSS CUT ON NORTH
END OF WEST HEADWALL
137.5' SOUTH & 12' WEST
OF THE INTERSECTION OF
29TH ST N & 127TH ST E.
ELEV. = 1382.45 NAVD88

Q OF WEST EDGE OF
CONCRETE DRIVE 31.4' NE
OF THE EAST 1/4 CORNER
OF SEC. 3, TWP 27-S,
R-2-E.
ELEV. = 1373.82 NAVD88

Sta 15+03.00, 28' Lt.
Install std. D3 (SNS) ass'y
as per City specs.
"Woodspring" & "Davin".

Construct 7" reinforced concrete
valley gutter pavement with
monolithic curb (3-5/8")

Scale: 1" = 20'
• = Iron



Curve #5
Curve Data Based on Centerline
Rad. = 555' Delta = 24° 26' 19" Tangent = 120.19'
Arc = 236.73' L.C. = 234.94' Def/Ft. = 3.09702 Min.

Station	Arc	FACE CHORD LENGTHS		Def.	T. Def.
		8' Lt.	8' Rt.		
10+55.05				0'00"00"	0'00"00"
10+75.64	20.59'	19.66'	21.52'	1'03'46"	1'03'46"
11+10.45	34.81'	33.24'	36.37'	1'47'48"	2'51'34"
11+45.10	34.65'	33.08'	36.20'	1'47'19"	4'38'53"
11+50.00	4.90'	4.68'	5.12'	0'15'10"	4'54'04"
11+75.00	25.00'	23.87'	26.12'	1'17'25"	7'28'55"
12+00.00	25.00'	23.87'	26.12'	1'17'25"	8'46'20"
12+25.00	25.00'	23.87'	26.12'	1'17'25"	10'03'46"
12+50.00	25.00'	23.87'	26.12'	1'17'25"	11'21'11"
12+75.00	25.00'	23.87'	26.12'	1'17'25"	12'13'09"
12+91.78	16.78'	16.02'	17.53'	0'51'58"	

Curve #6
Curve Data Based on Centerline
Rad. = 900' Delta = 18° 06' 20" Tangent = 143.40'
Arc = 284.4' L.C. = 283.22' Def/Ft. = 1.90987 Min.

Station	Arc	FACE CHORD LENGTHS		Def.	T. Def.
		8' Lt.	8' Rt.		
12+91.78				0'00'00"	0'00'00"
13+00.00	8.22'	8.45'	7.99'	0'15'42"	0'15'42"
13+25.00	25.00'	25.69'	24.30'	0'47'45"	1'03'27"
13+50.00	25.00'	25.69'	24.30'	0'47'45"	1'51'11"
13+75.00	25.00'	25.69'	24.30'	0'47'45"	2'38'56"
14+00.00	25.00'	25.69'	24.30'	0'47'45"	3'26'41"
14+14.80	14.80'	15.21'	14.39'	0'28'16"	3'54'57"
14+61.89	47.09'	48.39'	45.78'	1'29'56"	5'24'53"
15+08.97	47.08'	48.38'	45.77'	1'29'55"	6'54'48"
15+25.00	16.03'	16.48'	15.58'	0'30'37"	7'25'25"
15+50.00	25.00'	25.69'	24.30'	0'47'45"	8'13'10"
15+75.00	25.00'	25.69'	24.30'	0'47'45"	9'00'55"
15+76.18	1.18'	1.21'	1.15'	0'02'15"	9'03'10"

NOTE: ROLL TYPE CURB & GUTTER TO BE CONSTRUCTED ON THE PAVEMENT SHOWN ON THIS SHEET. TOP OF CURB ELEVATIONS ARE GIVEN FOR FULL HEIGHT CURB.

Baughman WOODS NORTH ADD. - PH. I
WOODSPRING
STA 9+94.14 TO STA 15+08.97

Baughman Company, P.A. 315 Ellis St. Wichita, KS 67211 P 316-262-7271 F 316-262-0149
ENGINEERING | SURVEYING | PLANNING | LANDSCAPE ARCHITECTURE

PROJECT NUMBER: 47284651
DESIGN: JAK
DRAWN: TMS

REVISIONS:
APPROVED: DATE 07/08

SCALE: Noted
SHEET: 10 OF 37

WoodsNorth/Str3 07-10-E964