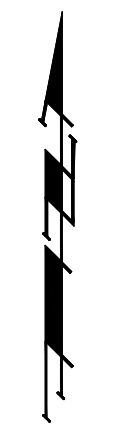
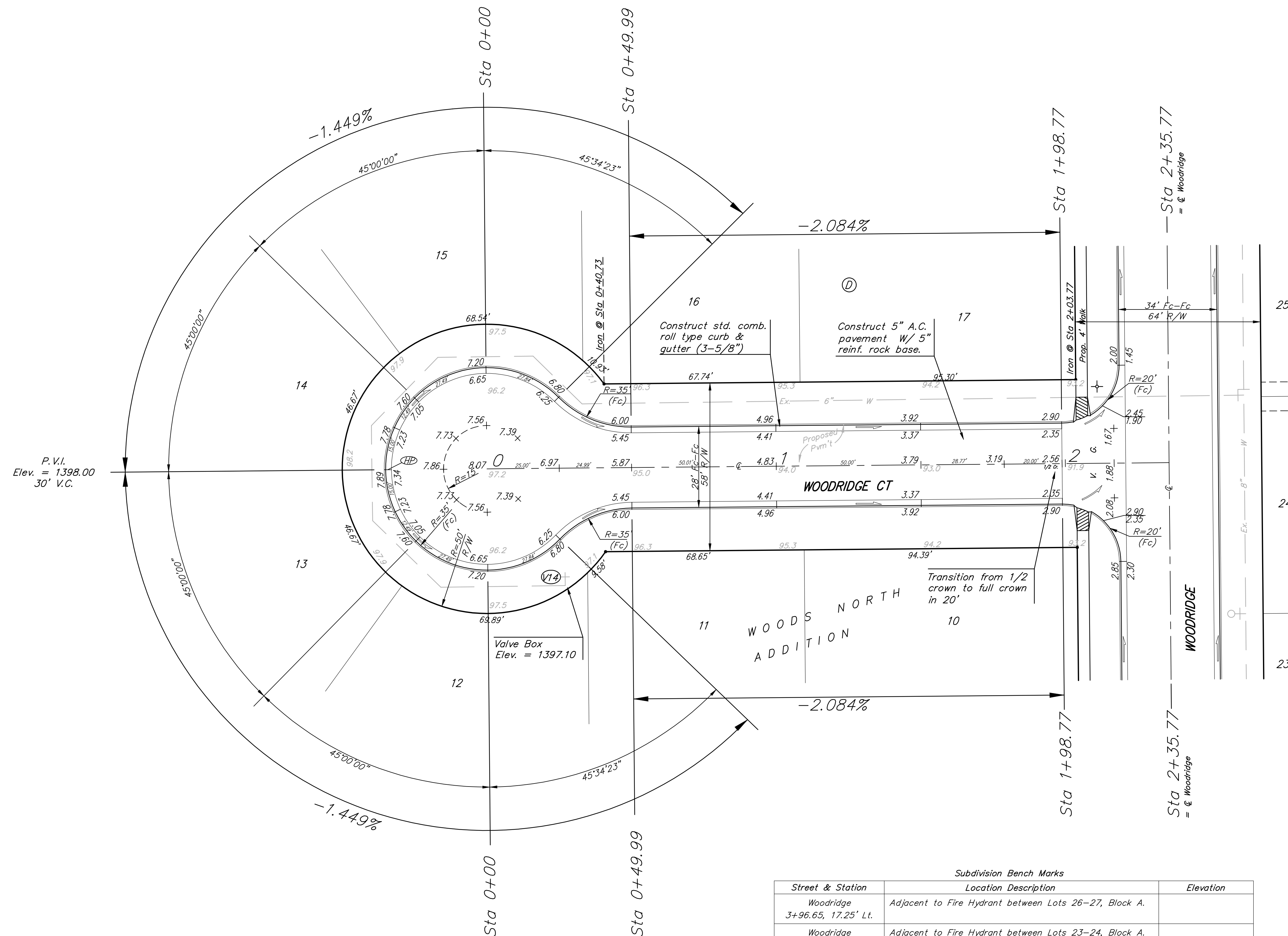


BENCHMARK:
 CROSS CUT ON NORTH
 END OF WEST HEADWALL
 137.5' SOUTH & 12' WEST
 OF THE INTERSECTION OF
 29TH ST N & 127TH ST E.
 ELEV. = 1382.45 NAVD88

Q OF WEST EDGE OF
 CONCRETE DRIVE 31.4' NE
 OF THE EAST 1/4 CORNER
 OF SEC. 3, TWP 27-S,
 R-2-E.
 ELEV. = 1373.82 NAVD88



Scale: 1" = 20'
 • = Iron



Subdivision Bench Marks

| Street & Station | Location Description | Elevation |
|--------------------------------------|---|-----------|
| Woodridge 3+96.65, 17.25' Lt. | Adjacent to Fire Hydrant between Lots 26-27, Block A. | |
| Woodridge 7+39.15, 17.25' Lt. | Adjacent to Fire Hydrant between Lots 23-24, Block A. | |
| Woodridge 9+70.43, 17.25' Lt. | Adjacent to Fire Hydrant in front of Lots 21, Block A. | |
| Woodspring 14+14.80, 17.25' Lt. | Adjacent to Fire Hydrant at W. End of W. Curb Return of Woodspring and Davin. | |
| Davin/Garnett 6+98.92, 15.25' Rt. | Adjacent to Fire Hydrant between Lots 10-11, Block A. | |

NOTE: ROLL TYPE CURB & GUTTER TO BE CONSTRUCTED ON THE PAVEMENT SHOWN ON THIS SHEET. TOP OF CURB ELEVATIONS ARE GIVEN FOR FULL HEIGHT CURB.

Baughman

ENGINEERING | SURVEYING | PLANNING | LANDSCAPE ARCHITECTURE

WOODS NORTH ADD. - PH. I

WOODRIDGE CT.

STA 0+00 TO STA 2+35.77

PROJECT NUMBER
47284651

DESIGN
JAK

APPROVED
TMS

DRAWN
TMS

DATE
07/08

REVISIONS:

SCALE
Noted

SHEET

13 OF 37

WoodNorth\Snr6

07-10-E964