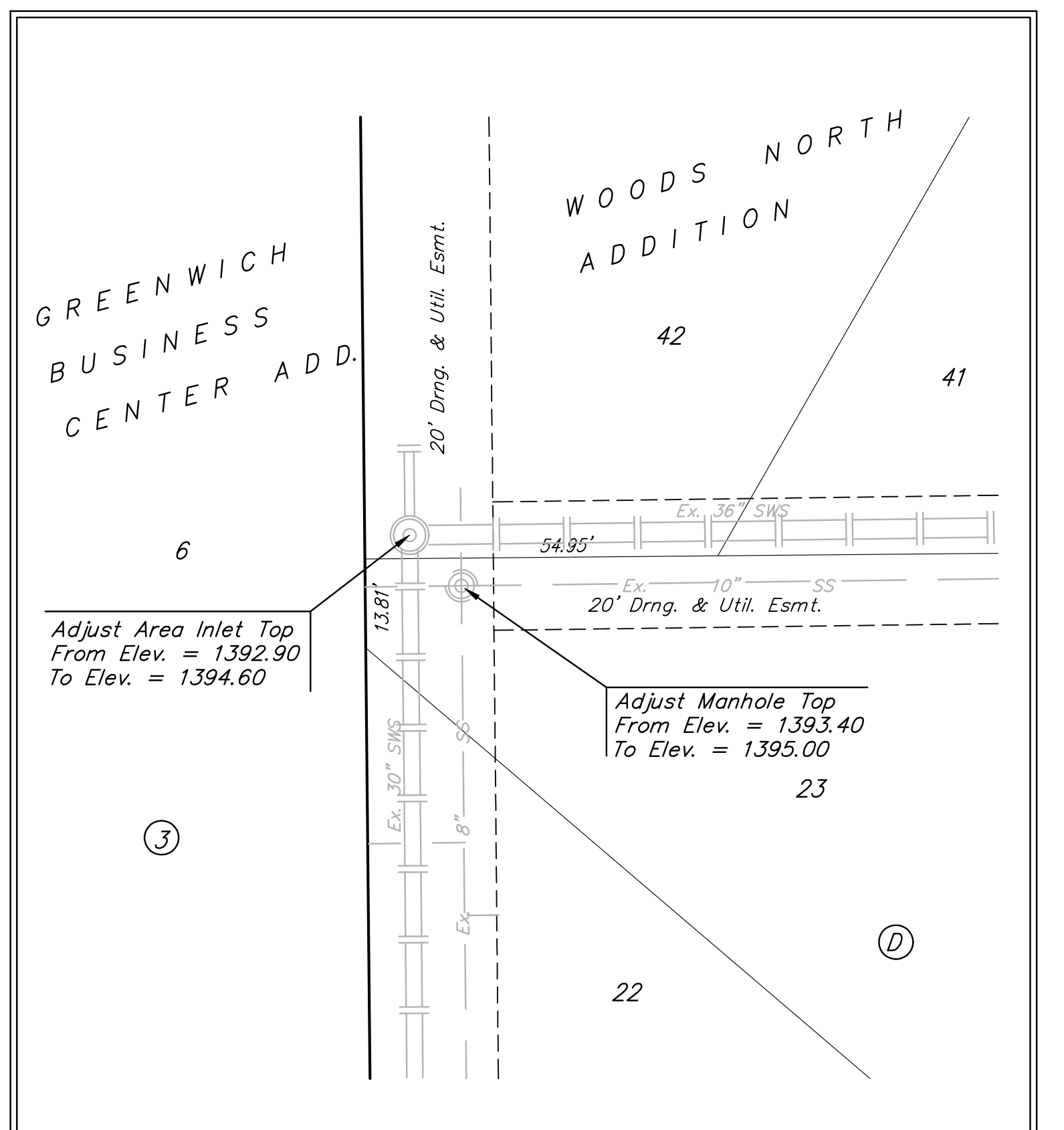
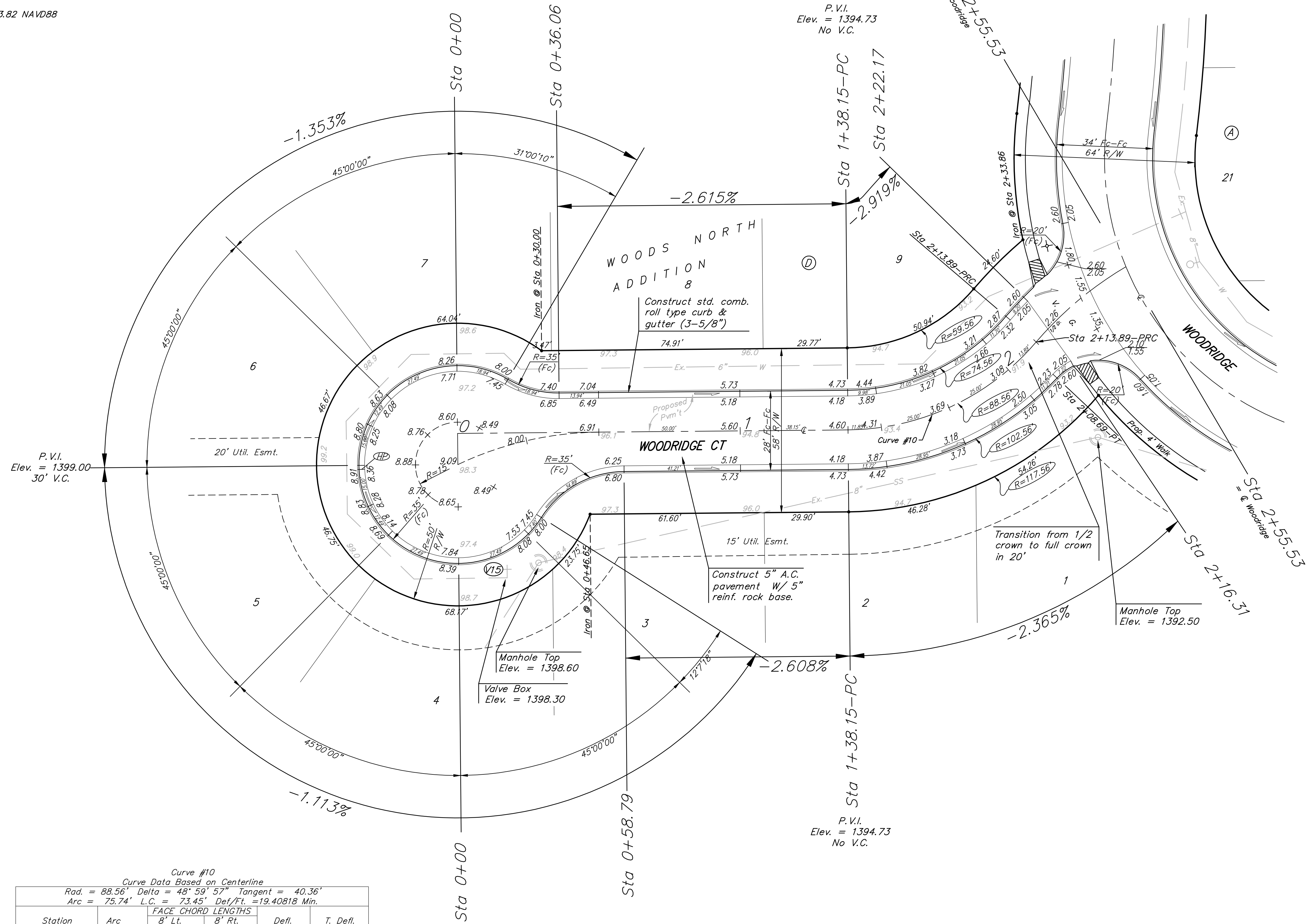
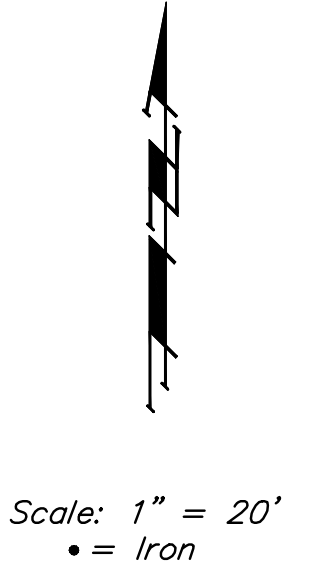


BENCHMARK:
 CROSS CUT ON NORTH
 END OF WEST HEADWALL
 137.5' SOUTH & 12' WEST
 OF THE INTERSECTION OF
 29TH ST N & 127TH ST E.
 ELEV. = 1382.45 NAVD88

Q OF WEST EDGE OF
 CONCRETE DRIVE 31.4' NE
 OF THE EAST 1/4 CORNER
 OF SEC. 3, TWP 27-S,
 R-2-E.
 ELEV. = 1373.82 NAVD88



NOTE: ROLL TYPE CURB & GUTTER TO BE CONSTRUCTED ON THE PAVEMENT SHOWN ON THIS SHEET. TOP OF CURB ELEVATIONS ARE GIVEN FOR FULL HEIGHT CURB.

Curve #10
 Curve Data Based on Centerline
 Rad. = 88.56' Delta = 48° 59' 57" Tangent = 40.36'
 Arc = 75.74' L.C. = 73.45' Def./Ft. = 19.40818 Min.

Station	Arc	FACE CHORD LENGTHS		Defl.	T. Defl.
		8' Lt.	8' Rt.		
1+38.15	-	-	-	0'00"00"	0'00"00"
1+50.00	11.85'	8.90'	14.78'	3'49"59"	3'49"59"
1+75.00	25.00'	18.73'	31.11'	8'05"12"	11'55"11"
2+00.00	25.00'	18.73'	31.11'	8'05"12"	20'00"24"
2+08.69	8.69'	6.53'	10.84'	2'48"39"	22'49"03"
2+13.89	5.20'	3.91'	6.49'	1'40"55"	24'29"58"

Baughman WOODS NORTH ADD. - PH. I
WOODRIDGE CT.
 STA 0+00 TO STA 2+55.53

Baughman Company, P.A. 315 Ellis St. Wichita, KS 67211 P 316-262-7271 F 316-262-0149
 ENGINEERING | SURVEYING | PLANNING | LANDSCAPE ARCHITECTURE

PROJECT NUMBER 47284651	DESIGN JAK	DRAWN TMS
REVISIONS:	APPROVED	DATE 07/08
	SCALE Noted	SHEET 14 OF 37

WoodsNorth/Sst7 07-10-E964