

BENCHMARK:
CROSS CUT ON NORTH
END OF WEST HEADWALL
137.5' SOUTH & 12' WEST
OF THE INTERSECTION OF
29TH ST N & 127TH ST E.
ELEV. = 1382.45 NAVD88

Q OF WEST EDGE OF
CONCRETE DRIVE 31.4' NE
OF THE EAST 1/4 CORNER
OF SEC. 3, TWP 27-S,
R-2-E.
ELEV. = 1373.82 NAVD88

P.V.I.
Elev. = 1388.70
131' V.C.

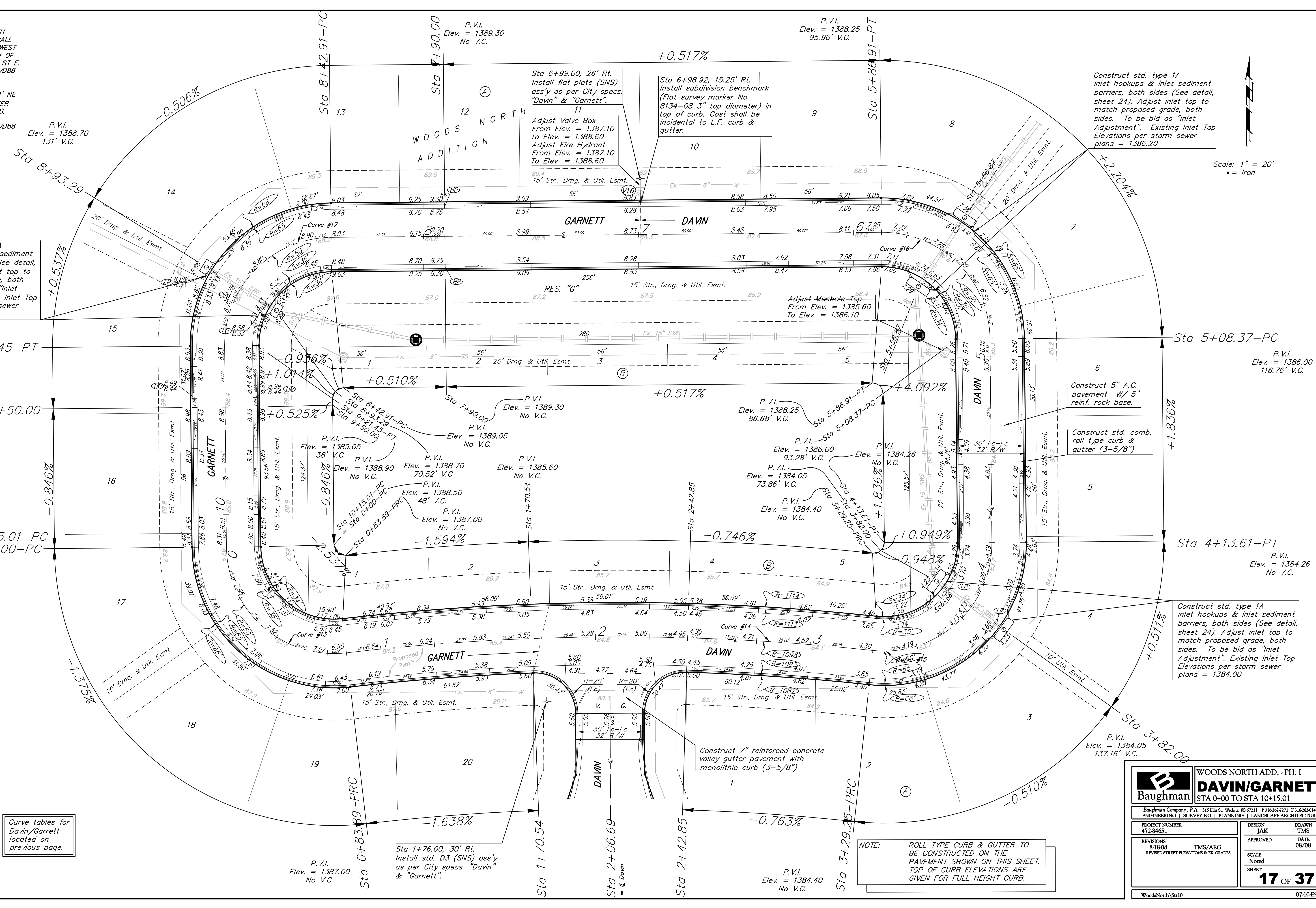
Construct std. type 1A
inlet hookups & inlet sediment
barriers, both sides (See detail,
sheet 24). Adjust inlet top
to match proposed grade, both
sides. To be bid as "Inlet
Adjustment". Existing Inlet Top
Elevations per storm sewer
plans = 1386.80

Sta 9+21.45-PT

P.V.I.
Elev. = 1389.05
38' V.C.

Sta 10+15.01-PC
= Sta 0+00-PC
P.V.I.
Elev. = 1388.50
130' V.C.

Curve tables for
Davlin/Garrett
located on
previous page.



Construct std. type 1A
inlet hookups & inlet sediment
barriers, both sides (See detail,
sheet 24). Adjust inlet top to
match proposed grade, both
sides. To be bid as "Inlet
Adjustment". Existing Inlet Top
Elevations per storm sewer
plans = 1386.20

Scale: 1" = 20'
• = Iron

Sta 5+08.37-PC
P.V.I.
Elev. = 1386.00
116.76' V.C.

Construct 5" A.C.
pavement W/ 5"
rein. rock base.

Construct std. comb.
roll type curb &
gutter (3-5/8")

Sta 4+13.61-PT
P.V.I.
Elev. = 1384.26
No V.C.

Construct std. type 1A
inlet hookups & inlet sediment
barriers, both sides (See detail,
sheet 24). Adjust inlet top to
match proposed grade, both
sides. To be bid as "Inlet
Adjustment". Existing Inlet Top
Elevations per storm sewer
plans = 1384.00

P.V.I.
Elev. = 1384.05
137.16' V.C.

		WOODS NORTH ADD. - PH. I	
		DAVIN/GARNETT STA 0+00 TO STA 10+15.01	
<small>Baughman Company, P.A. 315 Ellis St. Wichita, KS 67211 P 316-262-7271 F 316-262-0149 ENGINEERING SURVEYING PLANNING LANDSCAPE ARCHITECTURE</small>			
PROJECT NUMBER 47284651	DESIGN JAK	DRAWN TMS	
REVISIONS 8-18-08 TMS/AEG REVISED STREET ELEVATIONS & EX. GRADES	APPROVED	DATE 08/08	
SCALE Noted		SHEET	
		17 OF 37	
WoodsNorth/Str10		07-10-E964	

NOTE:
ROLL TYPE CURB & GUTTER TO
BE CONSTRUCTED ON THE
PAVEMENT SHOWN ON THIS SHEET.
TOP OF CURB ELEVATIONS ARE
GIVEN FOR FULL HEIGHT CURB.