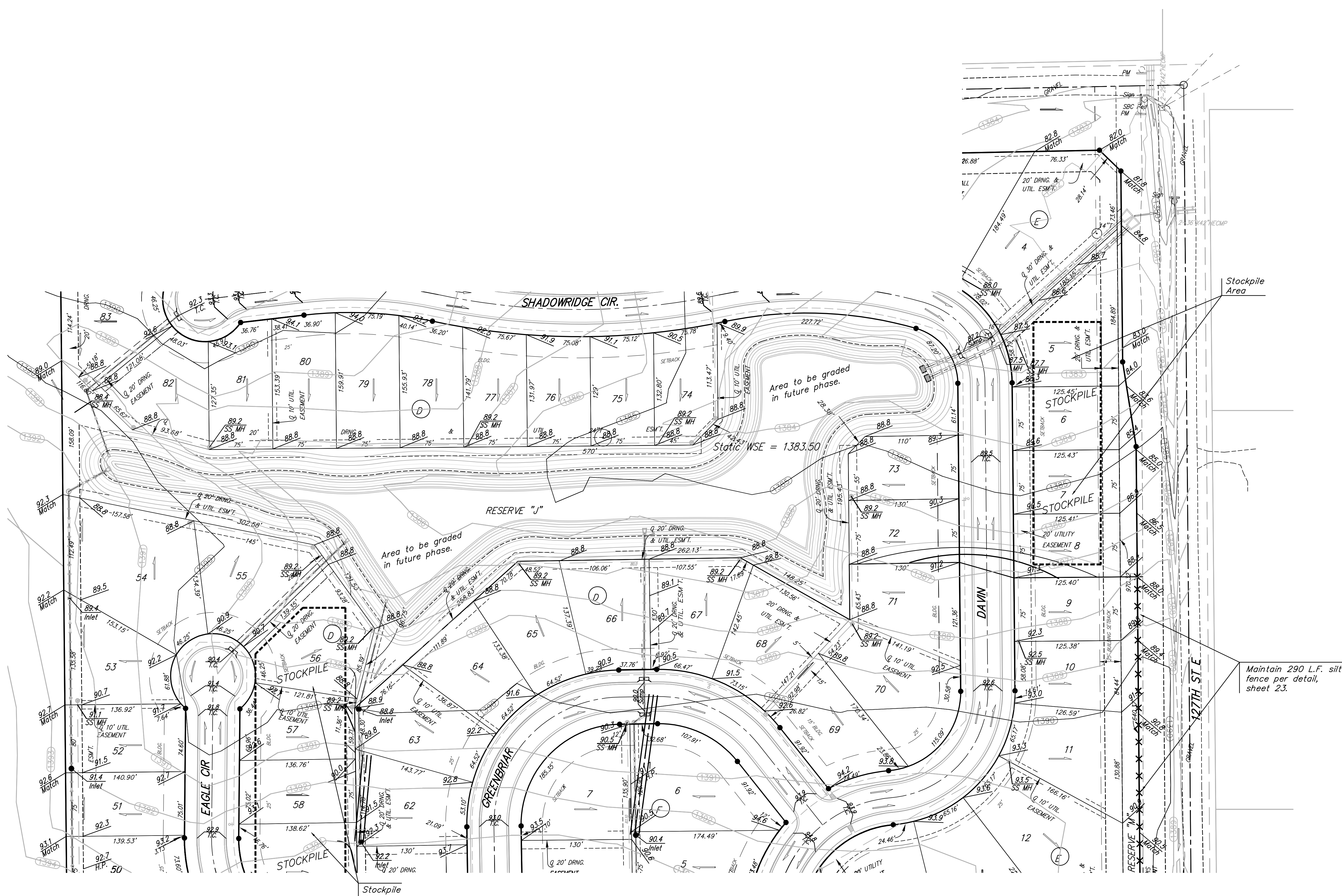


Scale: 1" = 60'



EROSION CONTROL PLAN LEGEND
(Maintenance Details Found in the SMP2 Plan)

- DROP INLET PROTECTION
- CURB INLET PROTECTION
- DITCH CHECKS
- SILT FENCING
- CUT-OFF TRENCH
- BACK OF CURB PROTECTION
- EROSION CONTROL MAT
- TEMPORARY DITCH

NO SCALE

EROSION CONTROL QUANTITIES:

EROSION CONTROL MEASURES TO BE INSTALLED:

- 1 EA. STRAW BALE BARRIERS
- 12 EA. CURB INLET BARRIERS
- 6,770 S.Y. BACK OF CURB EROSION CONTROL MAT

EXISTING EROSION CONTROL MEASURES TO BE MAINTAINED:*

- 1,427 L.F. SILT FENCE
- 19 EA. STRAW BALE BARRIERS
- 19 EA. DROP INLET BARRIERS
- 7,163 S.Y. EROSION CONTROL MAT
- 1,147 L.F. EROSION CONTROL BERM
- 2 EA. STABILIZED CONSTRUCTION ENTRANCE

* ALL EXISTING BMPs INCLUDING CONSTRUCTION ENTRANCE, SEDIMENT BARRIERS, SILT FENCE, CUT-OFF TRENCH, AND EROSION CONTROL MAT SHALL BE MAINTAINED AND REPAIRED IF NECESSARY.

Maintain 290 L.F. silt fence per detail, sheet 23.

	WOODS NORTH ADD. - PH. I	
	EROSION CONTROL PLAN WICHITA, KANSAS	
<small>Baughman Company, P.A. 315 Ellis St. Wichita, KS 67211 P 316-262-7271 F 316-262-0149 ENGINEERING SURVEYING PLANNING LANDSCAPE ARCHITECTURE</small>		
PROJECT NUMBER 472-84651	DESIGN ATD	DRAWN TMS
REVISIONS:	APPROVED	DATE 07/08
	SCALE Noted	
	SHEET	20 OF 37
WoodsNorth\SitEPlan3		07-10-E964