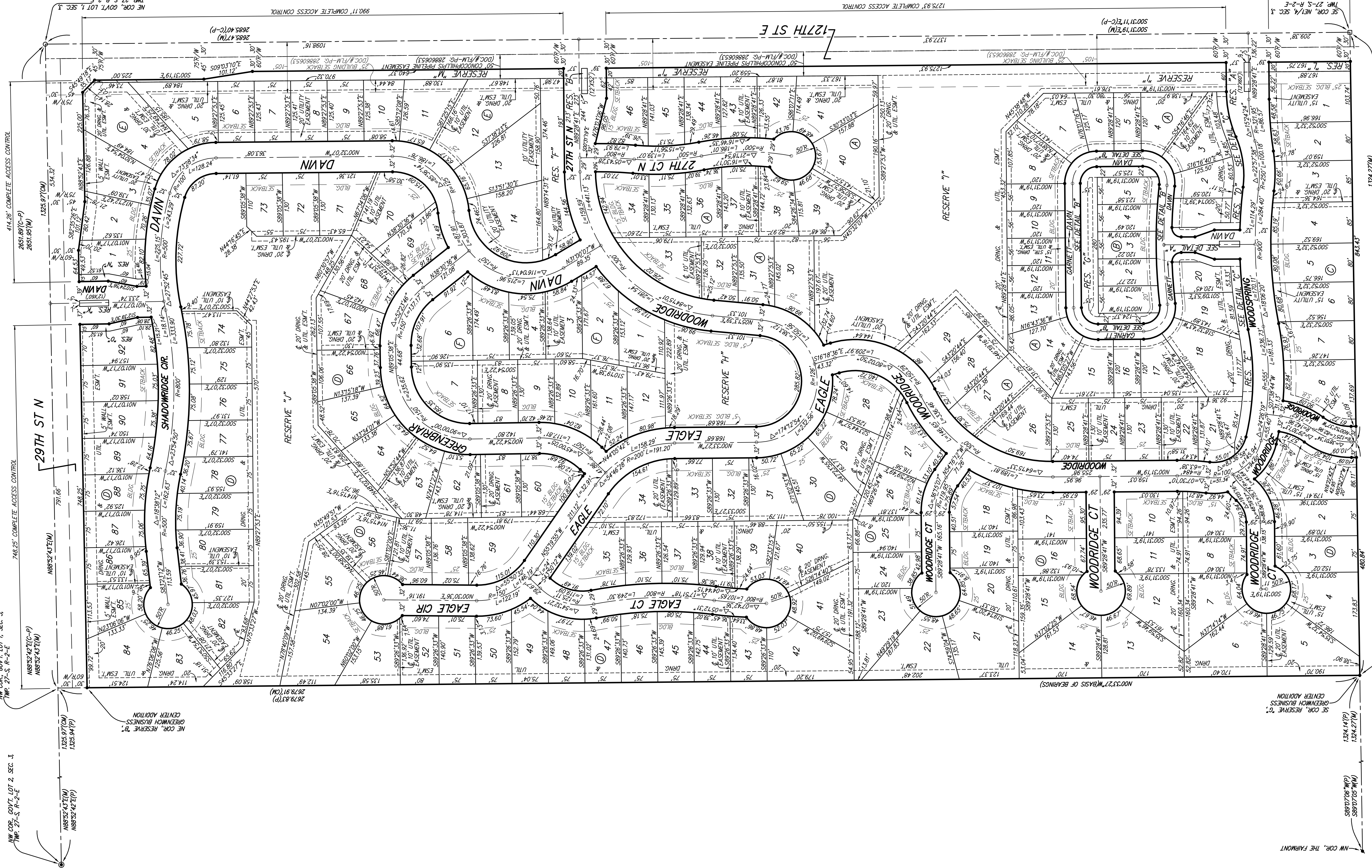


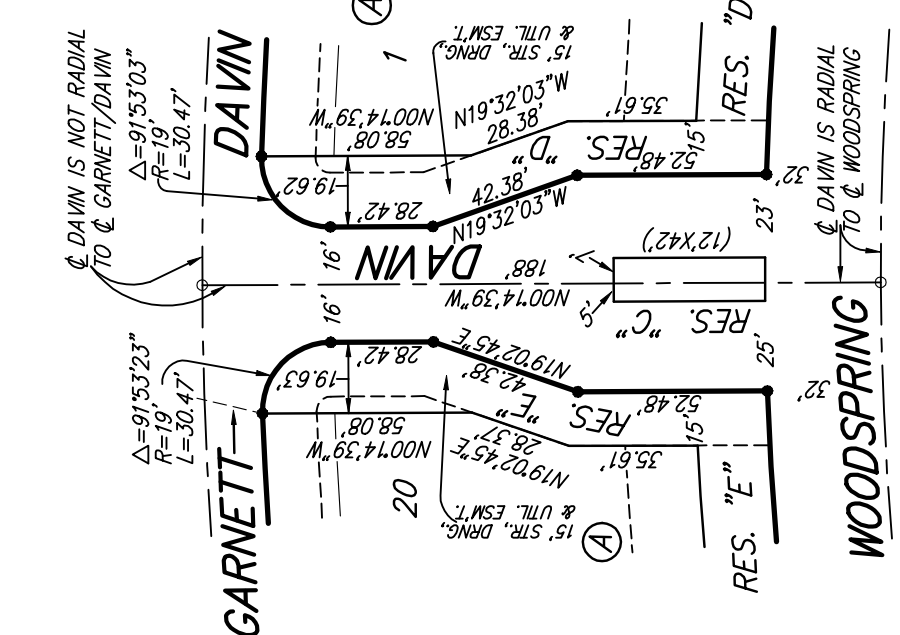
WOODS NORTH ADDITION WICHITA, SEDGWICK COUNTY, KANSAS



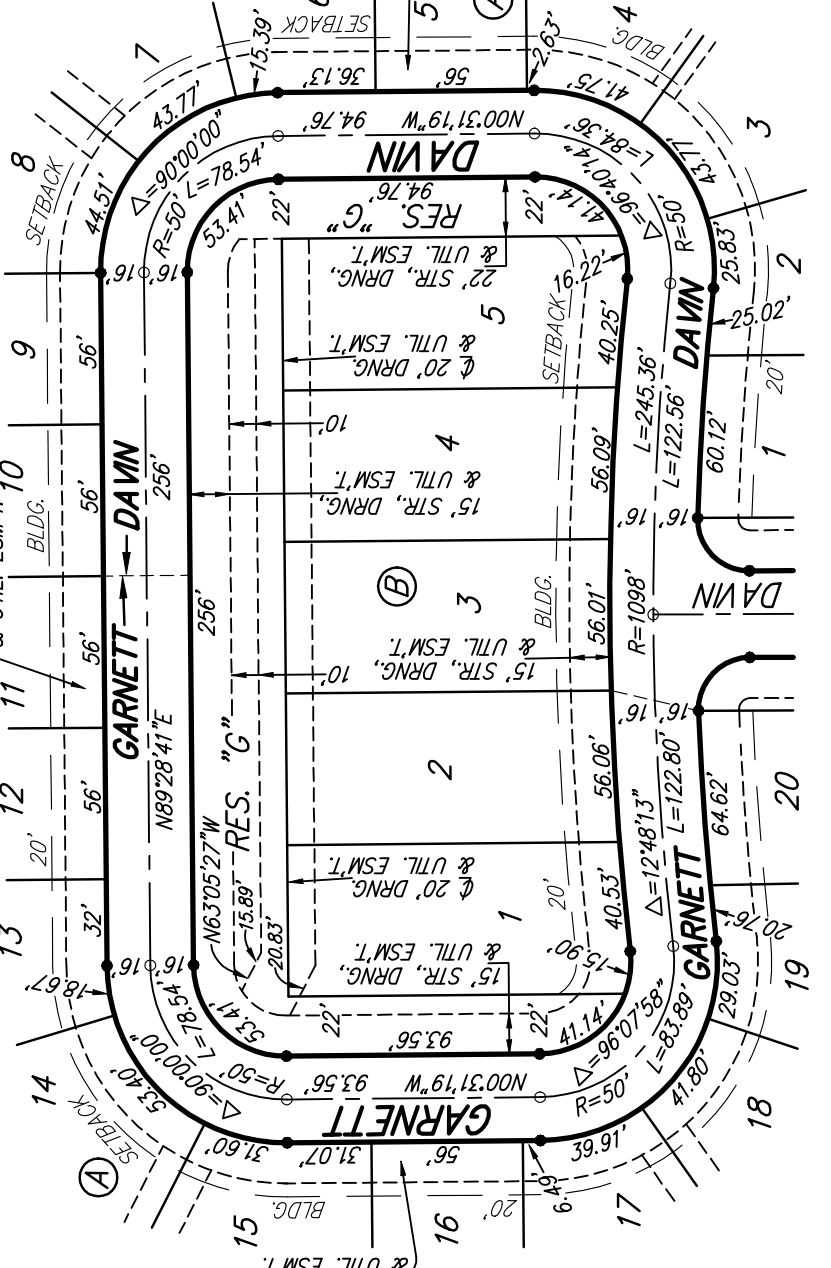
- = #4 REBAR IN "BAUGHMAN" CAP (SET)
 - = #4 REBAR IN "BAUGHMAN" CAP (FOUND)
 - = 3/8" IRON (FOUND)
 - = MAG. MALL. IN WALKER OVER STONE (FOUND)
- (M) = MEASURED
 - (P) = PLATTED
 - (CM) = MEASURED INFO.
 - (C-P) = PLATTED INFO.

LOT	BLOCK	ELEVATION
3-7	A	1380.0
8-14	A	1380.0
28-30	A	1380.0
39-41	A	1380.0
54-57	D	1380.0
63-68	D	1380.0
70-83	D	1380.0

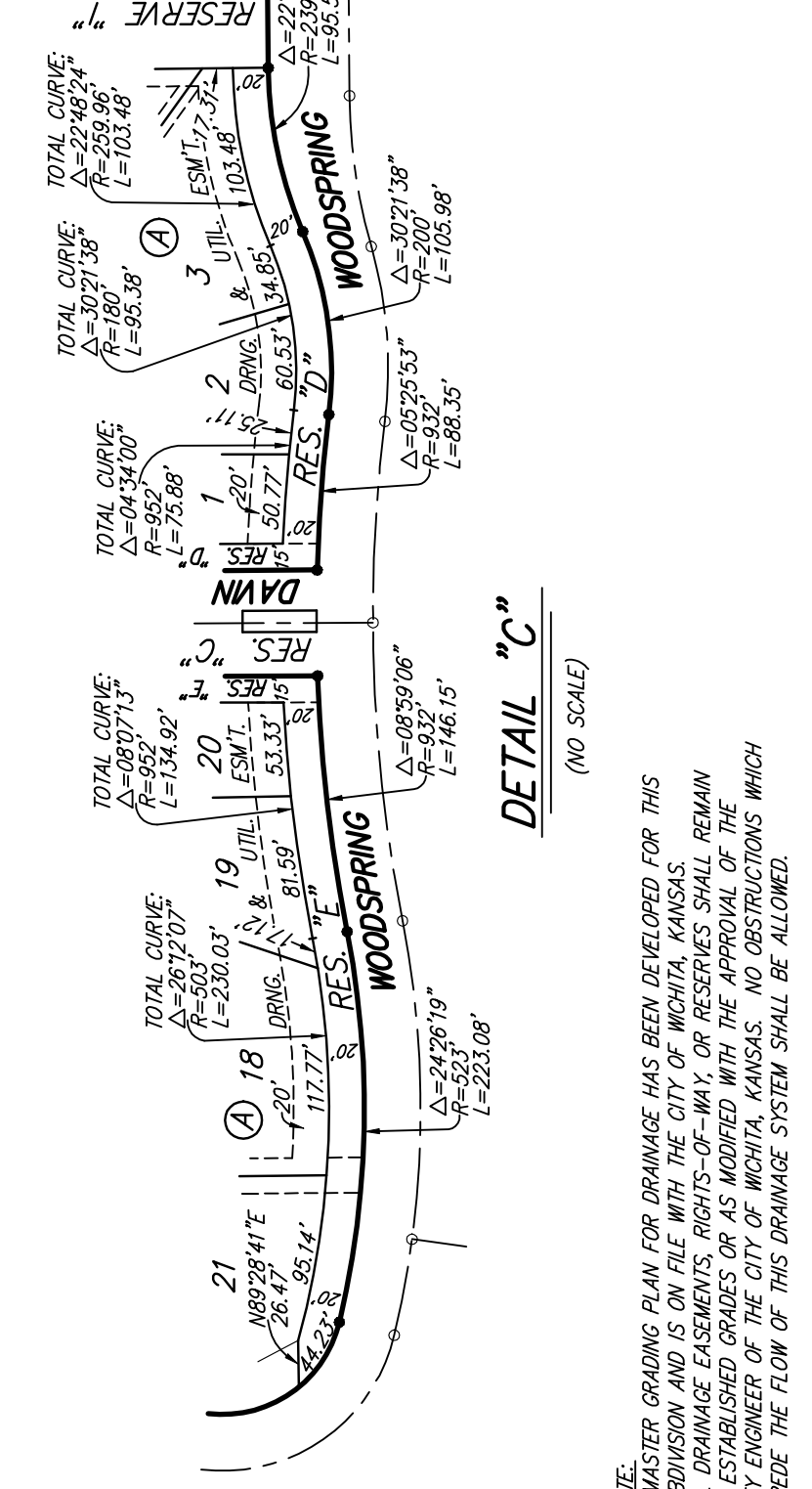
BENCHMARK:
CROSS OUT ON NORTH END OF WEST HEADWALL
127.5 SOUTH A 12 WEST OF THE INTERSECTION
ELEV. = 1382.45 MARSB



DETAIL "A"
(NO SCALE)



DETAIL "B"
(NO SCALE)



DETAIL "C"
(NO SCALE)

NOTE:
A MASTER GRADING PLAN FOR DRAINAGE HAS BEEN DEVELOPED FOR THIS CENTER ADDITION.
ALL DRAINAGE EASEMENTS, RIGHTS-OF-WAY OR RESERVES SHALL REMAIN AT ESTABLISHED GRADES OR AS MODIFIED WITH THE APPROVAL OF THE CITY ENGINEER OF THE CITY OF WICHITA, KANSAS. NO OBSTRUCTIONS WHICH IMPED THE FLOW OF THIS DRAINAGE SYSTEM SHALL BE ALLOWED.