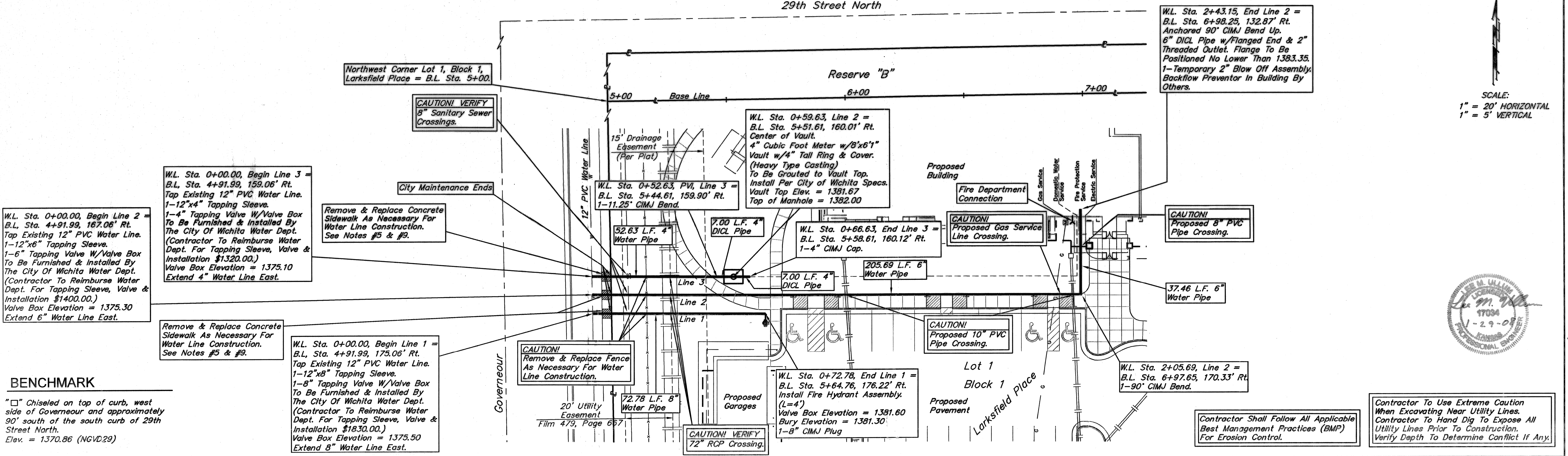


29th Street North

SCALE:
1" = 20' HORIZONTAL
1" = 5' VERTICAL



W.L. Sta. 0+00.00, Begin Line 2 = B.L. Sta. 4+91.99, 167.06' Rt. Tap Existing 12" PVC Water Line. 1-12"x6" Tapping Sleeve. 1-6" Tapping Valve W/Valve Box To Be Furnished & Installed By The City Of Wichita Water Dept. (Contractor To Reimburse Water Dept. For Tapping Sleeve, Valve & Installation \$1400.00.) Valve Box Elevation = 1375.30 Extend 6" Water Line East.

W.L. Sta. 0+00.00, Begin Line 3 = B.L. Sta. 4+91.99, 159.06' Rt. Tap Existing 12" PVC Water Line. 1-12"x4" Tapping Sleeve. 1-4" Tapping Valve W/Valve Box To Be Furnished & Installed By The City Of Wichita Water Dept. (Contractor To Reimburse Water Dept. For Tapping Sleeve, Valve & Installation \$1320.00.) Valve Box Elevation = 1375.10 Extend 4" Water Line East.

Remove & Replace Concrete Sidewalk As Necessary For Water Line Construction. See Notes #5 & #9.

Remove & Replace Concrete Sidewalk As Necessary For Water Line Construction. See Notes #5 & #9.

W.L. Sta. 0+00.00, Begin Line 1 = B.L. Sta. 4+91.99, 175.06' Rt. Tap Existing 12" PVC Water Line. 1-12"x8" Tapping Sleeve. 1-8" Tapping Valve W/Valve Box To Be Furnished & Installed By The City Of Wichita Water Dept. (Contractor To Reimburse Water Dept. For Tapping Sleeve, Valve & Installation \$1830.00.) Valve Box Elevation = 1375.50 Extend 8" Water Line East.

CAUTION! Remove & Replace Fence As Necessary For Water Line Construction.

CAUTION! Proposed Gas Service Line Crossing.

CAUTION! Proposed 8" PVC Pipe Crossing.

CAUTION! Proposed 10" PVC Pipe Crossing.

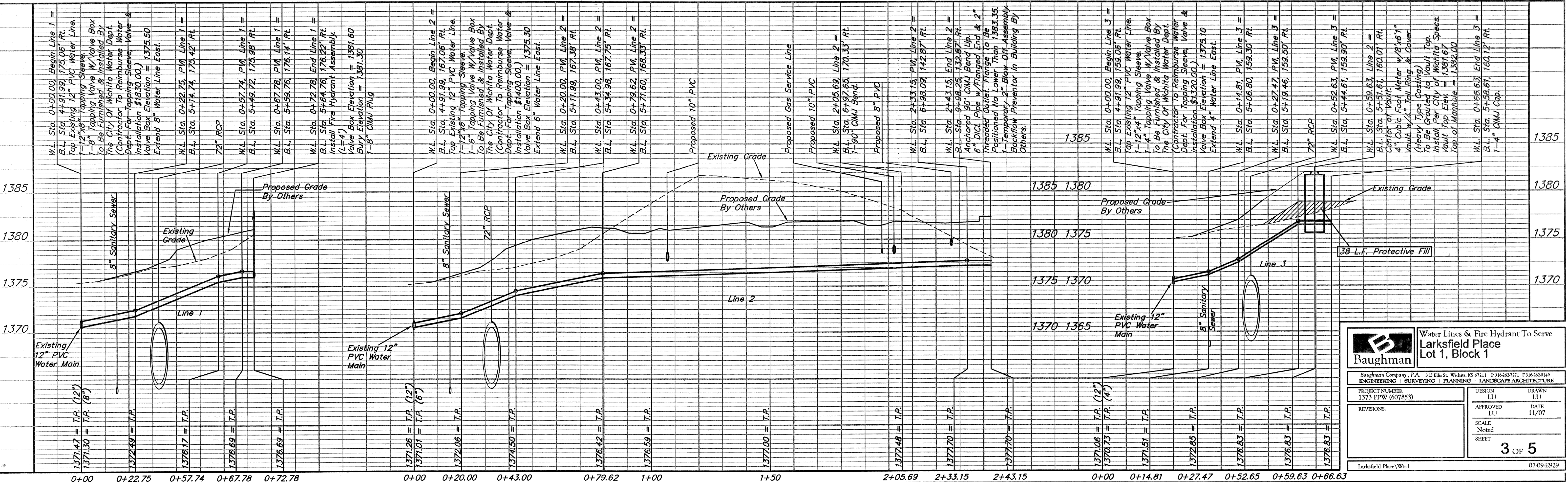
CAUTION! VERIFY 72" RCP Crossing.

Contractor Shall Follow All Applicable Best Management Practices (BMP) For Erosion Control.

Contractor To Use Extreme Caution When Excavating Near Utility Lines. Contractor To Hand Dig To Expose All Utility Lines Prior To Construction. Verify Depth To Determine Conflict If Any.

BENCHMARK

"□" Chiseled on top of curb, west side of Gouverneur and approximately 90' south of the south curb of 29th Street North. Elev. = 1370.86 (NGVD29)



Baughman Water Lines & Fire Hydrant To Serve Larkfield Place Lot 1, Block 1

Baughman Company, P.A. 315 Elm St. Wichita, KS 67211 P: 316-262-2221 F: 316-262-0149
ENGINEERING | SURVEYING | PLANNING | LANDSCAPE ARCHITECTURE

PROJECT NUMBER 1373 PPW (607853)	DESIGN LU	DRAWN LU
REVISIONS:	APPROVED LU	DATE 11/07
	SCALE Noted	
	SHEET	

3 OF 5

Larkfield Place/Wr-1 07-09-E929