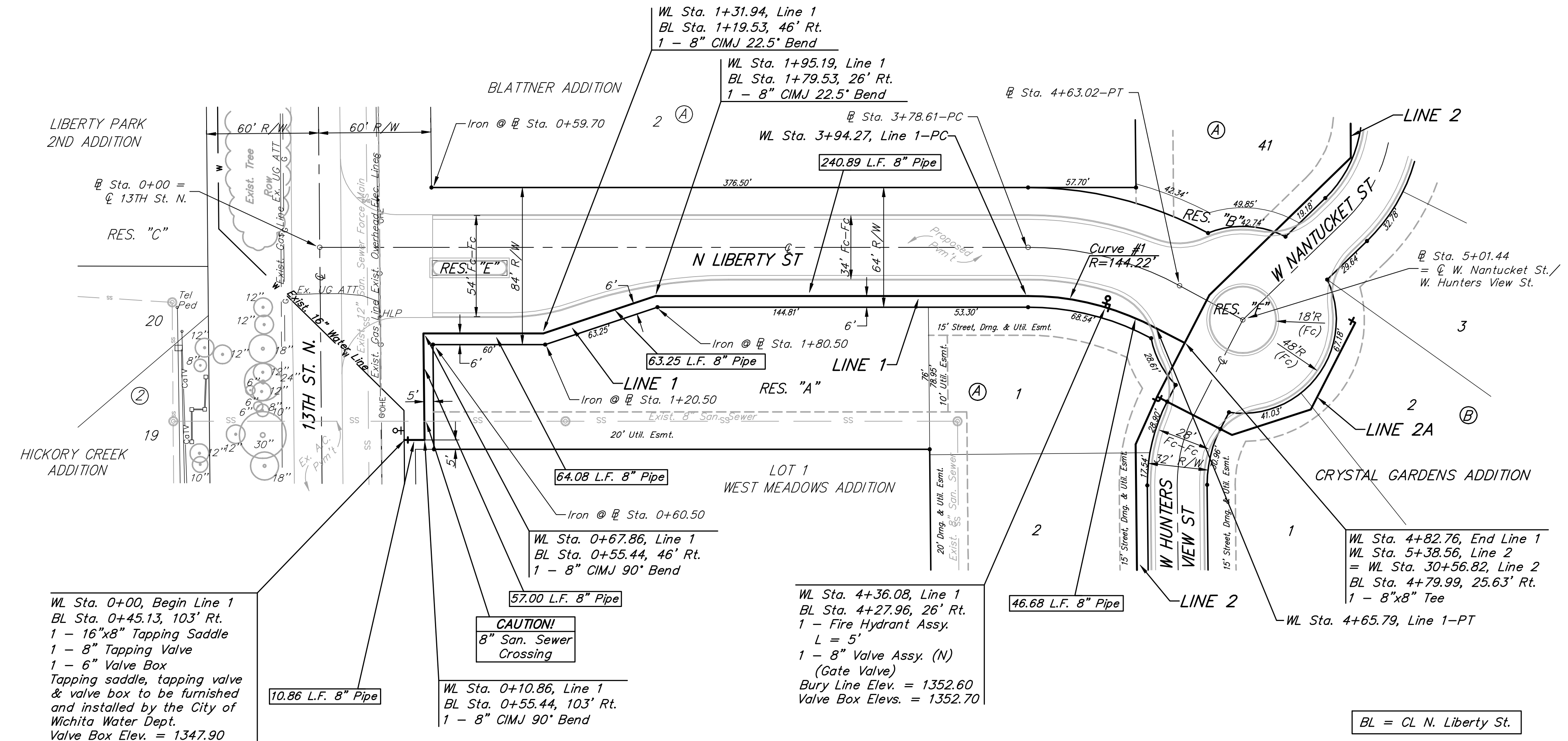


**Benchmark:**  
 "□" Cut On Top of Curb, West Side of Forestview, East of Fire Hydrant, and Along Easterly Extension of the South Line of Lot 2, Block A, Liberty Park 2nd Addition.  
 Elev. = 1347.62 NGVD29

City of Wichita Benchmark Southwest Corner of 13th ST N and 135th ST W 30' South and 35' West Intersection. East Side of Concrete Base for Highline Pole.  
 Elev. = 1355.65 NGVD29

Scale: 1" = 40' Horizontal  
 1" = 5' Vertical  
 • = Iron



WL Sta. 0+00, Begin Line 1  
 BL Sta. 0+45.13, 103' Rt.  
 1 - 16"x8" Tapping Saddle  
 1 - 8" Valve Box  
 Tapping saddle, tapping valve & valve box to be furnished and installed by the City of Wichita Water Dept.  
 Valve Box Elev. = 1347.90

**CAUTION!**  
 8" San. Sewer Crossing

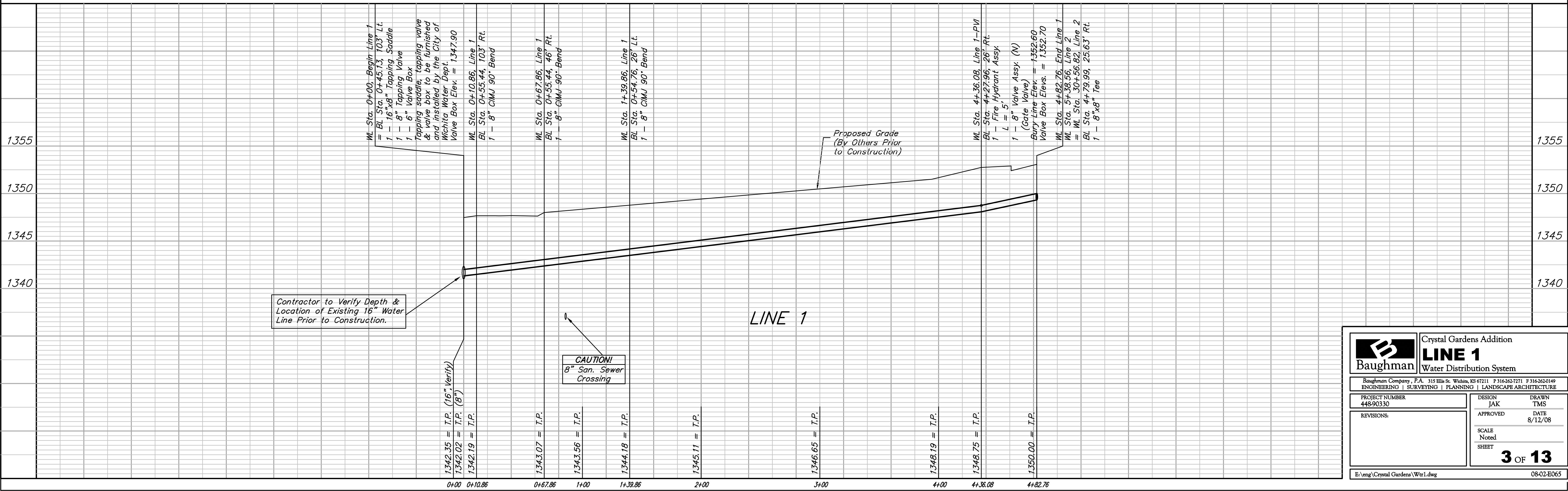
WL Sta. 4+36.08, Line 1  
 BL Sta. 4+27.96, 26' Rt.  
 1 - Fire Hydrant Assy.  
 L = 5'  
 1 - 8" Valve Assy. (N) (Gate Valve)  
 Bury Line Elev. = 1352.60  
 Valve Box Elev. = 1352.70

BL = CL N. Liberty St.

For radii under 200', Contractor shall use short pipe lengths.

Curve #1  
 Curve Data Based on Waterline  
 Rad. = 196.22' Delta = 28° 24' 45" Tangent = 49.67'  
 Arc = 97.31' L.C. = 96.31' Def/Ft. = 8.75938 Min.

Station	Arc	CHORD LENGTHS		
		6' Rt.	Defl.	T. Defl.
3+94.27	-	-	0'00"00"	0'00"00"
4+00.00	5.73'	5.49'	1'08"17"	1'08"17"
4+25.00	25.00'	23.93'	4'57"57"	6'06"14"
4+36.08	11.08'	10.62'	2'12"03"	8'18"17"
4+50.00	13.92'	13.34'	2'45"54"	11'04"11"
4+65.79	15.79'	15.13'	3'08"12"	14'12"23"



Contractor to Verify Depth & Location of Existing 16" Water Line Prior to Construction.

**CAUTION!**  
 8" San. Sewer Crossing

**B** Baughman  
 Crystal Gardens Addition  
**LINE 1**  
 Water Distribution System

Baughman Company, P.A. 315 Ellis St. Wichita, KS 67211 P 316-262-7271 F 316-262-0149  
 ENGINEERING | SURVEYING | PLANNING | LANDSCAPE ARCHITECTURE

PROJECT NUMBER 448-90330	DESIGN JAK	DRAWN TMS
REVISIONS:	APPROVED	DATE 8/12/08
	SCALE Noted	
	SHEET	<b>3 OF 13</b>

E:\eng\Crystal Gardens\Wtr1.dwg 08-02-ED065