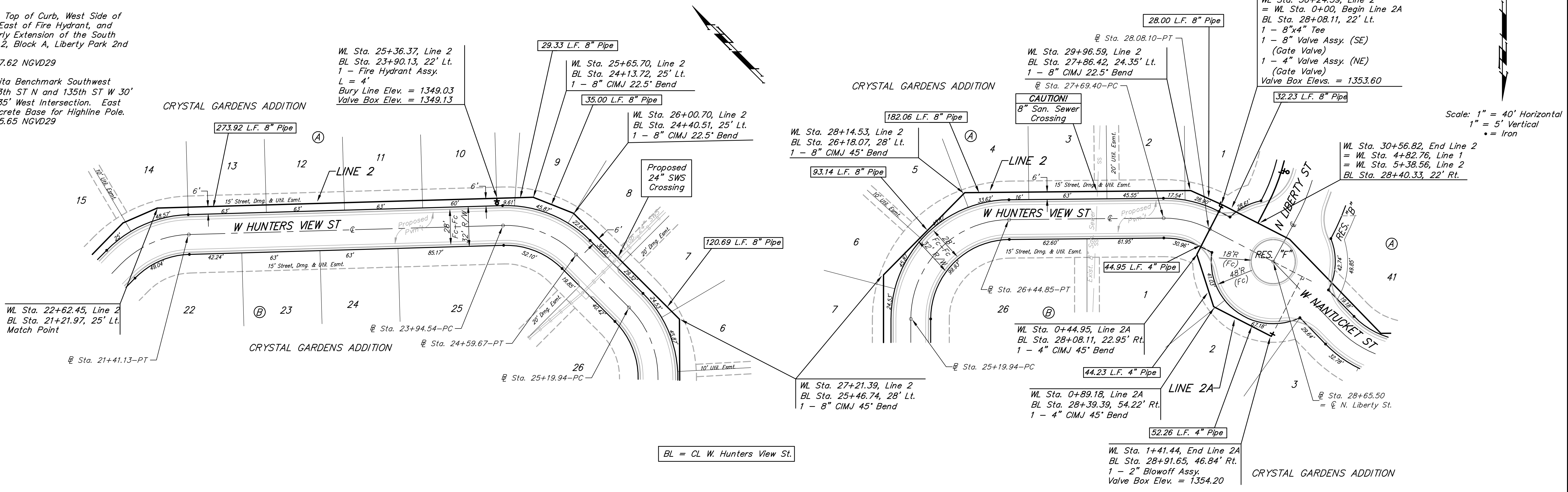


**Benchmark:**  
 "□" Cut On Top of Curb, West Side of  
 Forestview, East of Fire Hydrant, and  
 Along Easterly Extension of the South  
 Line of Lot 2, Block A, Liberty Park 2nd  
 Addition.  
 Elev. = 1347.62 NGVD29

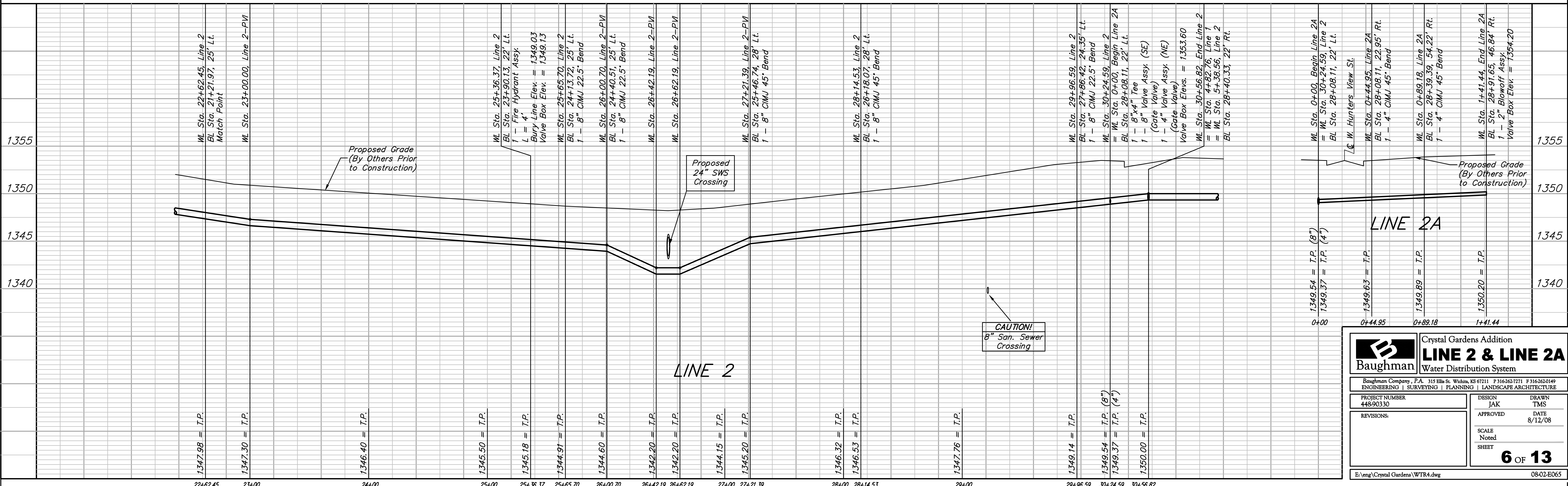
City of Wichita Benchmark Southwest  
 Corner of 13th ST N and 135th ST W 30'  
 South and 35' West Intersection. East  
 Side of Concrete Base for Highline Pole.  
 Elev. = 1355.65 NGVD29

WL Sta. 30+24.59, Line 2  
 = WL Sta. 0+00, Begin Line 2A  
 BL Sta. 28+08.11, 22' Lt.  
 1 - 8"x4" Tee  
 1 - 8" Valve Assy. (SE)  
 (Gate Valve)  
 1 - 4" Valve Assy. (NE)  
 (Gate Valve)  
 Valve Box Elevs. = 1353.60

Scale: 1" = 40' Horizontal  
 1" = 5' Vertical  
 • = Iron



BL = CL W. Hunters View St.



**Baughman** Crystal Gardens Addition  
**LINE 2 & LINE 2A**  
 Water Distribution System

Baughman Company, P.A. 315 Ellis St. Wichita, KS 67211 P 316-262-0149  
 ENGINEERING | SURVEYING | PLANNING | LANDSCAPE ARCHITECTURE

PROJECT NUMBER 448-90330	DESIGN JAK	DRAWN TMS
REVISIONS:	APPROVED	DATE 8/12/08
	SCALE Noted	
	SHEET	<b>6 OF 13</b>

E:\eng\Crystal Gardens\WTR4.dwg 08-02-ED05