

BENCHMARKS:
 BM #1: CITY OF WICHITA BENCHMARK DISC, TOP OF CURB AT WEST END OF CURB RETURN, NORTHWEST CORNER OF INTERSECTION OF CITY VIEW AND SHERIAC CIR. IN SHADOW WOODS ADDITION.
 ELEV. = 1386.66 NGVD29

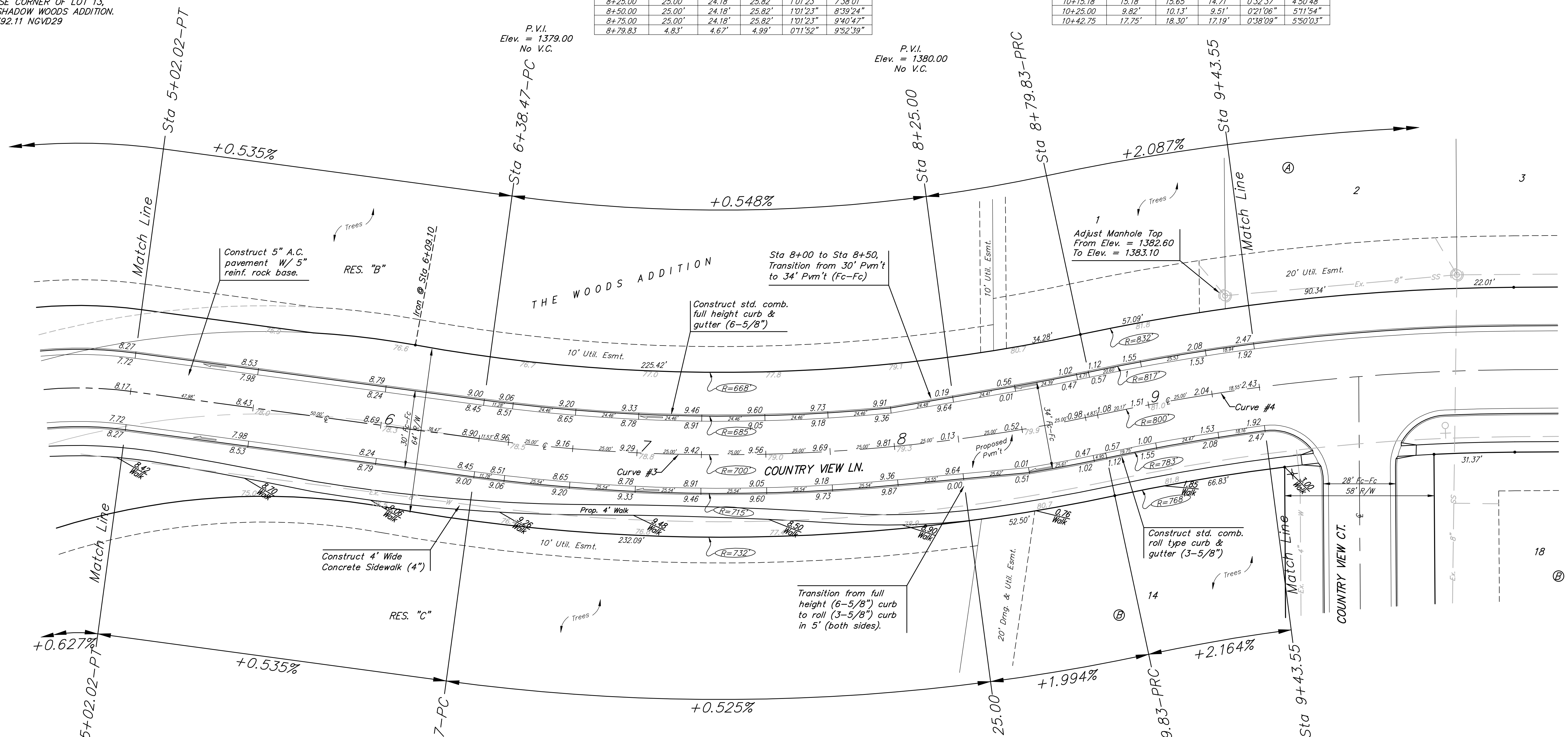
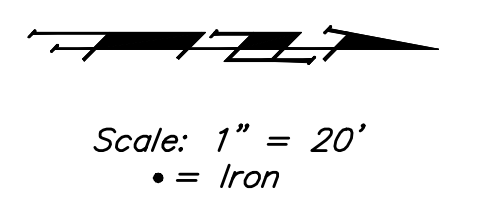
BM #2: CITY OF WICHITA BENCHMARK DISC, TOP OF CURB BY FIRE HYDRANT AT WEST END OF CURB RETURN, NORTHWEST CORNER OF INTERSECTION OF SHERIAC CIR. AND SHERIAC CT., SOUTH OF SE CORNER OF LOT 13, BLOCK B, SHADOW WOODS ADDITION.
 ELEV. = 1392.11 NGVD29

Curve #3
 Curve Data Based on Centerline
 Rad. = 700' Delta = 19°45'18" Tangent = 121.89'
 Arc = 241.36' L.C. = 240.16' Def./Ft. = 2.45546 Min.

Station	Arc	Face Chord Lengths		Defl.	Total Defl.
		8' Left	8' Right		
6+38.47	-	-	-	0°00'00"	0°00'00"
6+50.00	11.53'	11.15'	11.91'	0°28'19"	0°28'19"
6+75.00	25.00'	24.18'	25.82'	1°01'23"	1°29'42"
7+00.00	25.00'	24.18'	25.82'	1°01'23"	2°31'05"
7+25.00	25.00'	24.18'	25.82'	1°01'23"	3°32'28"
7+50.00	25.00'	24.18'	25.82'	1°01'23"	4°33'51"
7+75.00	25.00'	24.18'	25.82'	1°01'24"	5°35'15"
8+00.00	25.00'	24.18'	25.82'	1°01'23"	6°36'38"
8+25.00	25.00'	24.18'	25.82'	1°01'23"	7°38'01"
8+50.00	25.00'	24.18'	25.82'	1°01'23"	8°39'24"
8+75.00	25.00'	24.18'	25.82'	1°01'23"	9°40'47"
8+79.83	4.83'	4.67'	4.99'	0°11'52"	9°52'39"

Curve #4
 Curve Data Based on Centerline
 Rad. = 800' Delta = 11°40'05" Tangent = 81.74'
 Arc = 162.92' L.C. = 162.64' Def./Ft. = 2.14855 Min.

Station	Arc	Face Chord Lengths		Defl.	Total Defl.
		8' Left	8' Right		
8+79.83	-	-	-	0°00'00"	0°00'00"
9+00.00	20.17'	20.80'	19.54'	0°43'20"	0°43'20"
9+25.00	25.00'	25.78'	24.22'	0°53'43"	1°37'03"
9+43.55	18.55'	19.13'	17.97'	0°39'51"	2°16'54"
9+50.00	6.45'	6.65'	6.25'	0°13'52"	2°30'46"
9+75.00	25.00'	25.78'	24.22'	0°53'43"	3°24'29"
9+82.33	7.33'	7.56'	7.10'	0°15'45"	3°40'14"
10+00.00	17.67'	18.22'	17.12'	0°37'57"	4°18'11"
10+15.18	15.18'	15.65'	14.71'	0°32'37"	4°50'48"
10+25.00	9.82'	10.13'	9.51'	0°21'06"	5°11'54"
10+42.75	17.75'	18.30'	17.19'	0°38'09"	5°50'03"



P.V.I.
 Elev. = 1378.27
 No V.C.

P.V.I.
 Elev. = 1379.00
 No V.C.

Note: Sidewalk shown on this sheet is for reference only. Final location of sidewalk will be determined at the time of construction by the developer and will wind through the trees. Developer will trim trees as necessary for proposed sidewalk construction. Contractor will be required to hand-form all or part of the sidewalk on this sheet. No additional payment will be allowed for variations in quantity due to these field adjustments.

P.V.I.
 Elev. = 1380.00
 No V.C.

P.V.I.
 Elev. = 1381.12
 No V.C.

NOTE: ROLL TYPE CURB & GUTTER TO BE CONSTRUCTED ON SOME OF THE PAVEMENT SHOWN ON THIS SHEET. TOP OF CURB ELEVATIONS ARE GIVEN FOR FULL HEIGHT CURB.

	THE WOODS ADDITION - PH I COUNTRY VIEW STA 5+02.02 TO STA 9+43.55	
	<small>Baughman Company, P.A. 315 Ellis St. Wichita, KS 67211 P 316-262-7271 F 316-262-0149 ENGINEERING SURVEYING PLANNING LANDSCAPE ARCHITECTURE</small>	
PROJECT NUMBER 47284359	DESIGN AEG	DRAWN TMS
REVISIONS:	APPROVED AEG	DATE 8/11/08
SCALE Noted		SHEET 10 OF 34
<small>The Woods Addition\Phase 1\STR\STR1.dwg</small>		<small>06-06-E583</small>