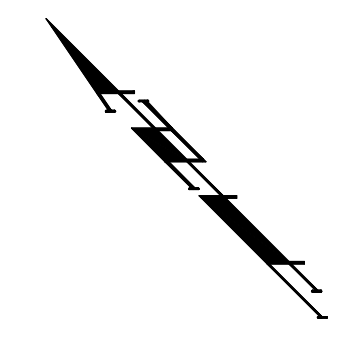
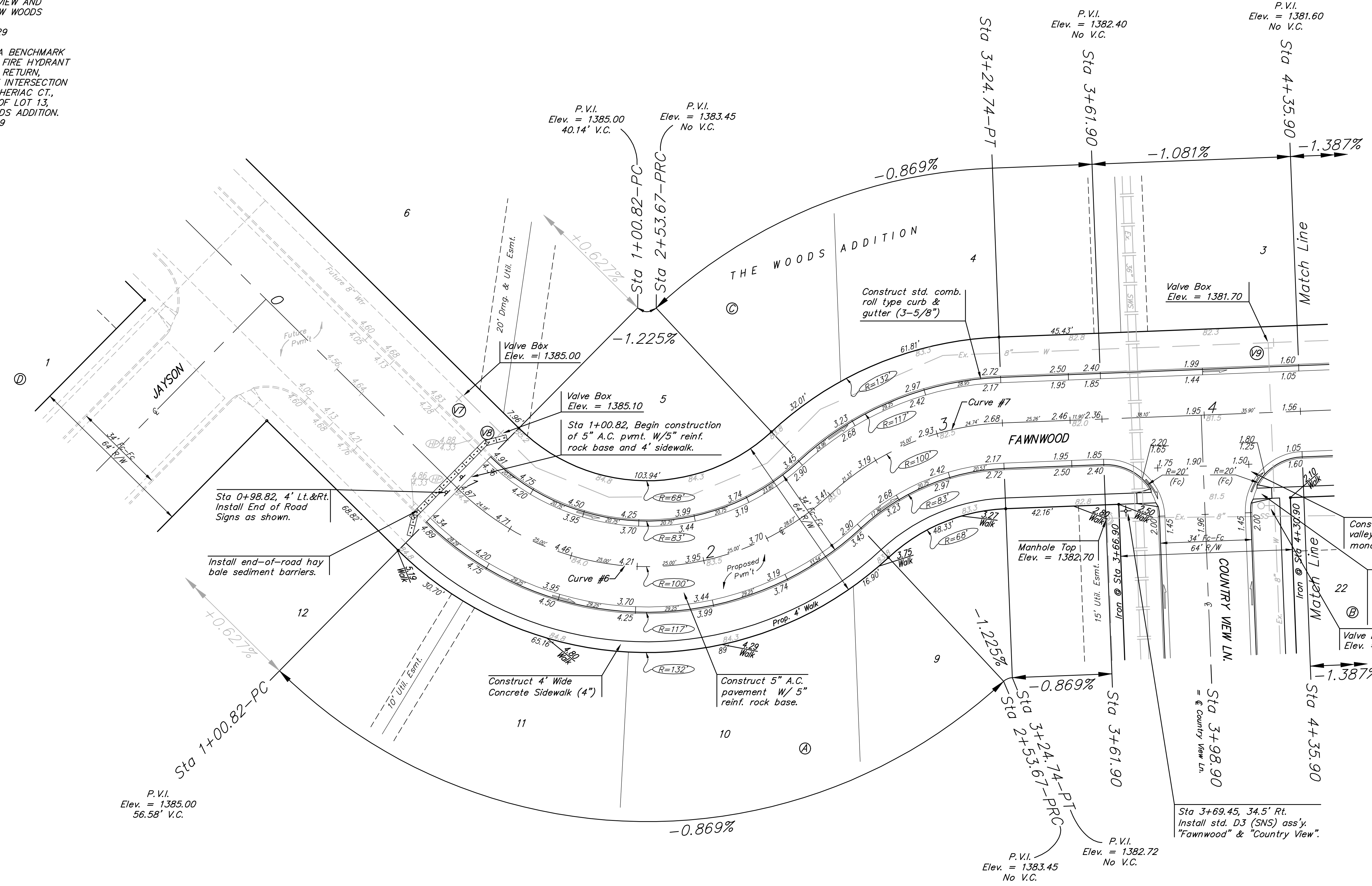


BENCHMARKS:
 BM #1: CITY OF WICHITA BENCHMARK DISC, TOP OF CURB AT WEST END OF CURB RETURN, NORTHWEST CORNER OF INTERSECTION OF CITY VIEW AND SHERIAC CIR. IN SHADOW WOODS ADDITION.
 ELEV. = 1386.66 NGVD29

BM #2: CITY OF WICHITA BENCHMARK DISC, TOP OF CURB BY FIRE HYDRANT AT WEST END OF CURB RETURN, NORTHWEST CORNER OF INTERSECTION OF SHERIAC CIR. AND SHERIAC CT., SOUTH OF SE CORNER OF LOT 13, BLOCK B, SHADOW WOODS ADDITION.
 ELEV. = 1392.11 NGVD29



Scale: 1" = 20'
 • = Iron



Curve #6
 Curve Data Based on Centerline

Rad. = 100' Delta = 87° 34' 29" Tangent = 95.85'
 Arc = 152.85' L.C. = 138.40' Def/Ft. = 17.18936 Min.

Station	Arc	FACE CHORD LENGTHS		Defl.	T. Defl.
		8' Lt.	8' Rt.		
1+00.82	-	-	-	0'00"00"	0'00"00"
1+25.00	24.18'	18.09'	30.15'	6°55'37"	6°55'37"
1+50.00	25.00'	18.70'	31.17'	7°09'42"	14°05'19"
1+75.00	25.00'	18.70'	31.17'	7°09'42"	21°15'02"
2+00.00	25.00'	18.70'	31.17'	7°09'42"	28°24'44"
2+25.00	25.00'	18.70'	31.17'	7°09'42"	35°34'27"
2+50.00	25.00'	18.70'	31.17'	7°09'42"	42°44'09"
2+53.67	3.67'	2.75'	4.59'	1°03'05"	43°47'14"

Curve #7
 Curve Data Based on Centerline

Rad. = 100' Delta = 40° 43' 22" Tangent = 37.11'
 Arc = 71.07' L.C. = 69.59' Def/Ft. = 17.18986 Min.

Station	Arc	FACE CHORD LENGTHS		Defl.	T. Defl.
		8' Lt.	8' Rt.		
2+53.67	-	-	-	0'00"00"	0'00"00"
2+75.00	21.33'	26.61'	15.97'	6°06'39"	6°06'39"
3+00.00	25.00'	31.17'	18.70'	7°09'45"	13°16'24"
3+24.74	24.74'	30.85'	18.51'	7°05'16"	20°21'41"

NOTE: ROLL TYPE CURB & GUTTER TO BE CONSTRUCTED ON THE PAVEMENT SHOWN ON THIS SHEET. TOP OF CURB ELEVATIONS ARE GIVEN FOR FULL HEIGHT CURB.

	THE WOODS ADDITION - PH I FAWNWOOD STA 1+00.82 TO STA 4+35.90	
	<small>Baughman Company, P.A. 315 Ellis St. Wichita, KS 67211 P 316-262-7271 F 316-262-0149 ENGINEERING SURVEYING PLANNING LANDSCAPE ARCHITECTURE</small>	
PROJECT NUMBER 47284359	DESIGN AEG	DRAWN TMS
REVISIONS:	APPROVED AEG	DATE 8/11/08
SCALE Noted		SHEET 13 OF 34
<small>The Woods Addition\Phase 1\STR\STR1.dwg</small>		<small>06-06-E583</small>