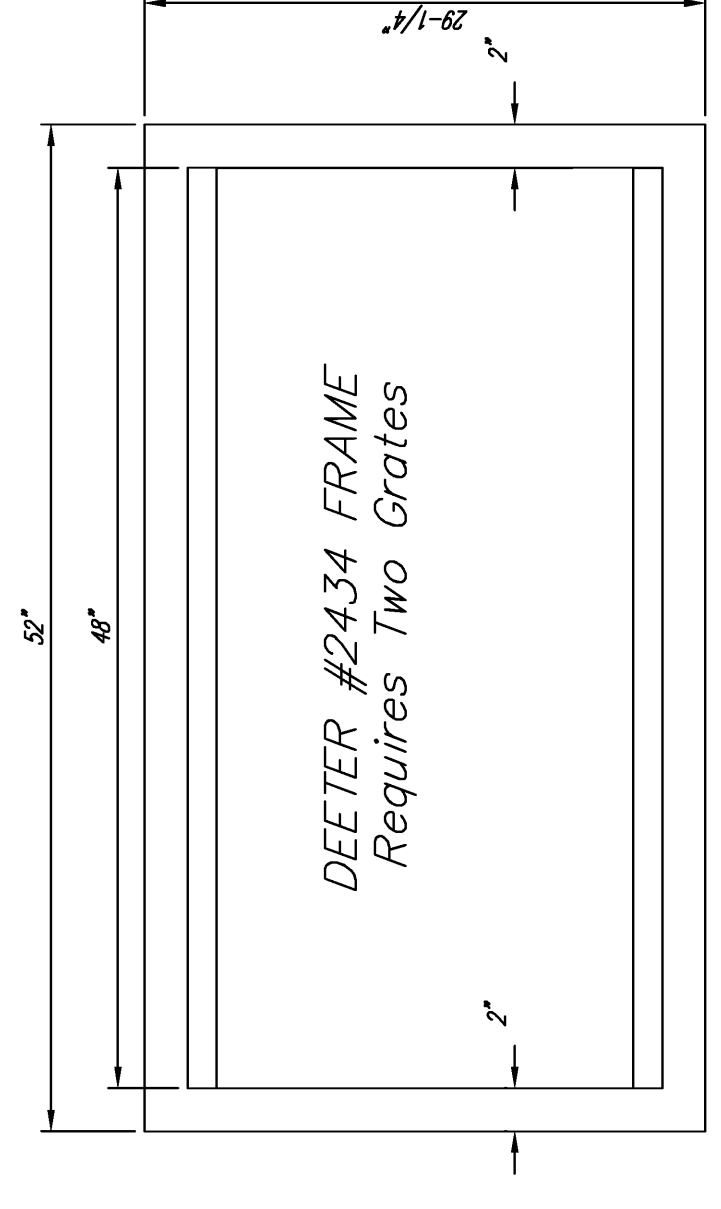
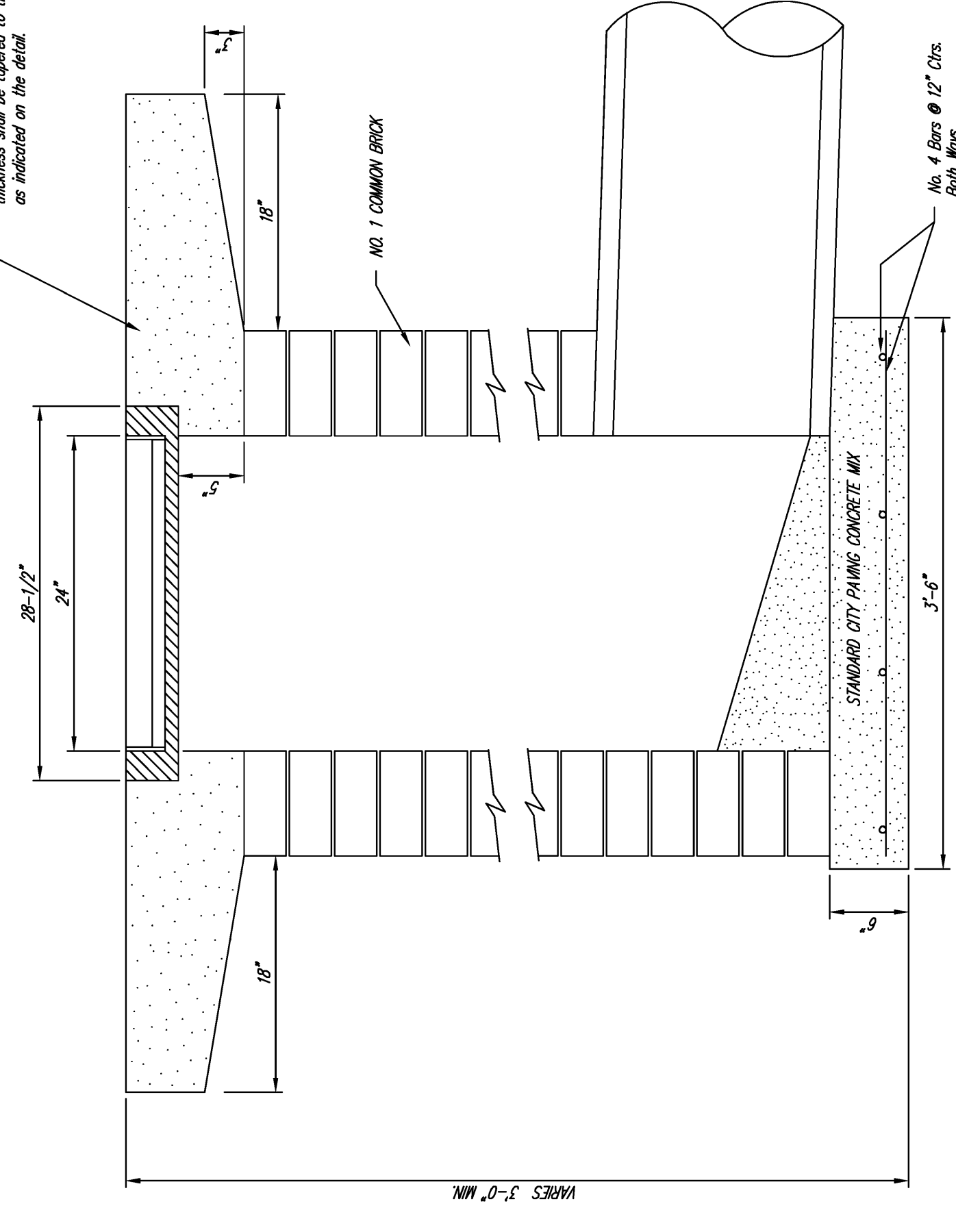
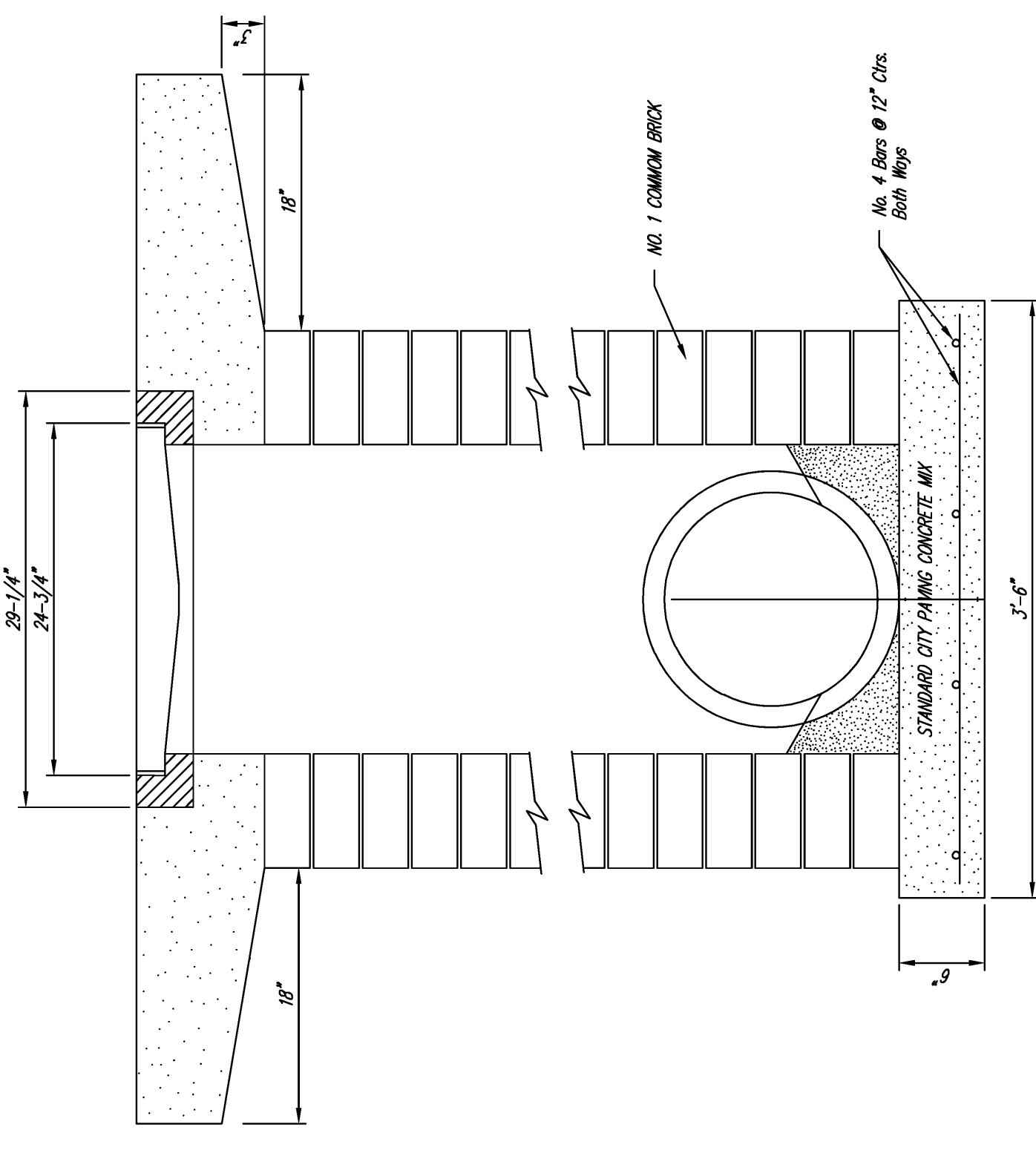
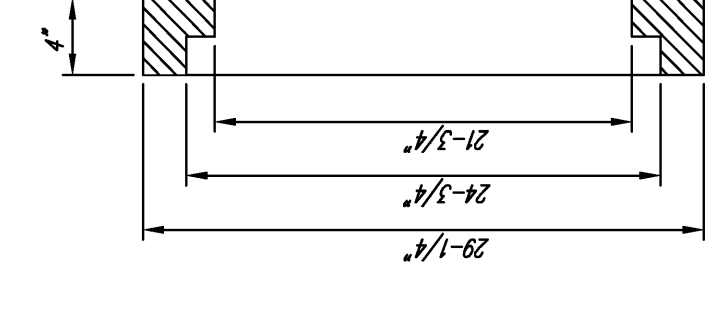


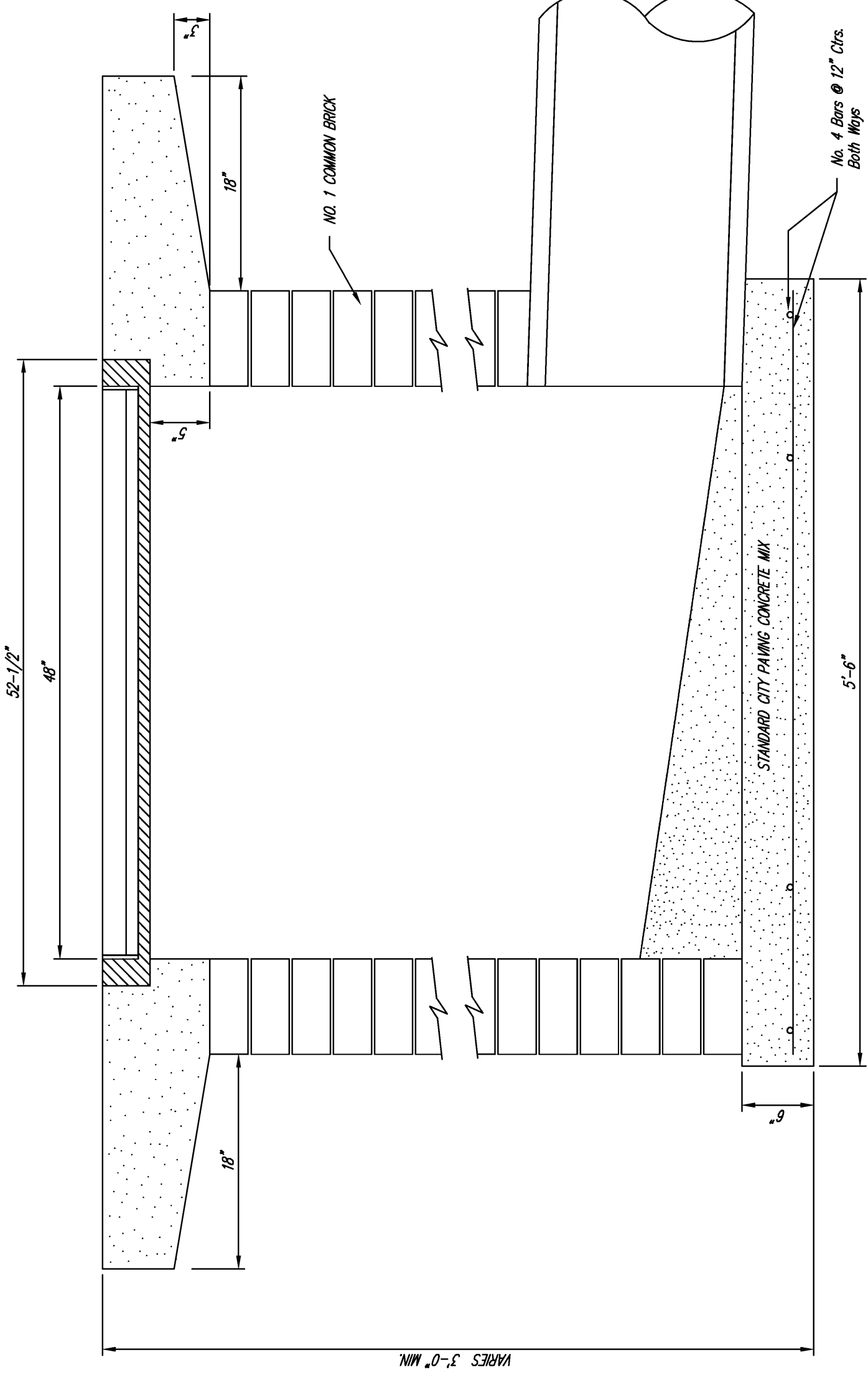
NOTE: Grates shall be imprinted on the top surface with "CITY OF WICHITA" using letters at least 1" in height. Other marking methods may be approved by the engineer.

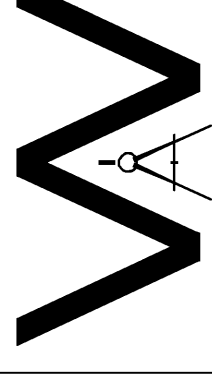


Double 24" x 24" Frame Detail



Note: Concrete curb shall be constructed around the inlet when inlet is located in an unopened area. Where the inlet is adjacent to pavement, the pavement thickness shall be tapered to the inlet in 18 inches as indicated on the detail.



THE CITY OF WICHITA		DROP INLET 2' X 2 1/2' X 4'	
		M. E. LINDEBAK P.E. - CITY ENGINEER PROJECT NUMBER XXX-XXXXX INSEK CODE XXXXXX DATE MAR 96 SHEET 14 OF 44	
CITY ENGINEER'S OFFICE CITY OF WICHITA, SEVENTH FLOOR WICHITA, KANSAS 67202 (316) 248-4114 FAX			