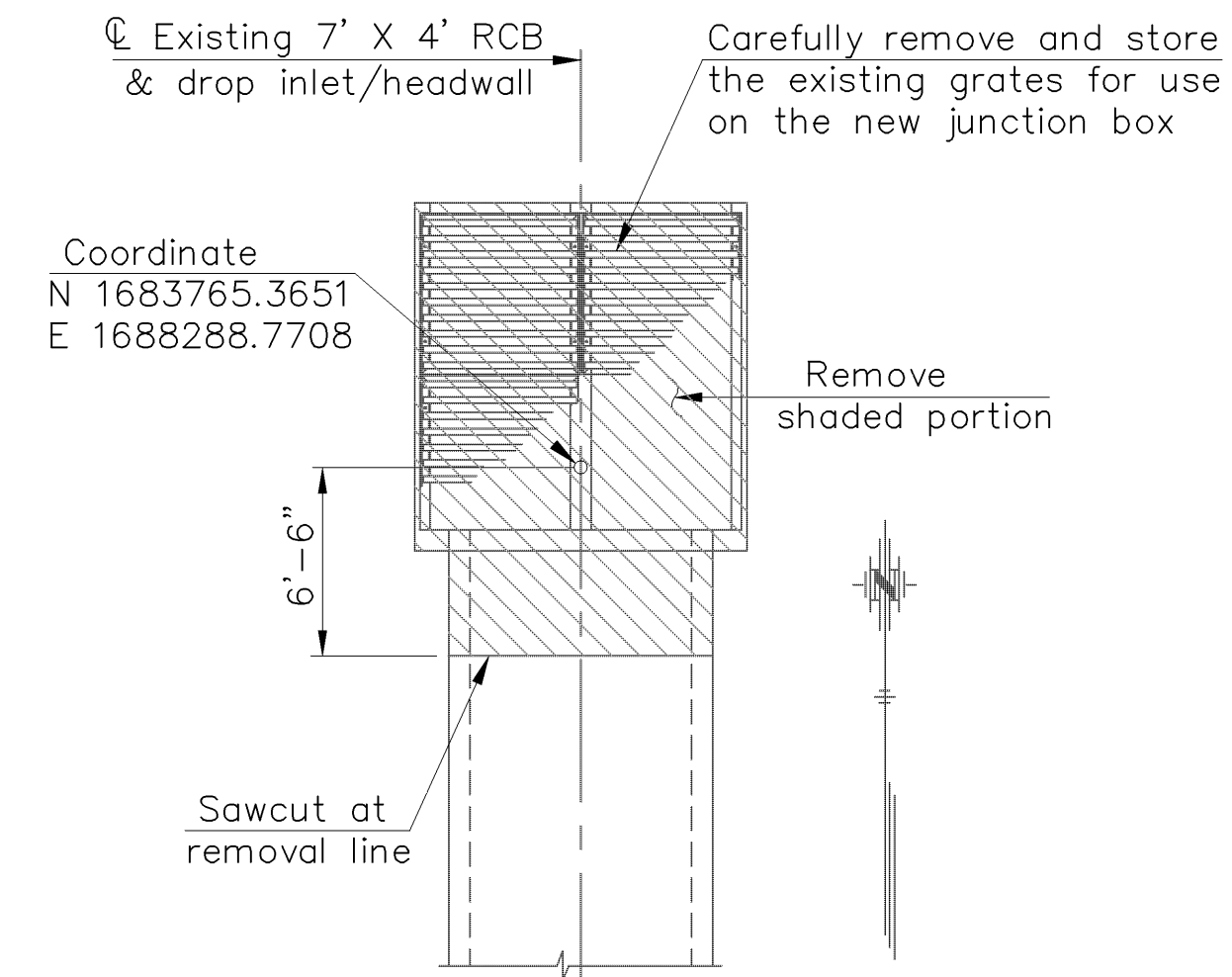


Note: E.F. Indicates each face
 N.F. Indicates near face
 F.F. Indicates far face

SHEET NO.	TOTAL SHEETS
16	44



REMOVAL SKETCH

Note: Removal of the existing drop inlet, removal of part of the 7' X 4' RCB and sawcutting shall be included in the bid item "Removal of Existing Structure". If removal line falls within two feet of a joint in the 7' X 4' RCB the location may be adjusted South as directed by the Engineer.

GENERAL NOTES

UNIT STRESSES: GRADE 4.0 CONCRETE (AE) $f'c = 4,000$ psi
 REINFORCING STEEL (GRADE 60) $f_y = 60,000$ MPa

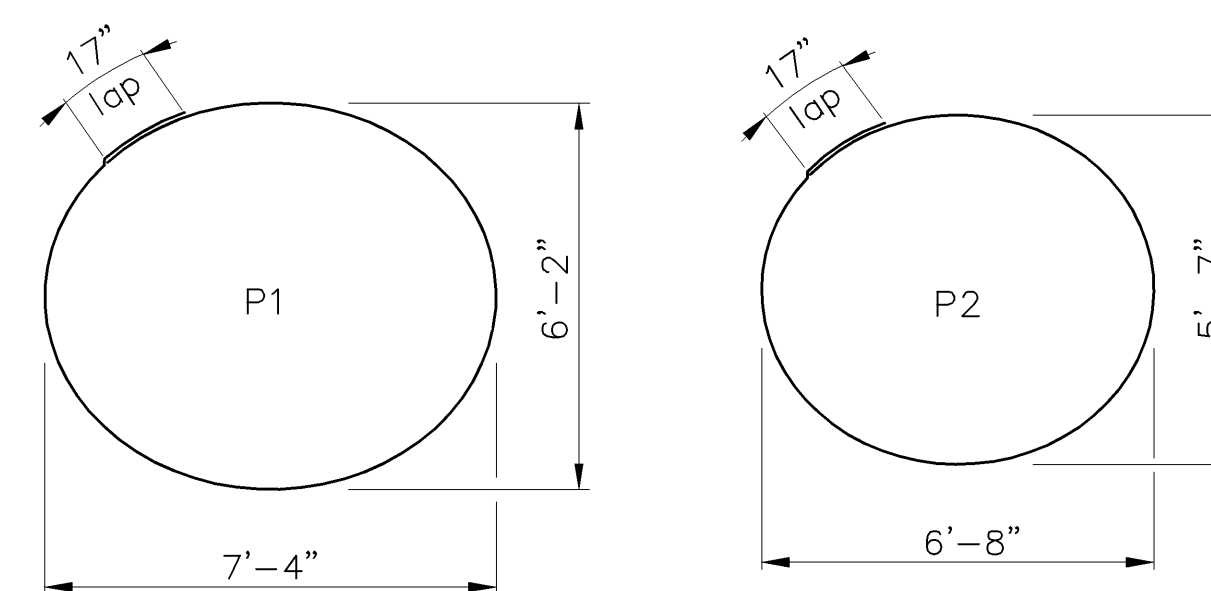
CONCRETE: GRADE 4.0 CONCRETE (AE) SHALL BE USED THROUGHOUT. BEVEL ALL EXPOSED EDGES WITH A 3/4" TRIANGULAR MOULDING.

REINFORCING: ALL REINFORCING SHALL CONFORM TO ASTM A615, GRADE 60. ALL DIMENSIONS RELATIVE TO REINFORCING STEEL SHALL BE TO CENTERLINE OF BARS UNLESS OTHERWISE NOTED. ALL REINFORCING SHALL BE COATED WITH EPOXY AS SET FORTH IN THE SPECIAL PROVISIONS. BAR SUPPORTS SHALL BE COATED.

SEAL COURSE: A SEAL COURSE MAY BE REQUIRED BY THE ENGINEER. THE SEAL COURSE SHALL BE UNREINFORCED CONCRETE (COMMERCIAL GRADE) TO A MINIMUM DEPTH OF 3" OR AS DETERMINED BY THE ENGINEER. CONCRETE FOR THE SEAL COURSE SHALL BE PAID FOR AT THE UNIT PRICE SET FOR SAID ITEM.

FOUNDATION STABILIZATION: THE FOUNDATION STABILIZATION QUANTITY HAS BEEN CALCULATED TO THE LIMITS SHOWN ON THE "RCB AUXILIARY DETAILS" SHEET. THE DEPTH MAY BE INCREASED BY THE ENGINEER. THE CONTRACTOR MAY UNDERRUN THE FOUNDATION STABILIZATION IF FOUNDED ON FIRM MATERIAL AND WITH THE ENGINEERS APPROVAL.

EXCAVATION: EXCAVATION SHALL NOT BE PAID FOR DIRECTLY, BUT SHALL BE SUBSIDIARY TO OTHER ITEMS.



BENDING DIAGRAMS
 All dimensions are out to out of bars

* See Bending Diagrams

BILL OF REINFORCING

BAR	F1	F2	H1	H2	H3	P1*	P2*	V1	V2
SIZE	#4	#4	#4	#4	#4	#4	#4	#4	#4
NUMBER	26	66	38	36	54	2	2	134	34
LENGTH	16'-6"	6'-2"	16'-6"	3'-10"	6'-2"	22'-4"	19'-11"	7'-6"	1'-11"

SUMMARY OF QUANTITIES	
CONCRETE (GRADE 4.0)(AE)	11.8 C.Y.
REINFORCING STEEL (GRADE 60)(EPOXY COATED)	2,060 Lbs.
REMOVAL OF EXISTING STRUCTURE	LUMP SUM
FOUNDATION STABILIZATION	4 C.Y.
SEAL COURSE (Set)	1 C.Y.

PROJECT NO. 54-87 KA-1102-01
JUNCTION BOX DETAILS
 NORTH FRONTAGE ROAD

CFS
Cook, Flatt & Strobel
 ENGINEERS, P. A.

DESIGNED	RSC	SCALE
DETAILED	DEG	DATE
QUANTITIES	SHEET	OF