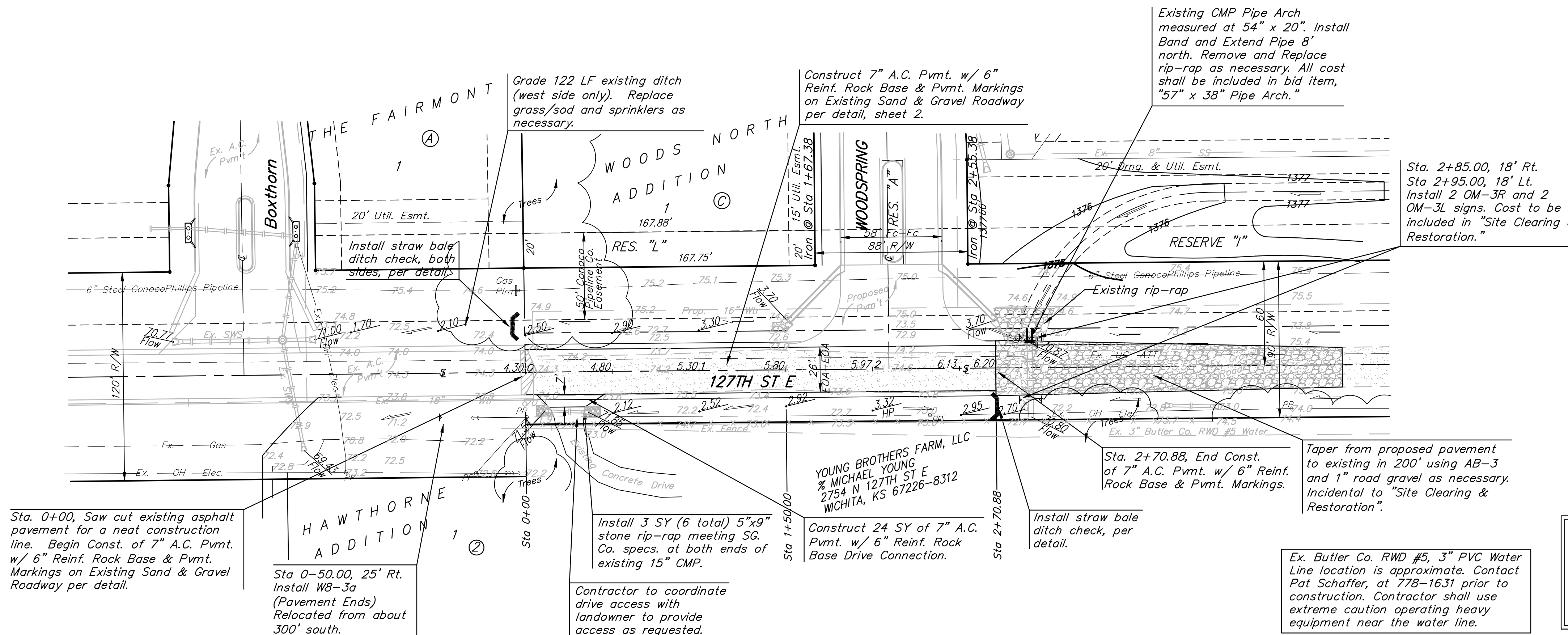
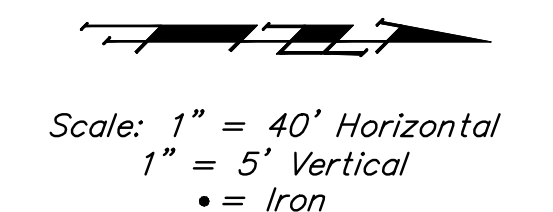


BENCHMARKS:

CROSS CUT ON NORTH END OF WEST HEADWALL 137.5' SOUTH & 12' WEST OF THE INTERSECTION OF 29TH ST N & 127TH ST E. ELEV. = 1382.45 NAVD88

Q OF WEST EDGE OF CONCRETE DRIVE 31.4' NE OF THE EAST 1/4 CORNER OF SEC. 3, TWP 27-S, R-2-E. ELEV. = 1373.82 NAVD88



Sta. 0+00, Saw cut existing asphalt pavement for a neat construction line. Begin Const. of 7" A.C. Pvmt. w/ 6" Reinf. Rock Base & Pvmt. Markings on Existing Sand & Gravel Roadway per detail.

Sta 0-50.00, 25' Rt. Install WB-3a (Pavement Ends) Relocated from about 300' south.

Contractor to coordinate drive access with landowner to provide access as requested.

Construct 24 SY of 7" A.C. Pvmt. w/ 6" Reinf. Rock Base Drive Connection.

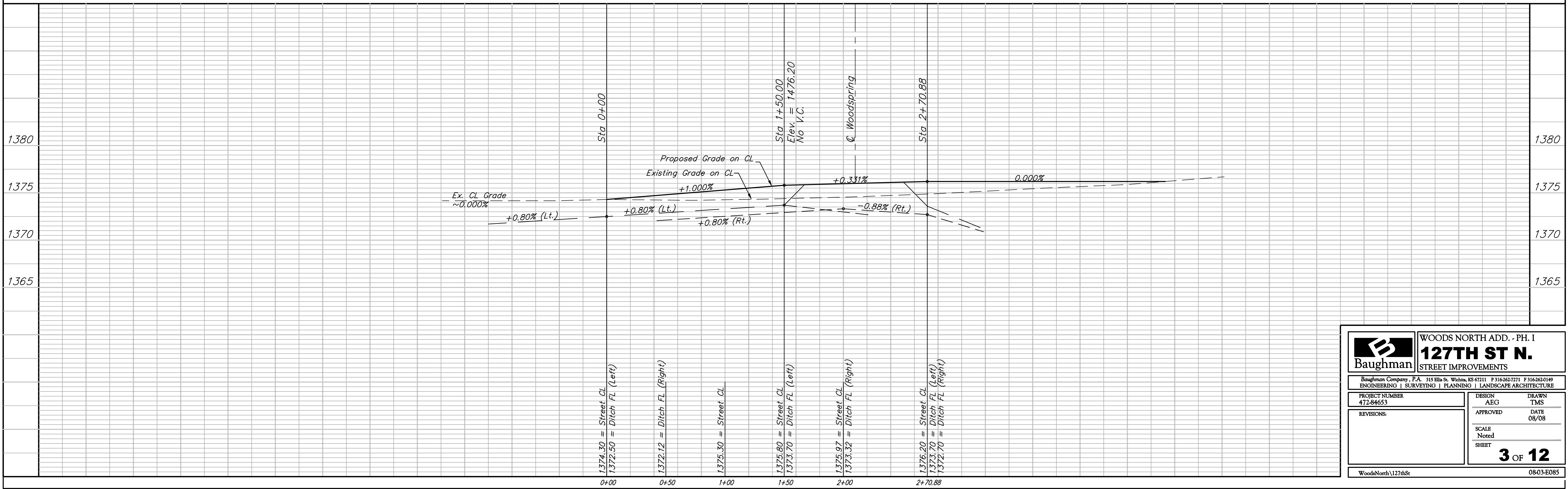
Sta. 2+70.88, End Const. of 7" A.C. Pvmt. w/ 6" Reinf. Rock Base & Pvmt. Markings.

Taper from proposed pavement to existing in 200' using AB-3 and 1" road gravel as necessary. Incidental to "Site Clearing & Restoration".

Sta. 2+85.00, 18' Rt. Sta 2+95.00, 18' Lt. Install 2 OM-3R and 2 OM-3L signs. Cost to be included in "Site Clearing & Restoration."

Ex. Butler Co. RWD #5, 3" PVC Water Line location is approximate. Contact Pat Schaffer, at 778-1631 prior to construction. Contractor shall use extreme caution operating heavy equipment near the water line.

The contractor shall not operate equipment or perform construction within the pipeline easement without a ConocoPhillips representative on-site. Coordination of all equipment crossings and construction within the pipeline easement shall be coordinated with the pipeline representative, Scott Salisbury, 681-2081.



		WOODS NORTH ADD. - PH. I 127TH ST N. STREET IMPROVEMENTS	
Baughman Company, P.A. 315 Ellis St. Wichita, KS 67211 P 316-262-7711 F 316-262-0149 ENGINEERING SURVEYING PLANNING LANDSCAPE ARCHITECTURE			
PROJECT NUMBER 472-84653	DESIGN AEG	DRAWN TMS	APPROVED DATE 08/08
REVISIONS:	SCALE Noted SHEET 3 OF 12		
WoodsNorth\127thSt			0803-E085