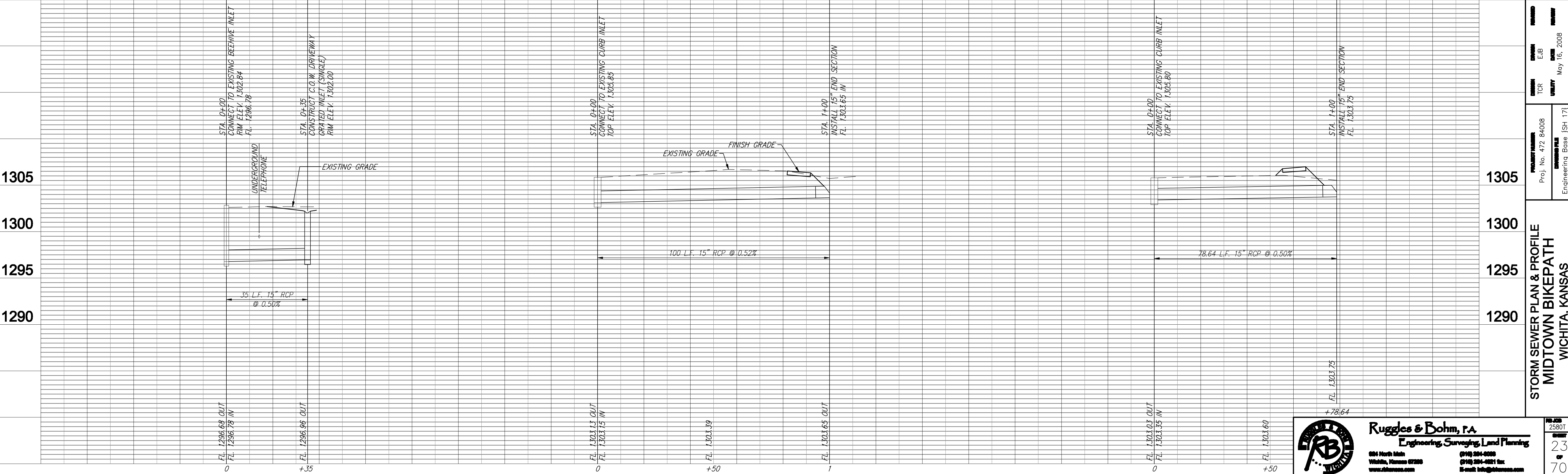
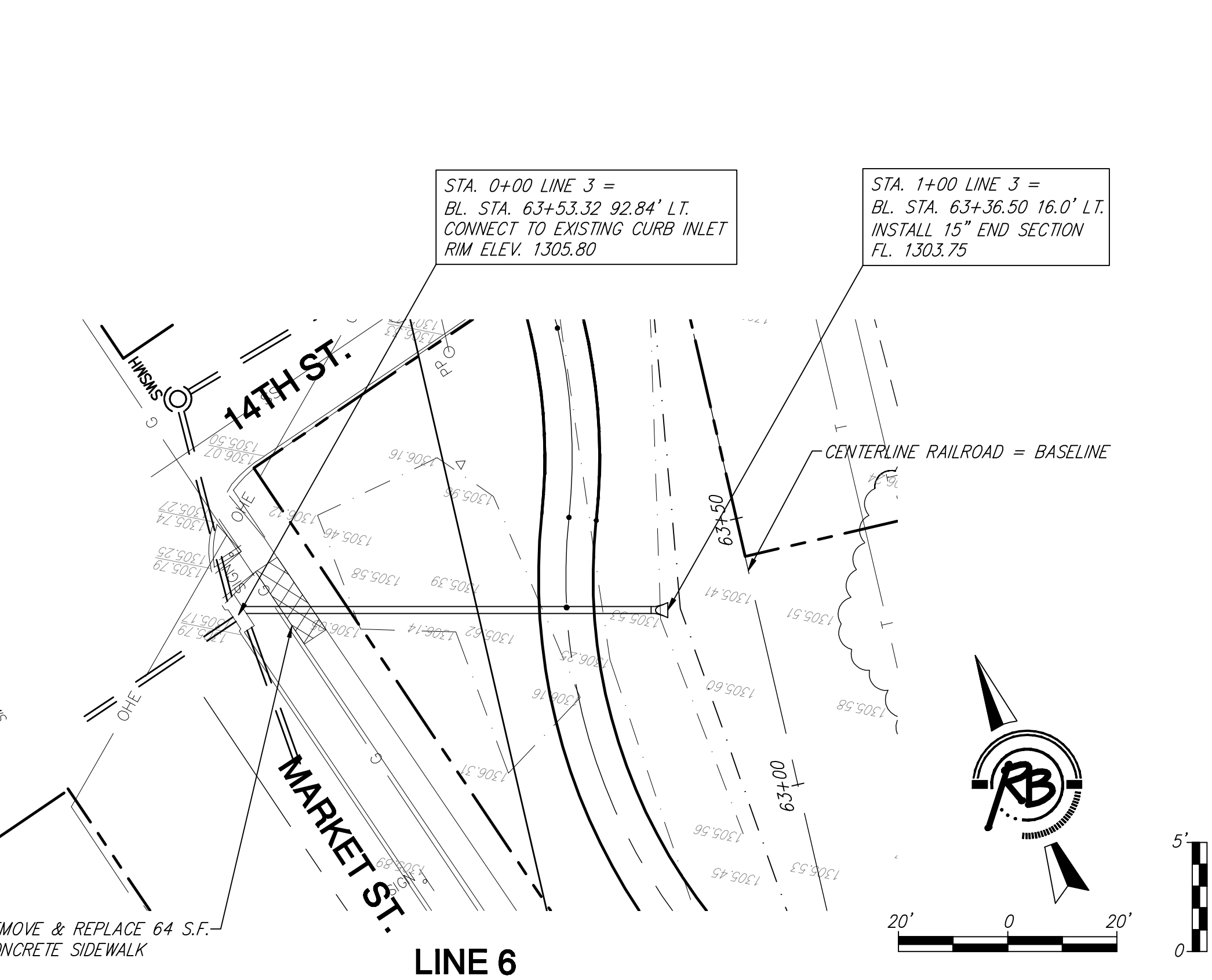
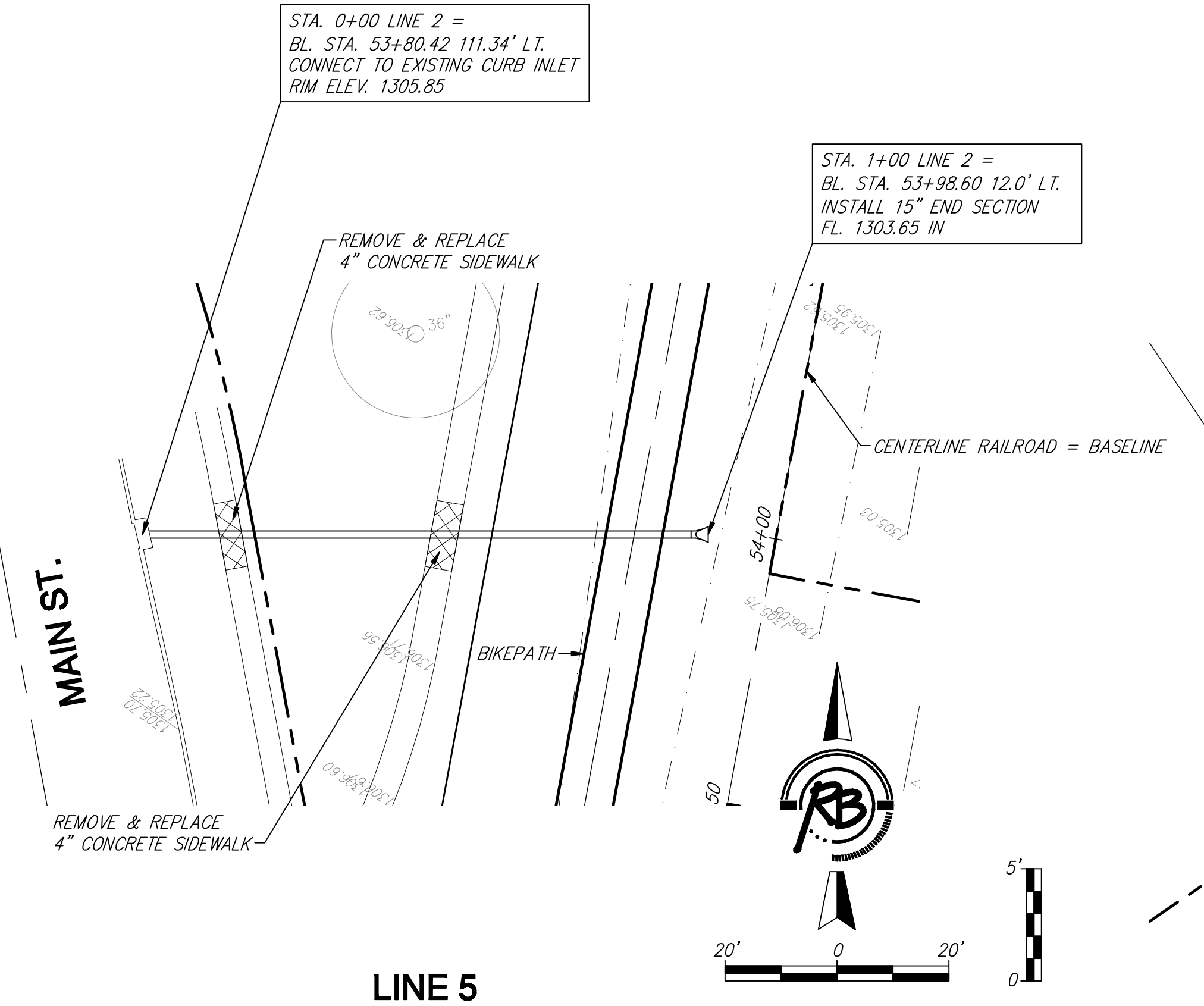
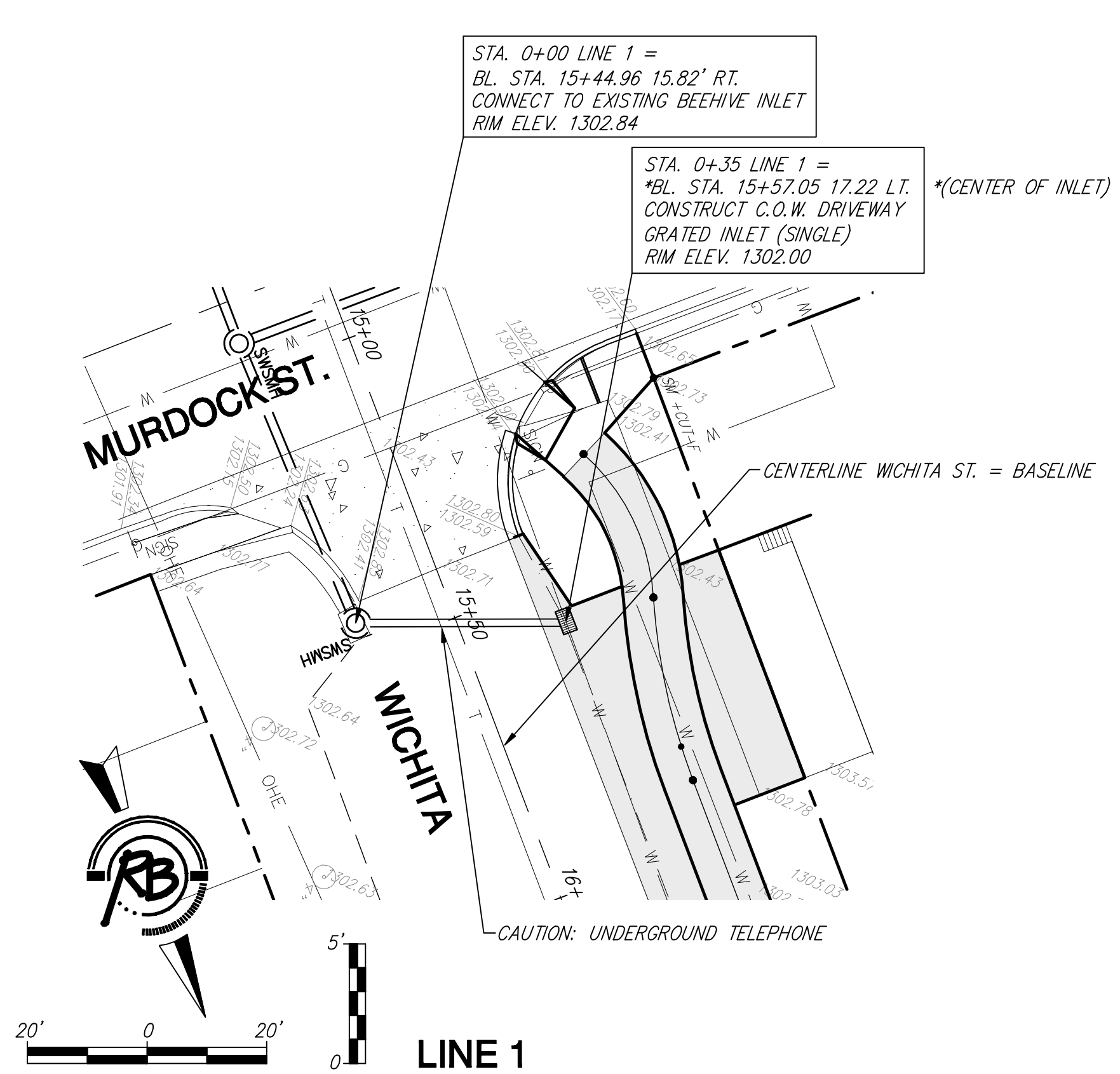


FHWA REGION NO.	STATE	PROJECT NUMBER	FISCAL YEAR	SHEET NUMBER	TOTAL SHEETS
	KANSAS	TE 0234 01		23	69



Ruggles & Bohm, P.A.
Engineering, Surveying, Land Planning

604 North Main
Wichita, Kansas 67208
www.rugglesandbohm.com

(913) 264-0000
(913) 264-4001 fax
E-mail: info@rugglesandbohm.com

PROJ. No. 472-84008
Engineering Base {SH 17}

DATE: May 16, 2008

DESIGNED BY: EUB
CHECKED BY: EUB
DRAWN BY: EUB