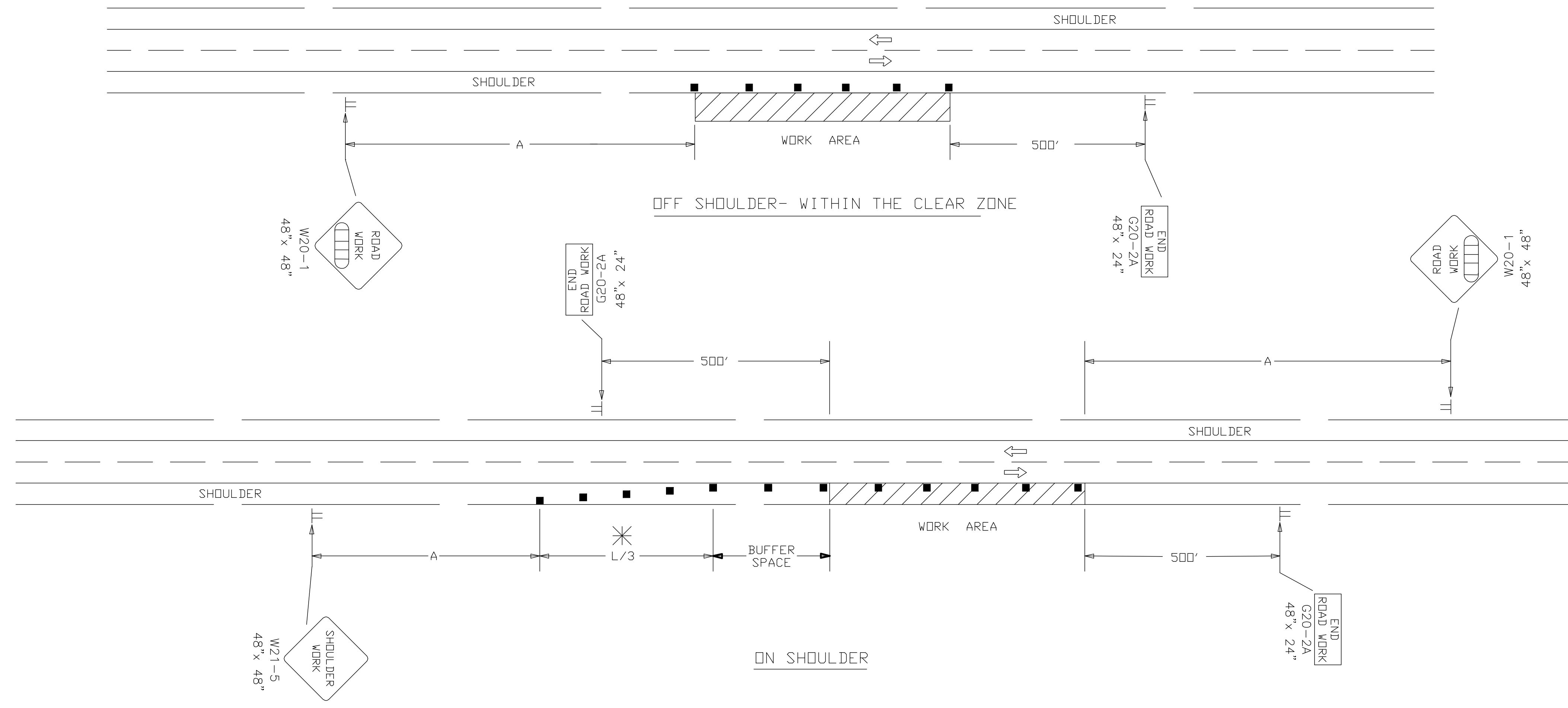


STATE	PROJECT NO.	YEAR	SHEET NO.	TOTAL SHEETS
KANSAS	472 84008		40	70

REFER TO STD. TE710 FOR ADDITIONAL INFORMATION ON TRAFFIC CONTROL SIGNS AND SIGN SPACING.
REFER TO STD. TE702 FOR INFORMATION ON TAPERS AND CHANNELIZING DEVICES.
REFER TO STD. TE700 FOR LENGTH OF BUFFER SPACE.

NOTE: NO TRAFFIC CONTROL IS REQUIRED IF THE WORK AREA IS LOCATED OUTSIDE OF THE CLEAR ZONE.

FOR OPERATIONS OF 60 MINUTES OR LESS, ALL SIGNS AND CHANNELIZING DEVICES MAY BE ELIMINATED IF A VEHICLE WITH AN ACTIVATED FLASHING OR REVOLVING YELLOW LIGHT IS USED.



WHEN CONCRETE SAFETY BARRIER IS USED, CHANNELIZING DEVICES ARE NOT NEEDED ALONG THE TANGENT BARRIER SECTION.

■ Channelizing Device
□ AHEAD, 1500 FT OR 1 MILE

* OMIT TAPER IF PAVED SHOULDER IS LESS THAN 8' WIDE.

3				
2	11-19-03	CHANGED BORDER	B. H.	S. A. B.
1	9-26-02	REMOVED G20-1 SIGNS	M. H.	S. A. B.
NO.	DATE	REVISIONS	BY	APP'D

KANSAS DEPARTMENT OF TRANSPORTATION
**TYPICAL TRAFFIC CONTROL
WORK ON OR NEAR THE SHOULDER
UNDIVIDED HIGHWAY (2 OR 4 LANE)**
TE720 9/1/00

FHWA APPROVAL	11-26-03	APP'D	Michael P. McKenna
DESIGNED	L. E. R.	DETAILED	
QUANTITIES		TRACED	B. A. H.
DETAIL CK.		QUAN. CK.	
		TRACE CK.	